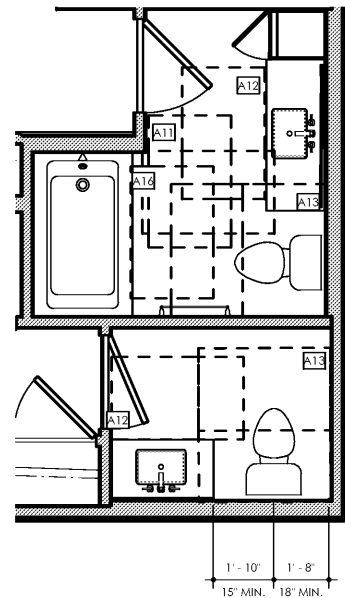
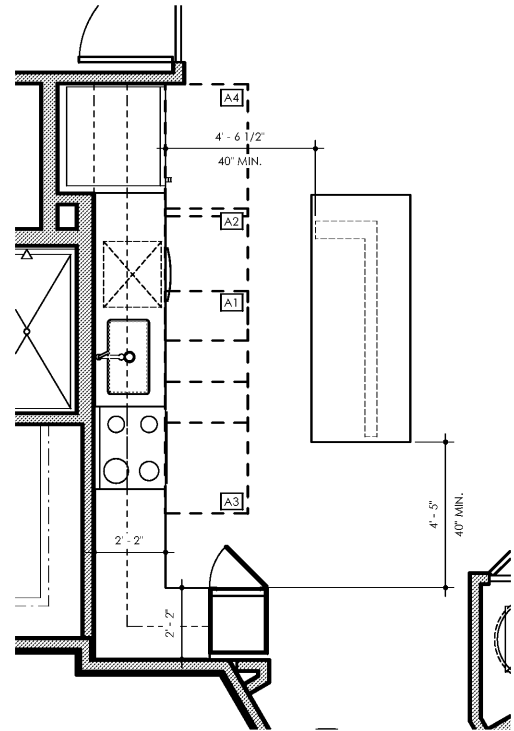


C:\A\CE&A\Custom\Plan\Projects\3789-1\8102\NORTON COMMONS\AS\8102_08.dwg 15/08/2019 15:28:00

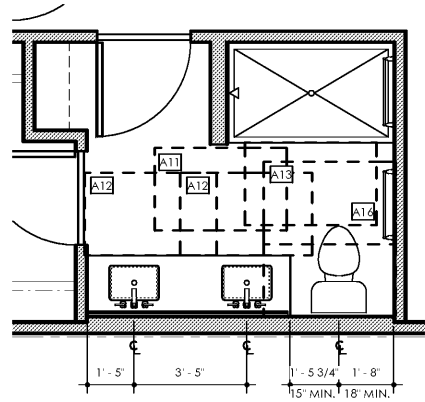
6/21/2019 10:17:01 AM



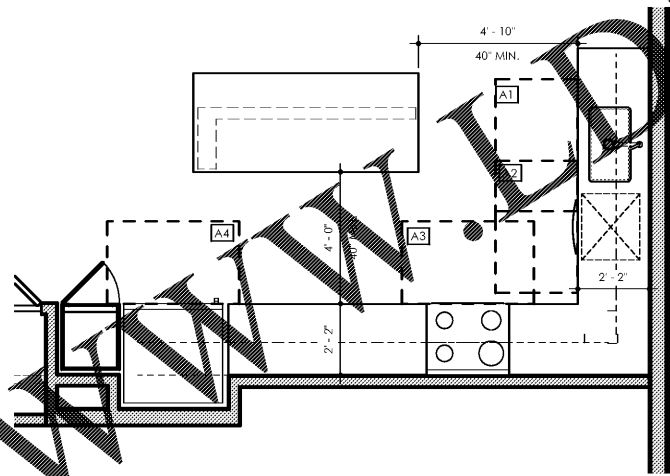
9 BATH UNIT C3 SCALE: 3/8" = 1'-0"



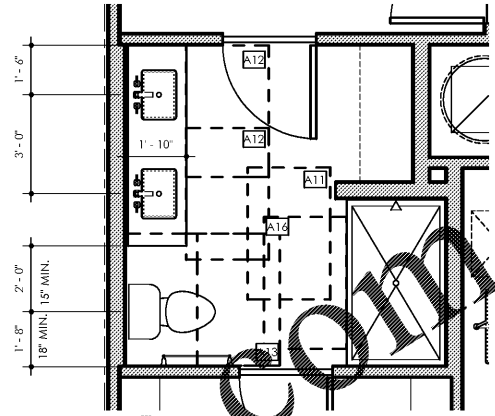
7 KITCHEN UNIT C3 SCALE: 3/8" = 1'-0"



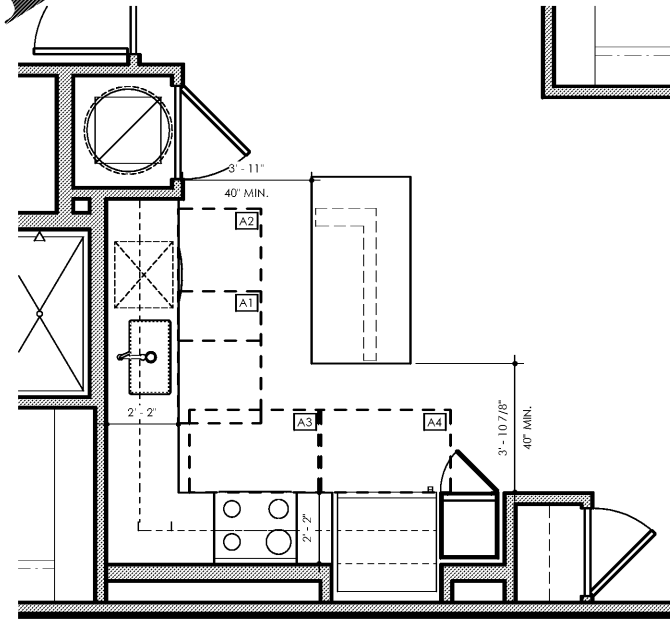
5 BATH UNIT C2 SCALE: 3/8" = 1'-0"



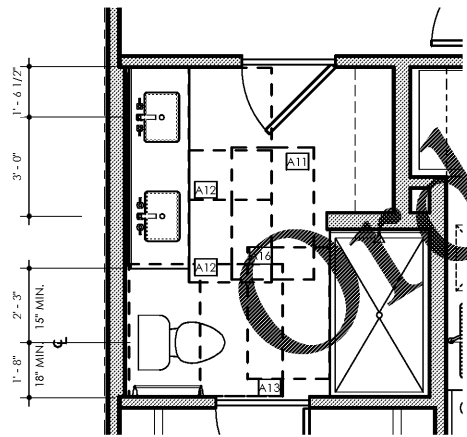
4 KITCHEN UNIT C2 SCALE: 3/8" = 1'-0"



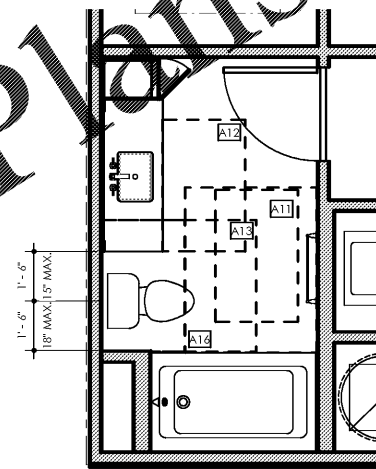
2 BATH UNIT C1 SCALE: 3/8" = 1'-0"



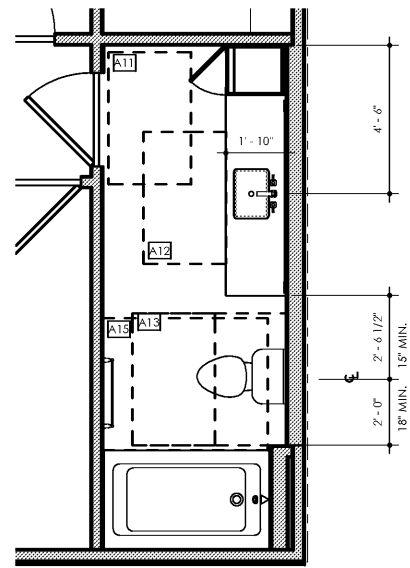
1 KITCHEN UNITS C1 SCALE: 3/8" = 1'-0"



8 BATH UNIT C3 SCALE: 3/8" = 1'-0"



6 BATH UNIT C2 SCALE: 3/8" = 1'-0"



3 BATH UNIT C1 SCALE: 3/8" = 1'-0"

UNIT ACCESSIBILITY KEY NOTES	
A1	KITCHEN SINK - 30"X48" CLEAR FLOOR SPACE CENTERED & POSITIONED FOR PARALLEL APPROACH PER FHA 1998 CHAPTER 7 PART A - 7.4
A2	DISHWASHER - 30"X48" CLEAR FLOOR SPACE POSITIONED FOR PARALLEL OR FORWARD APPROACH. DISHWASHER SHALL NOT OBSTRUCT CLEAR FLOOR SPACE PER FHA 1998 CHAPTER 7 PART A - 7.6
A3	COOKTOP/OVEN - 30"X48" CLEAR FLOOR SPACE POSITIONED FOR PARALLEL APPROACH PER FHA 1998 CHAPTER 7 PART A - 7.4
A4	REFRIGERATOR/FREEZER - 30"X48" CLEAR FLOOR SPACE POSITIONED FOR PARALLEL OR FORWARD APPROACH, CENTERED ON APPLIANCE PER FHA 1998 CHAPTER 7 PART A - 7.6
A5	LAVATORY - 30"X48" CLEAR FLOOR SPACE POSITIONED FOR SIDE APPROACH CENTERED ON LAVATORY PER FHA 1998 CHAPTER 7 PART B - 7.47
A6	WATER CLOSET (SIDE APPROACH) - PROVIDE 48"X56" CLEAR FLOOR SPACE PER FHA 1998 CHAPTER 7 PART B - 7.43
A7	WATER CLOSET (FRONT APPROACH) - PROVIDE 48"X66" CLEAR FLOOR SPACE PER FHA 1998 CHAPTER 7 PART B - 7.43
A8	BATH TUB - 60"X48" CLEAR FLOOR SPACE PROVIDED IN FRONT OF TUB PER FHA 1998 CHAPTER 7 PART B - 7.53
A9	30"X48" CLEAR FLOOR SPACE PROVIDED FOR SHOWER
A10	30"X48" CLEAR FLOOR SPACE PROVIDED FOR SHOWER
A11	30"X48" CLEAR FLOOR SPACE PROVIDED BEYOND ARC OF DOOR SWING PER FHA 1998 CHAPTER PART B - 7.39
A12	LAVATORY - 30"X48" CLEAR FLOOR SPACE POSITIONED FOR FRONT APPROACH CENTERED ON LAVATORY PER FHA 1998 CHAPTER 7 PART B - 7.47
A13	WATER CLOSET (SIDE APPROACH) - PROVIDE 48"X56" CLEAR FLOOR SPACE PER FHA 1998 CHAPTER 7 PART B - 7.43
A14	WATER CLOSET (FRONT APPROACH) - PROVIDE 48"X66" CLEAR FLOOR SPACE PER FHA 1998 CHAPTER 7 PART B - 7.43
A15	BATH TUB - 60"X48" CLEAR FLOOR SPACE PROVIDED IN FRONT OF TUB PER FHA 1998 CHAPTER 7 PART B - 7.53
A16	30"X48" CLEAR FLOOR SPACE PROVIDED FOR SHOWER
A17	30"X48" CLEAR FLOOR SPACE PROVIDED FOR SHOWER
A18	LAVATORY - 30"X48" CLEAR FLOOR SPACE POSITIONED FOR FRONT APPROACH CENTERED ON LAVATORY PER FHA 1998 CHAPTER 7 PART B - 7.47

Lytic at Norton Commons
Prospect, Kentucky

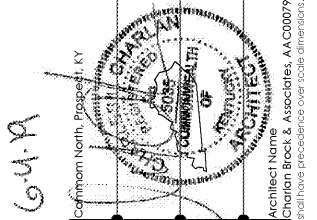
charlan • brock
associates

architects • planners
1770 fennell street
maitland florida 32751-7208
407.660.8900 f.407.875.9948
www.cbarchitects.com

UNIT
ACCESSIBILITY
REQUIREMENTS

date: 06/04/2019
job no: 3789.15
drawn by: EGR, JAC, TQT
reviewed by: CBA
issue history:
Δ Date

A4.84



Architect Name: Charlan Brock & Associates, A.A.000798
Charlan Brock & Associates shall have precedence over scale drawings.