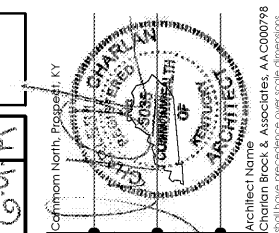


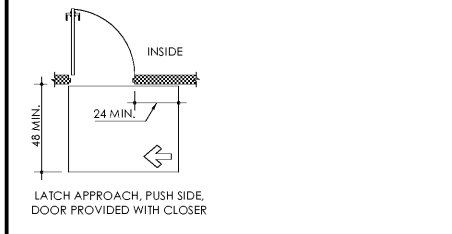
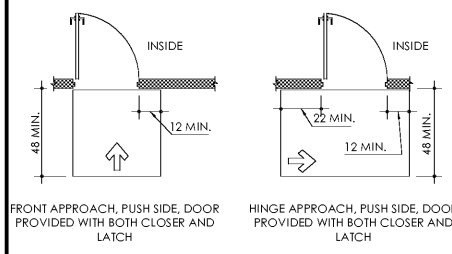
ACCESSIBILITY DESIGN CRITERIA PUBLIC SPACES: IBC 2015 ACCESSIBILITY CODE, ANSI A117.1 - 2003, ADAAG - 2010 AND FAIR HOUSING ACT DESIGN MANUAL - 1998



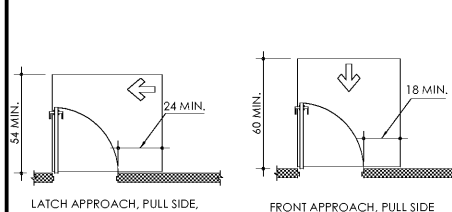
Architect Name
Charlan Brock & Associates, A.A. 000798
Charlan Brock & Associates, Inc. will file drawings if it has precedence over other drawings.

MANEUVERING CLEARANCE @ DOORS

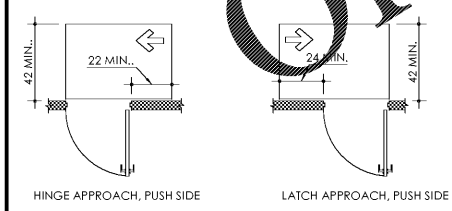
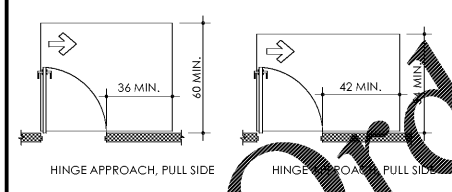
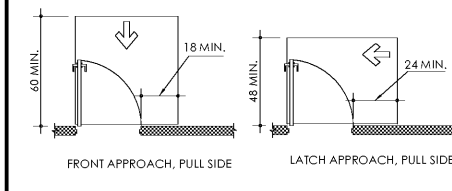
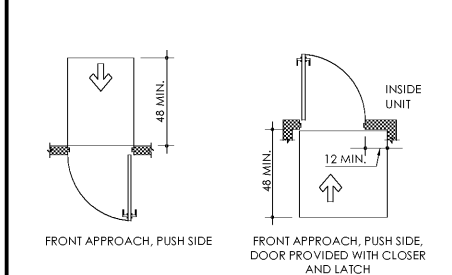
NOTE: MANEUVERING CLEARANCES AT DOORS ALSO APPLY TO PUBLIC AND COMMON USE GATES.



ENTRY DOOR REQUIREMENTS FOR PUBLIC DOORS WITH CLOSER - EXTERIOR SIDE

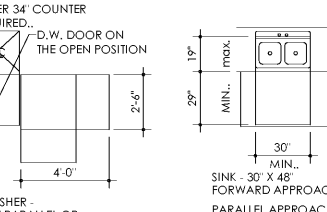
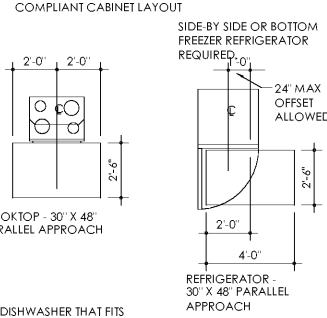
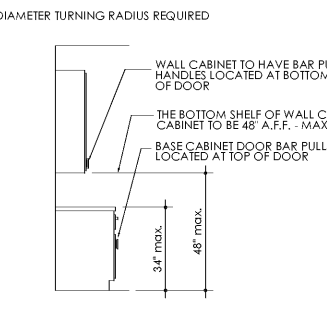
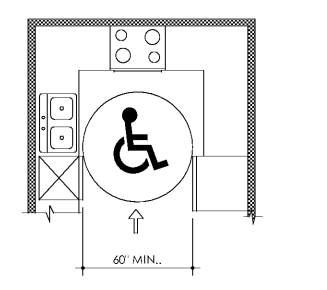


ENTRY DOOR REQUIREMENTS FOR PUBLIC DOORS WITH CLOSER - INTERIOR SIDE



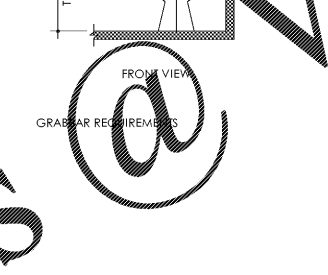
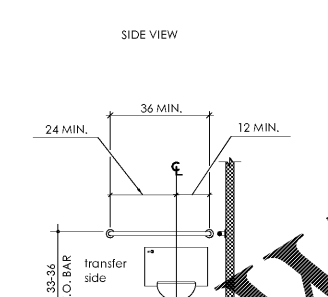
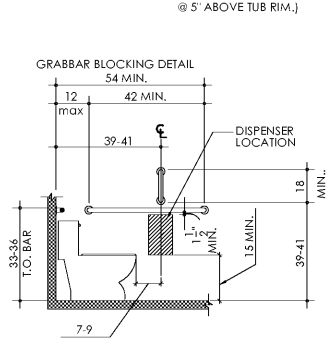
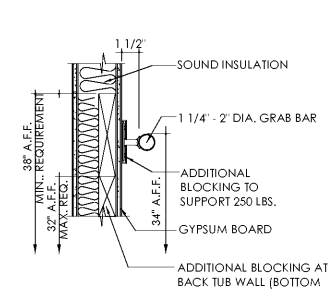
DOOR REQUIREMENTS FOR ALL OTHER PUBLIC DOORS

KITCHEN CLEARANCES

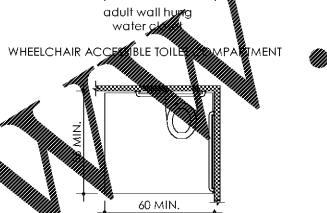
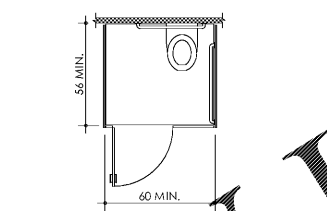
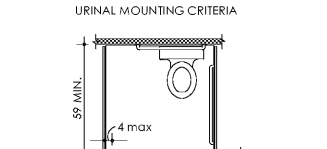
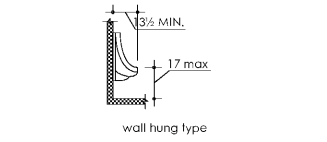


DISHWASHER - 30" X 48" PARALLEL OR PERPENDICULAR APPROACH REQUIRED CLEARANCE AT APPLIANCES

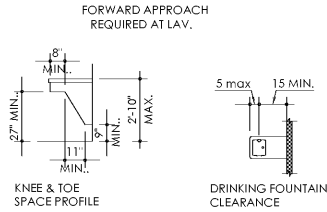
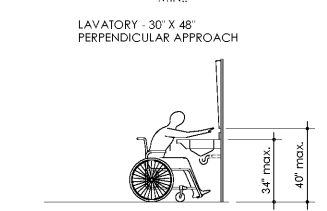
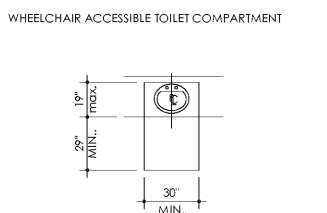
GRAB BAR ATTACHMENT



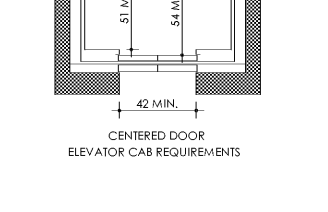
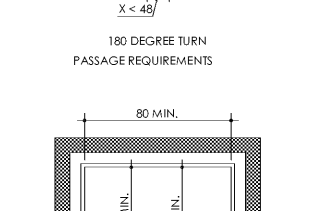
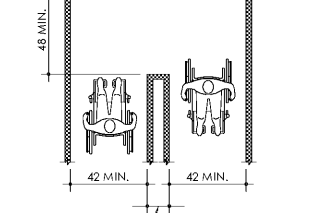
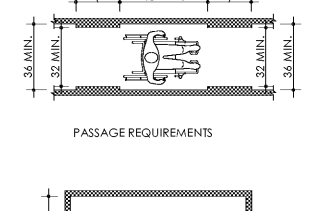
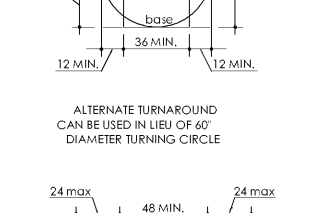
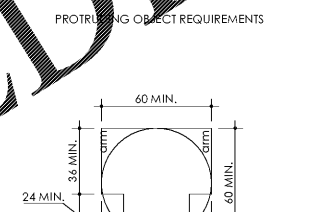
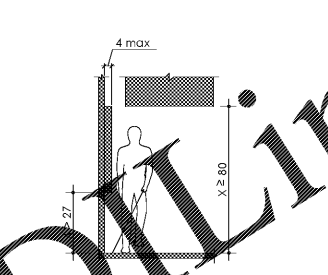
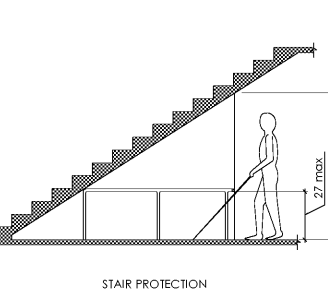
RESTROOM CLEARANCE



Lavatory and Water Closet 2017 Florida Accessibility Code Sect. 604.8.1.6



GENERAL CLEARANCES

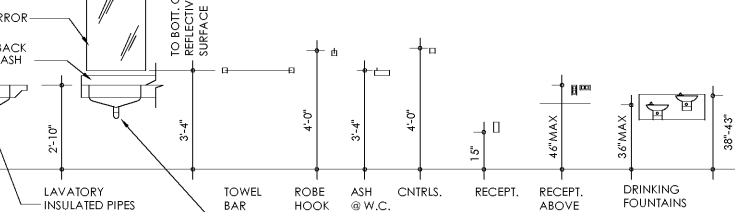
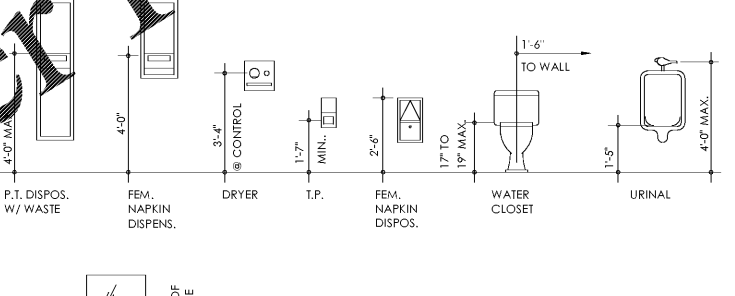


ACCESSIBILITY NOTES - PUBLIC SPACES

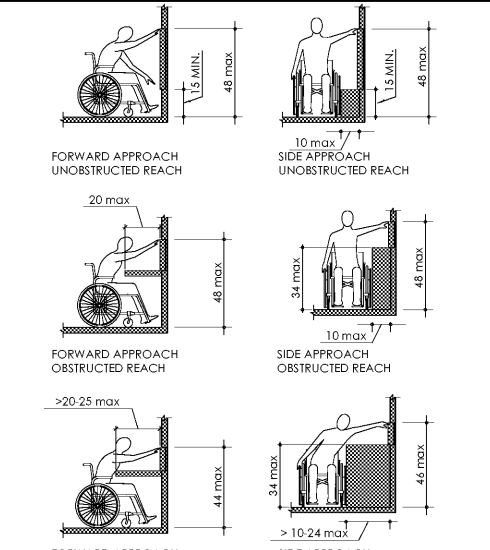
1. ALL PUBLIC SPACES IN THIS PROJECT ARE DESIGNED AND SHALL BE CONSTRUCTED IN ACCORDANCE WITH THE PROVISIONS OF THE INTERNATIONAL BUILDING CODE, 2015 EDITION, FAIR HOUSING ACT DESIGN MANUAL - 1998, ANSI A117.1 - 2003 AND ADA STANDARDS FOR ACCESSIBLE DESIGN - 2010.
2. DIAGRAMS AND DRAWINGS SHOWN ARE INCLUDED TO AID GENERAL CONTRACTOR IN PRICING AND CONSTRUCTION AND SHOULD NOT BE RELIED ON SOLELY. IT IS RECOMMENDED THAT GENERAL CONTRACTOR OBTAIN COPIES OF FLORIDA BUILDING CODE, ANSI A117.1 2003 AND FAIR HOUSING ACT DESIGN MANUAL 1998 AND THE 2010 ADA ACCESSIBILITY STANDARDS.
3. ALL NOTES CONTAINED IN THIS SECTION PERTAIN TO COMMON TENANT USE AREAS AND PUBLIC AREAS ONLY.
4. ALL ACCESSIBLE DOORWAYS SHALL HAVE A CLEAR OPENING OF 32" MIN. CLEAR OPENING OF SWINGING DOORS SHALL BE MEASURED BETWEEN THE FACE OF THE DOOR AND STOP, WITH THE DOOR OPENED 90 DEGREES.
5. PROVIDE REINFORCEMENT IN WALLS TO PERMIT THE INSTALLATION OF GRAB BARS AT TIME OF CONSTRUCTION, PER ANSI 1003.1.
6. LIGHTING CONTROLS, ELECTRICAL SWITCHES AND RECEPTACLES, ENVIRONMENTAL CONTROLS, APPLIANCE CONTROLS AND OPERATING HARDWARE FOR OPERABLE WINDOWS, PULLING FIXTURE CONTROLS AND USER CONTROLS FOR SECURITY OR INTERCOM SYSTEMS SHALL COMPLY WITH THE REACH REQUIREMENTS SHOWN ON THIS SHEET. OPERABLE PARTS SHALL BE OPERABLE WITH ONE HAND AND SHALL NOT REQUIRE GRASPING, FINGERING, OR TWISTING OF THE WRIST. THE FORCE REQUIRED TO ACTIVATE OPERABLE PARTS SHALL BE 5.0 POUNDS MAX.
7. KITCHENS AND KITCHENETTES: PROVIDE CLEARANCE BETWEEN ALL OPPOSING BASE CABINETS, COUNTER TOPS, APPLIANCES, OR WALLS WITHIN KITCHEN WORK AREAS SHALL BE 40" MIN.
- SINK: PROVIDE 30" X 48" CLEAR FLOOR SPACE FOR FORWARD APPROACH AND CENTERED ON SINK BOWL. A PARALLEL APPROACH SHALL BE PERMITTED IN A SPACE WHERE A COOKTOP OR RANGE IS NOT PROVIDED, AND TO WET BARS. PROVIDE A CLEAR FLOOR SPACE POSITIONED ADJACENT TO THE DISHWASHER DOOR. THE DISHWASHER DOOR IN THE OPEN POSITION SHALL NOT OBSTRUCT THE CLEAR FLOOR SPACE FOR THE DISHWASHER OR AN ADJACENT SINK.
- DW: COMBINATION REFRIGERATORS AND FREEZERS SHALL HAVE AT LEAST 50 PERCENT OF THE FREEZER 54" MAX. ABOVE THE FLOOR WHEN THE SHELVES ARE INSTALLED AT THE MAX. HEIGHTS POSSIBLE IN THE COMPARTMENT. A CLEAR FLOOR SPACE POSITIONED FOR A PARALLEL APPROACH TO THE SPACE DEDICATED TO A REF/FREEZER SHALL BE PROVIDED. THE CENTERLINE OF THE CLEAR FLOOR SPACE SHALL BE OFFSET 24" MAX. FROM THE CENTERLINE OF THE DEDICATED SPACE.
- STORAGE: AT LEAST 50% OF SHELF SPACE IN CABINETS SHALL COMPLY WITH ANSI 2003, SECT. 905.
8. BATHROOMS: LAV: PROVIDE A 30" X 48" CLEAR FLOOR SPACE POSITIONED FOR FORWARD APPROACH. WC: THE SIZE AND ARRANGEMENT OF THE STANDARD TOILET STALL SHALL COMPLY WITH FIGURES ON THIS SHEET.
9. MAX. CARPET PILE HEIGHT SHALL BE 1/2"
10. GRAB BARS SHALL HAVE AN OUTSIDE DIAMETER OF 1 1/4" MIN. AND 2" MAX. THE SPACE BETWEEN THE WALL AND THE GRAB BAR SHALL BE 1 1/2". STRUCTURAL STRENGTH OF THE GRAB BAR SHALL NOT SUPPORT LESS THAN 250 POUNDS.
11. AUDIBLE EMERGENCY ALARMS SHALL PRODUCE A SOUND THAT EXCEEDS THE PREVAILING EQUIVALENT SOUND LEVEL IN THE ROOM OR SPACE BY AT LEAST 15 DB OR EXCEEDS ANY MAXIMUM SOUND LEVEL WITH A DURATION OF 30 SECONDS BY 5 DB, WHICHEVER IS LOUDER. SOUND LEVELS FOR ALARM SIGNALS SHALL NOT EXCEED 120 DB.
12. VISUAL ALARMS SHALL BE FLASHING LIGHTS ARRANGED TO FLASH IN CONJUNCTION WITH THE AUDIBLE EMERGENCY ALARMS. THE FLASHING FREQUENCY OF VISUAL ALARMS SHALL BE APPROX. 1 Hz. SPECIALIZED SYSTEMS USING ADVANCED TECHNOLOGY MAY BE SUBSTITUTED IF EQUIVALENT PROTECTION IS AFFORDED HANDICAPPED USERS OF THE BUILDING OR FACILITY.
13. SENSORY ALARMS PROVIDED FOR PERSONS WITH HEARING IMPAIRMENTS SHALL BE CONNECTED TO THE BUILDING EMERGENCY SYSTEM OR THERE SHALL BE A STANDARD 110 VOLT ELECTRICAL RECEPTACLE INTO WHICH AN ALARM UNIT CAN BE CONNECTED TO BE ACTIVATED BY THE BUILDING ALARM SYSTEM. INSTRUCTIONS FOR USE OF THE AUXILIARY ALARM OR CONNECTIONS SHALL BE PROVIDED.
14. DIMENSIONS SHOWING CLEARANCE REQUIREMENTS SHALL BE TAKEN FROM THE FACE OF THE FINISH MATERIAL.
15. CLEAR WIDTH AT KITCHENS TO BE MEASURED FROM THE FURTHEST PROJECTING ELEMENT SUCH AS THE FACE OF THE COUNTERTOP EDGE, FACE OF APPLIANCE OR FACE OF TRIM.

MOUNTING HEIGHTS

ALL VERTICAL DIMENSIONS ARE ABOVE FINISHED FLOOR (A.F.F.)



REACH REQUIREMENTS



Lytic at Norton Commons
 Prospect, Kentucky
 Bristol Development Group
 981 Mallory Station Rd, Suite 204
 Franklin, TN 37067

charlan • brock associates
 architects • planners
 1770 fennell street
 maitland florida 32751-7208
 407.660.8900 f:407.875.9948
 www.cbaarchitects.com

ACCESSIBILITY REQUIREMENTS PUBLIC SPACES

date: 06/04/2019
 job no: 3789.15
 drawn by: EGR, JAC, TQT
 reviewed by: CBA
 issue history:
 Δ Date

A4.73

6/8/2019 11:42 AM C:\Clients\Custom\Project\3789.15\KITCHEN\0414.DWG\ASBANS_12.dwg, asb: 1528@charlanbrock.com

Order Plans

WWW.LDILLING.COM