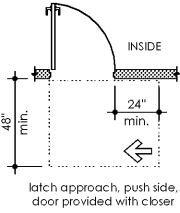
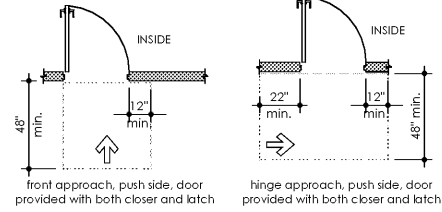


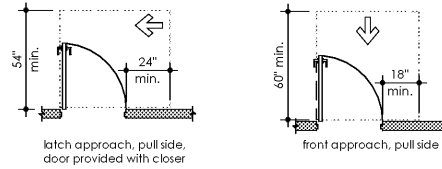
ACCESSIBILITY DESIGN CRITERIA FOR ANSI TYPE 'A' TENANT PRIVATE USE SPACES: 2015 IBC AND ANSI A117.1-2009 GUIDELINES

MANEUVERING CLEARANCE @ DOORS

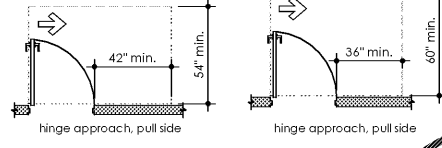
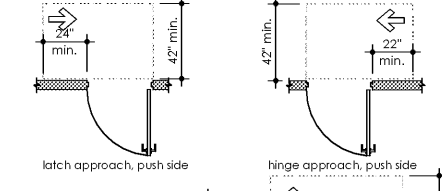
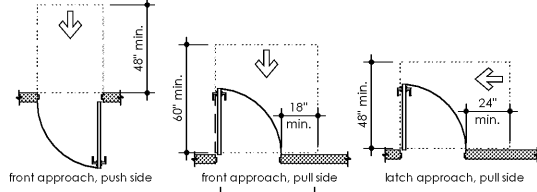
PROVIDE MANEUVERING CLEARANCES AT DOORS ENTERING AND WITHIN UNIT



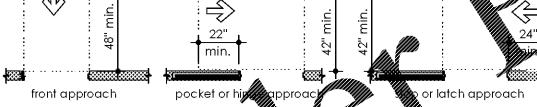
ENTRY DOOR REQUIREMENTS FOR TYPE 'A' UNITS
CLEARANCE REQUIRED AT CORRIDOR SIDE OF DOOR



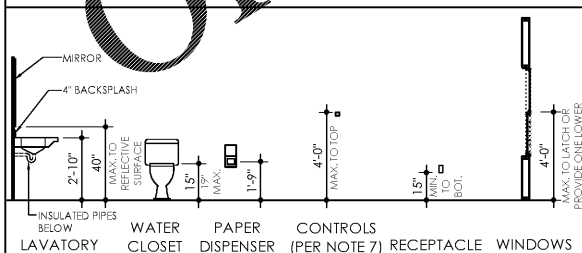
ENTRY DOOR REQUIREMENTS FOR TYPE 'A' UNITS
CLEARANCE REQUIRED AT UNIT SIDE OF DOOR



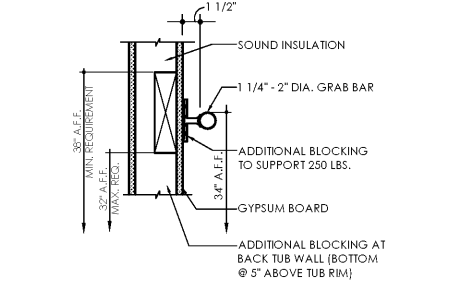
DOOR REQUIREMENTS FOR TYPE 'A' UNITS
CLEARANCE REQUIRED AT LATCH OR HINGE ON THE UNIT



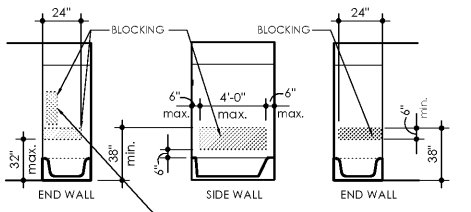
MOUNTING HEIGHTS



GRAB BAR ATTACHMENT

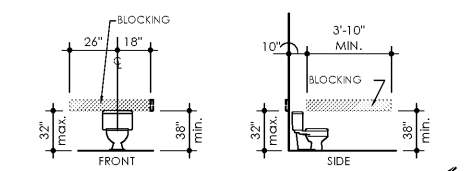


GRABBAR BLOCKING DETAIL

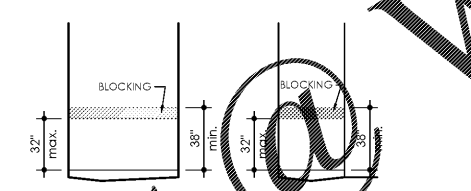


VERTICAL GRAB BAR 18" MINIMUM IN LENGTH SHALL BE PROVIDED ON THE CONTROL END WALL 3" MINIMUM AND 6" MAXIMUM ABOVE THE HORIZONTAL GRAB BAR AND 4" MAXIMUM INWARD FROM THE FRONT EDGE OF THE BATHTUB PER ANSI 117.1-2009 SECTION 1003.11.2.5 AND 607.4.1.2.2

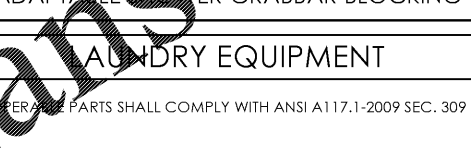
BATHTUB GRABBAR BLOCKING



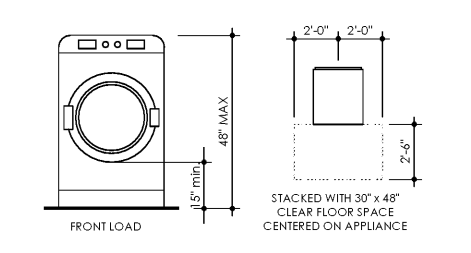
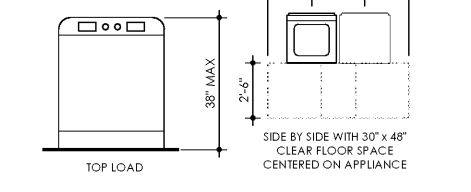
WATER CLOSET GRABBAR BLOCKING



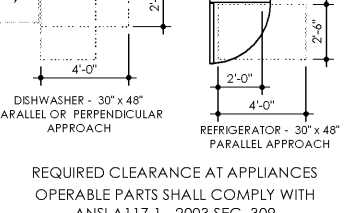
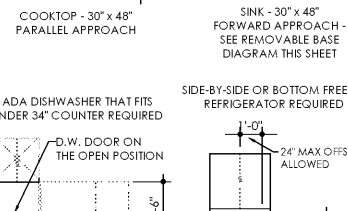
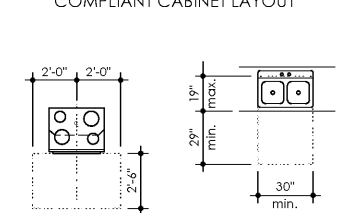
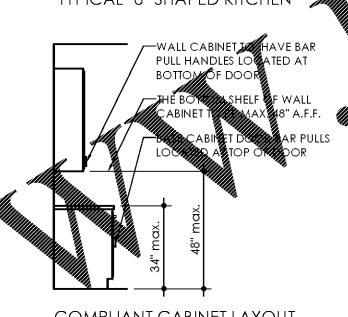
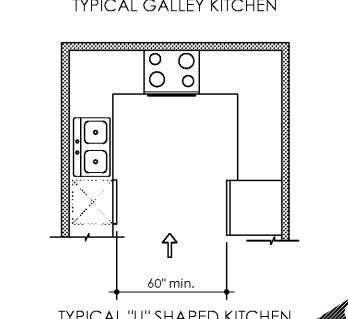
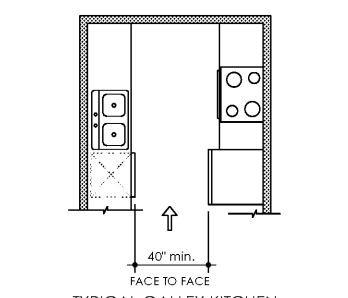
ADAPTABLE SHOWER GRABBAR BLOCKING



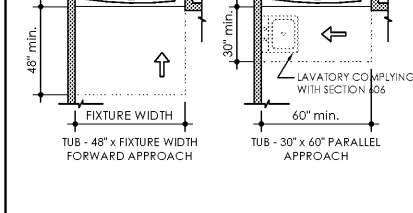
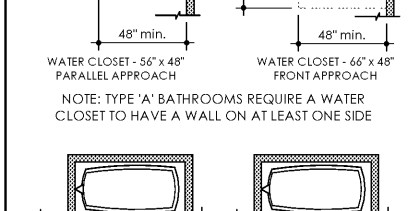
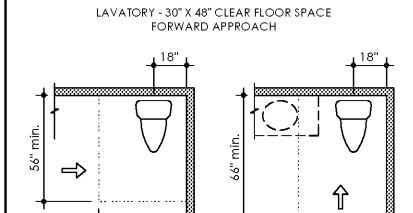
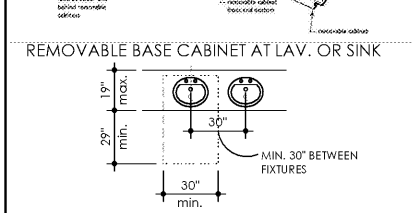
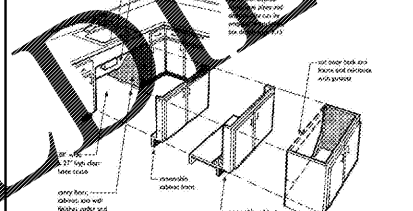
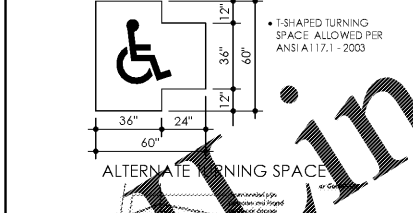
LAUNDRY EQUIPMENT



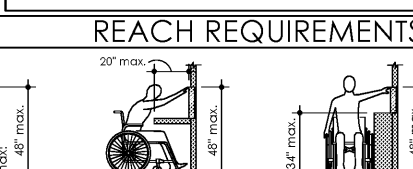
KITCHEN CLEARANCES



BATHROOM CLEARANCES

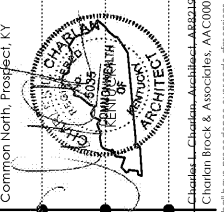


REACH REQUIREMENTS

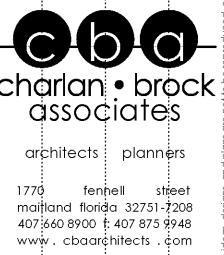


ACCESSIBILITY NOTES - UNITS

- ALL ACCESSIBLE UNITS IN THIS PROJECT ARE DESIGNED AND SHALL BE CONSTRUCTED IN ACCORDANCE WITH THE PROVISIONS OF THE 2015 IBC AND ANSI A117.1-2009. REFER TO SHEET A4.71 FOR TYPE 'B' UNIT DESIGN CRITERIA.
- 2% OF THE TOTAL UNITS ARE DESIGNATED AS AND SHALL BE CONSTRUCTED AS TYPE 'A' UNITS.
- DIAGRAMS AND DRAWINGS SHOWN ARE INCLUDED TO AID GENERAL CONTRACTOR IN PRICING AND CONSTRUCTION AND SHOULD NOT BE RELIED ON SOLELY. IT IS RECOMMENDED THAT GENERAL CONTRACTOR OBTAIN COPIES OF THE 2006 AFPC AND ANSI A117.1-2009.
- ALL DOORS AND DOORWAYS SHALL COMPLY WITH CHAPTER 11 OF THE 2006 AFPC AND ANSI A117.1-2009.
- USER PASSAGE DOORWAYS SHALL HAVE A MINIMUM CLEAR OPENING OF 32" MIN. CLEAR OPENING OF SWINGING DOORS SHALL BE MEASURED BETWEEN THE FACE OF THE DOOR AND STOP IN THE DOOR OPEN TO DEGREES.
- PROVIDE REINFORCEMENT WALLS TO PERMIT THE INSTALLATION OF GRAB BARS IN TYPE 'A' UNITS. GRAB BARS WHEN REQUIRED TO BE INSTALLED, SHALL HAVE AN OUTSIDE DIAMETER OF 1 1/4" MIN. AND 2" MAX. THE SPACE BETWEEN THE WALL AND THE GRAB BAR SHALL BE 1 1/2". STRUCTURAL STRENGTH SHALL NOT SUPPORT LESS THAN 250 POUNDS.
- LIGHTING CONTROLS, ELECTRICAL SWITCHES AND RECEPTACLES, ENVIRONMENTAL CONTROLS, APPLIANCE CONTROLS, OPERATING HARDWARE FOR OPERABLE UNITS, PLUMBING FIXTURE CONTROLS AND USER CONTROLS FOR SECURITY OR INTERCOM SYSTEM SHALL COMPLY WITH THE REACH REQUIREMENTS SHOWN ON THIS SHEET. OPERABLE PARTS SHALL BE OPERABLE WITH ONE HAND AND SHALL NOT REQUIRE TIGHT GRASPING, PINCHING, OR TWISTING OF THE WRIST. THE FORCE REQUIRED TO ACTIVATE OPERABLE PARTS SHALL NOT EXCEED 5 POUNDS.
- WASHING MACHINE AND CLOTHES DRYER SHALL HAVE A CLEAR FLOOR SPACE POSITIONED FOR PARALLEL APPROACH AND CENTERED ON APPLIANCE. TOP LOADING MACHINES SHALL HAVE THE DOOR TO THE LAUNDRY COMPARTMENT 36" MAX. ABOVE THE FLOOR. FRONT LOADING MACHINES SHALL HAVE THE BOTTOM OF THE OPENING TO THE LAUNDRY COMPARTMENT 15" MIN. AND 34" MAX. ABOVE THE FLOOR.
- KITCHENS:
 - CLEARANCE BETWEEN ALL OPPOSING BASE CABINETS, COUNTERTOPS, APPLIANCES, OR WALLS WITHIN KITCHEN WORK AREA SHALL BE 40" MIN. PROVIDE AT LEAST ONE WORK SURFACE WITH A MIN. 30" CLEAR LENGTH.
 - SINK: PROVIDE CLEAR SPACE FOR FORWARD APPROACH AND CENTERED ON SINK BOWL. CABINETRY SHALL BE PERMITTED TO BE ADDED UNDER THE SINK, PROVIDED (a) THE CABINETRY CAN BE REMOVED WITHOUT REMOVAL OF SINK, (b) THE FLOOR FINISH EXTENDS UNDER SUCH CABINETRY, AND (c) THE WALLS BEHIND AND SURROUNDING CABINETRY ARE FINISHED.
 - RANGE: SHALL HAVE CONTROLS ON FRONT PANELS.
 - D/W: PROVIDE A CLEAR FLOOR SPACE, POSITIONED ADJACENT TO THE DISHWASHER DOOR. THE DISHWASHER DOOR IN THE OPEN POSITION SHALL NOT OBSTRUCT THE CLEAR FLOOR SPACE FOR THE DISHWASHER OR AN ADJACENT SINK.
 - COMBINATION REFRIGERATORS AND FREEZERS SHALL HAVE AT LEAST 50 PERCENT OF THE FREEZER COMPARTMENT SHELVES, INCLUDING THE BOTTOM OF THE FREEZER 54" MAX. ABOVE THE FLOOR WHEN THE SHELVES ARE INSTALLED AT THE MAX. HEIGHTS POSSIBLE IN THE COMPARTMENT. A CLEAR FLOOR SPACE POSITIONED FOR A PARALLEL APPROACH TO THE SPACE DEDICATED TO A REF/FREEZER, SHALL BE PROVIDED. THE CENTERLINE OF THE CLEAR FLOOR SPACE SHALL BE OFFSET 24" MAX. FROM THE CENTERLINE OF THE DEDICATED SPACE.
- BATHROOMS:
 - PROVIDE A 60" TURNING SPACE IN TYPE 'A' BATHROOMS.
 - LAV: PROVIDE A 30" x 48" CLEAR FLOOR SPACE POSITIONED FOR FORWARD APPROACH. CABINETRY SHALL BE PERMITTED TO BE ADDED UNDER THE SINK, PROVIDED (a) THE CABINETRY CAN BE REMOVED WITHOUT REMOVAL OF SINK, (b) THE FLOOR FINISH EXTENDS UNDER SUCH CABINETRY, AND (c) THE WALLS BEHIND AND SURROUNDING CABINETRY ARE FINISHED.
 - MAX. 34" HEIGHT TO RIM OR COUNTER, WHICHEVER IS HIGHER. PROVIDE REQUIRED KNEE SPACE.
 - W/C: THE WATER CLOSET SHALL BE POSITIONED WITH A WALL TO THE REAR AND TO ONE SIDE. THE CENTERLINE OF THE WATER CLOSET SHALL BE 16" MIN. AND 18" MAX. FROM THE SIDEWALL. CLEARANCE AROUND THE WATER CLOSET OF 60" MIN. MEASURED PERPENDICULAR FROM THE SIDE WALL, AND 56" MIN. MEASURED PERPENDICULAR FROM THE REAR WALL SHALL BE PROVIDED. A LAVATORY SHALL BE PERMITTED ON THE REAR WALL 18" MIN. FROM THE CENTERLINE OF THE WATER CLOSET WHERE THE CLEARANCE AT THE WATER CLOSET IS 66" MIN. MEASURED PERPENDICULAR FROM THE REAR WALL.
 - TUB: PROVIDE A CLEARANCE EXTENDING THE LENGTH OF THE TUB AND 30" MINIMUM IN DEPTH.
 - THE SHOWER SPRAY UNIT SHALL BE PROVIDED WITH A HOSE 59" MIN. LONG THAT CAN BE USED AS A FIXED SHOWER HEAD OR AS A HAND HELD SHOWER. IF AN ADJUSTABLE-HEIGHT SHOWER HEAD MOUNTED ON A VERTICAL BAR IS USED, THE BAR SHALL BE INSTALLED SO AS NOT TO OBSTRUCT THE USE OF GRAB BARS.
- MAXIMUM CARPET PILE HEIGHT SHALL BE 1/2".
- AUDIBLE EMERGENCY ALARMS SHALL PRODUCE A SOUND THAT EXCEEDS THE PREVAILING EQUIVALENT SOUND LEVEL IN THE ROOM OR SPACE BY AT LEAST 15 dB OR EXCEEDS ANY MAXIMUM SOUND LEVEL WITH A DURATION OF 30 SECONDS BY 5 dB, WHICHEVER IS LOUDER. SOUND LEVELS FOR ALARM SIGNALS SHALL NOT EXCEED 120 dB.
- VISUAL ALARMS SHALL BE FLASHING LIGHTS ARRANGED TO FLASH IN CONJUNCTION WITH THE AUDIBLE EMERGENCY ALARMS. THE FLASHING FREQUENCY OF VISUAL ALARMS SHALL BE APPROXIMATELY 1 Hz. SPECIALIZED SYSTEMS USING ADVANCED TECHNOLOGY MAY BE SUBSTITUTED IF EQUIVALENT PROTECTION IS AFFORDED HANDICAPPED USERS OF THE BUILDING OR FACILITY.
- SENSORY ALARMS PROVIDED FOR PERSONS WITH HEARING IMPAIRMENTS SHALL BE CONNECTED TO THE BUILDING EMERGENCY SYSTEM OR THERE SHALL BE A STANDARD 110 VOLT ELECTRICAL RECEPTACLE INTO WHICH AN ALARM UNIT CAN BE CONNECTED TO BE ACTIVATED BY THE BUILDING ALARM SYSTEM. INSTRUCTIONS FOR USE OF THE AUXILIARY ALARM OR CONNECTIONS SHALL BE PROVIDED.



Common North, Prospect, KY
604.911.3707
Lyric at Norton Commons
Prospect, Kentucky
Bristol Development Group
381 Malory Station Rd, Suite 204
Franklin, TN 37067



ACCESSIBILITY
REQUIREMENTS
TYPE 'A' UNITS
date: 06-04-2019
job no: 3789.15
drawn by: JHB
reviewed by: CBA
file: 3789-A4.72
issue history: