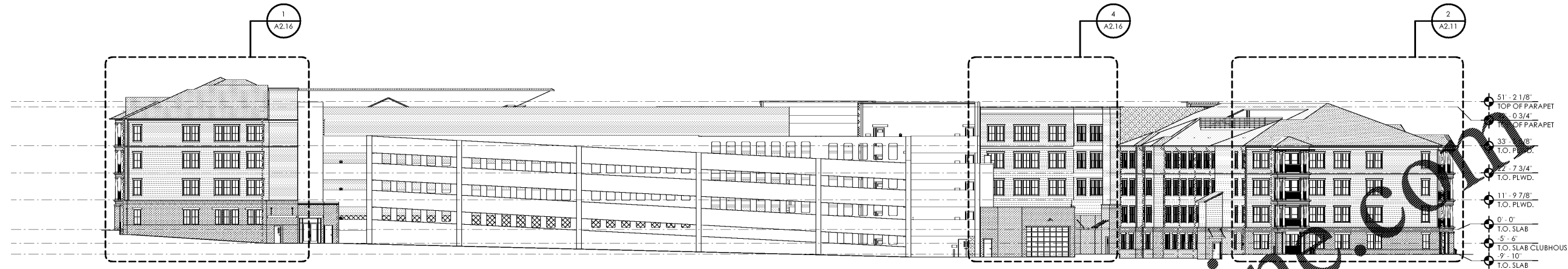


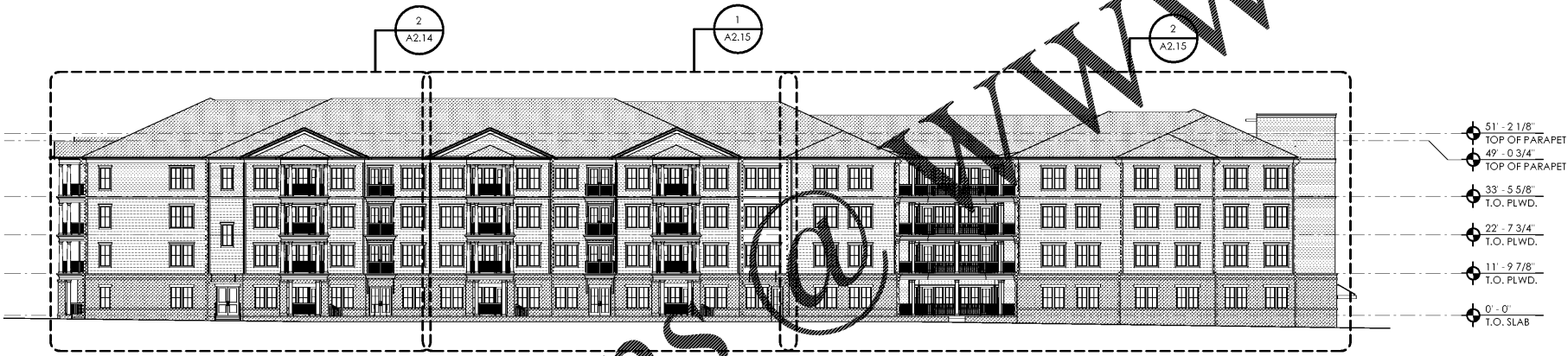
6-4-19  
Common North, Prospect, KY

Architect Name  
Charlan Brock & Associates, A.A. 000798  
Charlan Brock & Associates, A.A. 000798  
Charlan Brock & Associates, A.A. 000798



② NORTH ELEVATION

SCALE: 3/64" = 1'-0"



① EAST ELEVATION

SCALE: 3/64" = 1'-0"

TYPICAL ELEVATION NOTES	
1.	TYPICAL EXTERIOR CLADDING - COMBINATION OF CEMENTITIOUS LAPPED SIDING, CEMENTITIOUS PANEL SIDING AND CULTURED STONE VENEER. ENTIRE BUILDING TO BE WRAPPED WITH BUILDING WRAP, INSIDE AND OUTSIDE CORNERS TO BE PRE-WRAPPED WITH SELF-ADHERED MEMBRANE SPANNING 6" FROM EACH SIDE OF CORNER. STONE VENEER TO BE INSTALLED OVER STUCCO BASE WITH METAL LATH, DRAINAGE MAT, AND #30 FELT OVER BUILDING WRAP.
2.	ALL EXTERIOR TRIM TO BE 5/4" FIBER CEMENT TRIM
3.	ALL PENETRATIONS MUST BE PROPERLY FLASHED AND/OR SEALED. ATTACHMENTS THROUGH EXTERIOR SKIN SHALL BE SET IN BED OF SEALANT.
4.	ALL BUILDING MOUNTED EQUIPMENT, PANELS, ETC. SHALL BE MOUNTED AFTER EXTERIOR FINISH IS APPLIED AND PAINTED. IF SEQUENCING OF CONSTRUCTION REQUIRES MOUNTING PRIOR TO THIS, CONTRACTOR SHALL SUBMIT METHOD OF MOUNTING AND WATERPROOFING TO ARCHITECT FOR APPROVAL
5.	ALL UNIT BALCONIES TO HAVE STRUCTURAL FLOOR SYSTEM SLOPED AWAY FROM UNIT FOR DRAINAGE.
6.	ALL EXTERIOR BALCONY RAILS TO BE ANODIZED ALUMINUM.
7.	ALL FINISH GRADE SHALL BE MINIMUM 8" BELOW FINISH FLOOR AND SLOPE AWAY FROM BUILDING.
8.	PROVIDE URETHANE SEALANT AT ALL INSIDE CORNERS AND WINDOW/DOOR PERIMETERS.
9.	PROVIDE URETHANE SEALANT WITH BOND BREAKER (TO PREVENT 3-SIDED ADHESION) AT TOP AND BOTTOM OF HORIZONTAL BUILDING BANDS.
10.	PROVIDE SEALANT JOINTS AT INTERFACE BETWEEN DISSIMILAR SUBSTRATES, SUCH AS BALCONY CEILINGS, BALCONY EXTERIOR EDGES, EXTERIOR WALL TO SOFFIT AND CEILING CONDITIONS.
11.	PROVIDE METAL FLASHING AT ALL HORIZONTAL TRANSITIONS BETWEEN MATERIALS.
12.	SLOPE METAL FLASHING TO SHED WATER. LAP AND SEAL OVERLAPS IN FLASHING.
13.	PROVIDE SEALANT END DAMS AT END OF ALL HORIZONTAL FLASHING TO PREVENT WATER RUNOFF.
14.	PROVIDE POSITIVE SLOPE 1:2 AT TOP OF TRIM BANDS, TYPICAL.
15.	EXTERIOR WALLS TO BE PAINTED PRIOR TO INSTALLATION OF DOWNSPOUTS. ALL DOWNSPOUTS TO BE 3'X5" ANODIZED ALUMINUM.
16.	COLORS OF ALL EXTERIOR VENTS, DEVICES, ELECTRICAL EQUIPMENT, ETC. TO BE SELECTED TO MATCH SURROUNDING BUILDING PAINT COLOR.
17.	ALL DRYER VENTS TO ALIGN HORIZONTALLY AND VERTICALLY.

TYPICAL BRICK NOTES	
VERTICAL EXPANSION JOINTS IN BRICK VENEER:	
1.	FOR BRICKWORK WITHOUT OPENINGS, SPACE NO MORE THAN 25' O.C.
2.	FOR BRICKWORK WITH MULTIPLE OPENINGS, CONSIDER SYMMETRICAL PLACEMENT OF EXPANSION JOINTS AND REDUCED SPACING OF NO MORE THAN 20' O.C.
3.	PLACE AS FOLLOWS:
a)	AT OR NEAR CORNERS
b)	AT OFFSETS AND SETBACKS
c)	AT WALL INTERSECTIONS
d)	AT CHANGES IN WALL HEIGHT
e)	WHERE SUPPORT OF BRICK VENEER CHANGES
HORIZONTAL EXPANSION JOINTS IN BRICK VENEER:	
1.	LOCATE IMMEDIATELY BELOW SHELF ANGLES
2.	PROVIDE MINIMUM 1/4" SPACE OR COMPRESSIBLE MATERIAL RECOMMENDED BELOW SHELF ANGLE
3.	FOR BRICK INFILL, PLACE BETWEEN TOP OF BRICKWORK AND STRUCTURAL FRAME
BRICKWORK WITHOUT SHELF ANGLES:	
ACCOMMODATE BRICKWORK MOVEMENT BY:	
a)	PLACING EXP. JOINTS AROUND ELEMENTS THAT ARE RIGIDLY ATTACHED TO THE FRAME AND PROJECT INTO THE VENEER, SUCH AS WINDOWS AND DOOR FRAMES
b)	INSTALL METAL CAPS OR COPING THAT ALLOW INDEPENDENT VERTICAL MOVEMENT OF WYTHES
c)	INSTALLING JAMB RECEPTORS THAT ALLOW INDEPENDENT MOVEMENT BETWEEN THE RICK AND WINDOW FRAME
d)	INSTALLING ADJUSTABLE ANCHORS OR TIES
EXPANSION JOINT SEALANTS:	
1.	COMPLY W/ ASTM C P20, GRADE NC., USE M
2.	CLASS 50 MINIMUM EXTENSIBILITY RECOMMENDED - CLASS 25 ALTERNATE
3.	CONSULT SEALANT MANUFACTURER'S LITERATURE FOR GUIDANCE REGARDING USE OF PRIMER AND BACKING MATERIALS
EXPANSION JOINT SEALANTS:	
USE BUILDING PAPER OR FLASHING TO SEPARATE BRICKWORK FROM DISSIMILAR MATERIALS, FOUNDATIONS AND SLABS	

Lyric at Norton Commons  
Prospect, Kentucky  
Bristol Development Group  
381 Mallory Station Rd, Suite 204  
Franklin, TN 37067

**c b a**  
charlan • brock  
associates  
architects • planners  
1770 fennell street  
maitland florida 32751-7208  
407.660.8900 f.407.875.9948  
www.cbarchitects.com

EXTERIOR ELEVATIONS  
date: 06/04/2019  
job no: 3789.15  
drawn by: EGR JAC, TQT  
reviewed by: CBA  
issue history:  
Δ Date

A2.02

Order Plans @ WWW.LDILLING.COM

6/21/2019 2:04:09 AM C:\AEC\Custom\Plan\Projects\3789.15\K1\NORTON COMMONS\K1\K1\_1501.dwg 1:50 1501.dwg