

IRRIGATION LEGEND

1-1/2" WATER METER, SYSTEM REQUIRES 50 GPM @ 65 PSI.
 IRRIGATION CONTRACTOR SHALL BE RESPONSIBLE TO VERIFY THE SYSTEM REQUIREMENTS AT SITE BEFORE STARTING CONSTRUCTION.
 WATTS #909-M1-QT-2", 2" REDUCED PRESSURE ASSEMBLY BACKFLOW PREVENTER, DETAIL-D.

WINTERIZATION ASSEMBLY, DETAIL-L.

1" COURTYARD IRRIGATION POINT OF CONNECTION. REFER TO NOTES ON PLANS.

MANUAL DRAIN VALVE. SCH 80 PVC TRUE UNION BALL VALVE. DETAIL-E.

BASELINE BASE STATION 3200C (V12) 2-WIRE POINT CONTROL CONTROLLER. COMPUTER CONTROLLER. CONTROLLER TO BE WIRE MOUNTED. IRRIGATION CONTRACTOR SHALL ALSO INSTALL A WIRE RAIN/FREEZE PROTECTION DEVICE. DETAIL-J, K, T.

NOTES:
 INSTALLER SHALL INSTALL LIGHTNING ARRESTOR PROTECTION DEVICES THROUGHOUT SYSTEM INSTALLATION PER MANUFACTURER'S HIGHEST SPECIFICATION LEVELS.
 INSTALLER SHALL INSTALL BASELINE MOISTURE SENSORS (DETAIL-V) AS SHOWN ON PLANS. CONTRACTOR SHALL INSTALL PER MANUFACTURER'S SPECIFICATIONS AND SHALL BE RESPONSIBLE TO PROGRAM RELATED HYDROZONES TO RESPECTIVE SOIL MOISTURE SENSORS (REFER TO NOTES ON PLANS).

INSTALLATION CONTRACTOR IS RESPONSIBLE TO ADHERE TO ALL CONTROLLER MANUFACTURER SPECIFICATIONS RELATED TO INSTALLATION OF 2-WIRE CONTROLS (INCLUDING BUT NOT LIMITED TO WIRE SIZING, WIRE RUNS, WIRE TYPE, DECODER INSTALLATION, SYSTEM GROUNDING, ETC).

ETHERNET CONNECTION WITH WILL BE REQUIRED AT CONTROLLER LOCATION INSIDE OF BUILDING. INSTALLATION CONTRACTOR SHALL BE RESPONSIBLE TO COORDINATE WITH ALL DISCIPLINES TO ENSURE THAT ETHERNET CONNECTION IS ON PLACE AND SUPPLIED TO CONTROLLER LOCATION.

INSTALLATION CONTRACTOR SHALL BE RESPONSIBLE TO COMPLETE AND SUBMIT THE BASELINE 5-YEAR WARRANTY APPLICATION WITH THEIR SUBMITTAL PACKAGE.

FOR BASELINE COORDINATION - CONTACT ANDY HUMPHREY AT 208.908.3229

RAIN BIRD 150-PESB-PRS OR 200-PESB-PRS PLASTIC ELECTRIC REMOTE CONTROL SCRUBBER VALVE, 1-1/2" OR 2" SIZE, MOUNTED WITH SCH 80 PVC TRUE UNION BALL VALVE WITH PRESSURE REGULATION DEVICES, MOUNTED WITH BASELINE SINGLE STATION DECODER. DETAIL-A.

RAIN BIRD 100-PESB-PRS PLASTIC ELECTRIC REMOTE CONTROL SCRUBBER VALVE, 1" SIZE, MOUNTED WITH SCH 80 PVC TRUE UNION BALL VALVE WITH PRESSURE REGULATION DEVICES, MOUNTED WITH BASELINE SINGLE STATION DECODER. DETAIL-A.

NOTE: ALL SPRAY HEADS AND ROTORS TO UTILIZED MPR NOZZLES.

RAIN BIRD 1806-SAM, 6" POP-UP LAWN SPRAY SPRINKLER, 12" RADIUS, FULL-2.0 GPM, HALF-1.0 GPM, QUARTER-0.5 GPM, 30 PSI. DETAIL-C.

RAIN BIRD 1806-SAM, 6" POP-UP LAWN SPRAY SPRINKLER, 15" RADIUS, FULL-4.0 GPM, HALF-2.0 GPM, QUARTER-1.0 GPM, 30 PSI. DETAIL-C.

RAIN BIRD 1806-SAM, 6" POP-UP LAWN SPRAY SPRINKLER, 8" RADIUS, FULL-1.1 GPM, HALF-0.55 GPM, QUARTER-0.28 GPM, 30 PSI. DETAIL-C.

RAIN BIRD 1806-SAM, 6" LAWN POP-UP SIDE STRIP SPRAY SPRINKLER, 9' X 18" RADIUS, 1.5 GPM, 30 PSI. DETAIL-C.

RAIN BIRD 1806-SAM, 6" LAWN SIDE STRIP SPRAY SPRINKLER, 4' X 30' RADIUS, 1.5 GPM, 30 PSI. DETAIL-C.

RAIN BIRD 1806-SAM, 6" LAWN END STRIP SPRAY SPRINKLER, 4' X 15' RADIUS, 1.0 GPM, 30 PSI. DETAIL-C.

RAIN BIRD 1805-SAM WITH 1404 BUBBLER NOZZLE AND PA-80 ADAPTER. 6" POP-UP TREE BUBBLER, 1.0 GPM, DETAIL-C.

RAIN BIRD DRIP ZONE ASSEMBLY KIT, MODEL #XCZ-100-PRB-COM, 1" SIZE, SIZE NOTED ON PLANS. TO BE INSTALLED WITH BASELINE SINGLE STATION DECODER (FD-101). DETAIL-M.

RAIN BIRD LOW FLOW DRIP ZONE ASSEMBLY KIT, MODEL #XCZ-LF-100-PRF. 1" SIZE, SIZE NOTED ON PLANS. TO BE INSTALLED WITH BASELINE SINGLE STATION DECODER (FD-101). DETAIL-M.

NOTE: FOR ANY DRIP ZONE WITH FLOW UNDER 3 GPM, MUST UTILIZE RAIN BIRD XCZ-LF-100-PRF, LOW FLOW DRIP VALVE ASSEMBLY.

POINT OF CONNECTION - DRIP LINE TUBING TO PVC PIPE, DETAIL-N.O.

DRIP TUBING: RAIN BIRD XFS DRIPLINE DRIP TUBING, .6 GPH, 12" CENTERS, STAKED EVERY TURN OR EVERY 4', INSTALL NETAFIM AIR RELIEF VALVE KIT IN 10" CIRCULAR VALVE BOX AT HIGH POINT OF EACH ZONE AND INSTALL NETAFIM DRIP DRAIN VALVE(S) IN 10" CIRCULAR VALVE BOX AT LOW POINT(S) OF EACH ZONE. DETAIL-N,O,P,Q.

NOTE:
 CONTRACTOR SHALL INSTALL RAIN BIRD DRIP OPERATION INDICATOR KIT AT ENDS OF EACH DRIP ZONE AREA.

IRRIGATION POT IRRIGATION, REFER TO DETAIL-R.

RAIN BIRD #5 QUICK COUPLING VALVE 1" SIZE. CONTRACTOR TO SUPPLY TWO QCV KEYS AND MATCHING HOSE SWIVELS. DETAIL-F.

SCH 80 PVC TRUE UNION BALL VALVE, SIZED SAME AS MAINLINE, MOUNTED IN CARSON VALVE BOX, DETAIL-B.

MAINLINE PIPE: 2" SIZE IF NOT NOTED (1-1/2" IN COURTYARDS). CLASS 200 PVC SOLVENT WELD PIPE, UTILIZING SCH 40 PVC SOLVENT WELD FITTINGS.

IRRIGATION SLEEVE: CLASS 200 PVC, REFER TO SLEEVING PLAN. DETAIL-H.

LATERAL LINE PIPE: CLASS 200 PVC SOLVENT WELD PIPE UTILIZING SCH 40 PVC SOLVENT WELD FITTINGS, SIZE NOTED.

ELECTRICAL CONDUIT SLEEVE, REFER TO NOTES ON PLANS.

TYPICAL VALVE INDICATOR

28.5 GALLONS PER MIN.

10 STATION NUMBER

1 1/2" VALVE SIZE

IRRIGATION PLANS

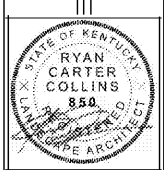
IRRIGATION DETAILS

Sheet Number: LA6.05

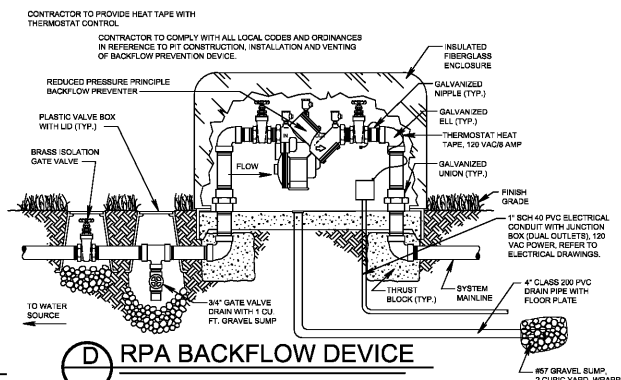
LYRIC AT NORTON COMMON
 Prospect, Kentucky
 Bristol Development Group
 380 Mallory Station Road, #304, Franklin, TN, 37064

DIXIE HITE
 PARTNERS
 150 W. JESSIE AVENUE
 LONGWOOD, FLORIDA 32750
 TEL 407.647.1777

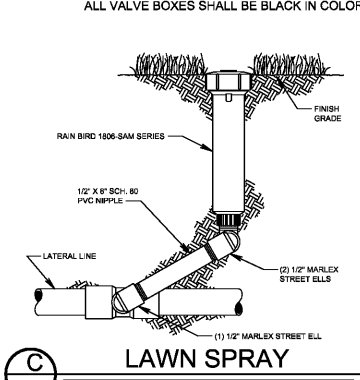
IRRIGATION PLANS
 IRRIGATION DETAILS



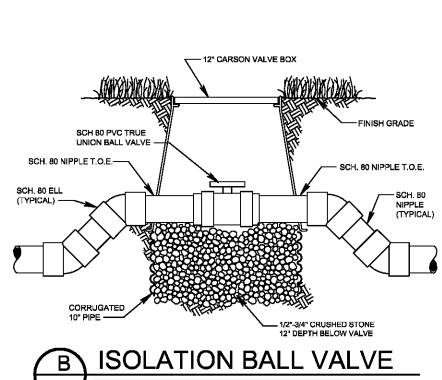
Sheet Number: LA6.05



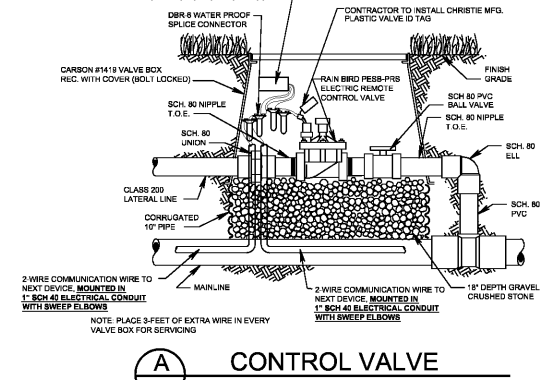
D RPA BACKFLOW DEVICE
 NTS
 * IRRIGATION CONTRACTOR SHALL SUBMIT BACKFLOW DETAIL TO LOCAL AUTHORITIES FOR APPROVAL BEFORE STARTING CONSTRUCTION.



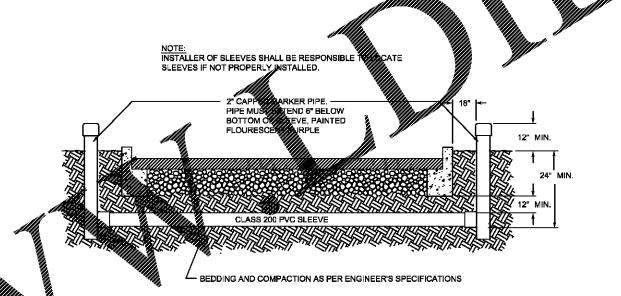
C LAWN SPRAY
 NTS



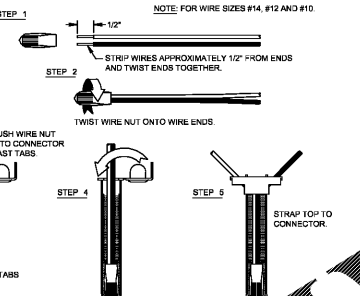
B ISOLATION BALL VALVE
 NTS



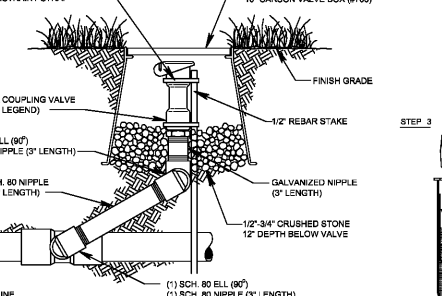
A CONTROL VALVE
 NTS



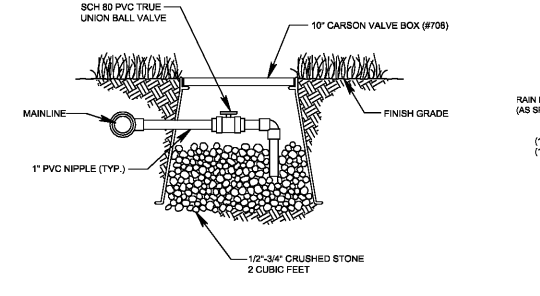
H SLEEVING
 NTS



G WIRE CONNECTION
 NTS
 3M-DBRY-6



F QUICK COUPLING VALVE
 NTS



E MANUAL DRAIN VALVE
 NTS

GENERAL NOTES

- ALL MAINLINES TO HAVE A MINIMUM OF 18" OF COVER. (CLASS 200 PVC PIPE, CLASS 200 PVC FOR 4" AND LARGER).
- ALL LATERAL AND SUB-MAIN PIPE TO HAVE A MINIMUM OF 12" OF COVER. (CLASS 200 PVC PIPE)
- NO ROCKS, BOULDER, OR OTHER EXTRANEUS MATERIALS TO BE USED IN BACKFILLING OF TRENCH.
- ALL PIPE TO BE INSTALLED AS PER MANUFACTURERS' SPECIFICATIONS.
- ALL THREADED JOINTS TO BE COATED WITH TEFLON TAPE OR LIQUID TEFLON.
- ALL LINES TO BE THOROUGHLY FLUSHED BEFORE INSTALLATION OF SPRINKLER HEADS.
- SPRINKLER AND RELATED EQUIPMENT TO BE INSTALLED AS PER DETAILS.
- ALL ELECTRICAL JOINTS TO BE MADE USING WATERPROOF CONNECTIONS AS SHOWN ON DETAILS.
- ALL EQUIPMENT NOT SPECIFIED IN THE LEGEND SHALL BE DETERMINED AND FURNISHED BY THE CONTRACTOR.
- NO ELECTRICAL CONNECTIONS SHALL BE MADE IN THE FIELD EXCEPT AT A VALVE CONTROL BOX OR ANOTHER VALVE BOX SPECIFICALLY FOR CONNECTIONS.
- ANY DISCREPANCY BETWEEN THIS SHEET AND THE PLAN IN THIS SET MUST BE REFERRED TO THE IRRIGATION CONSULTANT BY THE CONTRACTOR FOR CLARIFICATION BEFORE PROCEEDING WITH THE WORK.
- ALL TWO-WIRE CONTROL WIRES SHALL BE 14-2 BAWNE BICABLE, INSTALLED IN 1" SCH 40 ELECTRICAL CONDUIT.
- CONTRACTOR TO BE RESPONSIBLE FOR PROPER COVERAGE OF AREAS TO BE WATERED. I.E. ADJUST HEADS WHEN INSUFFICIENT COVERAGE DUE TO BLOCKAGE OR EXISTING OBSTRUCTIONS FEATURES.
- CONTRACTOR TO REFER TO LANDSCAPE PLAN TO KEEP SPRINKLER EQUIPMENT AND ACCESSORY MATERIAL FROM INTERFERING WITH PROPER PLANTING, I.E. SHALLOW ROOT BALL SIZE FOR PLANTING.
- CONTRACTOR SHALL PROVIDE EXPANSION COILS AT EACH WIRE CONNECTION IN VALVE BOX (WRAP AROUND 3/4" PIPE 12 TIMES).
- CONTRACTOR TO UTILIZE APPROPRIATE AUTOMATIC DRAIN DEVICE WHERE LOW HEAD DRAINAGE MAY OCCUR.
- ALL SPRINKLERS TO BE INSTALLED AS DETAILED ON PLANS.
- CONTRACTOR SHALL UTILIZE VALVE I.D. TAGS ON ALL REMOTE CONTROL VALVES.
- 24 VOLT WIRE SHALL BE COLOR CODED PER SEPARATE WIRE RUNS.
- CONTRACTOR SHALL INSTALL MANUFACTURERS' RECOMMENDED GROUNDING EQUIPMENT FOR POWER SUPPLY AND VALVE OUTPUT WITH PAIGE WIRE GROUND PLATE ASSEMBLY.
- CONTRACTOR SHALL INSTALL MANUFACTURERS' RECOMMENDATION ON FAULT GROUND AND LIGHTNING PROTECTION.
- CONTRACTOR GROUNDING MUST BE IN RAIN BIRD WIRE GROUNDING REQUIREMENTS.
- ALL MATERIAL TO BE SUPPLIED BY CONTRACTOR TO OWNER:
 A. TWO WRENCHES FOR DISASSEMBLING AND ADJUSTING EACH TYPE OF SPRINKLER HEADS AND VALVE AS APPLIED.
 B. TWO KEYS FOR EACH OF THE AUTOMATIC CONTROLLERS.
 C. TWO QUICK COUPLER KEYS WITH MATCHING HOSE SWIVELS.
 D. SYSTEMS DIAGRAMS TO IMPROVE CLARITY. ALL MAINLINE PIPING ELECTRIC VALVES AND WIRING ARE TO BE INSTALLED IN LANDSCAPE AREAS AND WITHIN PROPERTY BOUNDARIES. CONTRACTOR SHALL REFERENCE THE LANDSCAPE PLAN PRIOR TO THE INSTALLATION OF PIPING TO AVOID CONTACT WITH PLANT MATERIALS EXISTING OR NEW.
 CONTRACTOR TO ADD EXTENSION RISER TO POP-UP HEADS WHEN NEEDED FOR PROPER COVERAGE.
- CONTRACTOR SHALL INSTALL SPRINKLER EQUIPMENT 12" FROM FOUNDATIONS. ALSO INSTALL SPRINKLERS 4" FROM CURB OR WALKS.
- PRIOR TO BID IRRIGATION CONTRACTOR SHALL VERIFY RIGHT-OF-WAY AND BACKFLOW REQUIREMENTS. NO LATER THAN FIVE DAYS BEFORE BID SUBMITTALS CONTRACTOR SHALL NOTIFY CONSULTANT OF ANY CHANGES FROM PLANS AND SPECIFICATIONS.
- IRRIGATION CONTRACTOR SHALL PROVIDE THE OWNER AND LANDSCAPE ARCHITECT WITH A REPRODUCIBLE CROSS MEASURED AS-BUILT DRAWING OF THE INSTALLED IRRIGATION SYSTEM IN AUTOCAD 2010 FORMAT BEFORE FINAL ACCEPTANCE.
- A 1-YEAR WARRANTY PERIOD SHALL BE PROVIDED FOR SYSTEM AFTER SUBSTANTIAL COMPLETION IS ACCEPTED. START UP AND ADJUSTING OF SYSTEM IN SPRING TIME SHALL BE INCLUDED IN WARRANTY.
- PRIOR TO BID, CONTRACTOR SHALL VERIFY THAT ALL MATERIALS, INSTALLATION PARAMETERS AND OPERATIONS CONFORM TO ALL APPLICABLE CODES AND ORDINANCES. NO LATER THAN FIVE DAYS BEFORE BID SUBMITTALS CONTRACTOR SHALL NOTIFY IRRIGATION CONSULTANT/DESIGNER OF ANY CHANGES REQUIRED DUE TO CURRENT CODE OR ORDINANCE DISCREPANCIES. IF CONTRACTOR DOES NOT COMPLY TO THIS NOTIFICATION, THE CONTRACTOR SHALL BE RESPONSIBLE FOR ALL NECESSARY INSTALLATION CHANGE AND REDESIGN COSTS FOR NON-COMPLIANCE.
- UNLESS OTHERWISE NOTED, THE CONTRACTOR MUST COMPLETE 2 PRESSURE TESTS OF THE IRRIGATION SYSTEM MAINLINE (BOTH TO SHOW NO DROP IN PRESSURE DURING DURATION OF TEST).
 A. 2-HOUR PRESSURE TEST AT 1.5 TIMES THE SYSTEM STATIC PRESSURE
 B. 24-HOUR PRESSURE TEST AT THE SYSTEM STATIC PRESSURE
- IRRIGATION INSTALLATION CONTRACTOR SHALL PROVIDE OWNER WITH A COLOR-CODED ZONES DIAGRAM PLAN, 8-1/2"X11" LAMINATED SHEET(S), TO IDENTIFY CONTROLLER STATION TO THE CONTROL VALVE NUMBER FOR EACH CONTROLLER. TO BE LOCATED IN ADHESIVE POUCH ATTACHED INSIDE OF CONTROLLER(S).

- NOTES:
- ALL SPRINKLER TO BE MOUNTED ON MARLEX ELLS OR UNITIZED SWING JOINTS (AS SPECIFIED ON DETAILS).
 - CONTRACTOR TO UTILIZE A AUTOMATIC DRAIN CHECK VALVE DEVICE WHERE LOW HEAD DRAINAGE MAY OCCUR.
 - ALL TWO-WIRE CABLE TO BE MINIMUM SIZE OF 14-2 BASELINE BICABLE
 - ALL TWO-WIRE CABLE TO BE INSTALLED IN 1" SCH 40 PVC ELECTRICAL CONDUIT.
 - ALL ELECTRICAL CONDUITS OPENINGS TO BE FOAM SEALED.
 - ALL WIRE SPLICES TO BE MADE WITH 3M DBRY-6 CONNECTORS MOUNTED IN A MINIMUM OF 10" CARSON VALVE BOX
 - ALL PIPING AND WIRING UNDER HARDTOPS WILL BE IN CLASS 200 PVC PIPE SLEEVE.
 - SURGE ARRESTORS SHALL BE INSTALLED EVERY 300' OR EVERY 4 DECODERS (WHICHEVER IS SHORTER) ALONG TWO-WIRE PATH. ARRESTORS SHALL ALSO BE INSTALLED AT ALL TERMINAL ENDS OF TWO-WIRE CABLE PATHS (STAR CONFIGURATION). REFER TO DETAILS.
 - INSTALLATION CONTRACTOR SHALL ADHERE TO ALL MANUFACTURER SPECIFICATIONS FOR TWO-WIRE CONTROL SYSTEM INSTALLATION (WIRE SIZING, WIRE LENGTH OF RUNS, GROUNDING, ETC).

