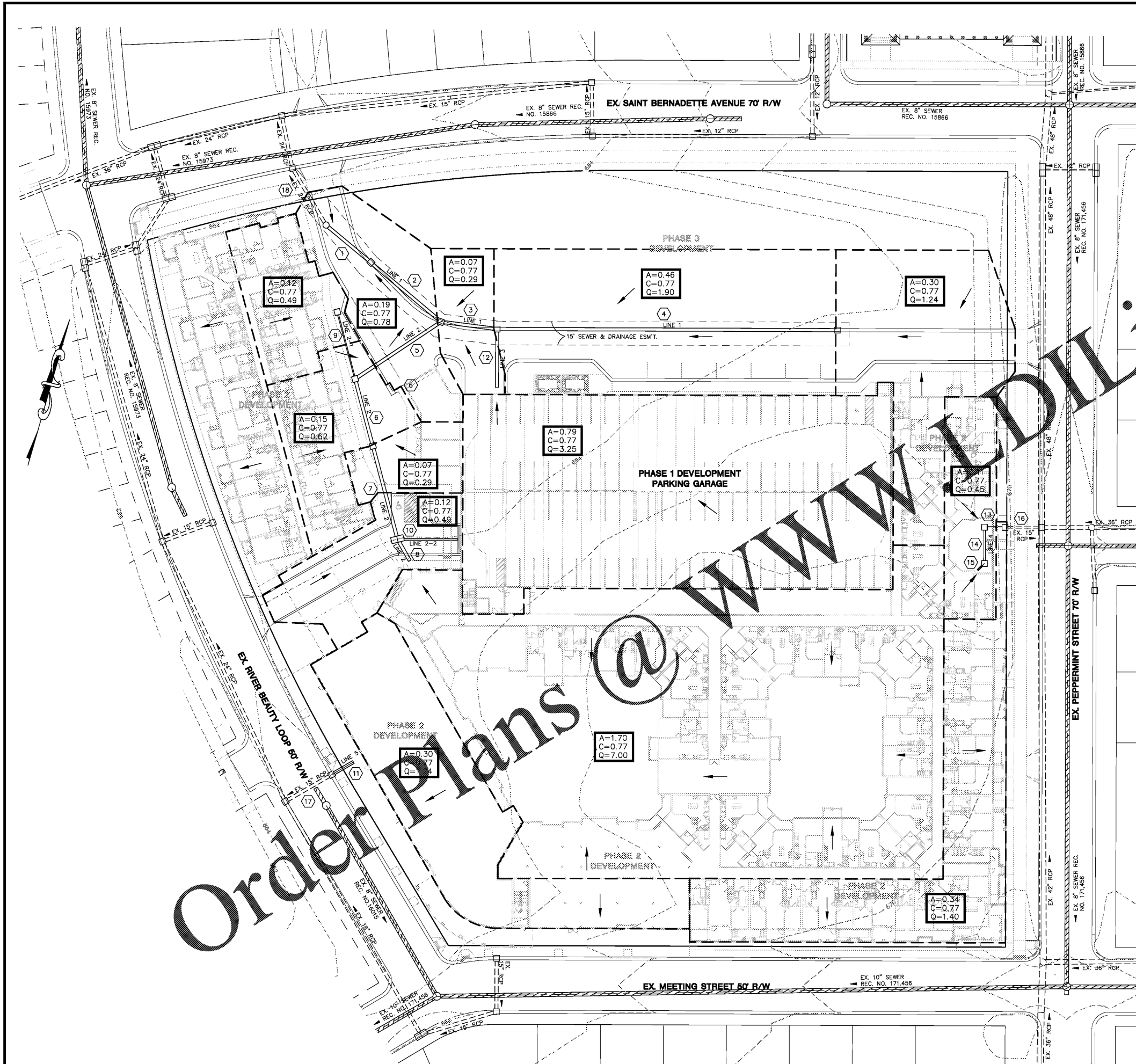


K:\095\3061\PLAN\CU100.dwg, CUT00, 9/27/2018 11:55:20 AM



LEGEND

- EXISTING ELEVATION
- PROPOSED STORM SEWER AND CATCH BASIN
- PROPOSED STORM SEWER AND MANHOLE
- EXISTING STORM SEWER AND CATCH BASIN
- DRAINAGE AREA BOUNDARY
- EXISTING SANITARY SEWER AND MANHOLE
- OVERLAND DRAINAGE FLOW DIRECTION

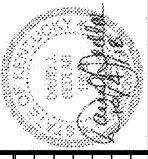
PIPE CHART

PIPE NO.	A (ACRES)	Q (CFS)	LENGTH (FEET)	SIZE (INCHES)	SLOPE (PERCENT)	CAPACITY (GPM)	I (INCHES)	CAPACITY (CFS)	FULL FLOW VEL. (FPS)	C	
1	3.97	15.77	38	24	0.50	6.25	10.9	5.16	17.33	5.52	0.77
2	3.78	15.14	51	24	0.50	6.22	10.7	5.20	17.33	5.52	0.77
3	1.55	6.23	36	24	0.50	5.06	10.6	5.22	17.33	5.52	0.77
4	0.30	1.24	216	15	2.50	5.96	10.0	5.35	11.06	9.02	0.77
5	2.16	8.77	44	24	0.54	5.69	10.4	5.27	18.01	5.73	0.77
6	1.89	7.71	44	24	0.55	5.55	10.3	5.29	18.17	5.79	0.77
7	1.13	4.47	61	24	0.54	5.46	10.1	5.33	18.01	5.73	0.77
8	1.70	7.00	16	18	1.25	7.37	10.0	5.35	12.72	7.20	0.77
9	0.12	0.49	44	12	1.86	4.20	10.0	5.35	5.26	6.70	0.77
10	0.12	0.49	38	12	5.00	5.95	10.0	5.35	8.63	10.99	0.77
11	0.30	1.24	16	15	1.25	4.66	10.0	5.35	7.82	6.38	0.77
12	0.79	3.25	36	18	1.08	5.71	10.0	5.35	11.83	6.69	0.77
13	0.11	0.45	13	15	12.31	7.72	10.0	5.35	24.55	20.01	0.77
14	0.11	0.45	23	15	1.30	3.51	10.0	5.35	7.98	6.50	0.77
15	0.11	0.45	6	15	1.67	3.83	10.0	5.35	9.04	7.37	0.77
16	0.45	1.85	23	15	0.50	3.74	10.0	5.35	4.95	4.03	0.77
17	0.45	1.85	34	15	1.09	4.97	10.0	5.35	7.31	5.95	0.77
18	3.97	15.77	40	24	0.50	6.25	10.9	5.16	17.33	5.52	0.77

NOTE: CALCULATIONS ARE FOR 10 YEAR DESIGN STORM. n = 0.012
 RUNOFF COEFFICIENTS BASED ON LAND USE CRITERIA FOR EACH ZONE OF THE NORTON COMMONS DEVELOPMENT.
 VILLAGE CENTER C = 0.77
 VILLAGE GENERAL C = 0.63
 VILLAGE EDGE C = 0.47

Order Plans @ WWW.DIPLINE.COM

SABAK, WILSON & LINGO, INC
 ENGINEERS, LANDSCAPE ARCHITECTS & PLANNERS
 LOUISVILLE, KENTUCKY 40202
 608 S. THIRD STREET, THE HENRY CLAY

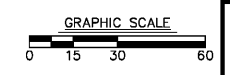


NO.	REVISION	DATE
1	ISSUED FOR PERMIT	9/27/18

SHEET TITLE: COMPOSITE DRAINAGE PLAN
 PROJECT TITLE: LYRIC AT NORTON COMMONS (LOT N701)
 OWNER / DEVELOPER: BRISTOL LYRIC PARTNERS LLC
 38 WILLOW STATION ROAD, STE. 304
 BRISTOL, KY 40303
 (615) 398-8009

JOB NO. 3061
 SCALE: 1" = 30'-0"
 DATE: 8/31/18

DRAWING NO. **CU100**
 SHEET 8 OF 10



SUB#1008