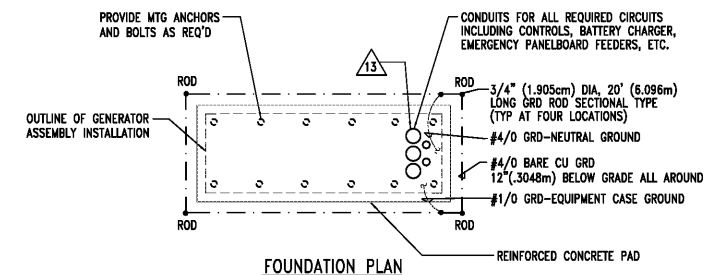
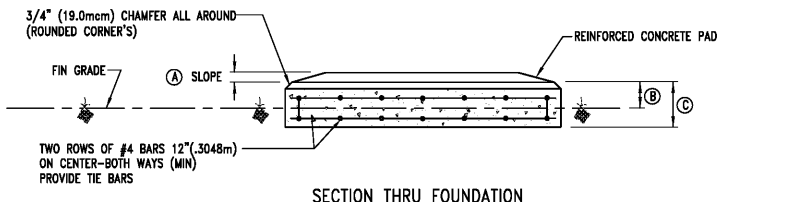
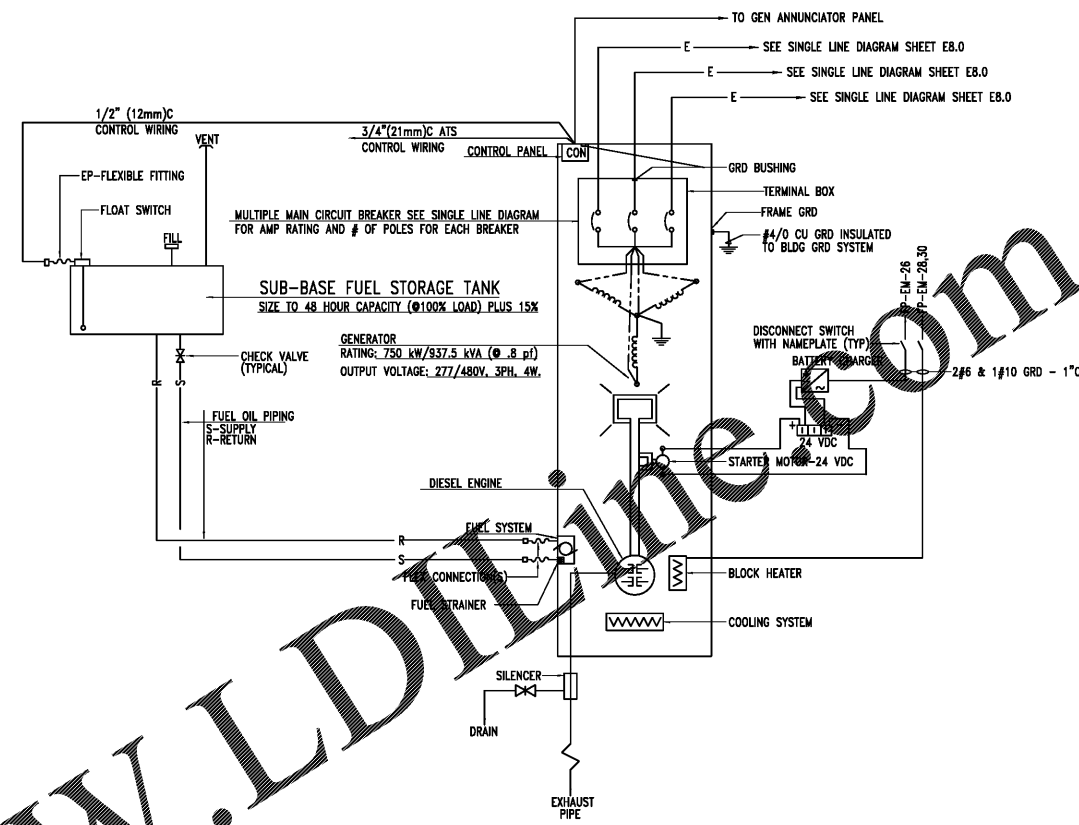
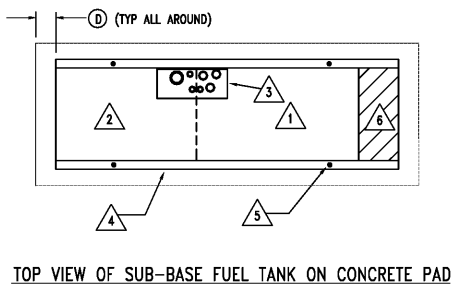


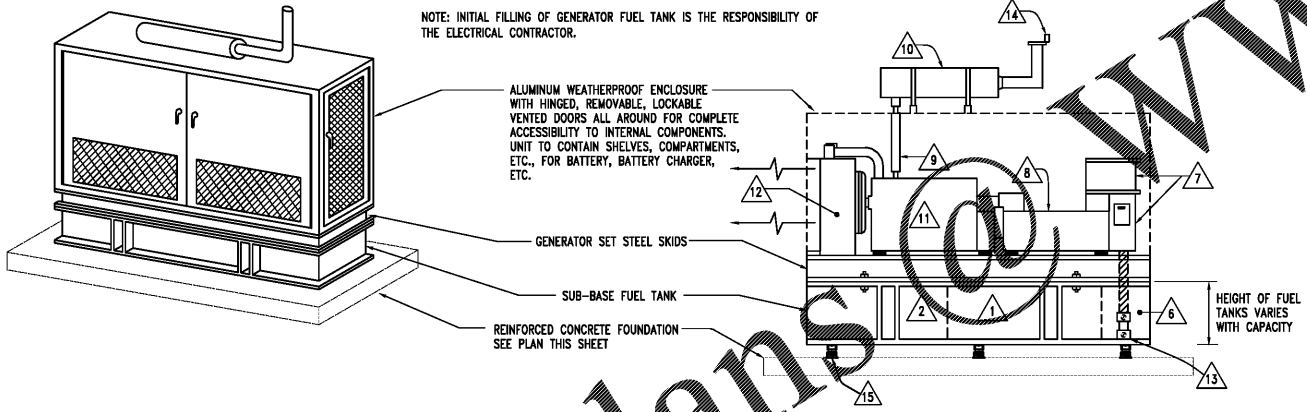
REF	ENGLISH	SI
A	1/4"	6.35mm
B	0'-4"	101.6mm
C	0'-10"	254.0mm
D	1'-0"	304.8mm



- KEYED NOTES**
- 1 TANK COMPARTMENT - COLD SIDE
 - 2 TANK COMPARTMENT - HOT SIDE
 - 3 VARIOUS CONNECTIONS PER MANUFACTURER'S REQUIREMENTS AND APPLICABLE CODES, INCLUDING NORMAL AND EMERGENCY VENTS, FUEL FILL OPENING WITH CAP, FUEL LEVEL GAUGE, FUEL SUPPLY AND RETURN AND DRAIN LINES, LOW LEVEL SWITCH, ETC.
 - 4 STEEL RAILS
 - 5 HOLES FOR MOUNTING GENERATOR SKIDS
 - 6 ELECTRICAL STUB-UP AREA. INSTALL EP SEAL-OFF FITTING IN EACH CONDUIT ENTERING THIS SPACE.
 - 7 ELECTRICAL EQUIPMENT (CIRCUIT BREAKER, CONTROL PANEL, ETC.)
 - 8 GENERATOR
 - 9 FLEXIBLE EXHAUST SYSTEM
 - 10 EXHAUST CRITICAL SILENCER
 - 11 DIESEL ENGINE SYSTEM
 - 12 FAN AND RADIATOR ASSEMBLY
 - 13 CONDUIT STUB-UPS, SEAL-OFF FITTINGS AND CONVERSIONS TO WEATHERPROOF FLEXIBLE CONNECTIONS TO ELECTRICAL APPARATUS. SEE DETAIL 3 THIS SHEET.
 - 14 RAIN CAP
 - 15 SPRING ISOLATORS



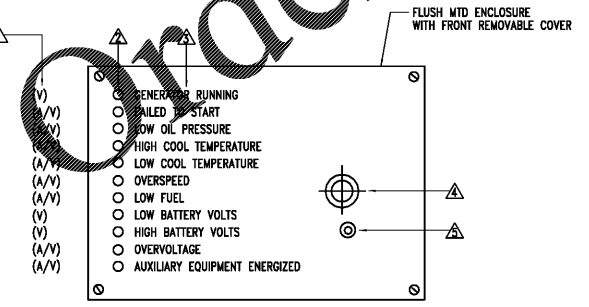
2 DETAIL - GENERATOR SCHEMATIC - TYPICAL FOR EACH OF TWO GENERATORS
NO SCALE



1 GENERATOR DETAILS AND ELEVATIONS - TYPICAL
NO SCALE

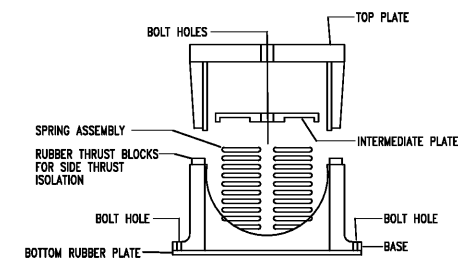
STANDBY GENERATOR SYSTEM NOTES

1. STANDBY GENERATOR SYSTEM SHALL CONSIST OF BUT NOT BE LIMITED TO THE FOLLOWING:
 - a. GENERATOR SETS
 - b. DIESEL FUELING SYSTEM FOR GENERATOR
 - c. POWER SYSTEM
 - d. AUTOMATIC TRANSFER SYSTEM
 - e. CONTROLS
 - f. STARTING SYSTEM
 - g. COOLING SYSTEM
 - h. EXHAUST SYSTEM
 - i. LUBRICATION SYSTEM
2. INSTALLATION SHALL COMPLY WITH THE REQUIREMENTS OF THE NATIONAL ELECTRICAL CODE (NEC), NEMA, NESC AND NATIONAL FIRE PROTECTION AGENCY (NFPA).
3. ALL CONDUCTIVE PARTS OF EQUIPMENT, ENCLOSURES, FRAMES, ETC., SHALL BE GROUNDED.
4. ALL CLEARANCES SHALL BE MAINTAINED PER NESC AND NEC. ALL PARTS, DEVICES, EQUIPMENT, ETC. WHICH REQUIRE MAINTENANCE, ADJUSTMENT, OPERATION OR EXAMINATION DURING NORMAL NETWORK OPERATION SHALL BE ARRANGED SO AS TO BE ACCESSIBLE BY THE PROVISION OF ADEQUATE WORKING SPACES, WORKING FACILITIES AND CLEARANCES, UNLESS NOTED OTHERWISE ALL CLEARANCES ARE MEASURED FROM SURFACE TO SURFACE.
5. ALL DIMENSIONS INDICATED IN THESE DOCUMENTS ARE FOR REFERENCE AND COORDINATION PURPOSES ONLY. THE CONTRACTOR IS RESPONSIBLE FOR VERIFYING ALL DIMENSIONS IN THE FIELD.
6. WIRING SYSTEMS SHALL BE IN ACCORDANCE WITH NEC AND THE FOLLOWING:
 - a. SEE SINGLE LINE DIAGRAM FOR POWER SYSTEM REQUIREMENTS.
 - b. CONTROL WIRING SHALL BE INSTALLED IN CONDUITS INDICATED. WIRING TO BE IN ACCORDANCE WITH MANUFACTURER'S REQUIREMENTS FOR THE EQUIPMENT SPECIFIED. COORDINATE WITH SHOP DRAWINGS.
 - c. PROVIDE FLEXIBLE CONDUIT CONNECTIONS TO THE GENERATOR SET.
7. DIESEL FUEL SYSTEM SEE PLUMBING DRAWINGS FOR DETAILS.
8. PROVIDE SEAL-OFF FITTINGS FOR ALL CONDUITS TO/ FROM ENGINE/GENERATOR.



3 DETAIL - REMOTE GENERATOR ANNUNCIATOR PANEL "6A"
NO SCALE

- NOTES**
- 1 COLUMN SHOWN INDICATES TYPE OF MALFUNCTION SIGNAL AT THE REMOTE PANEL (V - VISUAL, A/V - AUDIBLE AND VISUAL).
 - 2 LED LAMP INDICATORS
 - 3 LAMP LEGEND
 - 4 AUDIBLE ALARM DEVICE
 - 5 AUDIBLE ALARM DEVICE SILENCE SWITCH



4 DETAIL - TYPICAL VIBRATION ISOLATOR
NO SCALE

architects inc.
Montgomery, Alabama

CIP-2017-001
UPGRADES TO THE MOBILE COUNTY METRO JAIL
For The MOBILE COUNTY COMMISSION
MOBILE, ALABAMA



DRAWN	J.C.T.	CHECK	K.A.G.
DATE	April 2, 2019 RTA		
REVISED			
REVISED			

SHEET TITLE	
GENERATOR DETAILS & NOTES	
COS NO.	PH&J 1801-GV
SEQUENCE NO.	175 OF 175

E8.2

© PH&J ARCHITECTS, INC. ALL RIGHTS RESERVED

GA Gunn & Associates, P.C.
Consulting Engineers

3102 Highway 14
Montgomery, AL 36104
Tel: 334.285.1273

5100 Southland Drive Suite 250
Hoover, AL 35226
GAP18-192