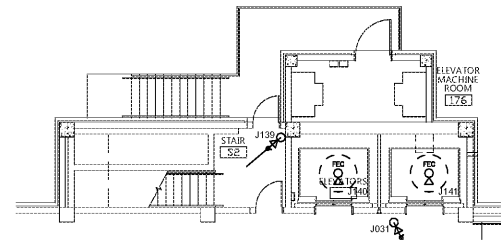


GENERAL NOTES:

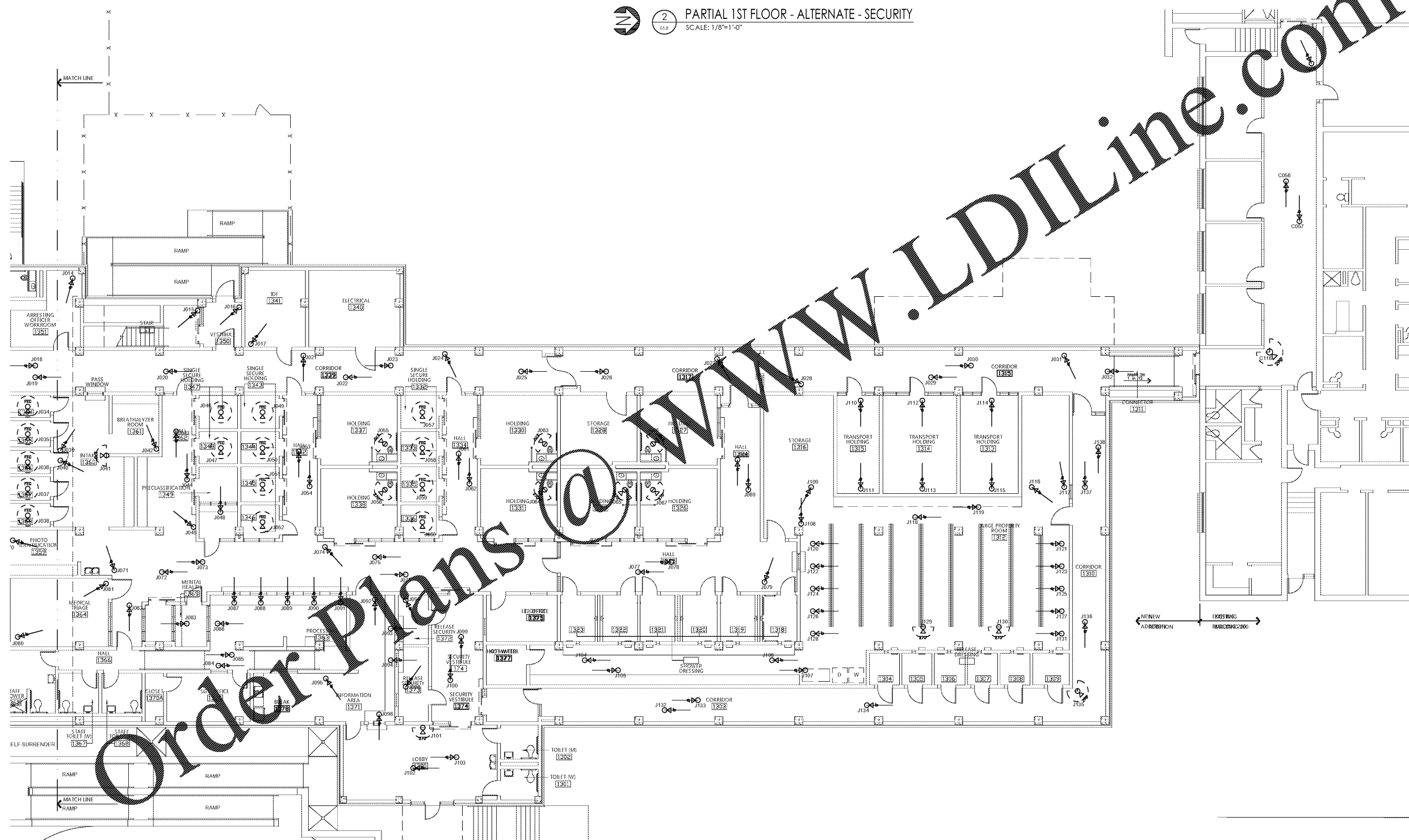
1. ELECTRICAL CONTRACTOR RESPONSIBLE FOR ALL RACEWAY FOR SECURITY CAMERAS. PROVIDE SINGLE GANG JUNCTION BOXES AND 3/4" CONDUIT FROM EACH CAMERA TO THE EXISTING IDF. COORDINATE ALL LOCATIONS AND MOUNTING HEIGHT ROUGH-IN WITH SECURITY CONTRACTOR PRIOR TO INSTALLATION.
2. COORDINATE ALL LOCATIONS AND CONDUIT REQUIREMENTS WITH ARCHITECTURAL SECURITY SHEETS PRIOR TO BIDS. PROVIDE CONDUIT TO ADDITIONAL SECURITY DEVICES SHOWN ON ARCHITECTURAL SECURITY PLANS THAT ARE NOT SHOWN ON THE E-SHEETS.

NOTE:

ALL CONDUITS/CIRCUITRY SHALL BE CONCEALED IN THE CONCRETE SLABS, BEHIND WALLS, OR IN CHASES.

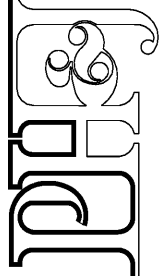


2 PARTIAL 1ST FLOOR - ALTERNATE - SECURITY
SCALE: 1/8"=1'-0"



1 1ST FLOOR PLAN - BASE BID - SECURITY
SCALE: 1/8"=1'-0"

architects inc.
Alabama
Montgomery,



CIP-2017-001
UPGRADES TO THE MOBILE COUNTY METRO JAIL
FOR THE MOBILE COUNTY COMMISSION
MOBILE, ALABAMA



DRAWN: J.C.T.	CHECK: K.A.G.
DATE: April 2, 2019 RTA	
REVISED:	
REVISED:	
SHEET TITLE SALLY PORT - 1ST FLOOR PLAN - BASE BID - SECURITY	
JOB NO. PH&J 1801-GV	
SEQUENCE NO. 165 OF 175	

1/8" = 1'-0"

GRAPHIC SCALE

GA Gunn & Associates, P.C.
Consulting Engineers
3102 Highway 14
Montgomery, AL 36104
500 Southland Drive Suite 250
Hoover, AL 35226
Tel: 334.285.1273
GAP18-192

E5.8

© PH&J ARCHITECTS, INC.
ALL RIGHTS RESERVED