

SHEET NOTES:

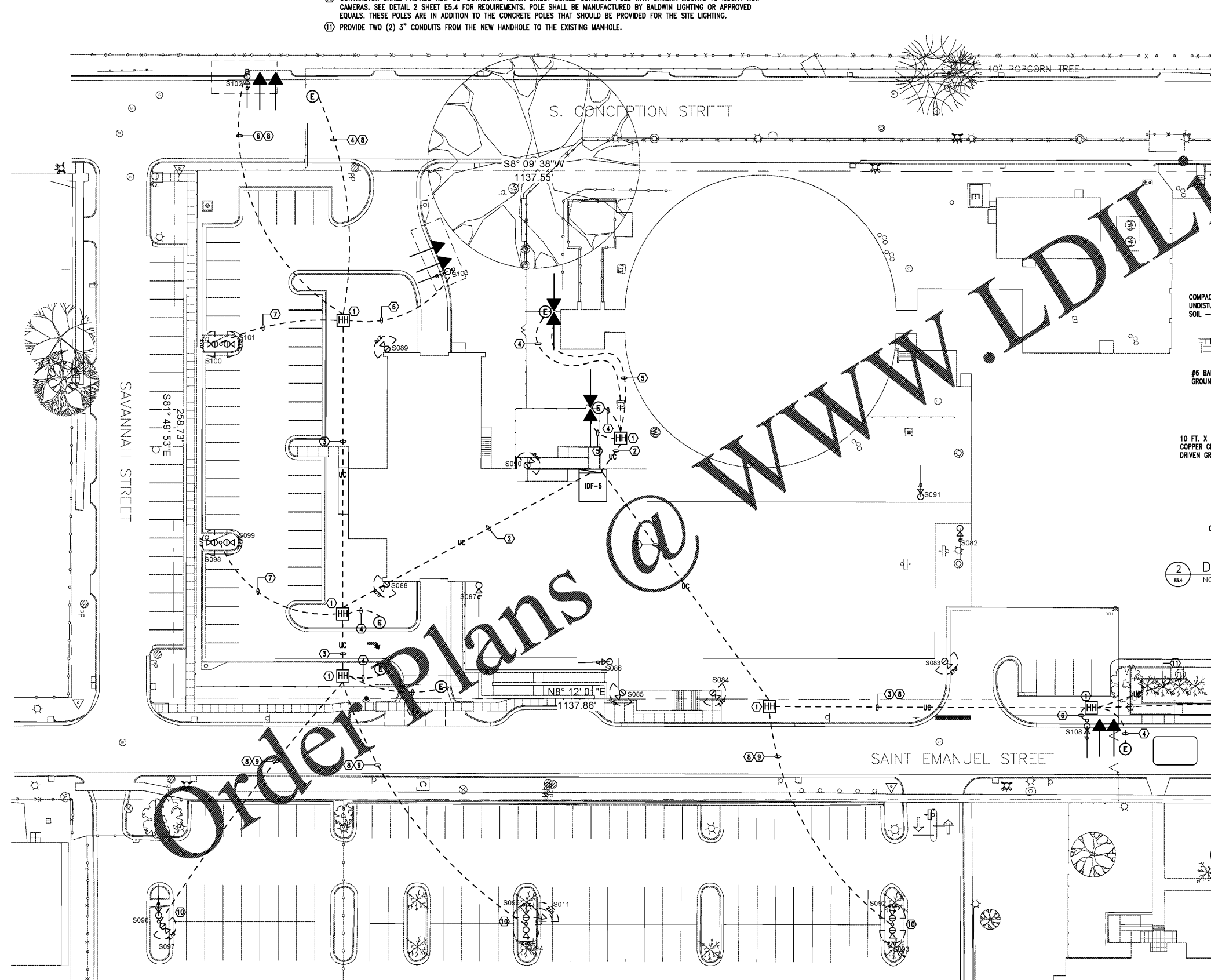
- ① PROVIDE 30"x24"x18" NEMA 12 TRAFFIC RATED COMPOSITE CONCRETE BOX. PROVIDE 6" BED OF #57 STONE AS FOUNDATION.
- ② PROVIDE TWO (2) 3" CONDUITS FROM THE IDF-6 TO THE NEW HANDHOLE.
- ③ PROVIDE TWO (2) 3" CONDUITS FROM THE NEW HANDHOLE TO NEW HANDHOLE.
- ④ PROVIDE ONE (1) 1" CONDUIT FROM NEW HANDHOLE TO THE ELECTRONIC SECURITY DEVICE.
- ⑤ PROVIDE ONE (1) 1" CONDUIT FROM NEW HANDHOLE TO THE INTERCOM DEVICE.
- ⑥ PROVIDE ONE (1) 1" CONDUIT FROM NEW HANDHOLE TO THE PEDESTAL FOR INTERCOM DEVICE AND CAMERA.
- ⑦ PROVIDE ONE (1) 1" CONDUIT FROM NEW HANDHOLE TO THE NEW LIGHT POLE.
- ⑧ CONTRACTOR SHALL BORE CONDUIT WITH HDPE TYPE CONDUIT.
- ⑨ PROVIDE ONE (1) 1" CONDUIT FROM NEW HANDHOLE TO THE NEW CAMERA POLE.
- ⑩ CONTRACTOR SHALL PROVIDE NEW 32" OCTAGONAL TENON DIRECT BURIED CONCRETE POLE WITH CAMERA MOUNTS TO MOUNT NEW CAMERAS. SEE DETAIL 2 SHEET E5.4 FOR REQUIREMENTS. POLE SHALL BE MANUFACTURED BY BALDWIN LIGHTING OR APPROVED EQUALS. THESE POLES ARE IN ADDITION TO THE CONCRETE POLES THAT SHOULD BE PROVIDED FOR THE SITE LIGHTING.
- ⑪ PROVIDE TWO (2) 3" CONDUITS FROM THE NEW HANDHOLE TO THE EXISTING MANHOLE.

GENERAL NOTES:

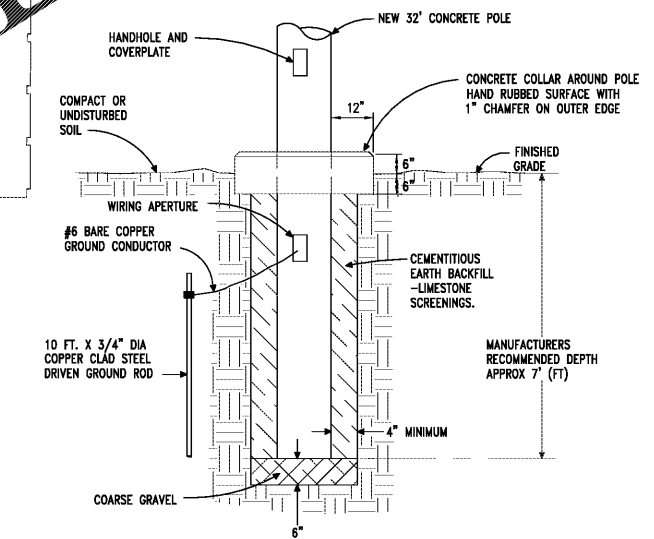
1. COORDINATE EXACT ROUGH-IN LOCATIONS WITH SECURITY CONTRACTOR PRIOR TO INSTALLATION. COORDINATE ALL LOCATIONS AND CONDUIT REQUIREMENTS WITH ARCHITECTURAL SECURITY SHEETS PRIOR TO BIDS. PROVIDE CONDUIT TO ADDITIONAL SECURITY DEVICES SHOWN ON ARCHITECTURAL SECURITY PLANS THAT ARE NOT SHOWN ON THE E-SHEETS.

NOTE:

ALL CONDUITS/CIRCUITRY SHALL BE CONCEALED IN THE CONCRETE SLABS, BEHIND WALLS, OR IN CHASES.



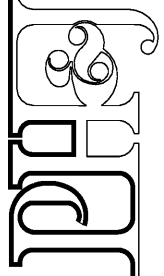
- NOTES:**
1. CONCRETE SHALL TEST TO BE 4,000 PSI STRENGTH IN 28 DAYS.
 2. SEE LIGHT FIXTURE SCHEDULE FOR LIGHTING CONFIGURATION.
 3. ALL DIMENSIONS SHALL BE COORDINATED AND COMPLY WITH GEOTECHNICAL REPORT.
 4. INSTALLATION SHALL COMPLY WITH MANUFACTURER'S RECOMMENDATIONS IF MORE STRINGENT.
 5. POLE BASE SHALL BE IN FULL CONTACT WITH THE CONCRETE BASE.



②
E5.4
DETAIL - TYPICAL CONCRETE DIRECT BURIAL CAMERA POLE
NO SCALE

Order Plans @

architects inc.
Montgomery, Alabama



CIP-2017-001
UPGRADES TO THE MOBILE COUNTY METRO JAIL
For The MOBILE COUNTY COMMISSION
MOBILE, ALABAMA



DRAWN	J.C.T.	CHECK	K.A.G.
DATE	April 2, 2019 RTA		
REVISED			
REVISED			

SHEET TITLE	SITE PLAN PART "A" - SECURITY
JOB NO.	PH&J 1801-GV
SEQUENCE NO.	163 OF 175

E5.4

© PH&J ARCHITECTS, INC. ALL RIGHTS RESERVED

SCALE: 1" = 20'-0"

GRAPHIC SCALE

GA Gunn & Associates, P.C.
Consulting Engineers

1102 Highway 14
Montgomery, AL 36104
Tel: 334.285.1273

500 Southland Drive Suite 250
Hoover, AL 35226
GAP18-192