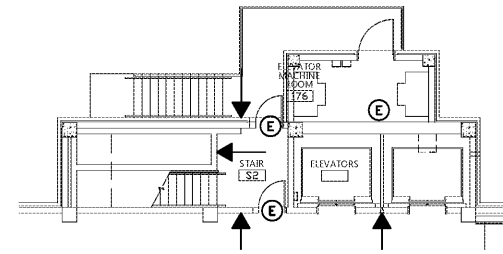


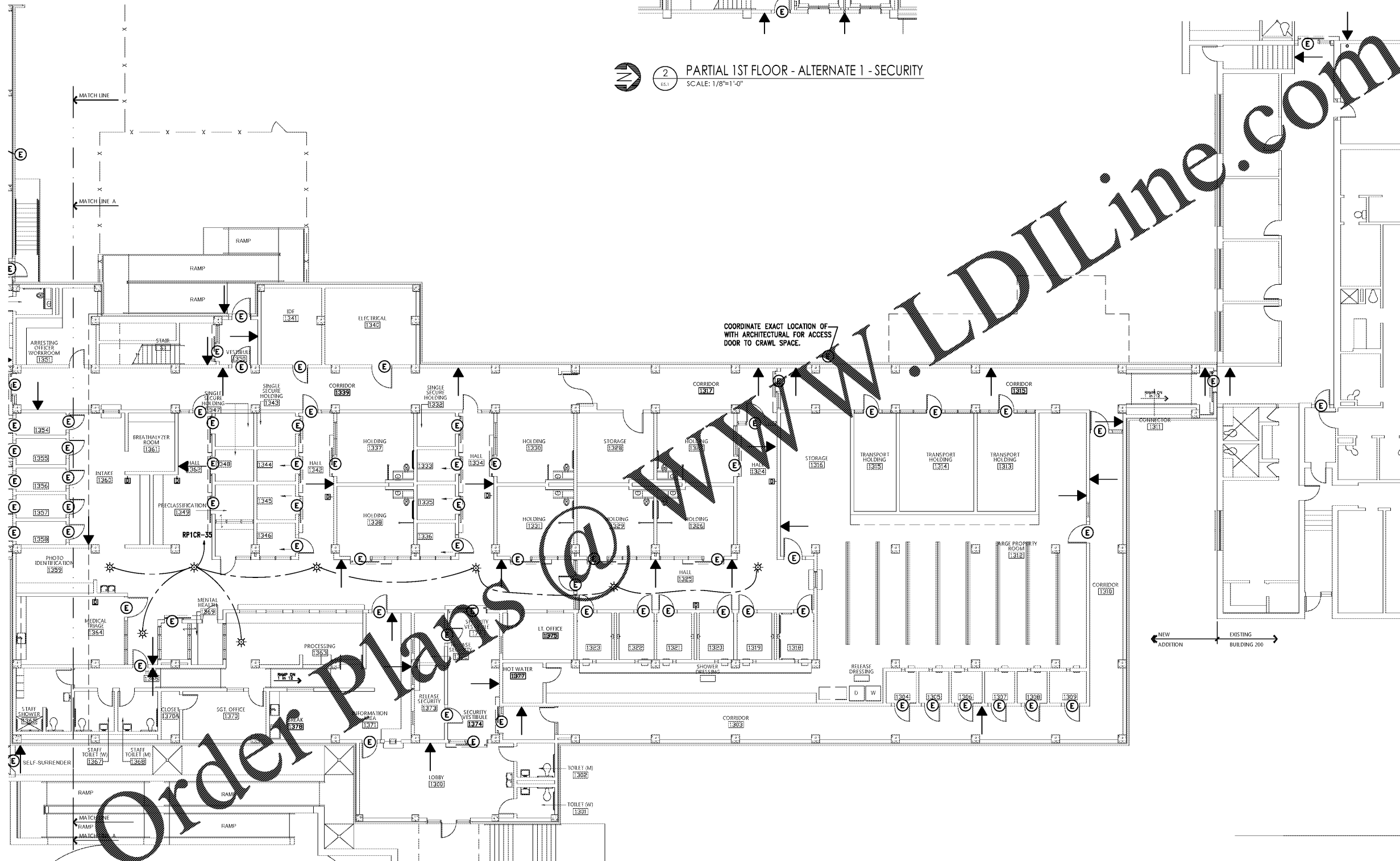
**GENERAL NOTES:**

1. COORDINATE ALL LOCATIONS AND CONDUIT REQUIREMENTS WITH ARCHITECTURAL SECURITY SHEETS PRIOR TO BIDS. PROVIDE CONDUIT TO ADDITIONAL SECURITY DEVICES SHOWN ON ARCHITECTURAL SECURITY PLANS THAT ARE NOT SHOWN ON THE E-SHEETS.

**NOTE:**  
ALL CONDUITS/CIRCUITRY SHALL BE CONCEALED IN THE CONCRETE SLABS, BEHIND WALLS, OR IN CHASES.



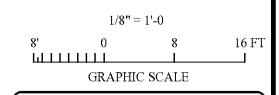
2 PARTIAL 1ST FLOOR - ALTERNATE 1 - SECURITY  
SCALE: 1/8"=1'-0"



COORDINATE EXACT LOCATION OF WITH ARCHITECTURAL FOR ACCESS DOOR TO CRAWL SPACE.

Order Plans @ WWW.LDILine.com

1 1ST FLOOR PLAN - BASE BID - SECURITY  
SCALE: 1/8"=1'-0"



Gunn & Associates, P.C.  
Consulting Engineers  
3102 Highway 14  
Milledgeville, AL 36684  
500 Southland Drive Suite 250  
Hoover, AL 35226  
Tel: 334.285.1273  
GAP18-192

CIP-2017-001  
UPGRADES TO THE MOBILE COUNTY METRO JAIL  
FOR THE MOBILE COUNTY COMMISSION  
MOBILE, ALABAMA



DRAWN	J.C.T.	CHECK	K.A.G.
DATE	April 2, 2019 RTA		
REVISED			
REVISED			

SHEET TITLE  
SALLY PORT - 1ST FLOOR  
PLAN - BASE BID -  
SECURITY

COR NO.  
PH&J 1801-GV

SEQUENCE NO.  
158 OF 175

E5.1  
© PH&J ARCHITECTS, INC.  
ALL RIGHTS RESERVED

architects inc.  
Montgomery,  
Alabama