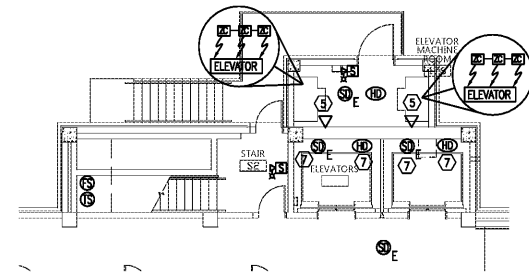


GENERAL NOTES:

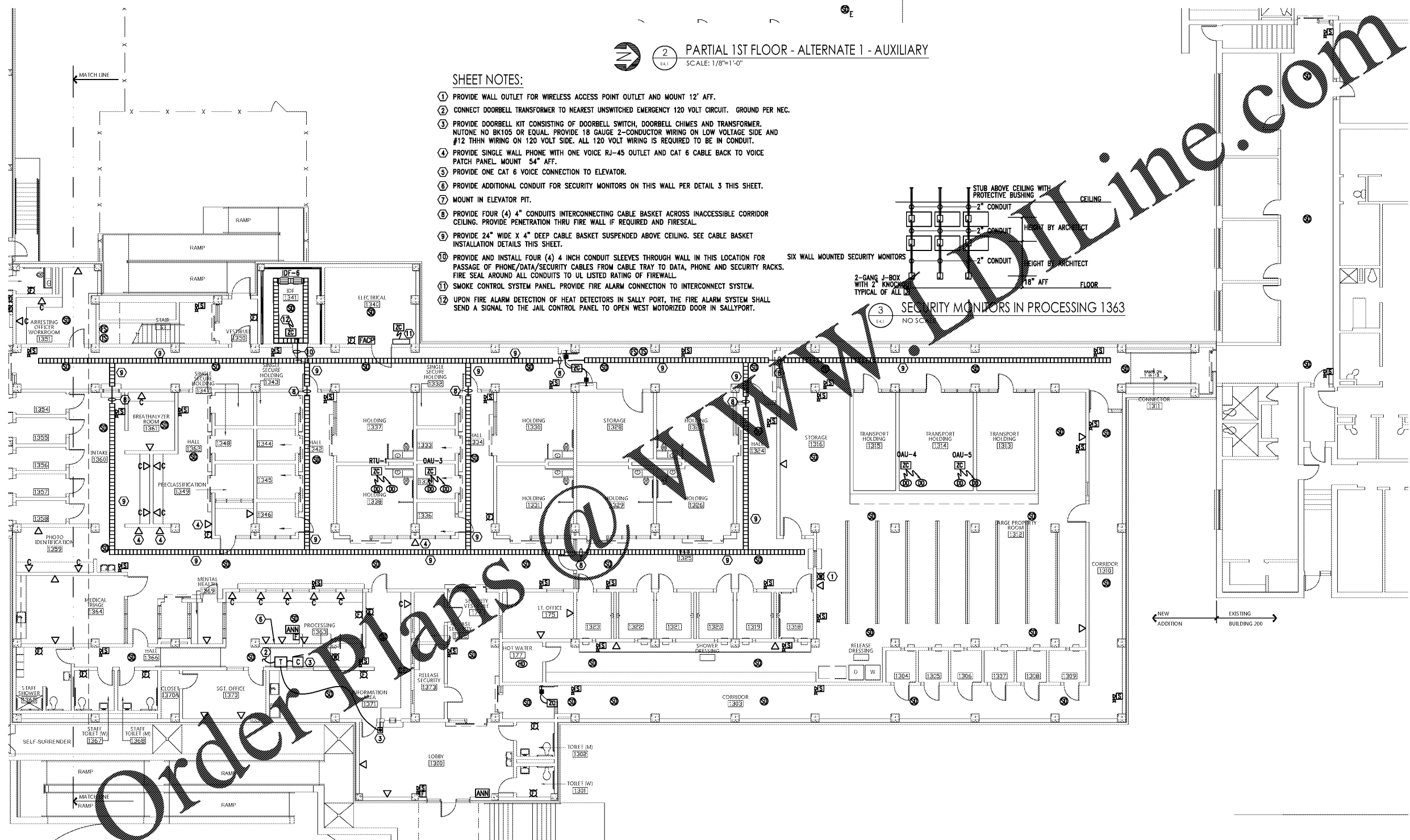
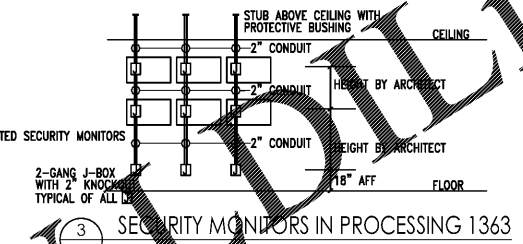
1. COORDINATE WITH CORRESPONDING RISER DIAGRAMS ON SHEETS E7.0 & E7.1.
2. COORDINATE AND MOUNT COMMUNICATIONS OUTLETS WITHIN 6" OF CORRESPONDING POWER RECEPTACLE.
3. PROVIDE A GREEN DOT STICKER ON THE CEILING GRID UNDER EACH WIRELESS ACCESS POINT LOCATION TO SHOW LOCATION TO THE IT STAFF. PROVIDE AT LEAST 15' OF COILED CAT6 SLACK AT EACH WIRELESS ACCESS POINT.



2 PARTIAL 1ST FLOOR - ALTERNATE 1 - AUXILIARY  
SCALE: 1/8"=1'-0"

SHEET NOTES:

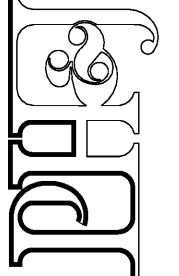
- 1 PROVIDE WALL OUTLET FOR WIRELESS ACCESS POINT OUTLET AND MOUNT 12' AFF.
- 2 CONNECT DOORBELL TRANSFORMER TO NEAREST UNSWITCHED EMERGENCY 120 VOLT CIRCUIT. GROUND PER NEC.
- 3 PROVIDE DOORBELL KIT CONSISTING OF DOORBELL SWITCH, DOORBELL CHIMES AND TRANSFORMER. NUTONE NO BK105 OR EQUAL. PROVIDE 18 GAUGE 2-CONDUCTOR WIRING ON LOW VOLTAGE SIDE AND #12 THHN WIRING ON 120 VOLT SIDE. ALL 120 VOLT WIRING IS REQUIRED TO BE IN CONDUIT.
- 4 PROVIDE SINGLE WALL PHONE WITH ONE VOICE RJ-45 OUTLET AND CAT 6 CABLE BACK TO VOICE PATCH PANEL. MOUNT 54" AFF.
- 5 PROVIDE ONE CAT 6 VOICE CONNECTION TO ELEVATOR.
- 6 PROVIDE ADDITIONAL CONDUIT FOR SECURITY MONITORS ON THIS WALL PER DETAIL 3 THIS SHEET.
- 7 MOUNT IN ELEVATOR PIT.
- 8 PROVIDE FOUR (4) 4" CONDUITS INTERCONNECTING CABLE BASKET ACROSS INACCESSIBLE CORRIDOR CEILING. PROVIDE PENETRATION THRU FIRE WALL IF REQUIRED AND FIRESEAL.
- 9 PROVIDE 24" WIDE X 4" DEEP CABLE BASKET SUSPENDED ABOVE CEILING. SEE CABLE BASKET INSTALLATION DETAILS THIS SHEET.
- 10 PROVIDE AND INSTALL FOUR (4) 4 INCH CONDUIT SLEEVES THROUGH WALL IN THIS LOCATION FOR PASSAGE OF PHONE/DATA/SECURITY CABLES FROM CABLE TRAY TO DATA, PHONE AND SECURITY RACKS. FIRE SEAL AROUND ALL CONDUITS TO UL LISTED RATING OF FIREWALL.
- 11 SMOKE CONTROL SYSTEM PANEL. PROVIDE FIRE ALARM CONNECTION TO INTERCONNECT SYSTEM.
- 12 UPON FIRE ALARM DETECTION OF HEAT DETECTORS IN SALLY PORT, THE FIRE ALARM SYSTEM SHALL SEND A SIGNAL TO THE JAIL CONTROL PANEL TO OPEN WEST MOTORIZED DOOR IN SALLYPORT.



1 1ST FLOOR PLAN - BASE BID - AUXILIARY  
SCALE: 1/8"=1'-0"

NOTE:  
ALL CONDUITS/CIRCUITRY SHALL BE CONCEALED IN THE CONCRETE SLABS, BEHIND WALLS, OR IN CHASES.

architects inc.  
Montgomery, Alabama

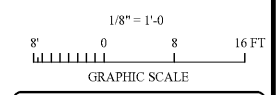


CIP-2017-001  
UPGRADES TO THE MOBILE COUNTY METRO JAIL  
For The MOBILE COUNTY COMMISSION  
MOBILE, ALABAMA



DRAWN: J.C.T.	CHECK: K.A.G.
DATE: April 2, 2019 RTA	
REVISED:	
REVISED:	

SHEET TITLE	
SALLY PORT - 1ST FLOOR PLAN - BASE BID - AUXILIARY	
COR NO.	PH&J 1801-GV
SEQUENCE NO.	154 OF 175



Gunn & Associates, P.C.  
Consulting Engineers  
3102 Highway 14  
Montgomery, AL 36104  
500 Southland Drive Suite 250  
Hoover, AL 35226  
Tel: 334.285.1273  
GAP18-192

E4.1

© PH&J ARCHITECTS, INC.  
ALL RIGHTS RESERVED