

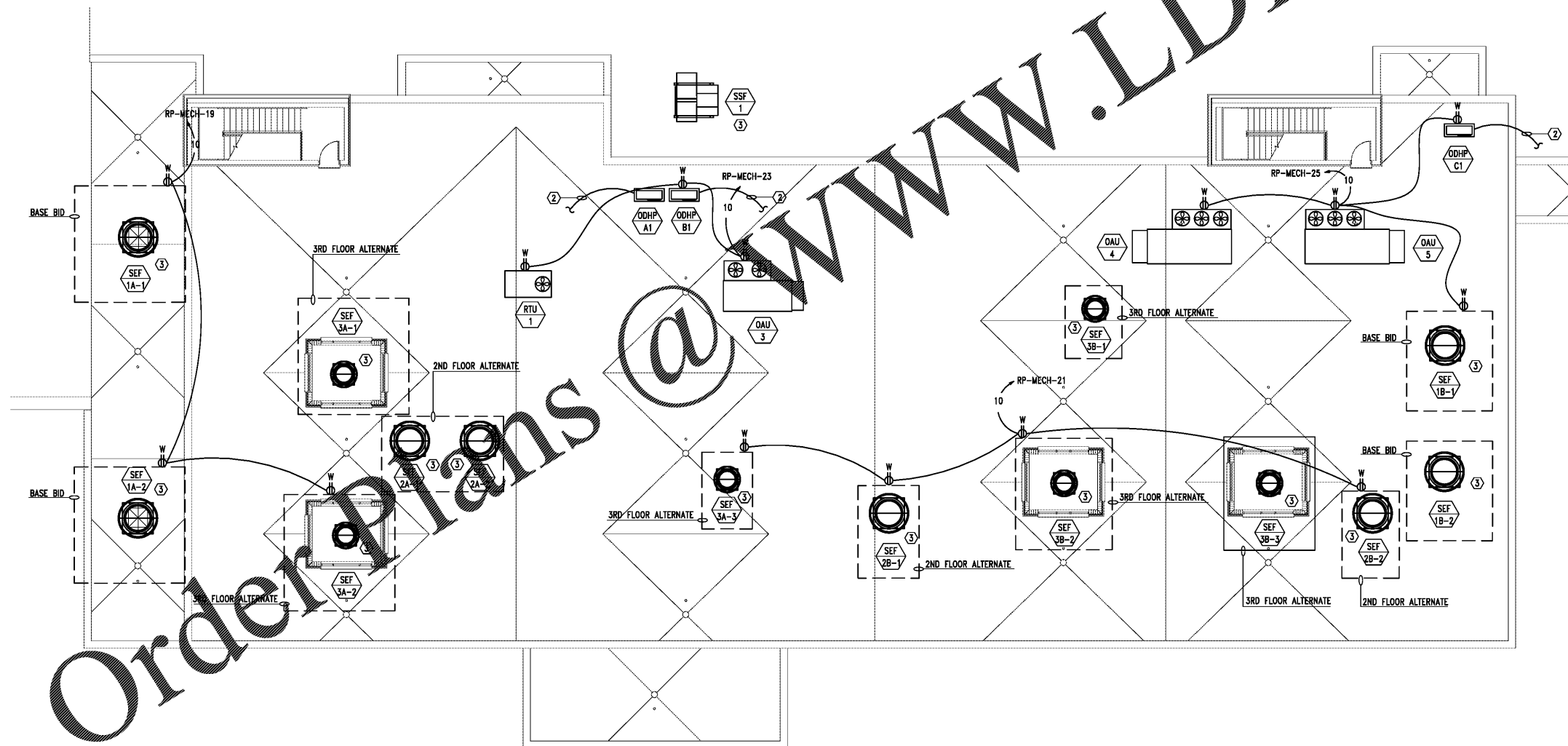
NOTE:
ALL CONDUITS/CIRCUITRY SHALL BE CONCEALED IN THE CONCRETE SLABS. BEHIND WALLS, OR IN CHASES.

GENERAL NOTES:

- COORDINATE WITH MECHANICAL/PLUMBING DRAWINGS FOR EXACT LOCATIONS OF EQUIPMENT.
- MOUNT EXTERIOR DISCONNECTS ON EXTERIOR WALLS AT LEAST 18" FROM WINDOWS. LOCATIONS OF DISCONNECTS AND EQUIPMENT ARE SHOWN FOR DRAWING CLARITY PURPOSES ONLY.
- COORDINATE WITH MECHANICAL/PLUMBING CONTRACTORS TO INSURE OVERCURRENT PROTECTION DEVICES FOR THEIR EQUIPMENT IS SIZED PER MANUFACTURER'S RECOMMENDATIONS. ENGINEER SIZED OVERCURRENT PROTECTION ACCORDING TO MECHANICAL/PLUMBING DRAWINGS AND SPECIFICATIONS. ACTUAL EQUIPMENT SUPPLIED MAY DIFFER. ELECTRICAL CONTRACTOR SHALL WORK WITH OTHER TRADE DISCIPLINES TO INSURE ANY CHANGES WILL BE INSTALLED CORRECTLY AT THE COST OF THE PERSON MAKING THE CHANGES.
- ALL FLEXIBLE CONNECT TO HVAC UNITS SHALL BE RUN PARALLEL TO HARD SURFACE AND STRAPPED AT LEAST EVERY 2'.
- CONTRACTOR SHALL PROVIDE CONDUIT FOR MECHANICAL CONTROLS. COORDINATE EXACT LOCATIONS WITH MECHANICAL CONTRACTOR PRIOR TO ROUGH-IN.
- ALL DISCONNECTS TO HAVE NAMEPLATE AS SHOWN IN DETAIL (3) SHEET E3.4, NO EXCEPTIONS.
- PROVIDE DEDICATED NEUTRALS FOR EACH MULTIWIRE HOMERUN PER NEC.
- COORDINATE WITH GENERAL EQUIPMENT SCHEDULES ON SHEET E3.8 FOR CIRCUITRY OF ALL EQUIPMENT TAGGED ON THIS SHEET.
- SEE DETAIL (1) SHEET E3.8 FOR MECHANICAL UNIT CONNECTION DETAIL.
- PROVIDE DEDICATED NEUTRALS FOR EACH MULTIWIRE HOMERUN PER NEC.
- ALL ELECTRICAL ROOF PENETRATIONS SHALL BE THRU THE MECHANICAL ROOF CURBS. DO NOT PENETRATE ROOF ANYWHERE ELSE.

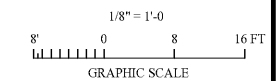
SHEET NOTE:

- MOUNT RECEPTACLES BESIDE ROOF TOP UNIT. PROVIDE UNISTRUT AS NEEDED.
- PROVIDE INTERCONNECTING RELAY TO CONTROL 120V EXHAUST FAN ON/OFF BY THE 277 VOLT LIGHTING CIRCUIT IN THIS ROOM.
- PROVIDE 3/4" CONDUIT FOR CONTROLS FROM SMOKE EVAC FAN TO THE SMOKE CONTROL SYSTEM PANEL IN ELECTRICAL ROOM 1340.



Order Plans @

1 ROOF FLOOR PLAN - MECHANICAL POWER
SCALE: 1/8"=1'-0"



Gunn & Associates, P.C.
 Consulting Engineers
 3102 Highway 14
 Millbrook, AL 36054
 500 Southland Drive Suite 250
 Hoover, AL 35226
 Tel: 334.285.1273
 GAI18-192

CIP-2017-001
 UPGRADES TO THE MOBILE COUNTY METRO JAIL
 FOR THE MOBILE COUNTY COMMISSION
 MOBILE, ALABAMA



DRAWN	J.C.T.	CHECK	K.A.G.
DATE	April 2, 2019 RTA		
REVISED			
REVISED			

SHEET TITLE
 ROOF FLOOR PLAN -
 MECHANICAL POWER

COS NO.
 PH&J 1801-GV

SEQUENCE
 NO. 151 OF 175

E3.7
 © PH&J ARCHITECTS, INC.
 ALL RIGHTS RESERVED

architects inc.
 Montgomery, Alabama