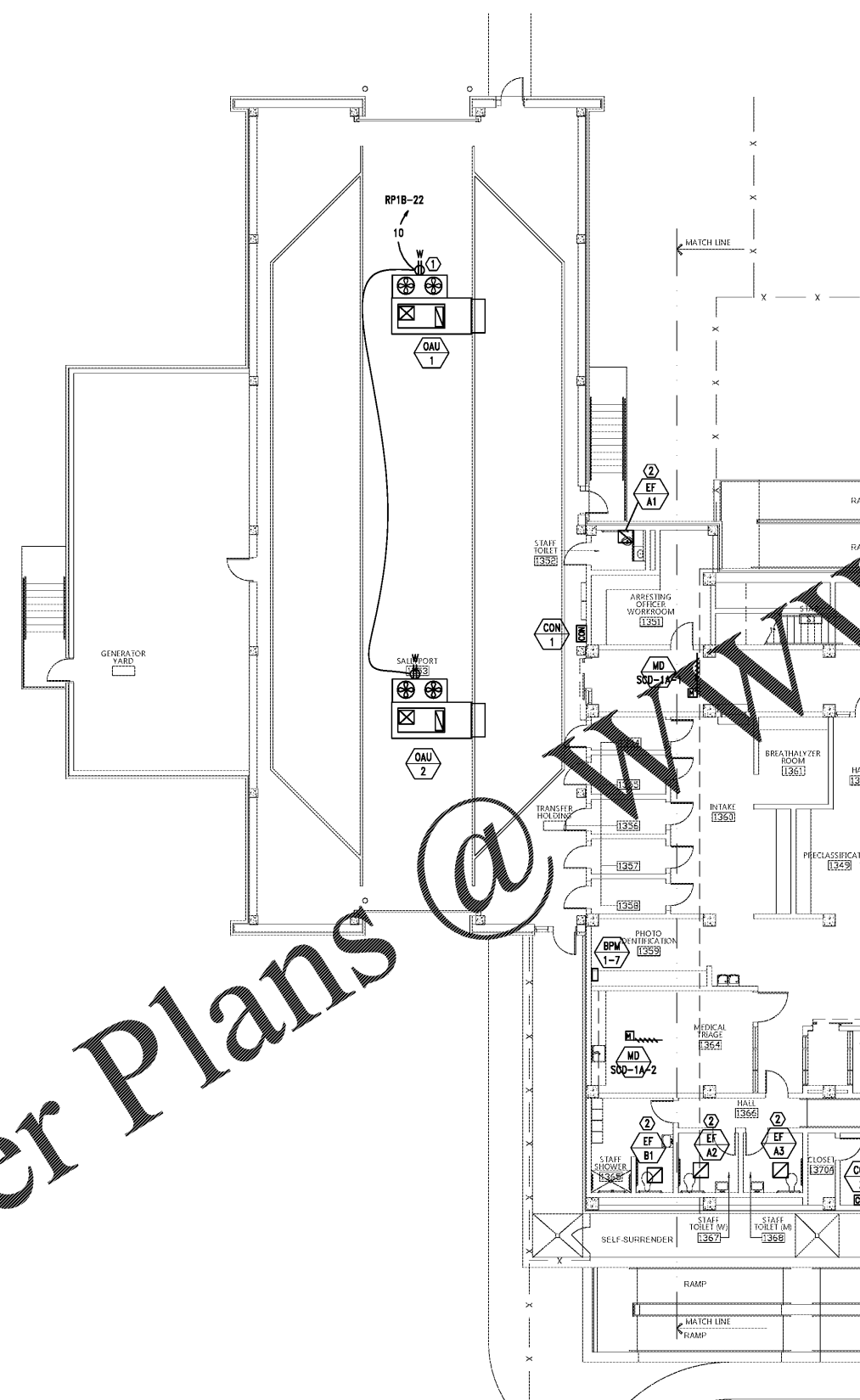
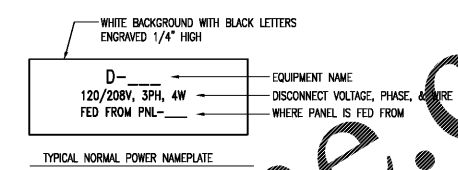


Order Plans @



NOTE:  
ALL CONDUITS/CIRCUITRY SHALL BE CONCEALED IN THE CONCRETE SLABS. BEHIND WALLS, OR IN CHASES.



3  
E3.1  
DETAIL - TYPICAL DISCONNECT NAMEPLATE  
NO SCALE

SHEET NOTE:

- 1. MOUNT RECEPTACLES BESIDE ROOF TOP UNIT. PROVIDE UNISTRUT AS NEEDED.
- 2. PROVIDE INTERCONNECTING RELAY TO CONTROL 120V EXHAUST FAN ON/OFF BY THE 277 VOLT LIGHTING CIRCUIT IN THIS ROOM.

GENERAL NOTES:

- 1. COORDINATE WITH MECHANICAL/PLUMBING DRAWINGS FOR EXACT LOCATIONS OF EQUIPMENT.
- 2. MOUNT EXTERIOR DISCONNECTS ON EXTERIOR WALLS AT LEAST 18" FROM WINDOWS. LOCATIONS OF DISCONNECTS AND EQUIPMENT ARE SHOWN FOR DRAWING CLARITY PURPOSES ONLY.
- 3. COORDINATE WITH MECHANICAL/PLUMBING CONTRACTORS TO INSURE OVERCURRENT PROTECTION DEVICES FOR THEIR EQUIPMENT IS SIZED PER MANUFACTURER'S RECOMMENDATIONS. ENGINEER SIZED OVERCURRENT PROTECTION ACCORDING TO MECHANICAL/PLUMBING DRAWINGS AND SPECIFICATIONS. ACTUAL EQUIPMENT SUPPLIED MAY DIFFER. ELECTRICAL CONTRACTOR SHALL WORK WITH OTHER TRADE DISCIPLINES TO INSURE ANY CHANGES WILL BE INSTALLED CORRECTLY AT THE COST OF THE PERSON MAKING THE CHANGES.
- 4. ALL FLEXIBLE CONNECT TO HVAC UNITS SHALL BE RUN PARALLEL TO HARD SURFACE AND STRAPPED AT LEAST EVERY 2'.
- 5. CONTRACTOR SHALL PROVIDE CONDUIT FOR MECHANICAL CONTROLS. COORDINATE EXACT LOCATIONS WITH MECHANICAL CONTRACTOR PRIOR TO ROUGH-IN.
- 6. ALL DISCONNECTS TO HAVE NAMEPLATE AS SHOWN IN DETAIL (3) SHEET E3.4, NO EXCEPTIONS.
- 7. PROVIDE DEDICATED NEUTRALS FOR EACH MULTIWIRE HOMERUN PER NEC.
- 8. COORDINATE WITH GENERAL EQUIPMENT SCHEDULES ON SHEET E3.8 FOR CIRCUITRY OF ALL EQUIPMENT TAGGED ON THIS SHEET.
- 9. SEE DETAIL (1) SHEET E3.8 FOR MECHANICAL UNIT CONNECTION DETAIL.
- 10. PROVIDE DEDICATED NEUTRALS FOR EACH MULTIWIRE HOMERUN PER NEC.

architects inc.  
Montgomery, Alabama

CIP-2017-001  
UPGRADES TO THE MOBILE COUNTY METRO JAIL  
For The MOBILE COUNTY COMMISSION  
MOBILE, ALABAMA



DRAWN	J.C.T.	CHECK	K.A.G.
DATE	April 2, 2019 RTA		
REVISED			
REVISED			

SHEET TITLE	
SALLY PORT - 1ST FLOOR	
PLAN - BASE BID -	
MECHANICAL POWER	
COS NO.	PH&J 1801-GV
SEQUENCE NO.	148 of 175

E3.4

© PH&J ARCHITECTS, INC.  
ALL RIGHTS RESERVED

SALLY PORT  
1ST FLOOR PLAN - BASE BID - MECHANICAL POWER  
SCALE: 1/8"=1'-0"

1/8" = 1'-0"

8' 0 8 16 FT

GRAPHIC SCALE

**GA** Gunn & Associates, P.C.  
Consulting Engineers

3102 Highway 14  
Montgomery, AL 36104  
Tel: 334.285.1273

500 Southland Drive Suite 210  
Hoover, AL 35226  
GAM18-192