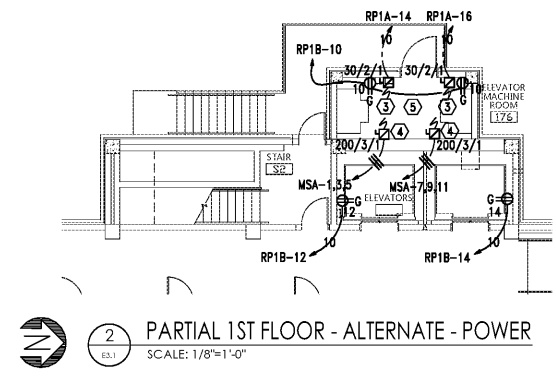
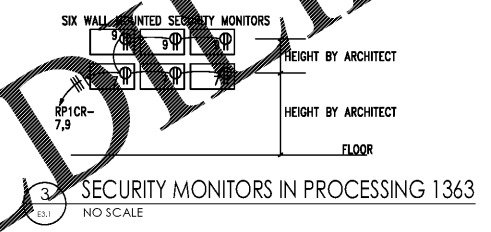
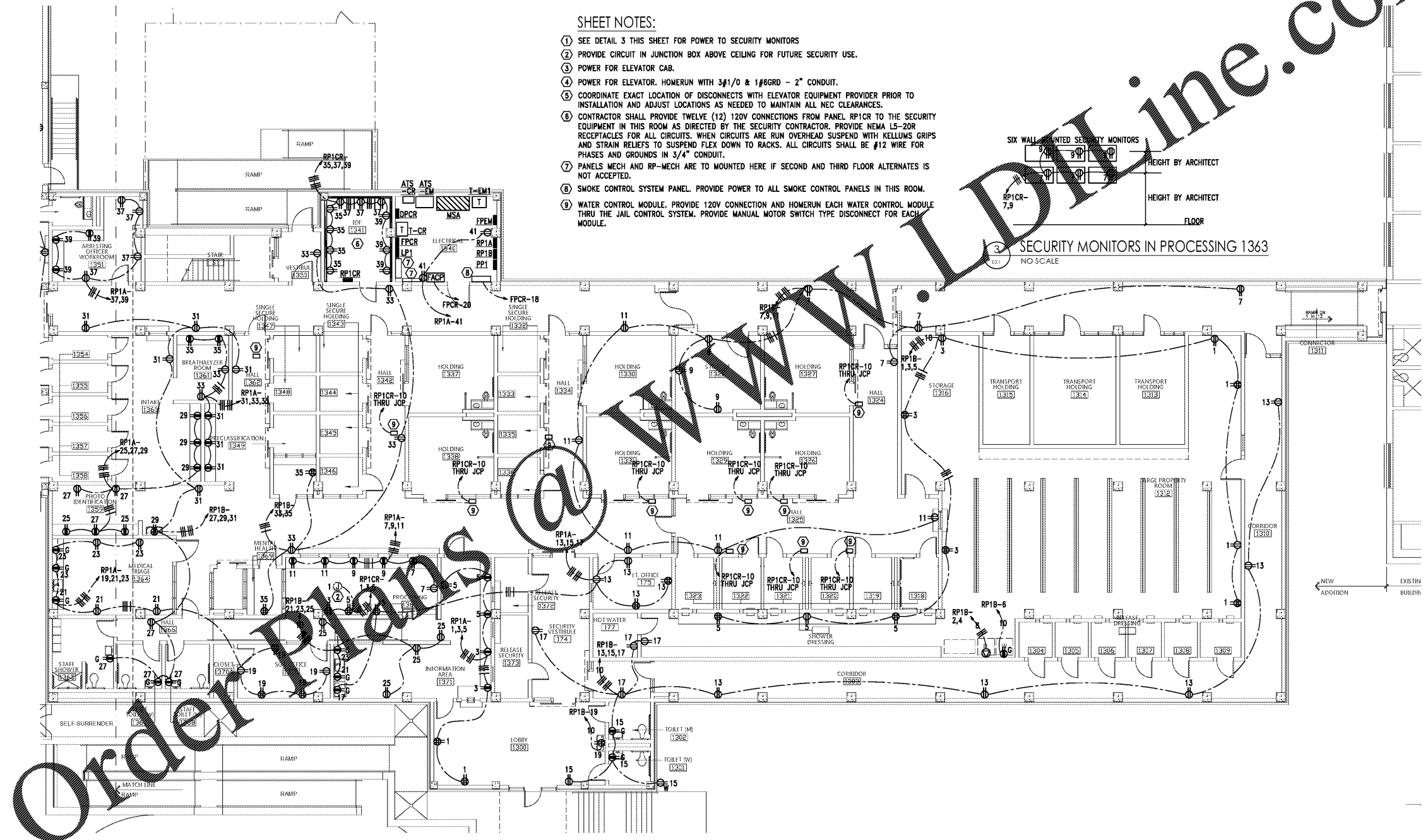


NOTE:
ALL CONDUITS/CIRCUITRY SHALL BE
CONCEALED IN THE CONCRETE SLABS.
BEHIND WALLS, OR IN CHASES.

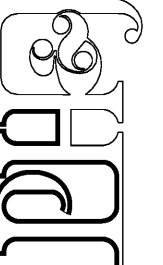


- SHEET NOTES:
- SEE DETAIL 3 THIS SHEET FOR POWER TO SECURITY MONITORS
 - PROVIDE CIRCUIT IN JUNCTION BOX ABOVE CEILING FOR FUTURE SECURITY USE.
 - POWER FOR ELEVATOR CAB.
 - POWER FOR ELEVATOR. HOMERUN WITH 3#1/0 & 1#6GRD - 2" CONDUIT.
 - COORDINATE EXACT LOCATION OF DISCONNECTS WITH ELEVATOR EQUIPMENT PROVIDER PRIOR TO INSTALLATION AND ADJUST LOCATIONS AS NEEDED TO MAINTAIN ALL NEC CLEARANCES.
 - CONTRACTOR SHALL PROVIDE TWELVE (12) 120V CONNECTIONS FROM PANEL RP1CR TO THE SECURITY EQUIPMENT IN THIS ROOM AS DIRECTED BY THE SECURITY CONTRACTOR. PROVIDE NEMA L5-20R RECEPTACLES FOR ALL CIRCUITS. WHEN CIRCUITS ARE RUN OVERHEAD SUSPEND WITH KELLUMS GRIPS AND STRAIN RELIEFS TO SUSPEND FLEX DOWN TO RACKS. ALL CIRCUITS SHALL BE #12 WIRE FOR PHASES AND GROUNDS IN 3/4" CONDUIT.
 - PANELS MECH AND RP-MECH ARE TO MOUNTED HERE IF SECOND AND THIRD FLOOR ALTERNATES IS NOT ACCEPTED.
 - SMOKE CONTROL SYSTEM PANEL. PROVIDE POWER TO ALL SMOKE CONTROL PANELS IN THIS ROOM.
 - WATER CONTROL MODULE. PROVIDE 120V CONNECTION AND HOMERUN EACH WATER CONTROL MODULE THRU THE JAIL CONTROL SYSTEM. PROVIDE MANUAL MOTOR SWITCH TYPE DISCONNECT FOR EACH MODULE.



Order Plans @ WWW.DLINE.COM

architects inc.
Montgomery, Alabama



CIP-2017-001
UPGRADES TO THE MOBILE COUNTY METRO JAIL
FOR THE MOBILE COUNTY COMMISSION
MOBILE, ALABAMA



| | | | |
|---------|-------------------|-------|--------|
| DRAWN | J.C.T. | CHECK | K.A.G. |
| DATE | April 2, 2019 RTA | | |
| REVISED | | | |
| REVISED | | | |

SHEET TITLE
SALLY PORT - 1ST FLOOR
PLAN - BASE BID -
POWER

COR NO.
PH&J 1801-GV

SEQUENCE
NO. 145 OF 175

E3.1
© PH&J ARCHITECTS, INC.
ALL RIGHTS RESERVED

1/8" = 1'-0"
8" 0 8 16 FT
GRAPHIC SCALE

GA Gunn & Associates, P.C.
Consulting Engineers
3102 Highway 14
Millbrook, AL 36054
Tel: 334.285.1273

500 Southland Drive Suite 210
Hoover, AL 35226
GAP18-192