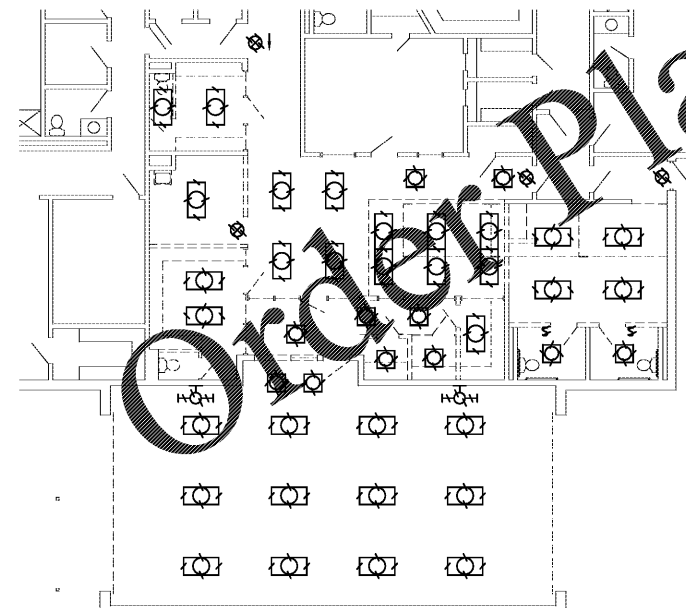


1 PARTIAL DEMOLITION PLAN (ADMINISTRATION) - POWER & AUXILIARY
SCALE: 1/8"=1'-0"

GENERAL NOTES:

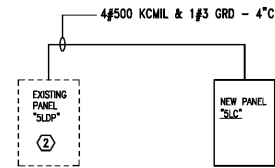
1. ALL LIGHTS SHOWN HATCHED SHOULD BE REMOVED. EXISTING CIRCUITRY SHALL REMAIN FOR RECONNECTION OF NEW LIGHT FIXTURES.
2. CONTRACTOR RESPONSIBLE FOR INTERCEPTING AND REROUTING ALL EXISTING CIRCUITRY AS REQUIRED TO ACCOMPLISH DEMO AND NEW WORK. VISIT SITE PRIOR TO BIDS TO QUANTIFY THE AMOUNT OF WORK.
3. CONTRACTOR RESPONSIBLE FOR REMOVING AND REINSTALLING ALL CEILING MOUNTED DEVICES IN ALL CEILINGS THAT ARE TO BE REMOVED AND REPLACED. VISIT SITE PRIOR TO BIDS TO QUANTIFY THE AMOUNT OF WORK AND BID ACCORDINGLY.
4. REMOVE ALL SWITCHING AS REQUIRED TO ACCOMPLISH NEW SWITCHING REQUIREMENTS. SEE LIGHTING PLANS FOR NEW SWITCH REQUIREMENTS FOR EACH SPACE.
5. PROVIDE DEDICATED NEUTRALS FOR EACH MULTIWIRED HOMERUN PER NEC.
6. ALL NEW COMMUNICATIONS CABLING SHALL RUN TO THE MDF OR NEAREST COMM CLOSET. PROVIDE CAT 6 PATCH PANELS IN EXISTING RACKS TO TERMINATE CABLING.
7. COORDINATE WITH ARCHITECTURAL AND REMOVE ALL ELECTRICAL FROM WALLS TO BE REMOVED. INTERCEPT AND EXTEND CIRCUITRY AS REQUIRED TO MAINTAIN CIRCUITRY TO EXISTING DEVICES TO REMAIN. VISIT SITE PRIOR TO BIDS TO QUANTIFY THE AMOUNT OF WORK.
8. EXISTING CEILING MOUNTED SPEAKERS SHALL BE REMOVED FROM CEILING TO BE REMOVED AND REINSTALL IN PUBLIC AREAS ONCE NEW CEILINGS ARE INSTALLED. INTERCEPT AND EXTEND CIRCUITRY AS NEEDED.



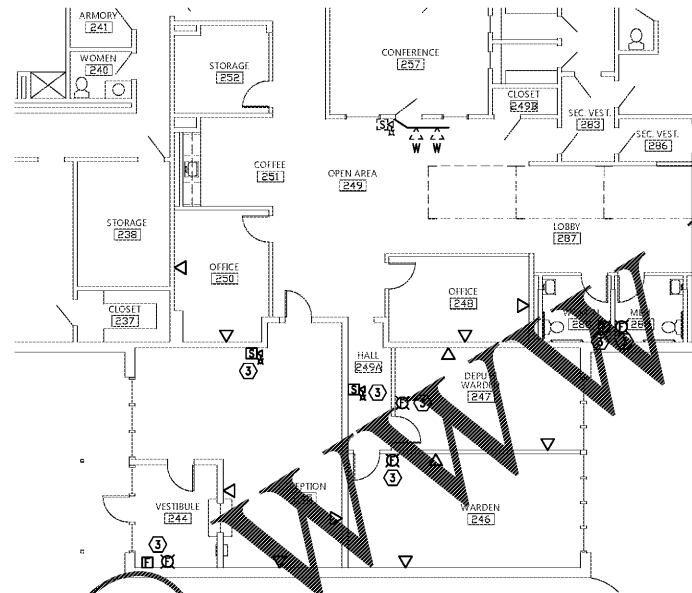
2 PARTIAL DEMOLITION PLAN (ADMINISTRATION) - LIGHTING
SCALE: 1/8"=1'-0"

POWER RISER DIAGRAM NOTES:

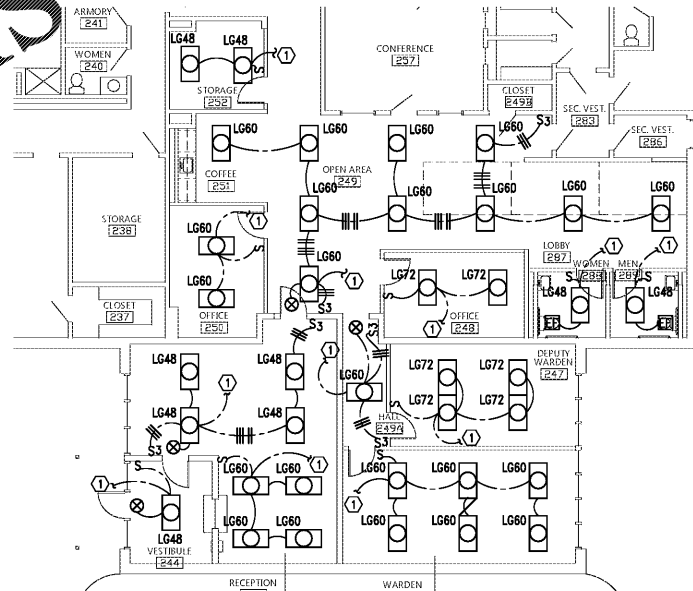
1. INSTALLATION AND CONNECTION OF ALL DEVICES SHALL BE IN ACCORDANCE WITH NEC, MANUFACTURER'S RECOMMENDATIONS, AND STATE AND LOCAL CODES.
2. CONTRACTOR IS RESPONSIBLE FOR THE CONNECTING, INSTALLATION, AND MARKING OF ALL POWER FEEDER CONDUCTORS FOR THE PROPER PHASE SEQUENCE AND LOADING. CONTRACTOR SHALL TEST EACH FEEDER AND EQUIPMENT FEEDERS WITH A PHASE METER PRIOR TO CONNECTING LOADS.
3. THE CONTRACTOR IS RESPONSIBLE FOR COORDINATING AND VERIFYING WITH ALL DIVISIONS THE ACTUAL NAMEPLATE DATA OF ALL EQUIPMENT AND DEVICES SUPPLIED ON THIS PROJECT PRIOR TO BID. CONTRACTOR SHALL THEN PROVIDE THE PROPERLY SIZED OVERCURRENT DEVICES (CIRCUIT BREAKERS, CONDUCTORS, DISCONNECTS, FUSES, ETC.) TO PROPERLY PROTECT THE EQUIPMENT PER THE NEC. ENGINEER'S DESIGN BASED ON DATA GIVEN TO HIM BY DESIGNERS OF OTHER DIVISIONS, ACTUAL NAMEPLATE DATA COULD DIFFER.
4. SEAL ALL CONDUITS FROM THE EXTERIOR WITH A SEALING COMPOUND, ONCE ALL CABLING HAS BEEN INSTALLED.



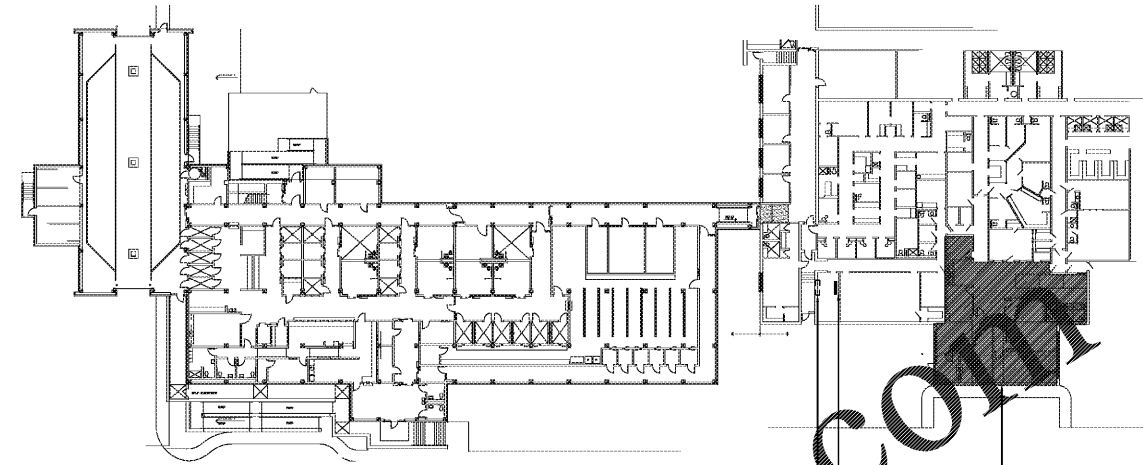
4 PARTIAL POWER RISER DIAGRAM
NO SCALE



5 SECOND FLOOR NEW PLAN (ADMINISTRATION) - AUXILIARY
SCALE: 1/8"=1'-0"



3 PARTIAL NEW PLAN (ADMINISTRATION) - LIGHTING
SCALE: 1/8"=1'-0"

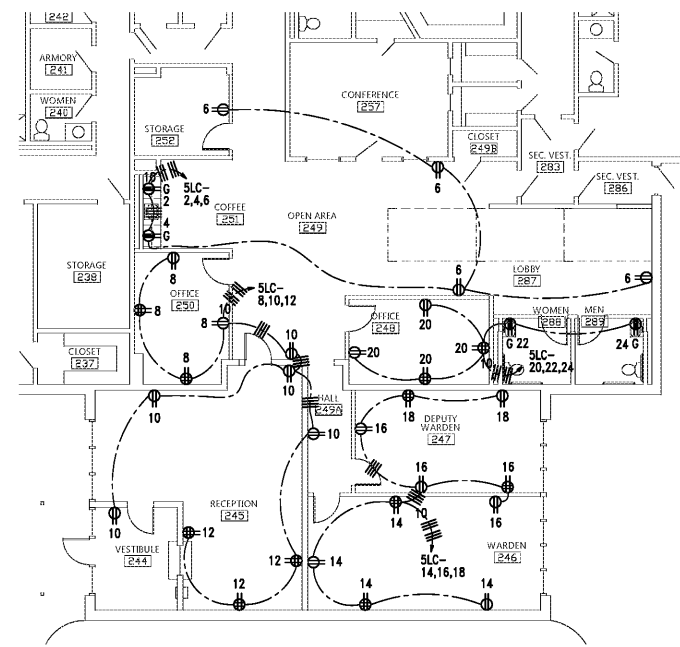


KEY PLAN
NO SCALE

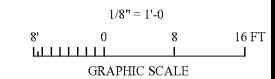
APPROXIMATE LOCATION OF EXISTING PANEL "SLDP"
LOCATION OF NEW PANEL "SLC"

SHEET NOTES:

1. CONTRACTOR SHALL CONNECT NEW LIGHTS TO EXISTING EMERGENCY CIRCUIT PREVIOUSLY SERVING THIS AREA AS REQUIRED.
2. CONTRACTOR SHALL PROVIDE (1) ONE NEW 125A/3P (22K AIC) CIRCUIT BREAKER IN EXISTING PANEL "SLDP".
3. CONTRACTOR SHALL CONNECT NEW FIRE ALARM DEVICES TO EXISTING SIMPLEX FIRE ALARM CONTROL PANEL PREVIOUSLY SERVING THIS AREA. CONTRACTOR SHALL EXPAND EXISTING FIRE ALARM SYSTEM AS REQUIRED TO ACCOMMODATE NEW DEVICES. CONTRACTOR SHALL ALSO RE-TEST AND RE-CERTIFY EXISTING FIRE ALARM SYSTEM ONCE NEW WORK IS COMPLETE.
4. REMOVE FIRE ALARM DEVICE AND MAINTAIN CIRCUITRY TO EXISTING DEVICES TO REMAIN. TURN OVER DEVICE TO OWNER FOR STOCK.
5. REMOVE SECURITY CAMERA AND TURN OVER DEVICE TO OWNER FOR STOCK.



4 PARTIAL NEW PLAN (ADMINISTRATION) - POWER
SCALE: 1/8"=1'-0"



Gunn & Associates, P.C.
Consulting Engineers
3102 Highway 14
Birmingham, AL 35264
500 Southland Drive Suite 250
Hoover, AL 35226
Tel: 334.285.1273
GAP18-192

CIP-2017-001
UPGRADES TO THE MOBILE COUNTY METRO JAIL
FOR THE MOBILE COUNTY COMMISSION
MOBILE, ALABAMA



DRAWN: J.C.T.	CHECK: K.A.G.
DATE: April 2, 2019 RTA	
REVISED:	
REVISED:	

SHEET TITLE: PARTIAL ADMINISTRATION PLANS ELECTRICAL
COR NO: PH&J 1801-GV
SEQUENCE NO. 143 OF 175

E2.4

© PH&J ARCHITECTS, INC.
ALL RIGHTS RESERVED

architects inc.
Montgomery, Alabama