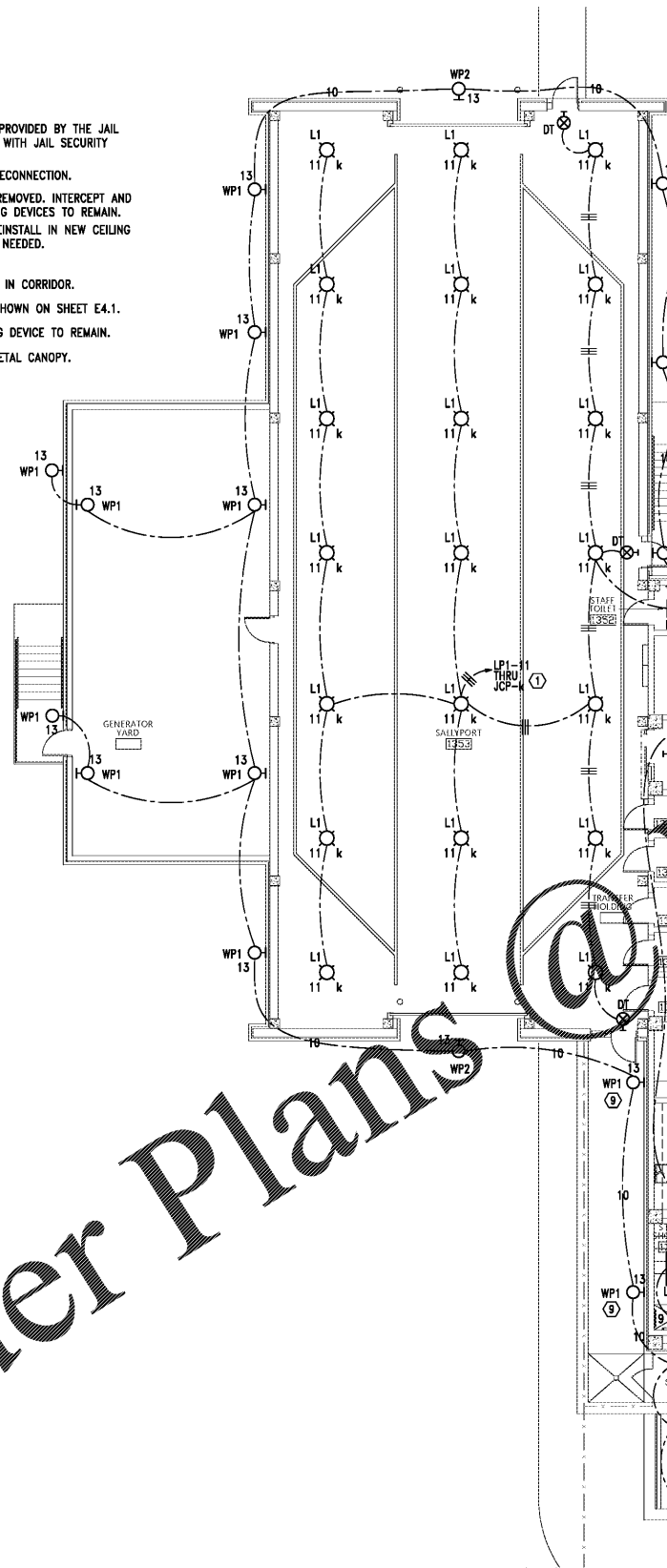


NOTE:
ALL CONDUITS/CIRCUITRY SHALL BE
CONCEALED IN THE CONCRETE SLABS.
BEHIND WALLS, OR IN CHASES.

SHEET NOTES:

- ① ROUTE LIGHTS THRU RELAYS IN THE JAIL CONTROL PANEL BEING PROVIDED BY THE JAIL SECURITY CONTRACTOR. COORDINATE ROUTING AND REQUIREMENTS WITH JAIL SECURITY CONTRACTOR.
- ② REMOVE ALL LIGHTS FROM THIS AREA. MAINTAIN CIRCUITRY FOR RECONNECTION.
- ③ REMOVE ALL POWER AND AUXILIARY DEVICES FROM WALL TO BE REMOVED. INTERCEPT AND EXTEND CIRCUITRY AS NEEDED TO MAINTAIN CIRCUITRY TO EXISTING DEVICES TO REMAIN.
- ④ REMOVE AUXILIARY DEVICE FROM CEILING TO BE REMOVED AND REINSTALL IN NEW CEILING ONCE INSTALLED. INTERCEPT AND EXTEND EXISTING CIRCUITRY AS NEEDED.
- ⑤ REMOVE AIPHONE SYSTEM FROM WALL TO BE REMOVED.
- ⑥ RELOCATE WIRELESS ACCESS POINT TO NEAREST WALL TO REMAIN IN CORRIDOR.
- ⑦ RELOCATE FIRE ALARM DEVICE TO ONE OF THE NEW LOCATIONS SHOWN ON SHEET E4.1.
- ⑧ REMOVE FIRE ALARM DEVICE AND MAINTAIN CIRCUITRY TO EXISTING DEVICE TO REMAIN.
- ⑨ MOUNT TOP OF LIGHT FIXTURE 2" BELOW THE BOTTOM OF THE METAL CANOPY.



② PARTIAL BUILDING 200 DEMOLITION PLAN - LIGHTING
SCALE: 1/8"=1'-0"

③ PARTIAL BUILDING 200 DEMOLITION PLAN - POWER & AUXILIARY
SCALE: 1/8"=1'-0"

SALLY PORT
① 1ST FLOOR PLAN - BASE BID - LIGHTING
SCALE: 1/8"=1'-0"

1/8" = 1'-0"
8" 0 8 16 FT
GRAPHIC SCALE

GA Gunn & Associates, P.C.
Consulting Engineers
3102 Highway 14
Montgomery, AL 36104
Tel: 334.285.1273

500 Southland Drive Suite 250
Hoover, AL 35226
GAP18-192

CIP-2017-001
UPGRADES TO THE MOBILE COUNTY METRO JAIL
For The MOBILE COUNTY COMMISSION
MOBILE, ALABAMA

ALABAMA REGISTERED PROFESSIONAL ENGINEER
PHILIP RAY DUNN, JR.
04-02-19

| | |
|-------------------------|---------------|
| DRAWN: J.C.T. | CHECK: K.A.G. |
| DATE: April 2, 2019 RTA | |
| REVISED: | |
| REVISED: | |

SHEET TITLE
SALLY PORT - 1ST FLOOR
PLAN - BASE BID -
LIGHTING

CIP NO.
PH&J 1801-GV

SEQUENCE
NO. 139 OF 175

E2.0

© PH&J ARCHITECTS, INC.
ALL RIGHTS RESERVED

architects inc.
Montgomery, Alabama