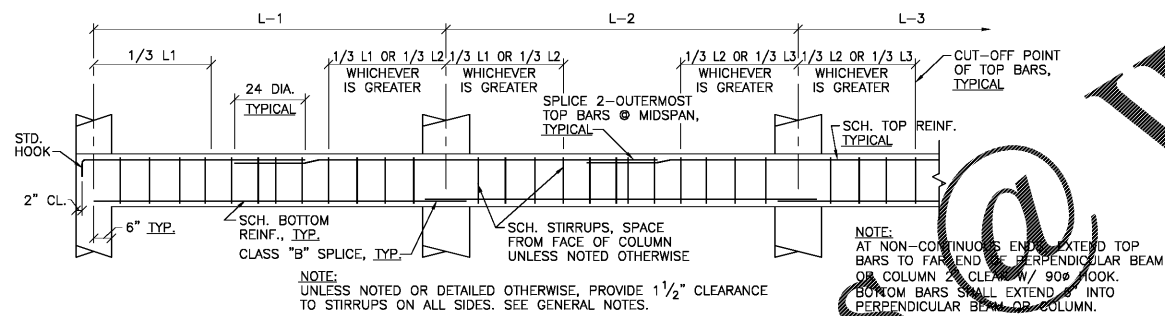
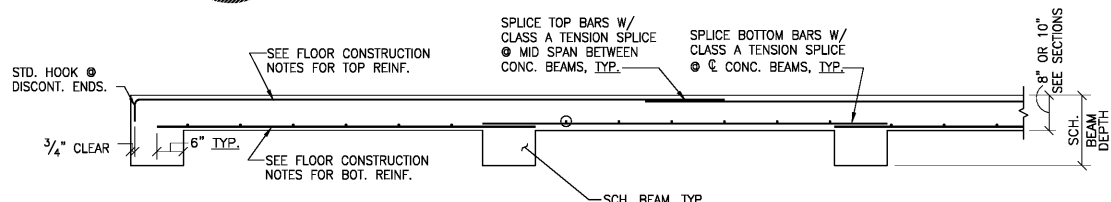
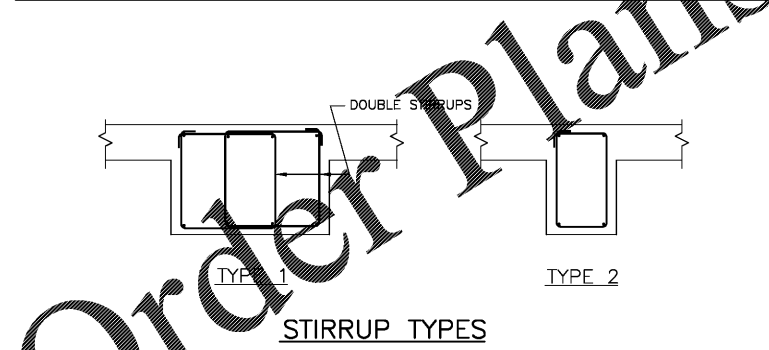


TYPICAL GRADE BEAM STEP DETAIL

CONCRETE GRADE BEAM SCHEDULE										
MARK	L	S	REINFORCING			STIRRUPS		NOTES		
			TOP BARS LEFT END	BOTTOM BARS	TOP BARS RIGHT END	SIZE	TYPE		SPACING EACH END (IN INCHES)	
GB-1	18	24	3-#9	3-#8	3-#9	#4	2	2@4, R@8		
GB-2	18	24		3-#8	3-#9	#4	2	2@4, R@8		
GB-3	18	24	3-#8	3-#7	3-#8	#4	2	2@4, R@8		
GB-4	18	24		3-#7	3-#8	#4	2	2@4, R@8		
GB-5	18	24	4-#9	3-#9	4-#9	#4	2	2@3, R@6		
GB-6	18	24	4-#8	4-#9	4-#9	#4	2	2@3, R@6		
GB-7	18	24		4-#9	4-#8	#4	2	2@3, R@6		
GB-8	18	24	3-#8	3-#7	3-#8	#4	2	1@4, R@9	③	
GB-9	18	24	3-#5	3-#5	3-#5	#4	2	2@4, R@12	①	
GB-10	16	24	3-#7	3-#8	3-#9	#4	2	1@4, 12@6, R@8		
GB-11	16	24		3-#8	3-#9	#4	2	1@4, 12@6, R@8		
GB-12	16	24		3-#8	3-#9	#4	2	1@4, 12@6, R@8		
GB-13	16	24		3-#8	3-#9	#4	2	1@4, 12@6, R@8		
GB-14	16	24		3-#8	3-#9	#4	2	1@4, 12@6, R@8		



TYPICAL ELEVATED CONCRETE BEAM REINFORCING DIAGRAM

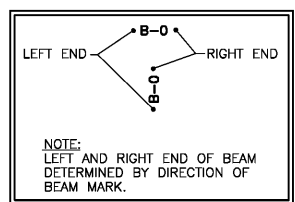


TYPICAL CONCRETE SLAB REINFORCING DIAGRAM

CONCRETE FLOOR BEAM SCHEDULE										
MARK	L	S	REINFORCING			STIRRUPS		NOTES		
			TOP BARS LEFT END	BOTTOM BARS	TOP BARS RIGHT END	SIZE	TYPE		SPACING EACH END (IN INCHES)	
B-1	20	32	4-#5	3-#7	4-#8	#4	2	2@4, 14@6, R@12		
B-2	20	32		3-#8	4-#9	#4	2	2@4, 14@6, R@12		
B-3	20	32		3-#9	4-#9	#4	2	2@4, 14@6, R@12		
B-4	20	32		3-#6	4-#5	#4	2	2@4, 14@6, R@12		
B-5	20	32		3-#6	4-#5	#4	2	2@4, 14@6, R@12		
B-6	30	32	5-#8	5-#7	5-#8	#4	1	2@4, 10@9, R@12		
B-7	30	32		5-#8	6-#9	#4	1	2@4, 10@9, R@12		
B-8	30	32		5-#9	6-#9	#4	1	2@4, 16@6, R@12		
B-9	30	32		5-#7	6-#9	#4	1	2@4, 10@9, R@12		
B-10	30	32		5-#7	5-#7	#4	1	2@4, 10@9, R@12		
B-11	20	32	4-#7	3-#7	4-#7	#4	2	2@4, 10@9, R@12		
B-12	16	32	4-#7	3-#8	4-#8	#4	2	2@6, R@8	①	
B-13	20	32		3-#8	4-#8	#4	2	2@6, R@12	①	
B-14	20	32		3-#7	4-#6	#4	2	2@6, R@12	①	
B-15	20	32	4-#5	4-#5	4-#5	#4	2	2@6, R@12	①	
B-16	20	32		4-#5	4-#5	#4	2	2@6, R@12	①	
B-17	20	32	4-#5	4-#5	4-#5	#4	2	2@6, R@12	①	
B-18	20	32		4-#5	4-#5	#4	2	2@6, R@12	①	
B-19	20	32		4-#5	4-#7	#4	2	2@6, R@12	①	
B-20	20	32		4-#8	4-#7	#4	2	2@6, R@12	①	
B-21	16	32	3-#9	3-#9	3-#9	#4	2	2@6, R@8	①	
B-22	16	32		3-#8	4-#8	#4	2	2@6, R@8	①	
B-23	12	32	3-#5	3-#5	3-#5	#4	2	2@6, R@12		
B-24	12	32	4-#7	2-#7	2-#7	#4	2	2@6, R@12		
B-25	30	32	4-#7	5-#7	5-#8	#4	1	2@4, 10@9, R@12		
B-26	20	32	4-#7	4-#7	4-#7	#4	2	2@6, R@12	①	
B-27	20	32	4-#7	4-#7	4-#7	#4	2	2@6, R@12	①	
B-28	20	32		4-#7	4-#7	#4	2	2@6, R@12	①	
B-29	20	32	4-#7	4-#9	4-#9	#4	2	2@6, R@12	①	
B-30	20	32		3-#9	4-#9	#4	2	2@4, 14@6, R@12	②	
B-31	30	32		5-#9	6-#9	#4	1	2@4, 16@6, R@12	②	
B-32	30	32		5-#8	6-#9	#4	1	2@4, 16@6, R@12	②	
B-33	20	32	3-#9	3-#9	3-#9	#4	2	2@6, R@12		
B-34	20	32		3-#9	3-#9	#4	2	2@3, 14@6, R@9		
B-35	30	32	6-#8	6-#7	6-#8	#4	1	2@4, R@8		
B-36	30	32		6-#7	6-#8	#4	1	2@4, R@8		
B-37	20	32	4-#7	3-#8	4-#7	#4	2	2@6, R@12	①	
B-38	20	32		3-#8	4-#7	#4	2	2@6, R@12	①	
B-39	20	32	4-#7	4-#7	4-#7	#4	2	2@6, R@12	③	
B-40	20	40		4-#5	4-#5	#4	2	2@6, R@12		
B-41	20	40		3-#8	4-#8	#4	2	2@6, R@12	①	
B-42	16	40		4-#7	4-#6	#4	2	2@6, R@12	①	
B-43	12	32	2-#7	2-#7	2-#7	#4	2	2@6, R@12		
B-44	12	32	2-#7	2-#7	2-#7	#4	2	2@6, R@12	①	

CONCRETE ROOF BEAM SCHEDULE										
MARK	L	S	REINFORCING			STIRRUPS		NOTES		
			TOP BARS LEFT END	BOTTOM BARS	TOP BARS RIGHT END	SIZE	TYPE		SPACING EACH END (IN INCHES)	
RB-1	20	24	4-#5	4-#5	4-#6	#4	2	2@4, R@8		
RB-2	20	24		4-#6	4-#8	#4	2	2@4, R@8	③	
RB-3	20	24		4-#8	4-#8	#4	2	2@4, R@8		
RB-4	20	24		4-#5	4-#5	#4	2	2@4, R@8		
RB-5	20	24		4-#5	4-#5	#4	2	2@4, R@8		
RB-6	30	24	5-#6	5-#5	5-#7	#4	1	2@3, 17@6, R@12		
RB-7	30	24		5-#7	5-#9	#4	1	2@3, R@6		
RB-8	30	24		5-#8	5-#9	#4	1	2@3, 2@6, R@12		
RB-9	30	24		5-#5	5-#9	#4	1	2@3, R@6		
RB-10	30	24		5-#5	5-#6	#4	1	2@3, R@6		
RB-11	20	24	4-#5	4-#5	4-#5	#4	1	2@4, R@8		
RB-12	16	24	4-#9	4-#9	4-#9	#4	2	2@4, R@8	①	
RB-13	20	24		3-#9	4-#5	#4	2	2@4, R@8	①	
RB-14	20	24		4-#5	4-#5	#4	2	2@4, R@8	①	
RB-15	20	24	4-#5	4-#5	5-#7	#4	2	2@4, R@8	①	
RB-16	20	24		4-#5	4-#7	#4	2	2@4, R@8	①	
RB-17	20	24	4-#5	4-#5	4-#5	#4	2	2@4, R@8	①	
RB-18	20	24		4-#5	4-#5	#4	2	2@4, R@8	①	
RB-19	12	24	3-#5	3-#5	3-#5	#4	2	2@4, R@8		
RB-20	8	24	2-#6	2-#6	2-#6	#4	2	2@4, R@8		
RB-21	16	24	3-#8	3-#9	3-#9	#4	2	2@4, R@8	①	
RB-22	16	24		3-#9	3-#9	#4	2	2@4, R@8	①	
RB-23	12	24	3-#5	3-#5	3-#5	#4	2	2@4, R@8	①	
RB-24	12	24	3-#8	3-#8	3-#8	#4	2	15@4, R@6		
RB-25	12	24		3-#8	3-#8	#4	2	15@4, R@6		
RB-26	12	24	3-#7	3-#7	3-#7	#4	2	2@4, R@8	①	
RB-27	12	24		3-#7	3-#7	#4	2	2@4, R@8	①	
RB-28	20	24	4-#7	4-#7	4-#7	#4	2	2@6, R@12	①	
RB-29	20	24	4-#7	4-#7	4-#7	#4	2	2@6, R@12	①	
RB-30	20	24		4-#7	4-#7	#4	2	2@6, R@12	①	
RB-31	30	24	5-#7	5-#7	5-#7	#4	2	2@6, R@12		

- NOTES:
 1. PROVIDE 3" CLEAR TO STIRRUP TOP & BOTTOM.
 2. PROVIDE 3" CLEAR TO STIRRUPS TOP.
 3. EXTEND TOP & BOT. BARS OUT TO 2" CLEAR END OF CANTILEVER.



PH&J architects inc. Montgomery, Alabama

CIP-2017-001 UPGRADES TO THE MOBILE COUNTY METRO JAIL For The MOBILE COUNTY COMMISSION MOBILE, ALABAMA



DRAWN	SAC	CHECK	WD
DATE	APRIL 2, 2019 RTA		
REVISED			
REVISED			

SHEET TITLE
BEAM SCHEDULE

JOB NO.
PH&J 1801-GV

SEQUENCE NO. 98 OF 175

S3.2
© PH&J ARCHITECTS, INC. ALL RIGHTS RESERVED.