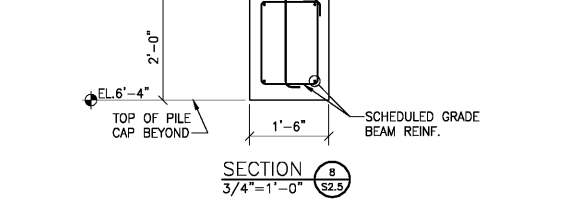
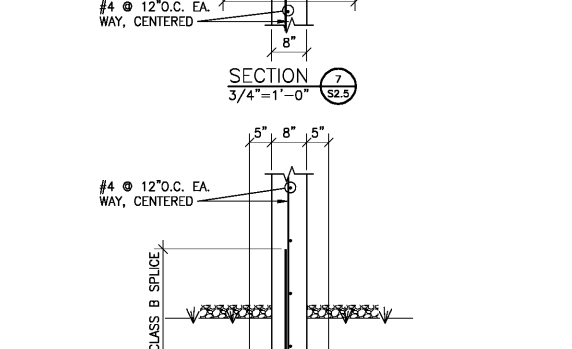
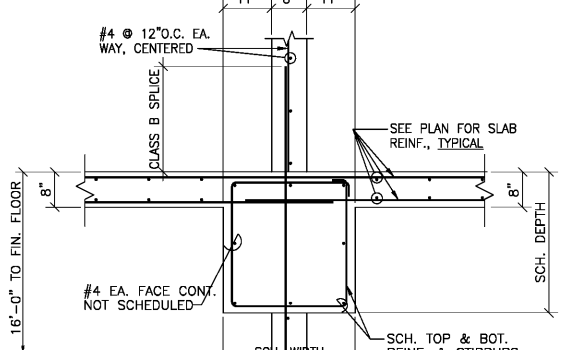
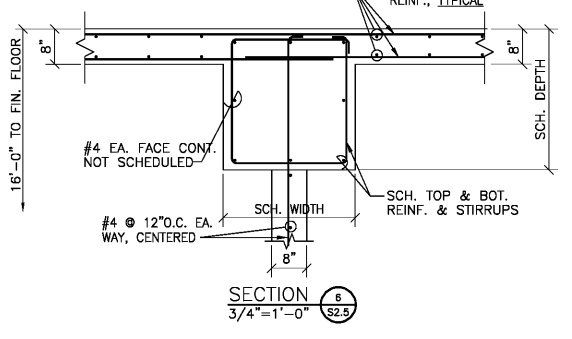
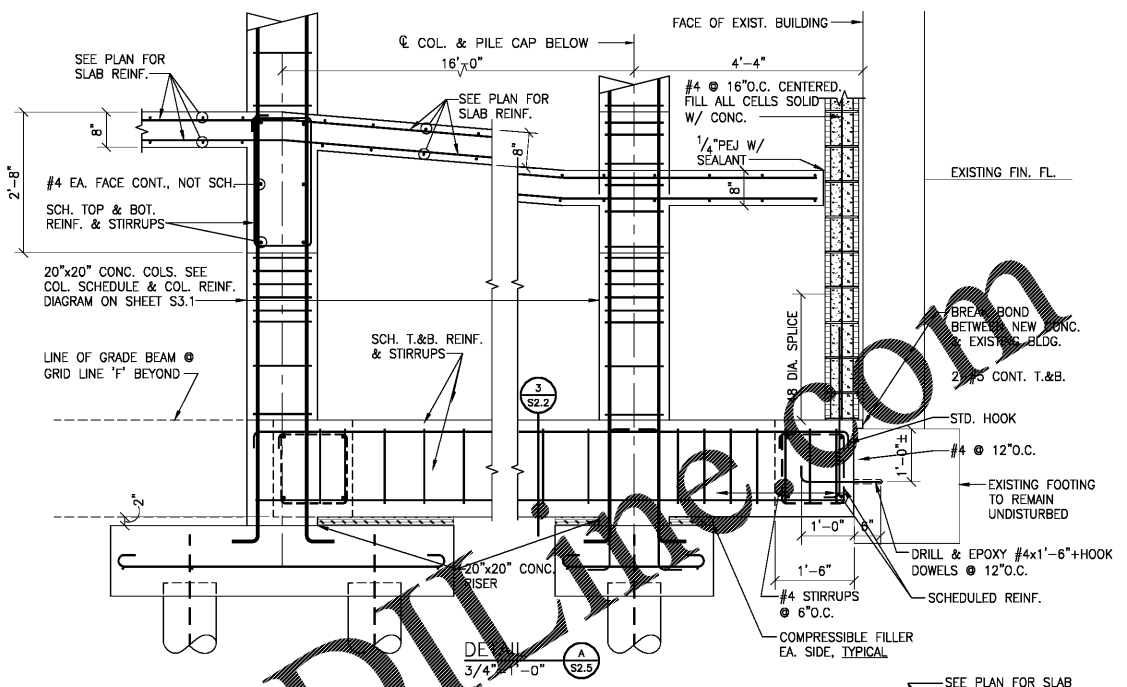


NOTE:
ALL STEEL BEAMS,
CONNECTIONS, &
EMBEDS SHALL BE
HOT DIP GALVANIZED



Order Plans @

WWW.LDLINE.COM

architects inc.
Montgomery, Alabama

CIP-2017-001
UPGRADES TO THE MOBILE COUNTY METRO JAIL
For The MOBILE COUNTY COMMISSION
MOBILE, ALABAMA



DRAWN	SAS	CHECK	MD
DATE	APRIL 2, 2019 RTA		
REVISED			
REVISED			

SHEET TITLE	SECTIONS AND DETAILS
JOB NO.	PH&J 1801-GV
SEQUENCE NO.	95 OF 175

S2.5
© PH&J ARCHITECTS, INC.
ALL RIGHTS RESERVED