

CIP-2017-001
UPGRADES TO THE MOBILE COUNTY METRO JAIL
FOR THE MOBILE COUNTY COMMISSION
MOBILE, ALABAMA

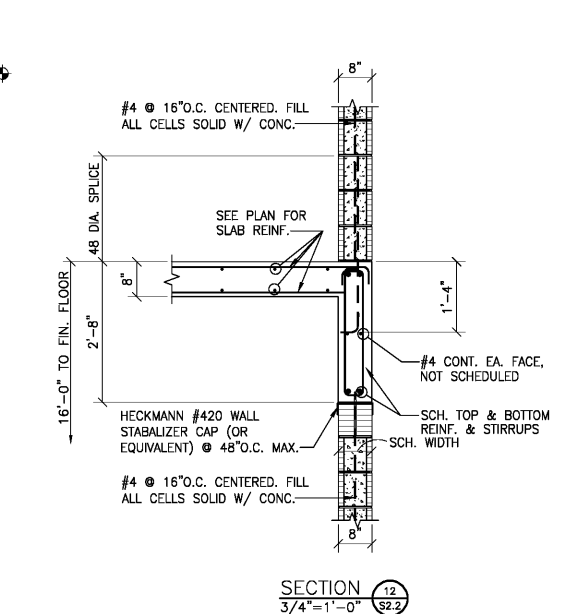
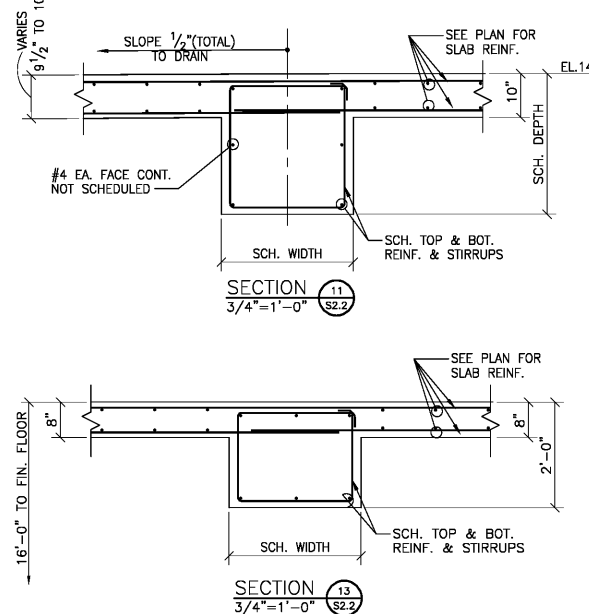
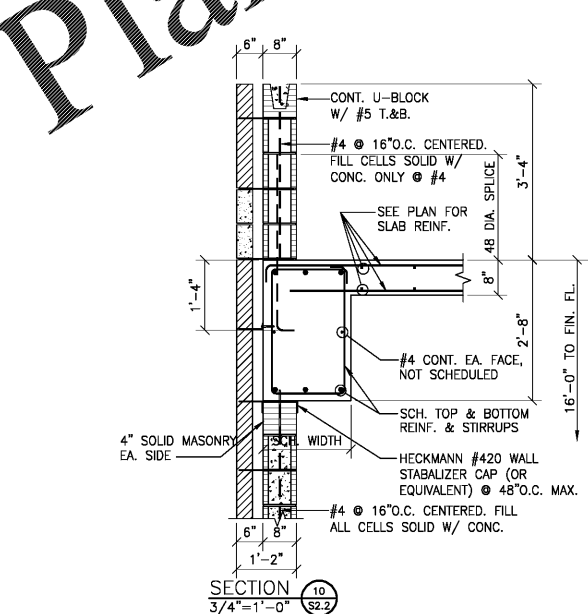
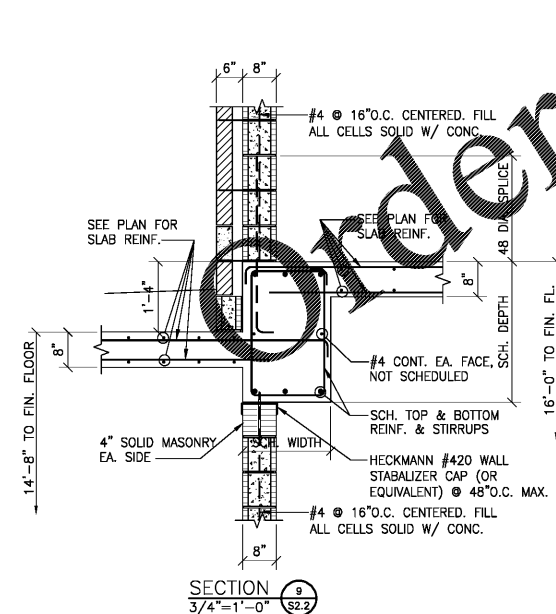
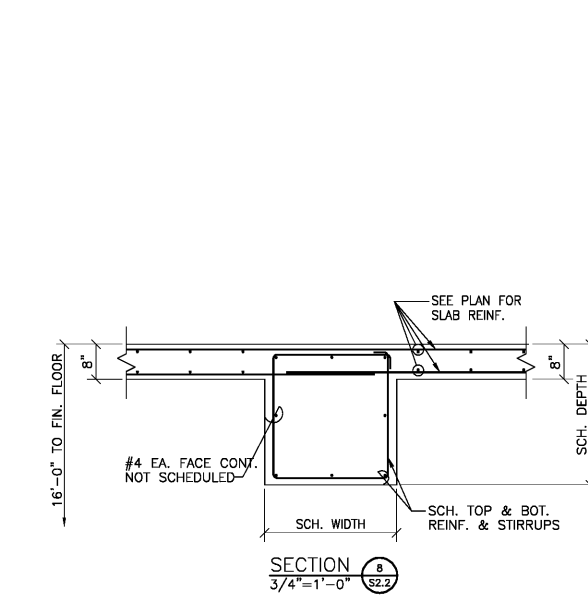
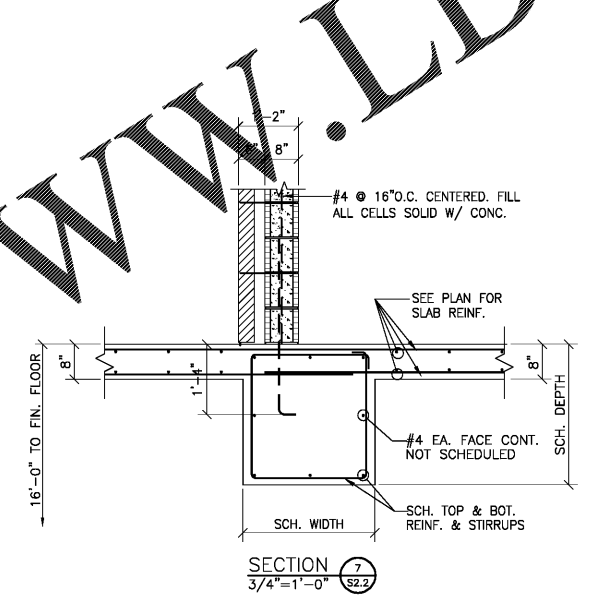
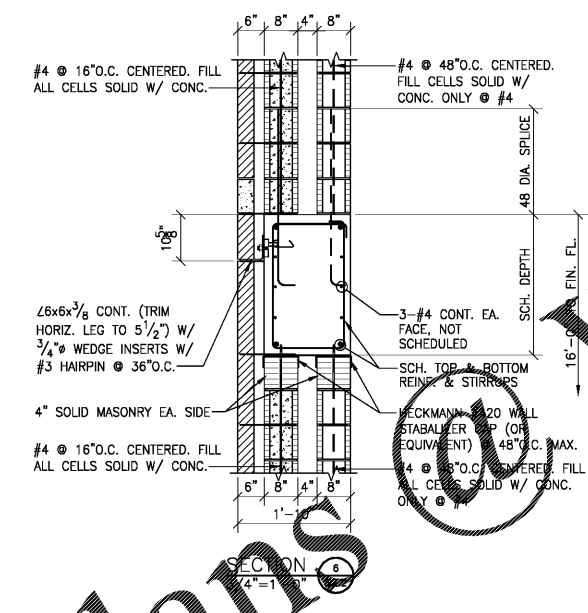
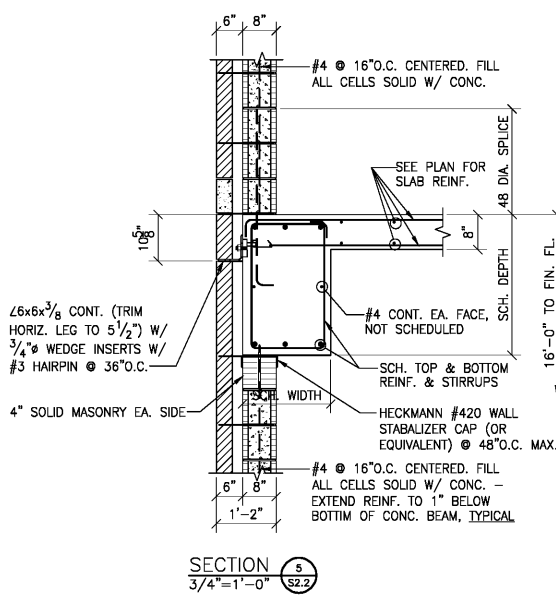
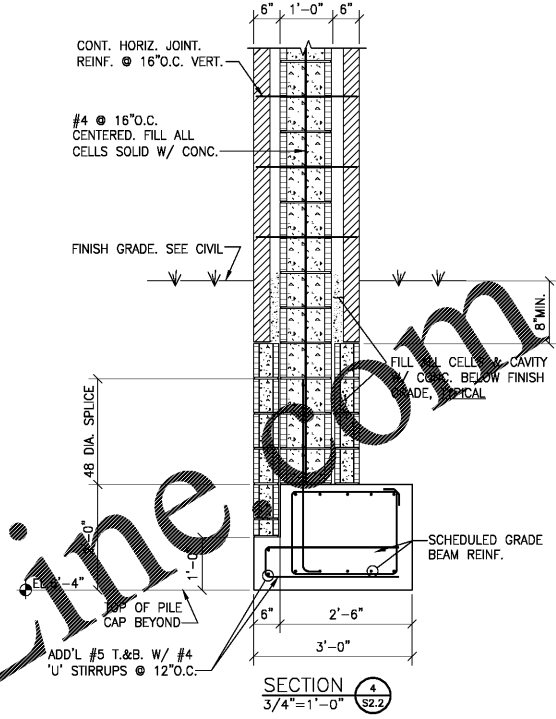
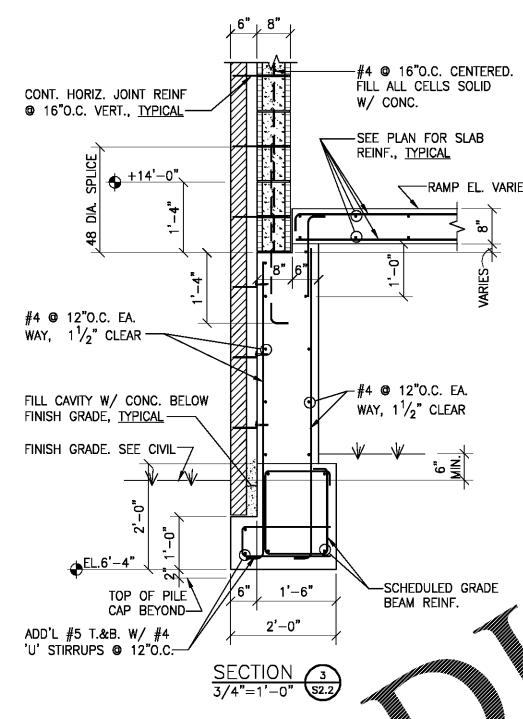
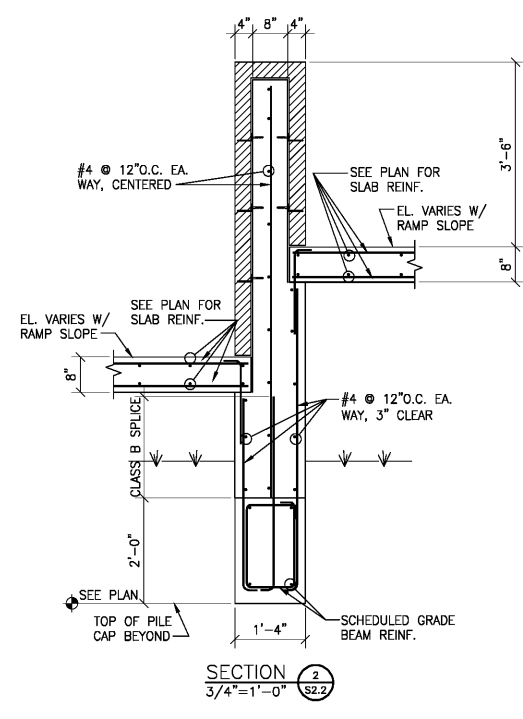
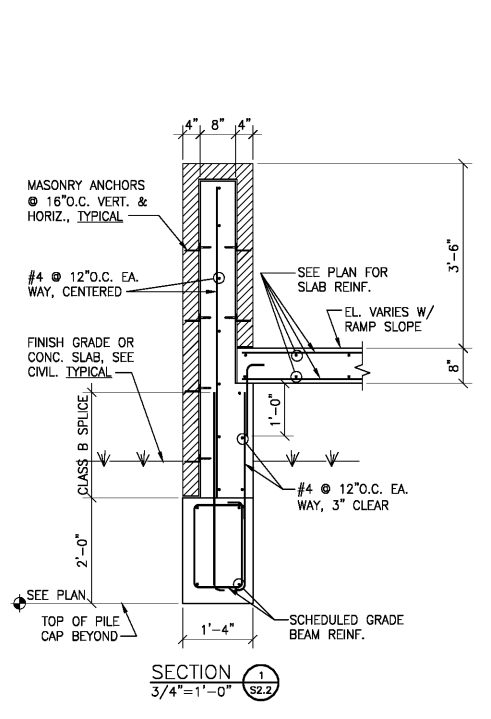


DRAWN	ASD	CHECK	AWD
DATE	APRIL 2, 2019 RTA		
REVISED			
REVISED			

SHEET TITLE
SECTIONS AND DETAILS

PH&J 1801-GV
SEQUENCE NO. 92 OF 175

S2.2
© PH&J ARCHITECTS, INC.
ALL RIGHTS RESERVED



WWW.LDILINE.COM