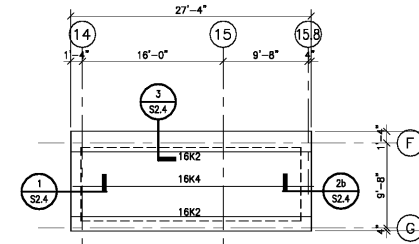
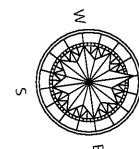
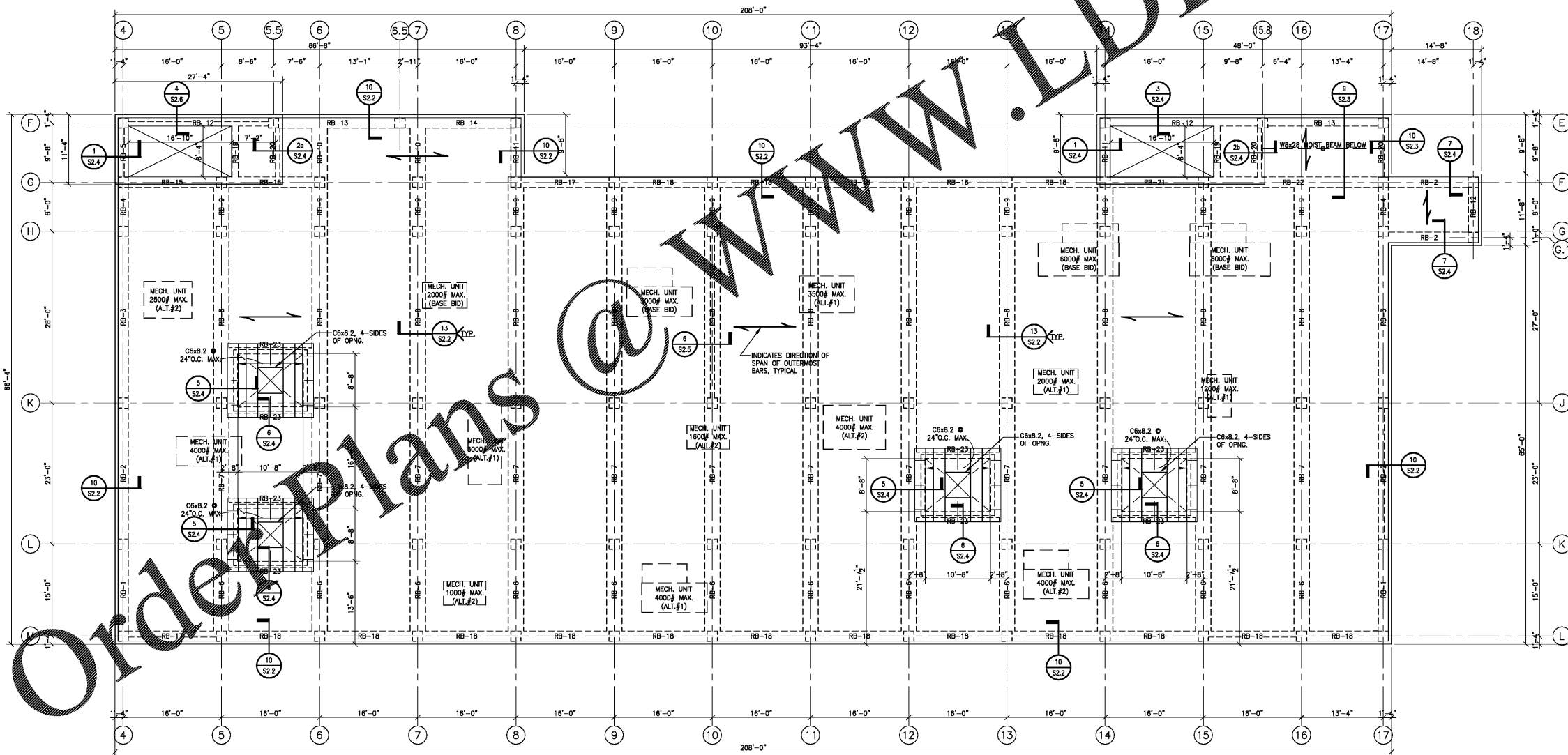


RAISED ROOF FRAMING FRAMING PLAN - MAIN BUILDING  
(BASE BID & ALTERNATES 2 & 3)  
SCALE: 1/8" = 1'-0"

**ROOF CONSTRUCTION**  
RIGID INSULATION OVER 1 1/2" DEEP,  
22 GAGE, WIDE RIB STEEL DECK W/ THE  
FOLLOWING MINIMUM SECTION PROPERTIES  
PER FOOT OF WIDTH:  
S=0.19 IN.<sup>3</sup> I<sup>4</sup>=0.16 IN.<sup>4</sup> I<sup>2</sup>=0.18 IN.<sup>4</sup>



RAISED ROOF FRAMING FRAMING PLAN - MAIN BUILDING  
(ALTERNATES 2 & 3)  
SCALE: 1/8" = 1'-0"



ROOF FRAMING FRAMING PLAN - MAIN BUILDING (ALTERNATES 2 & 3)  
SCALE: 1/8" = 1'-0"

**ROOF CONSTRUCTION**  
8" THICK CONCRETE SLAB W/ #5 @ 12"O.C.  
3/4" CLEAR TOP & BOTTOM W/ #4 @ 12"O.C.  
TOP & BOTTOM TEMPERATURE REINF.

CIP-2017-001  
UPGRADES TO THE MOBILE COUNTY METRO JAIL  
For The MOBILE COUNTY COMMISSION  
MOBILE, ALABAMA



DRAWN	RAS	CHECK	WD
DATE	APRIL 2, 2019 RTA		
REVISED			
REVISED			

SHEET TITLE	ROOF FRAMING PLAN ALTERNATES 2 & 3
CSB NO.	PH&J 1801-GV
SEQUENCE NO.	89 OF 175

**S1.8**  
© PH&J ARCHITECTS, INC.  
ALL RIGHTS RESERVED