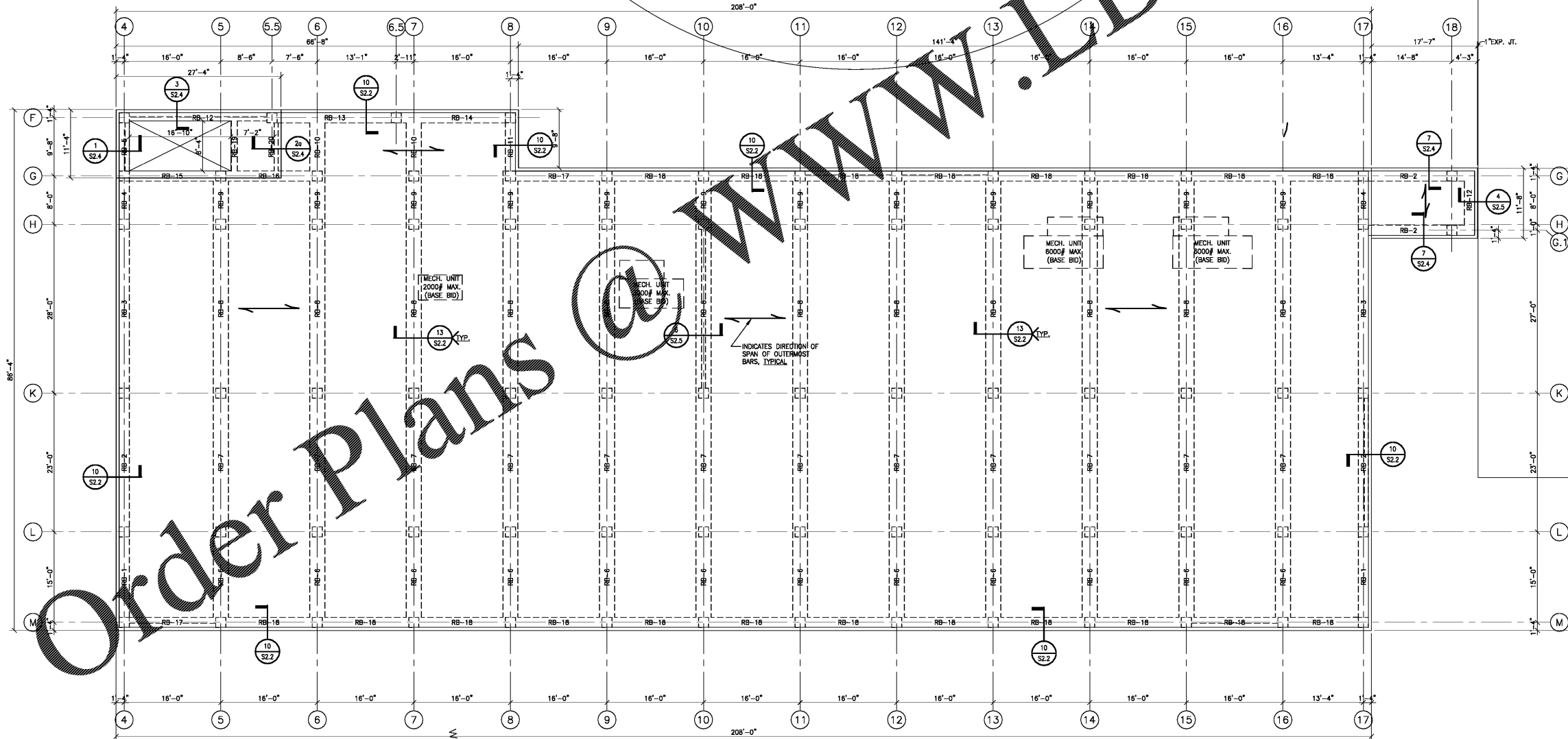
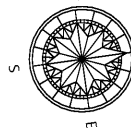


**ROOF CONSTRUCTION**  
 RIGID INSULATION OVER 1 1/2" DEEP,  
 22 GAGE, WIDE RIB STEEL DECK W/ THE  
 FOLLOWING MINIMUM SECTION PROPERTIES  
 PER FOOT OF WIDTH:  
 S=0.19 IN.<sup>3</sup> I<sup>x</sup>=0.16 IN.<sup>4</sup> I<sup>y</sup>=0.18 IN.<sup>4</sup>

**RAISED ROOF FRAMING FRAMING PLAN - MAIN BUILDING**  
 (BASE BID)  
 SCALE: 1/8" = 1'-0"

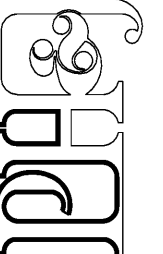


Order Plans @ www.LDILine.com



**ROOF FRAMING FRAMING PLAN - MAIN BUILDING (BASE BID)**  
 SCALE: 1/8" = 1'-0"

**ROOF CONSTRUCTION**  
 8" THICK CONCRETE SLAB W/ #5 @ 12"O.C.  
 3/4" CLEAR TOP & BOTTOM W/ #4 @ 12"O.C.  
 TOP & BOTTOM TEMPERATURE REINF.



CIP-2017-001  
 UPGRADES TO THE MOBILE COUNTY METRO JAIL  
 For The MOBILE COUNTY COMMISSION  
 MOBILE, ALABAMA



DRAWN	SAS	CHECK	AWD
DATE	APRIL 2, 2019 RTA		
REVISED			
REVISED			

SHEET TITLE  
**ROOF FRAMING PLAN**  
 BASE BID &  
 ALTERNATES

JOB NO.  
 PH&J 1801-GV

SEQUENCE  
 NO. RB OF 175

**S1.7**

© PH&J ARCHITECTS, INC.  
 ALL RIGHTS RESERVED