

CIP-2017-001
UPGRADES TO THE MOBILE COUNTY METRO JAIL
FOR THE MOBILE COUNTY COMMISSION
MOBILE, ALABAMA



DRAWN	SAS	CHECK	AWD
DATE	APRIL 2, 2019 RTA		
REVISED			
REVISED			

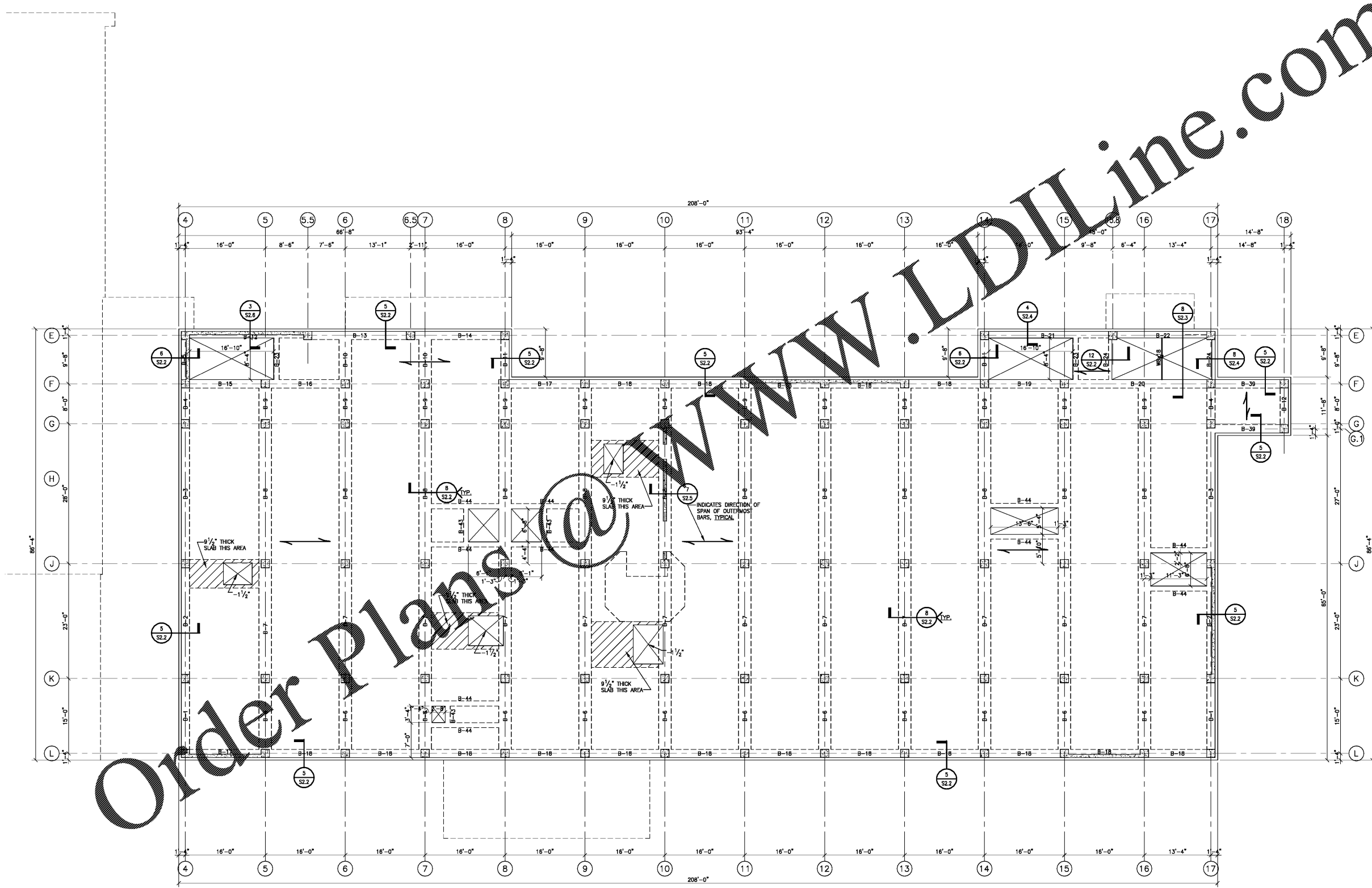
SHEET TITLE
THIRD FLOOR FRAMING PLAN
ALTERNATE 3

JOB NO.
PH&J 1801-GV

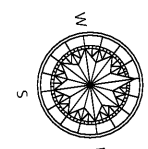
SEQUENCE
NO. 87 OF 175

S1.6

© PH&J ARCHITECTS, INC.
ALL RIGHTS RESERVED



Order Plans @ www.LDLine.com



THIRD FLOOR FRAMING PLAN - MAIN BUILDING (ALTERNATE 3)
SCALE: 1/8" = 1'-0"

FLOOR CONSTRUCTION
8" THICK CONCRETE SLAB W/ #6 @ 8" O.C.
3/4" CLEAR TOP & BOTTOM W/ #4 @ 12" O.C.
TOP & BOTTOM TEMPERATURE REINF.