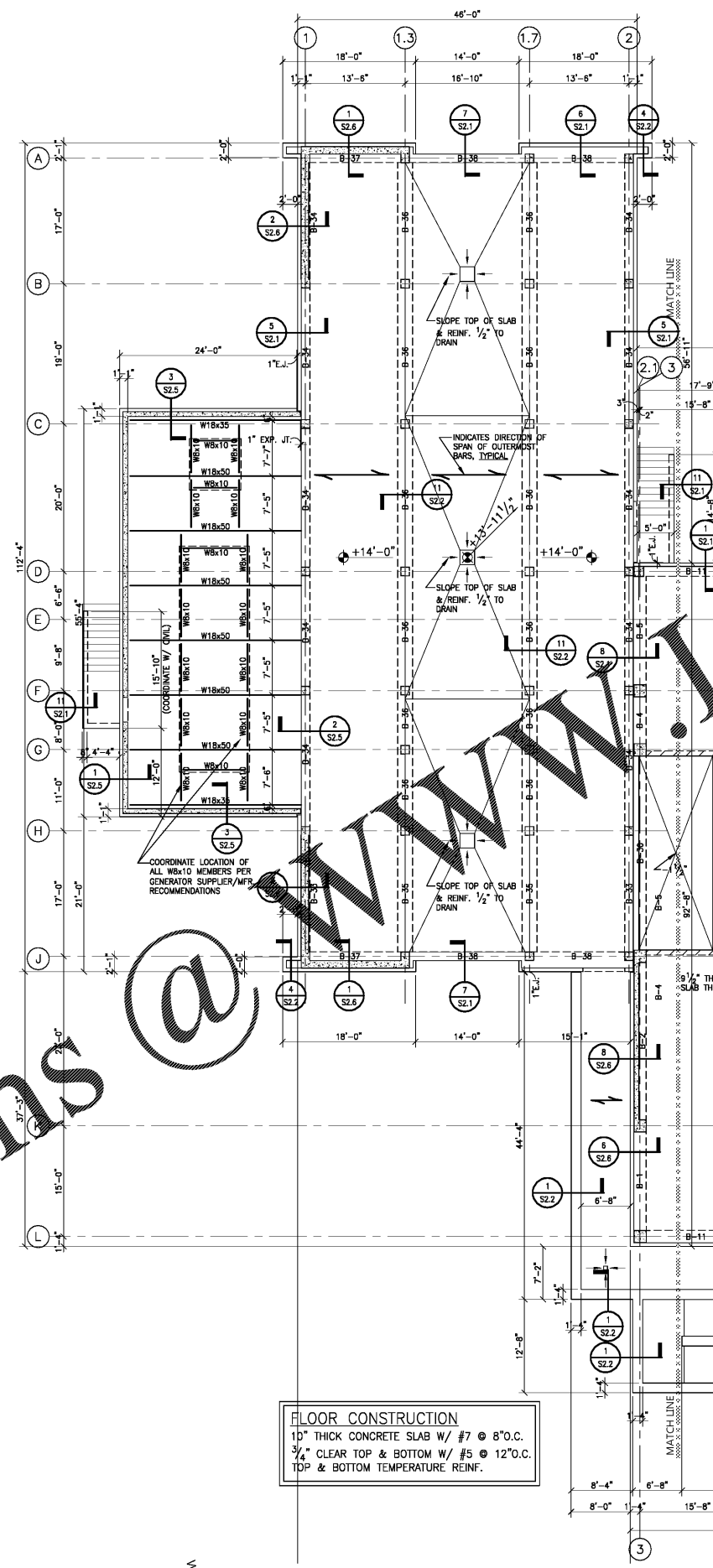
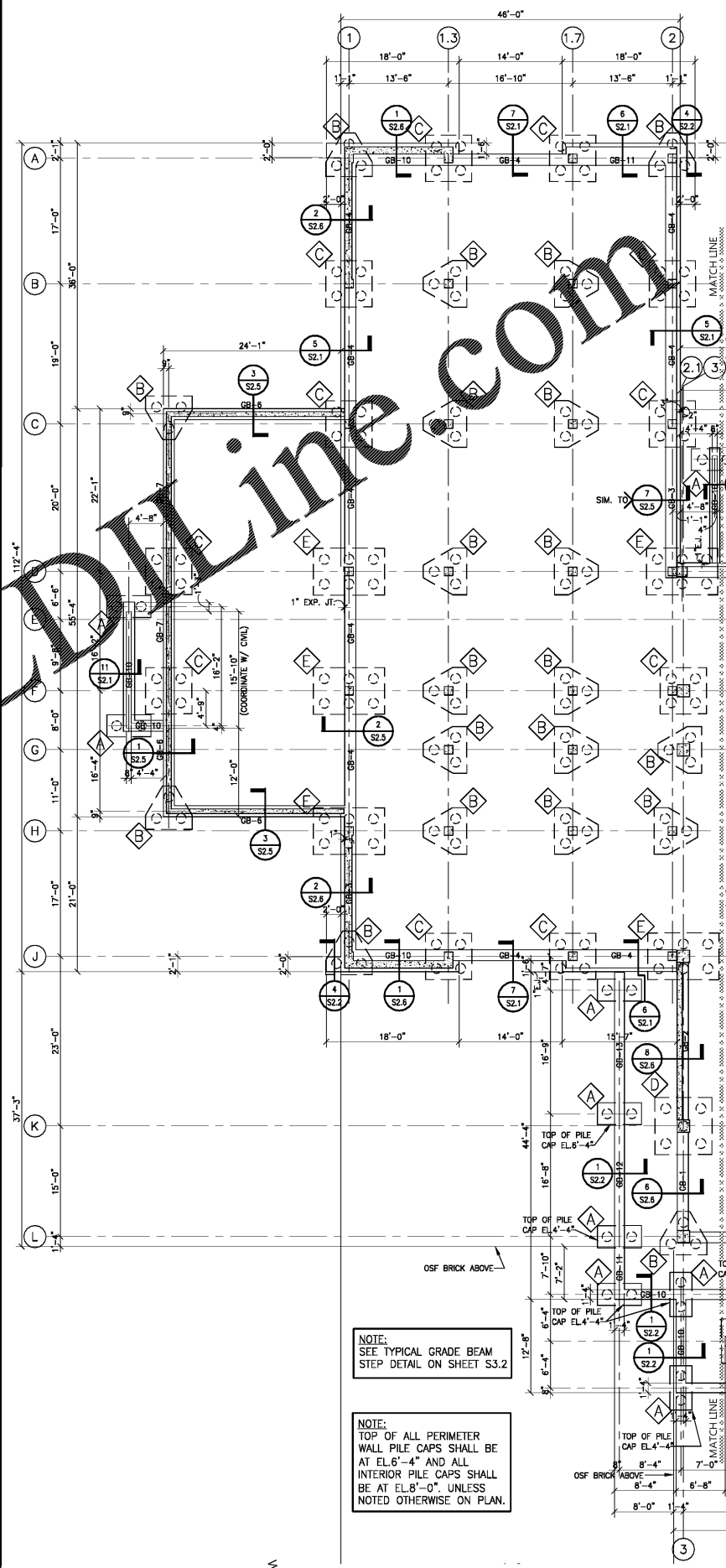


Order Plans @ PH&J architects inc. Montgomery, Alabama



Order Plans @ PH&J architects inc. Montgomery, Alabama



Order Plans @ PH&J architects inc. Montgomery, Alabama

Roof Framing Plan - Sally Port  
 SCALE: 1/8" = 1'-0"

Floor Framing Plan - Sally Port  
 SCALE: 1/8" = 1'-0"

Foundation Plan - Sally Port  
 SCALE: 1/8" = 1'-0"

PH&J architects inc. Montgomery, Alabama

CIP-2017-001  
 UPGRADES TO THE MOBILE COUNTY METRO JAIL  
 For The MOBILE COUNTY COMMISSION  
 MOBILE, ALABAMA

ALABAMA REGISTERED PROFESSIONAL ARCHITECT  
 No. 30036  
 W. DANIEL SULLY  
 4-2-19

DRAWN	SAS	CHECK	AND
DATE	APRIL 2, 2019 RTA		
REVISED			
REVISED			

SHEET TITLE  
 FOUNDATION, FLOOR,  
 AND ROOF FRAMING  
 PLAN - SALLY PORT

JOB NO.  
 PH&J 1801-GV

SEQUENCE  
 81 OF 175

S1.0

© PH&J ARCHITECTS, INC.  
 ALL RIGHTS RESERVED