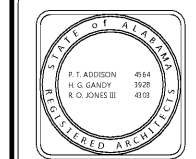
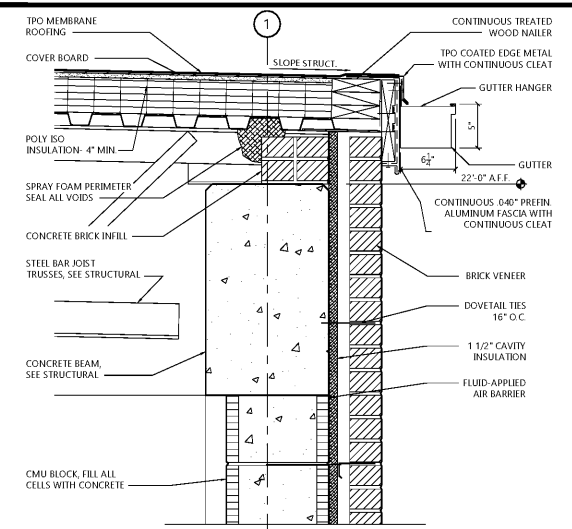
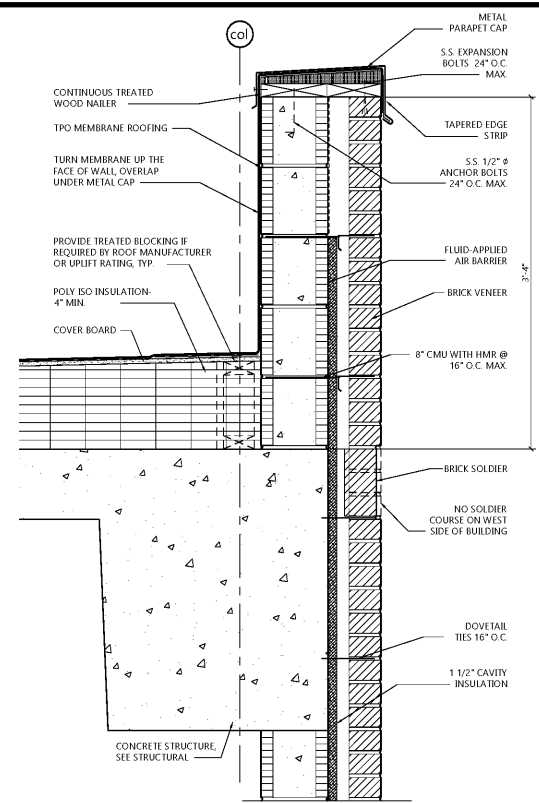


CIP-2017-001
UPGRADES TO THE MOBILE COUNTY METRO JAIL
For The MOBILE COUNTY COMMISSION
MOBILE, ALABAMA

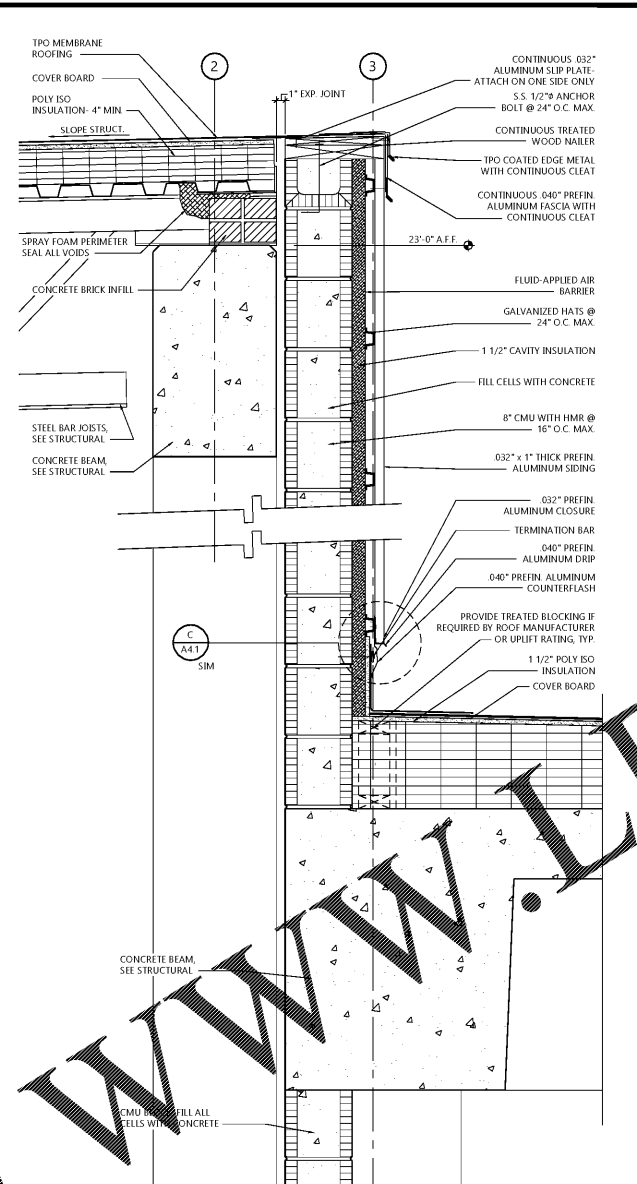


DRAWN	RTS	CHECK	HS
DATE	April 2, 2019 RTA		
REVISED			
REVISED			
SHEET TITLE	DETAILS		
JOB NO.	PH&J 1801-GV		
SEQUENCE NO.	61 of 175		

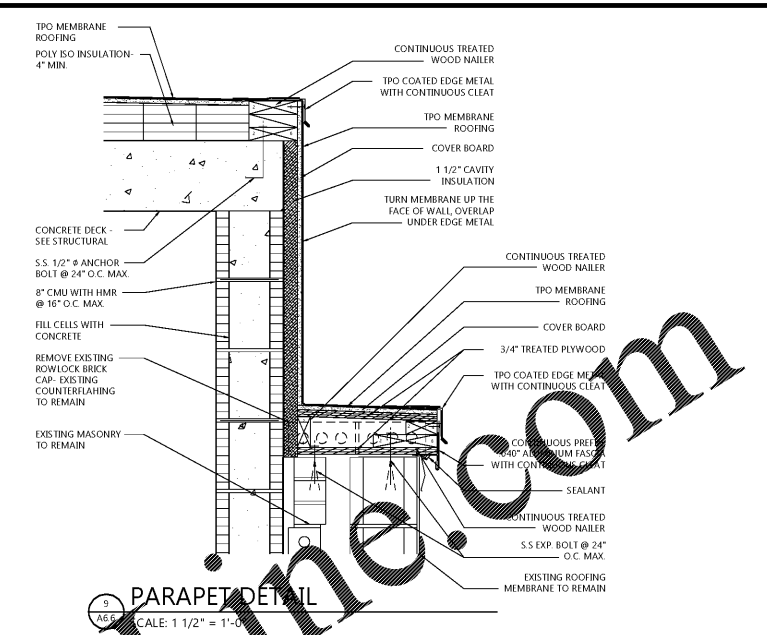
A6.6
PH&J ARCHITECTS, INC.
ALL RIGHTS RESERVED



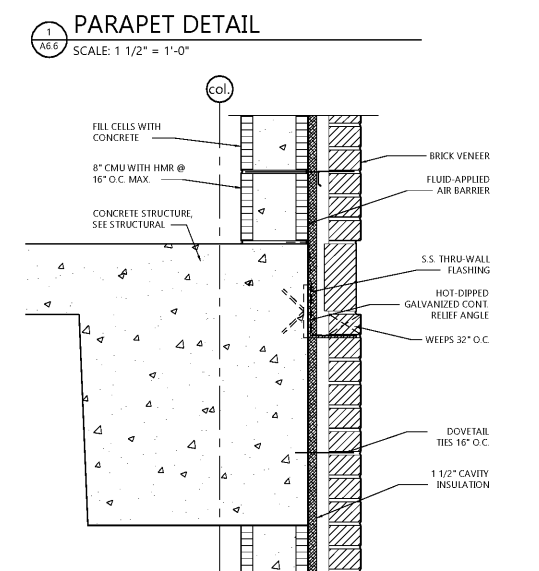
1 ROOF DETAIL at SALLY PORT
SCALE: 1 1/2" = 1'-0"



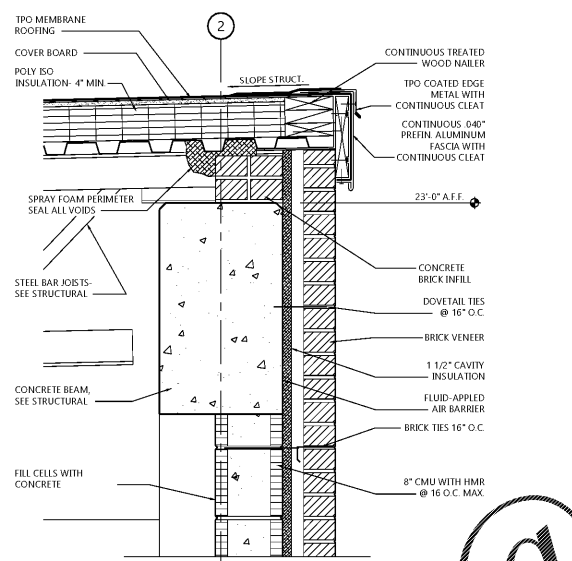
2 ROOF DETAIL at SALLY PORT JUNCTION with 1st. FLOOR of BUILDING
SCALE: 1 1/2" = 1'-0"



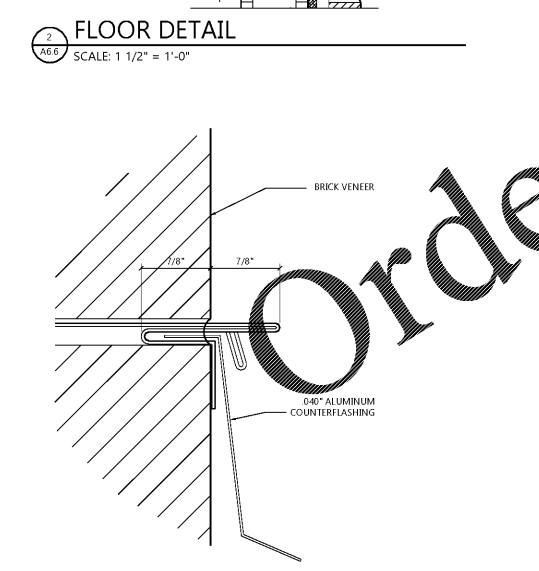
3 PARAPET DETAIL
SCALE: 1 1/2" = 1'-0"



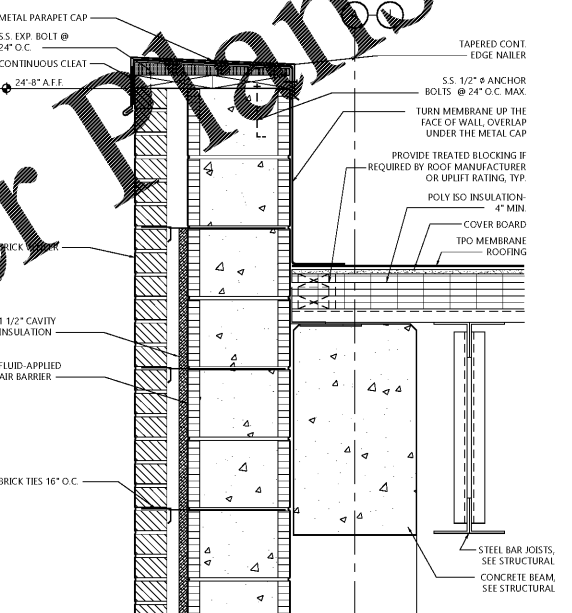
1 PARAPET DETAIL
SCALE: 1 1/2" = 1'-0"



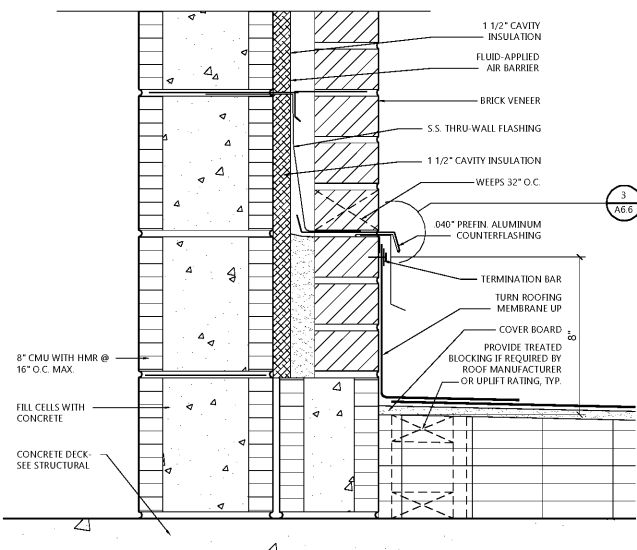
3 ROOF DETAIL at SALLY PORT
SCALE: 1 1/2" = 1'-0"



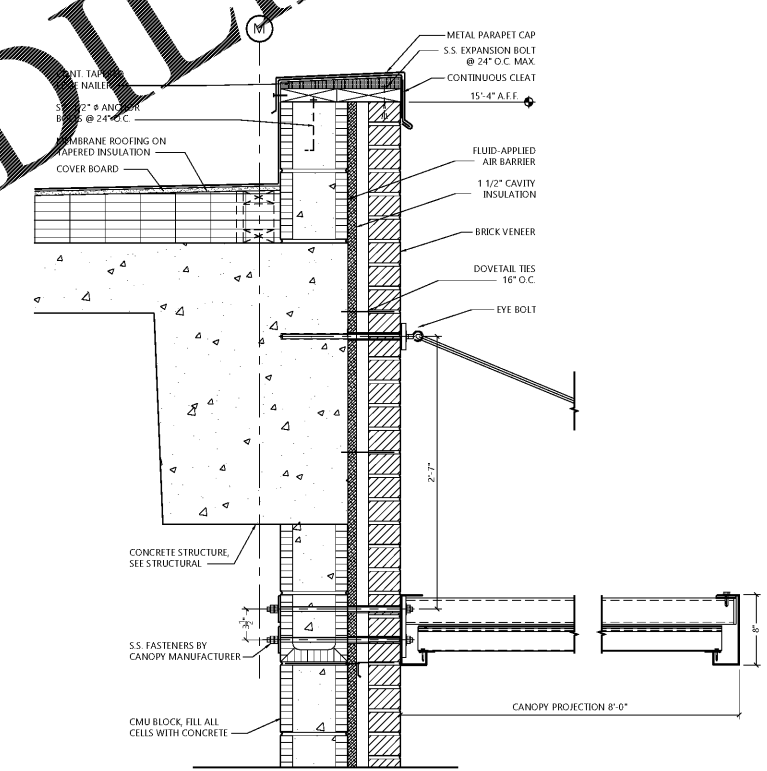
2 FLOOR DETAIL
SCALE: 1 1/2" = 1'-0"



7 ROOF DETAIL at SALLY PORT END WALL
SCALE: 1 1/2" = 1'-0"



8 THRU-WALL FLASHING at ROOF/ WALL JUNCTION
SCALE: 3" = 1'-0"



10 METAL CANOPY DETAIL
SCALE: 1 1/2" = 1'-0"

3 FLASHING DETAIL
SCALE: NTS

Order Plans @

WWW.DIline.com