

CIP-2017-001  
UPGRADES TO THE MOBILE COUNTY METRO JAIL  
For The MOBILE COUNTY COMMISSION  
MOBILE, ALABAMA



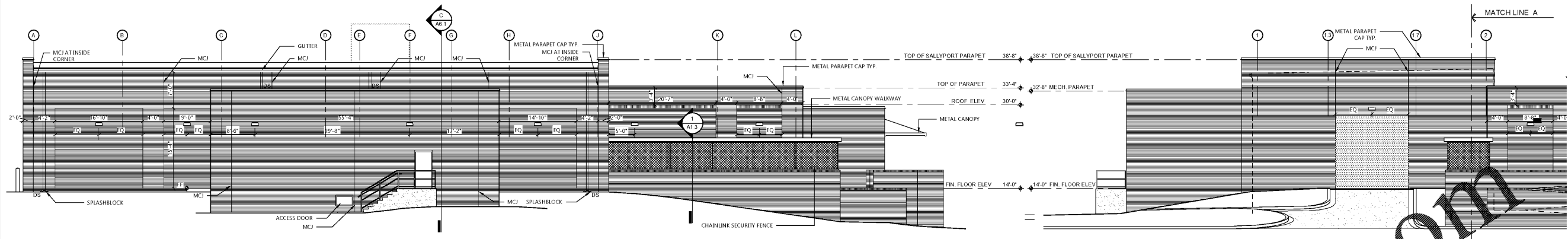
DRAWN	RTS/ST	CHECK	HS
DATE	April 2, 2019 RTA		
REVISED			
REVISED			

SHEET TITLE  
EXTERIOR ELEVATION-  
BASE BID

JOB NO.  
PH&J 1801-GV

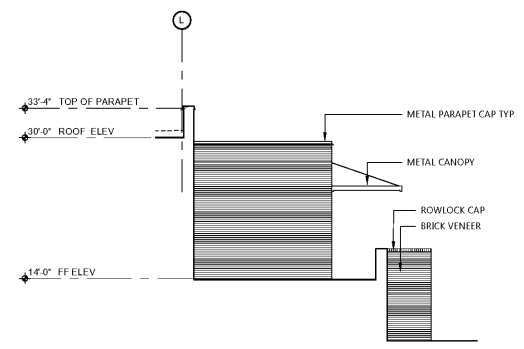
SEQUENCE  
NO. 52 of 175

A5.2  
PH&J ARCHITECTS, INC.  
ALL RIGHTS RESERVED

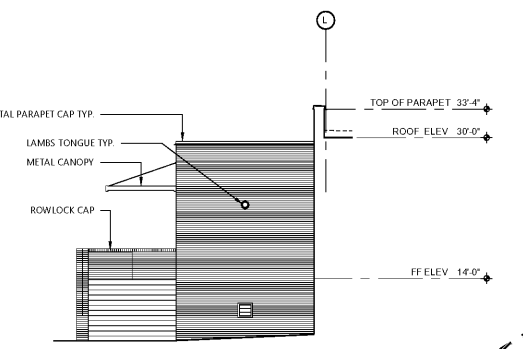


**SOUTH ELEVATION**  
SCALE: 1/8" = 1'-0"  
Graphic Scale

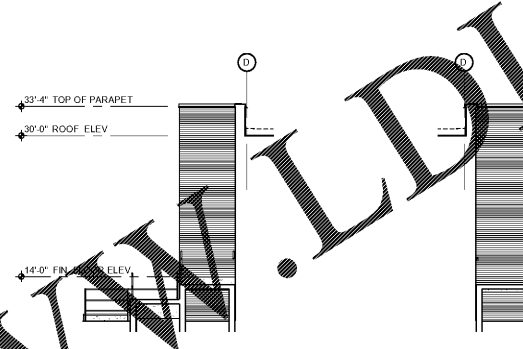
**EAST ELEVATION**  
SCALE: 1/8" = 1'-0"  
Graphic Scale



**SOUTH ELEVATION**  
SCALE: 1/8" = 1'-0"  
Graphic Scale



**NORTH ELEVATION**  
SCALE: 1/8" = 1'-0" ELEVATION "J" IS A MIRROR IMAGE OF "I"  
Graphic Scale

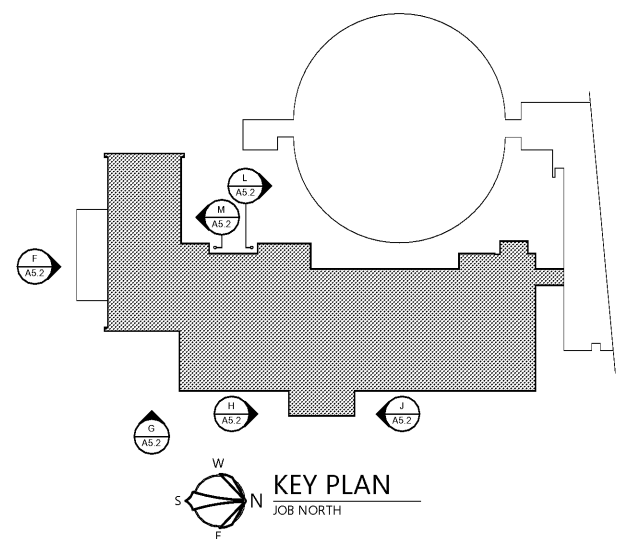


**SOUTH ELEVATION**  
SCALE: 1/8" = 1'-0"  
Graphic Scale



**NORTH ELEVATION**  
SCALE: 1/8" = 1'-0"  
Graphic Scale

Order Plans @ [WWW.LDILine.com](http://WWW.LDILine.com)



BASE BID