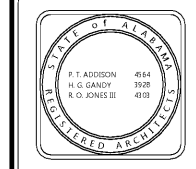


CIP-2017-001
UPGRADES TO THE MOBILE COUNTY METRO JAIL
For The MOBILE COUNTY COMMISSION
MOBILE, ALABAMA

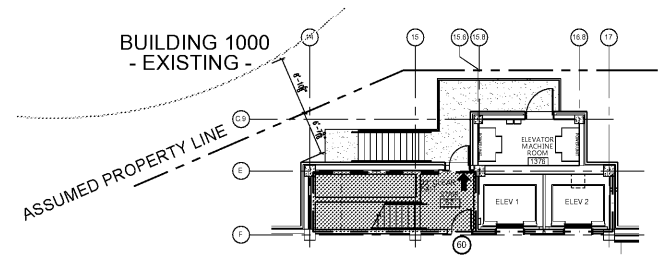


DRAWN: HS CHECK: _____
DATE: April 2, 2019 RTA
REVISED: _____
REVISED: _____

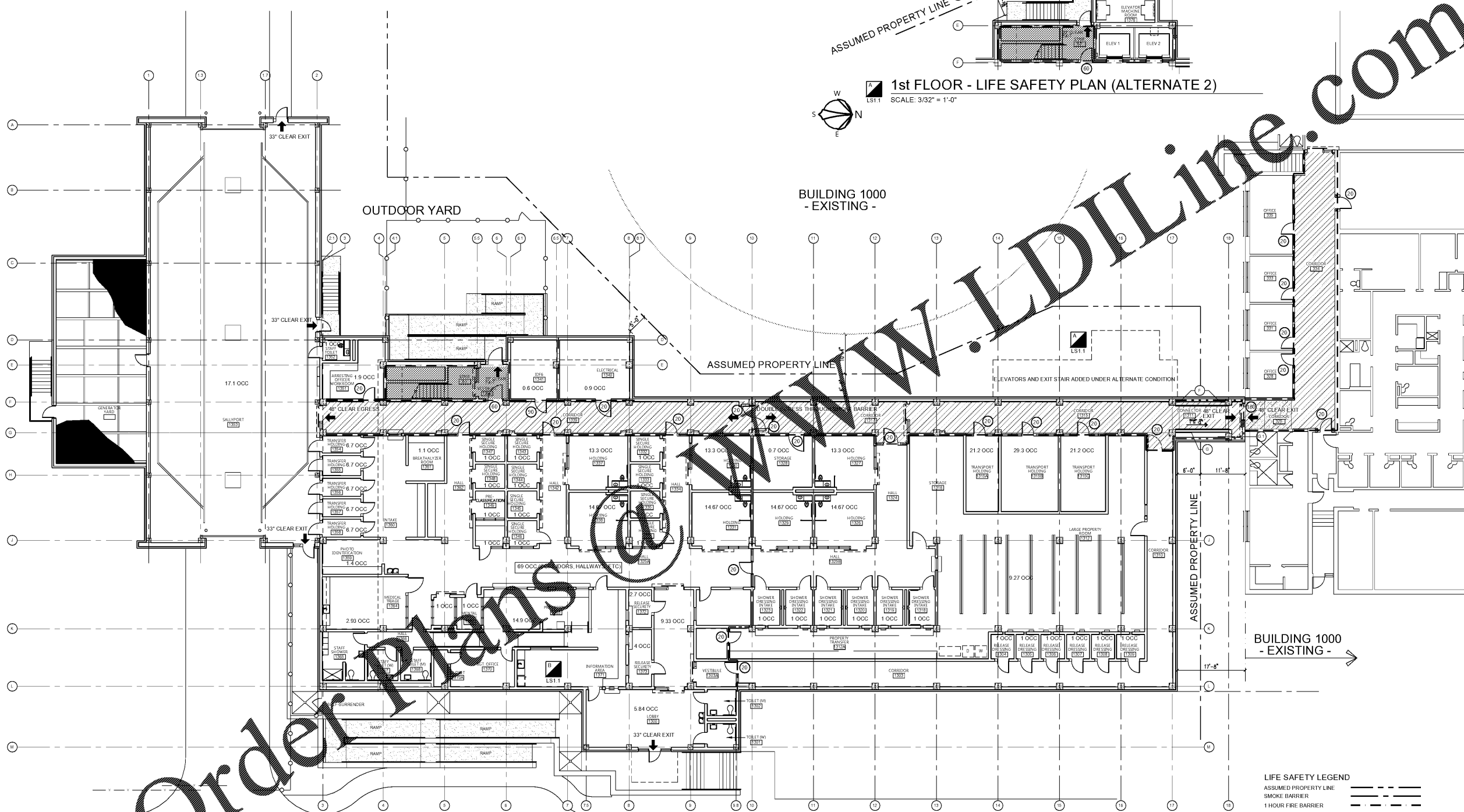
SHEET TITLE
FIRST FLOOR
LIFE SAFETY PLAN

JOB NO.
PH&J 1801-GV
SEQUENCE
NO. 32 of 175

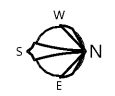
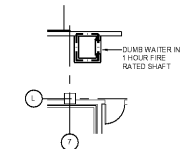
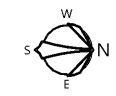
LS1.1
© PH&J ARCHITECTS, INC.
ALL RIGHTS RESERVED



1st FLOOR - LIFE SAFETY PLAN (ALTERNATE 2)
SCALE: 3/32" = 1'-0"



1st FLOOR - LIFE SAFETY PLAN (BASE BID)
SCALE: 3/32" = 1'-0"
GROSS FLOOR AREA - BUILDING 18,690 SF + SALLY PORT 5,114 SF = 23,804 SF



1st FLOOR - LIFE SAFETY PLAN (ALTERNATE 2)
SCALE: 3/32" = 1'-0"

- LIFE SAFETY LEGEND**
- ASSUMED PROPERTY LINE: - - - - -
 - SMOKE BARRIER: [Symbol]
 - 1 HOUR FIRE BARRIER: [Symbol]
 - 1 HOUR FIRE PARTITION: [Symbol]
 - 2 HOUR FIRE BARRIER: [Symbol]
 - 3 HOUR FIRE WALL: [Symbol]
 - STUD WALL EQUAL TO UL# 494: [Symbol]
 - CMU WALL EQUAL TO UL# 906: [Symbol]
 - EXIT: [Symbol]
 - EXIT ACCESS CORRIDOR: [Symbol]
 - EXIT WIDTH: [Symbol]
 - DOOR RATING (MINUTES): (60)
 - 33" CLEAR EXIT: [Symbol]