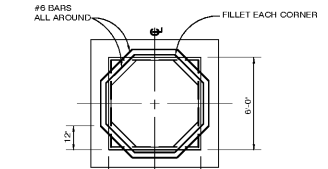
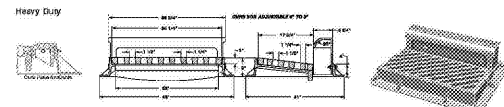
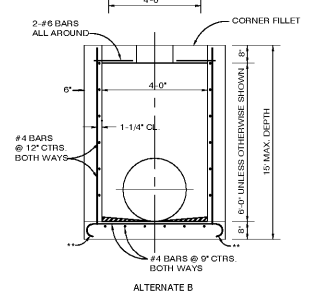


18-3097
Combination Inlet Frame, Grate, Curb Box



TOP AND FLOOR SLAB TABLE - TYPE J

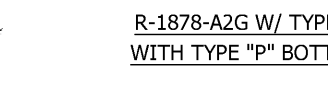
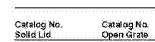
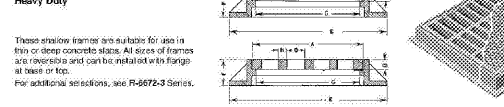
MAX. WIDTH-LENGTH	SLAB THICKNESS	ALLOWABLE FILL OVER TOP SLAB MIN. MAX.	REINFORCING TOP & FLOOR SLABS
3'-0" UNLIMITED	8"	2" 2"	#8 @ 9" CTR B-W
6'-0" 6'-0"	10"	2" 2"	#8 @ 9" CTR B-W
8'-0" 8'-0"	12"	2" 2"	#8 @ 9" CTR B-W
10'-0" 10'-0"	14"	2" 2"	#8 @ 9" CTR B-W
12'-0" 12'-0"	16"	2" 2"	#8 @ 9" CTR B-W
14'-0" 14'-0"	18"	2" 2"	#8 @ 9" CTR B-W
16'-0" 16'-0"	20"	2" 2"	#8 @ 9" CTR B-W
18'-0" 18'-0"	22"	2" 2"	#8 @ 9" CTR B-W
20'-0" 20'-0"	24"	2" 2"	#8 @ 9" CTR B-W
22'-0" 22'-0"	26"	2" 2"	#8 @ 9" CTR B-W
24'-0" 24'-0"	28"	2" 2"	#8 @ 9" CTR B-W
26'-0" 26'-0"	30"	2" 2"	#8 @ 9" CTR B-W
28'-0" 28'-0"	32"	2" 2"	#8 @ 9" CTR B-W
30'-0" 30'-0"	34"	2" 2"	#8 @ 9" CTR B-W
32'-0" 32'-0"	36"	2" 2"	#8 @ 9" CTR B-W
34'-0" 34'-0"	38"	2" 2"	#8 @ 9" CTR B-W
36'-0" 36'-0"	40"	2" 2"	#8 @ 9" CTR B-W
38'-0" 38'-0"	42"	2" 2"	#8 @ 9" CTR B-W
40'-0" 40'-0"	44"	2" 2"	#8 @ 9" CTR B-W
42'-0" 42'-0"	46"	2" 2"	#8 @ 9" CTR B-W
44'-0" 44'-0"	48"	2" 2"	#8 @ 9" CTR B-W
46'-0" 46'-0"	50"	2" 2"	#8 @ 9" CTR B-W
48'-0" 48'-0"	52"	2" 2"	#8 @ 9" CTR B-W
50'-0" 50'-0"	54"	2" 2"	#8 @ 9" CTR B-W
52'-0" 52'-0"	56"	2" 2"	#8 @ 9" CTR B-W
54'-0" 54'-0"	58"	2" 2"	#8 @ 9" CTR B-W
56'-0" 56'-0"	60"	2" 2"	#8 @ 9" CTR B-W
58'-0" 58'-0"	62"	2" 2"	#8 @ 9" CTR B-W
60'-0" 60'-0"	64"	2" 2"	#8 @ 9" CTR B-W
62'-0" 62'-0"	66"	2" 2"	#8 @ 9" CTR B-W
64'-0" 64'-0"	68"	2" 2"	#8 @ 9" CTR B-W
66'-0" 66'-0"	70"	2" 2"	#8 @ 9" CTR B-W
68'-0" 68'-0"	72"	2" 2"	#8 @ 9" CTR B-W
70'-0" 70'-0"	74"	2" 2"	#8 @ 9" CTR B-W
72'-0" 72'-0"	76"	2" 2"	#8 @ 9" CTR B-W
74'-0" 74'-0"	78"	2" 2"	#8 @ 9" CTR B-W
76'-0" 76'-0"	80"	2" 2"	#8 @ 9" CTR B-W
78'-0" 78'-0"	82"	2" 2"	#8 @ 9" CTR B-W
80'-0" 80'-0"	84"	2" 2"	#8 @ 9" CTR B-W
82'-0" 82'-0"	86"	2" 2"	#8 @ 9" CTR B-W
84'-0" 84'-0"	88"	2" 2"	#8 @ 9" CTR B-W
86'-0" 86'-0"	90"	2" 2"	#8 @ 9" CTR B-W
88'-0" 88'-0"	92"	2" 2"	#8 @ 9" CTR B-W
90'-0" 90'-0"	94"	2" 2"	#8 @ 9" CTR B-W
92'-0" 92'-0"	96"	2" 2"	#8 @ 9" CTR B-W
94'-0" 94'-0"	98"	2" 2"	#8 @ 9" CTR B-W
96'-0" 96'-0"	100"	2" 2"	#8 @ 9" CTR B-W



R-1878-A2G W/ TYPE C GRATE WITH TYPE "P" BOTTOM DETAIL

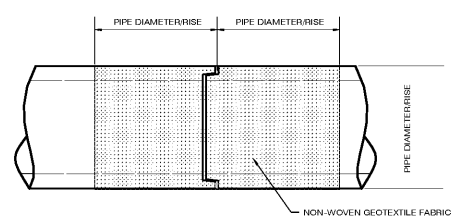
* SEE SLAB TABLE
 ** PERIPHERAL BARS OR STRAIGHT END EMBEDMENTS MAY BE USED IN LIEU OF STANDARD HOOKS, IN ACCORDANCE WITH DETAILS INDEX NO. 201, SH. 3 OF 6.

22-3098-C2
Combination Inlet Frame, Grate

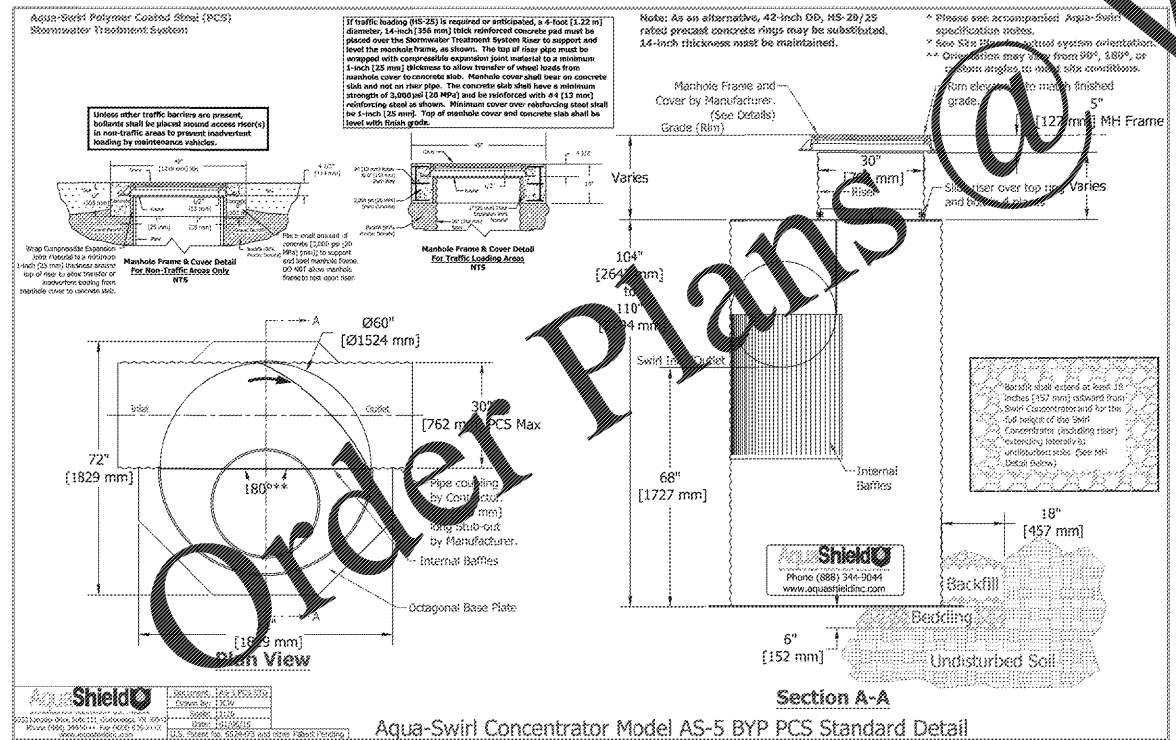
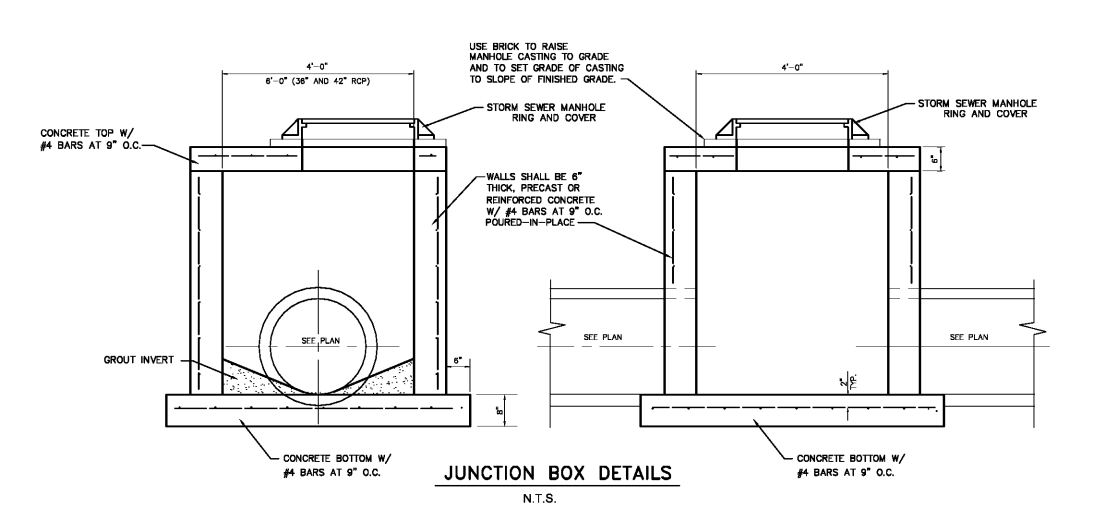
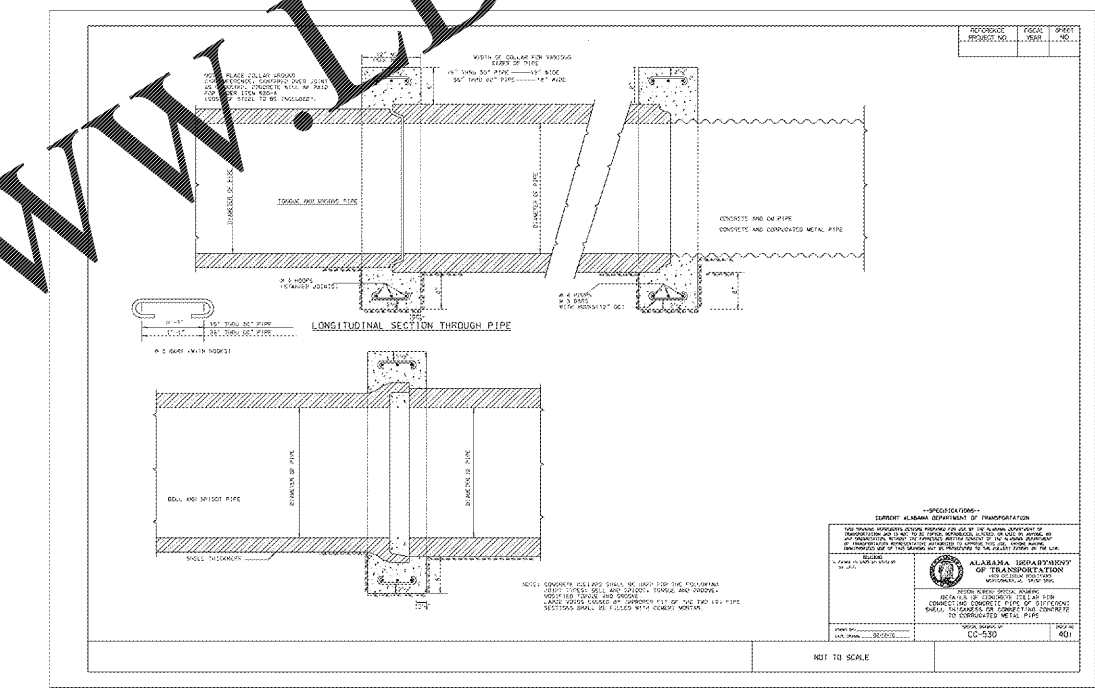
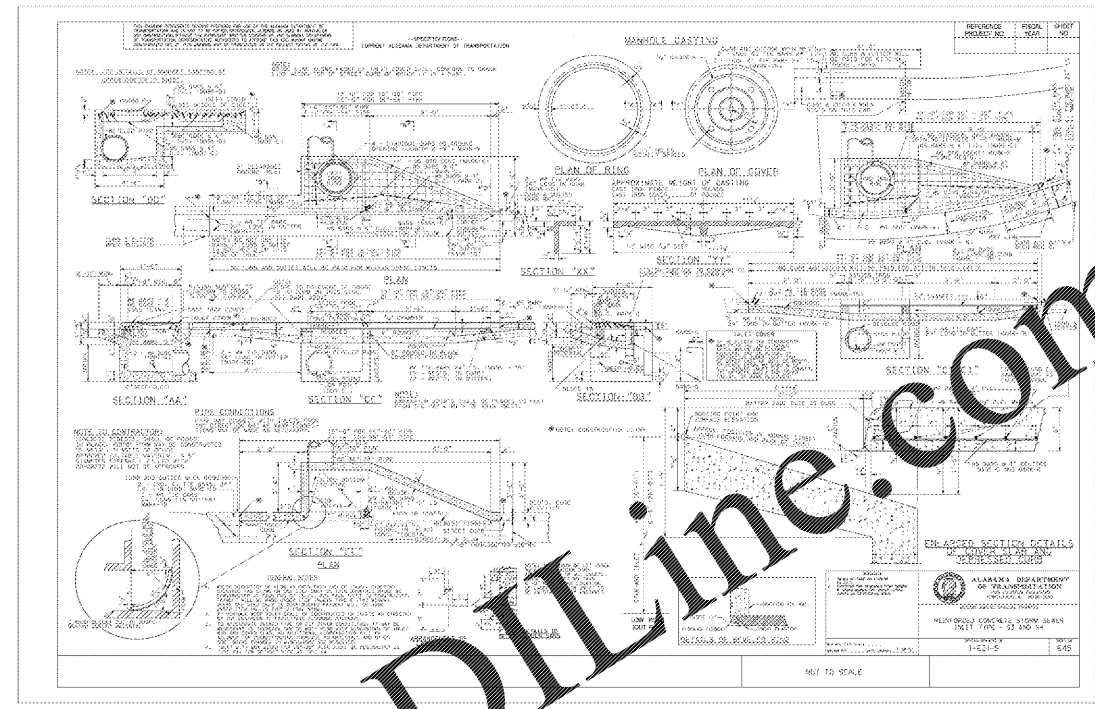


Dimensions in Inches

Catalog No. Solid Lid	Catalog No. Open Grate	A	B	C	E	F	G	H
R-1878-A18	R-1878-A18G	13 1/4	13 3/4	1 1/2	12 x 12	19 x 19	4	1 x 5 1/2
R-1878-A18	R-1878-A20G	13 1/4	13 3/4	1 1/2	16 x 16	22 x 22	4	1 1/4 x 4 1/4
R-1878-A18	R-1878-A22G	13 1/4	13 3/4	1 1/2	18 x 18	24 x 24	4	1 1/2 x 3 3/8
R-1878-A18	R-1878-A24G	13 1/4	13 3/4	1 1/2	20 x 20	26 x 26	4	1 3/8 x 3 3/8
R-1878-A18	R-1878-A26G	13 1/4	13 3/4	1 1/2	22 x 22	28 x 28	4	1 1/2 x 3 3/8
R-1878-A18	R-1878-A28G	13 1/4	13 3/4	1 1/2	24 x 24	30 x 30	4	1 3/8 x 3 3/8
R-1878-A18	R-1878-A30G	13 1/4	13 3/4	1 1/2	26 x 26	32 x 32	4	1 1/2 x 3 3/8
R-1878-A18	R-1878-A32G	13 1/4	13 3/4	1 1/2	28 x 28	34 x 34	4	1 1/4 x 3 3/8
R-1878-A18	R-1878-A34G	13 1/4	13 3/4	1 1/2	30 x 30	36 x 36	4	1 3/8 x 3 3/8
R-1878-A18	R-1878-A36G	13 1/4	13 3/4	1 1/2	32 x 32	38 x 38	4	1 1/2 x 3 3/8
R-1878-A18	R-1878-A38G	13 1/4	13 3/4	1 1/2	34 x 34	40 x 40	4	1 3/4 x 3 3/8
R-1878-A18	R-1878-A40G	13 1/4	13 3/4	1 1/2	36 x 36	42 x 42	4	1 3/4 x 3 3/8



WRAPPED PIPE JOINT DETAIL
 NTS



WQV STRUCTURE DETAIL (OR APPROVED EQUAL)
 NTS

JADE
 CONSULTING, LLC
 Jemright & Associates Development Engineers
 208 Greene Road North, Fairhope, Alabama 36532
 P.O. Box 1929, Fairhope, Alabama 36533
 251.921.3443 (cell) 251.921.3605 (fax)
 CA #45157-18 jadeengineers.com

architects inc.
 Montgomery, Alabama

PH&J
 CIP-2017-001
 UPGRADES TO THE MOBILE COUNTY METRO JAIL
 FOR THE MOBILE COUNTY COMMISSION
 MOBILE, ALABAMA

Professional Engineer Seal for C. Jemright, No. 55718, State of Alabama.
 DRAWN: SBR, CHECK: PCJ
 DATE: April 2, 2019 RTA
 SHEET TITLE: CIVIL CONSTRUCTION DETAILS (1) BASE BID
 JOB NO.: PH&J 1801-GV
 REVISIONS: 26 OF 175
C9.0
 © PH&J ARCHITECTS, INC. ALL RIGHTS RESERVED.