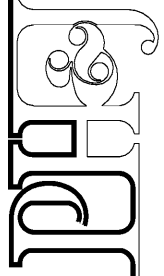
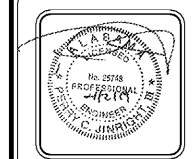


JADJE CONSULTING, LLC  
 208 Greene Road North, Prichard, Alabama 36053  
 P.O. Box 1929, Prichard, Alabama 36053  
 251.928.3444 (cell) 251.928.3605 (fax)  
 CA #41517-B  
 jadjeconsulting.com

architects inc.  
 Montgomery, Alabama



CIP-2017-001  
 UPGRADES TO THE MOBILE COUNTY METRO JAIL  
 For The MOBILE COUNTY COMMISSION  
 MOBILE, ALABAMA



DRAWN	SER	CHECK	PCJ
DATE	April 2, 2019 RTA		
REVISED			
REVISED			
SHEET TITLE			
DRAINAGE PLAN			
BASE BID			
JOB NO.			
PH&J 1801-GV			
SEQUENCE	NO.	OF	TOTAL
15	17	OF	175

C7.0

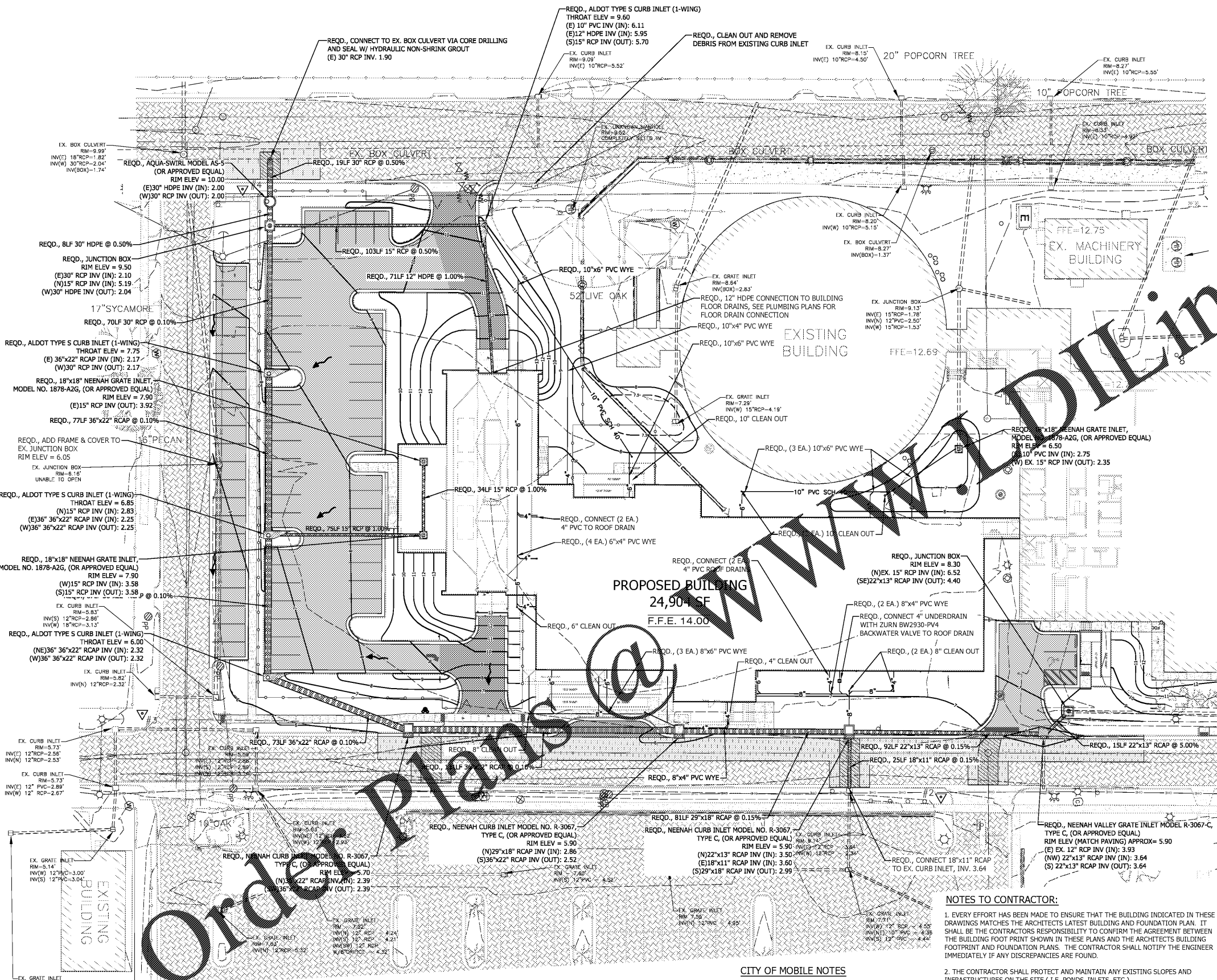
**LEGEND**

	TEMPORARY BENCH MARK
	RIGHT-OF-WAY
	CENTER LINE
	EXIST. OVERHEAD UTILITY AND UTILITY POLE
	EXIST. GUY WIRE AND UTILITY POLE
	EXIST. WATER LINE
	EXIST. SANITARY SEWER LINE
	EXIST. GAS LINE
	EXIST. FENCE LINE
	EXIST. PIPE
	PROPOSED 24' CONCRETE CURB & GUTTER
	EXIST. POWER POLE
	EXIST. LIGHT POLE
	EXIST. ELECTRICAL BOX
	EXIST. ELECTRICAL METER
	EXIST. ELECTRICAL OUTLET
	EXIST. SURVEILLANCE CAMERA
	EXIST. WATER METER
	EXIST. WATER VALVE
	EXIST. WATER WELL
	EXIST. IRRIGATION CONTROL VALVE
	EXIST. BACKFLOW PREVENTOR
	EXIST. FIRE HYDRANT
	EXIST. SANITARY SEWER MANHOLE
	EXIST. SANITARY SEWER CLEANOUT
	EXIST. GREASE TRAP
	EXIST. COMMUNICATION VAULT
	EXIST. COMMUNICATION MARKER
	EXIST. ENTRY KEYPAD/BADGE READER
	EXIST. UNKNOWN VAULT
	EXIST. SIGN
	EXIST. DELINEATION MARKER
	EXIST. MONITORING WELL
	EXIST. LANDSCAPED AREA
	EXIST. GUARDRAIL
	EXIST. SHRUB LINE
	EXIST. LIVE OAK TREE
	EXIST. OAK TREE
	EXIST. PECAN TREE
	EXIST. POPOORN TREE
	EXIST. SYCAMORE TREE
	EXIST. BARTLETT PEAR TREE
	EXIST. CREPE MYRTLE
	EXIST. GAS VALVE
	EXIST. GAS REGULATOR
	EXIST. TELEPHONE BOX
	EXIST. STORM SEWER MANHOLE
	EXIST. ASPHALT PAVING
	EXIST. CONCRETE
	EXIST. GRAVEL
	PROPOSED LIGHT DUTY ASPHALT
	PROPOSED HEAVY DUTY ASPHALT
	PROPOSED ASPHALT PAVEMENT PATCH
	PROPOSED ASPHALT MILL & FILL (135 LB/SY)
	PROPOSED LIGHT DUTY CONCRETE (BROOM FINISH)
	PROPOSED HEAVY DUTY CONCRETE (BROOM FINISH)
	EXIST. 1 FOOT CONTOUR
	EXIST. 5 FOOT CONTOUR
	EXIST. GRADE SPOT ELEVATION
	PROPOSED 1 FOOT CONTOUR
	PROPOSED 5 FOOT CONTOUR
	FINISHED GRADE ELEVATION (TOP OF CURB)
	FINISHED GRADE ELEVATION
	DRAINAGE DIRECTION

- NOTES TO CONTRACTOR:**
- EVERY EFFORT HAS BEEN MADE TO ENSURE THAT THE BUILDING INDICATED IN THESE DRAWINGS MATCHES THE ARCHITECTS LATEST BUILDING AND FOUNDATION PLAN. IT SHALL BE THE CONTRACTORS RESPONSIBILITY TO CONFIRM THE AGREEMENT BETWEEN THE BUILDING FOOT PRINT SHOWN IN THESE PLANS AND THE ARCHITECTS BUILDING FOOTPRINT AND FOUNDATION PLANS. THE CONTRACTOR SHALL NOTIFY THE ENGINEER IMMEDIATELY IF ANY DISCREPANCIES ARE FOUND.
  - THE CONTRACTOR SHALL PROTECT AND MAINTAIN ANY EXISTING SLOPES AND INFRASTRUCTURES ON THE SITE (I.E. PONDS, INLETS, ETC.).
  - CONTRACTOR TO VIDEO ALL EXISTING SEWER AND DRAIN LINES THAT THIS PROJECT CONNECTS TO ENSURE THEY ARE CLEAR AND IN PROPER WORKING ORDER. PROVIDE VIDEO TO THE OWNER.
  - AFTER THE STORM DRAIN SYSTEM IS COMPLETED THE CONTRACTOR SHALL VIDEO THE SYSTEM AND SUBMIT VIDEO TO THE OWNER FOR REVIEW.
  - THE CONTRACTOR SHALL MAINTAIN ACCESS TO THE SITE FOR THE DURATION OF THE PROJECT.
  - ALL EARTHWORK SHALL BE PERFORMED IN STRICT COMPLIANCE WITH GEOTECHNICAL RECOMMENDATIONS.
  - ALL CONDUIT LOCATIONS FOR POWER, TELEPHONE, AND CABLE SHALL BE COORDINATED WITH ELECTRICAL PLANS AND LOCAL UTILITY PROVIDERS.

- CITY OF MOBILE NOTES**
- ALL STORM DRAIN PIPE JOINTS ARE TO BE WRAPPED WITH FILTER CLOTH, SEE DETAIL SHEET C9.0.
  - LIFTING HOLES ARE NOT ALLOWED IN STORM DRAIN PIPE INSTALLED IN THE CITY OF MOBILE RIGHT OF WAY, FILLING THE LIFTING HOLES IS NOT ALLOWED. CONTRACTOR TO NOTIFY THE PIPE MANUFACTURER AHEAD OF TIME THAT THE PROJECT IS WITHIN THE CITY OF MOBILE RIGHT OF WAY.

- SITE GRADING NOTES:**
- ALL DISTURBED AREAS SHALL RECEIVE 4" TOPSOIL, FROM STOCKPILES, PRIOR TO FINAL STABILIZATION.
  - SIDEWALK CROSS-SLOPE 1.5% MAX.



Order Plans @ [www.diline.com](http://www.diline.com)

www.diline.com