

**SURVEYORS NOTES:**

1. THE PROPERTY DESCRIBED HEREON IS SHOWN ON THE FEMA FLOOD INSURANCE RATE MAP NO. 0197C0566 K, DATED 03/17/10, AND IS SHOWN TO BE IN FLOOD ZONE "AE-12".
2. THIS SURVEY DOES NOT REFLECT ANY TITLE OR EASEMENT RESEARCH OTHER THAN WHAT IS READILY VISIBLE ON THE SURFACE OR PROVIDED BY THE CLIENT.
3. ELEVATIONS SHOWN HEREON ARE REFERENCED TO THE NORTH AMERICAN VERTICAL DATUM OF 1988 (NAVD88) AND WERE ESTABLISHED ON-SITE VIA RTK GPS OBSERVATIONS.
4. HORIZONTAL COORDINATES SHOWN HEREON ARE REFERENCED TO STATE PLANE COORDINATES, ALABAMA WEST ZONE, NAD 83 AND WERE ESTABLISHED ON-SITE VIA RTK GPS OBSERVATIONS.
5. BEARINGS SHOWN HEREON ARE STATE PLANE COORDINATE GRID BEARINGS AND ARE NOT GEODETIC BEARINGS. CONVERGENCE ANGLE FROM GRID NORTH TO GEODETIC NORTH IS -00°16'35".

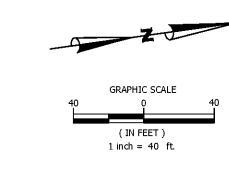
**CITY OF MOBILE NOTES**

1. R.O.W. PERMIT REQUIRES THE CONTRACTOR TO SUBMIT A BOND FOR ALL WORK THAT IS PERFORMED WITHIN THE CITY OF MOBILE RIGHT OF WAY. THE BOND AMOUNT SHALL BE BASED UPON THE TOTAL COST OF THE PROJECT PORTION WITHIN THE CITY OF MOBILE RIGHT OF WAY.
2. CONTRACTOR SHALL CONTACT CITY ENGINEERING DEPARTMENT VIA EMAIL AT LAND.DISTURBANCE@CITYOFMOBILE.ORG AT LEAST 24 HOURS PRIOR TO BEGINNING WORK ON THIS SITE, TO SCHEDULE AN INITIAL ON-SITE BMP INSPECTION WITH THE APPROPRIATE CITY ENGINEERING INSPECTOR. FAILURE TO CONTACT THE CITY ENGINEERING DEPARTMENT PRIOR TO BEGINNING ANY WORK IS A VIOLATION OF THE STORM WATER MANAGEMENT AND FLOOD CONTROL ORDINANCE.
3. THE CONTRACTOR IS RESPONSIBLE FOR ALL DAILY INSPECTION AND CONTINUED MAINTENANCE OF EROSION CONTROL ELEMENTS.

**UTILITY INFORMATION**

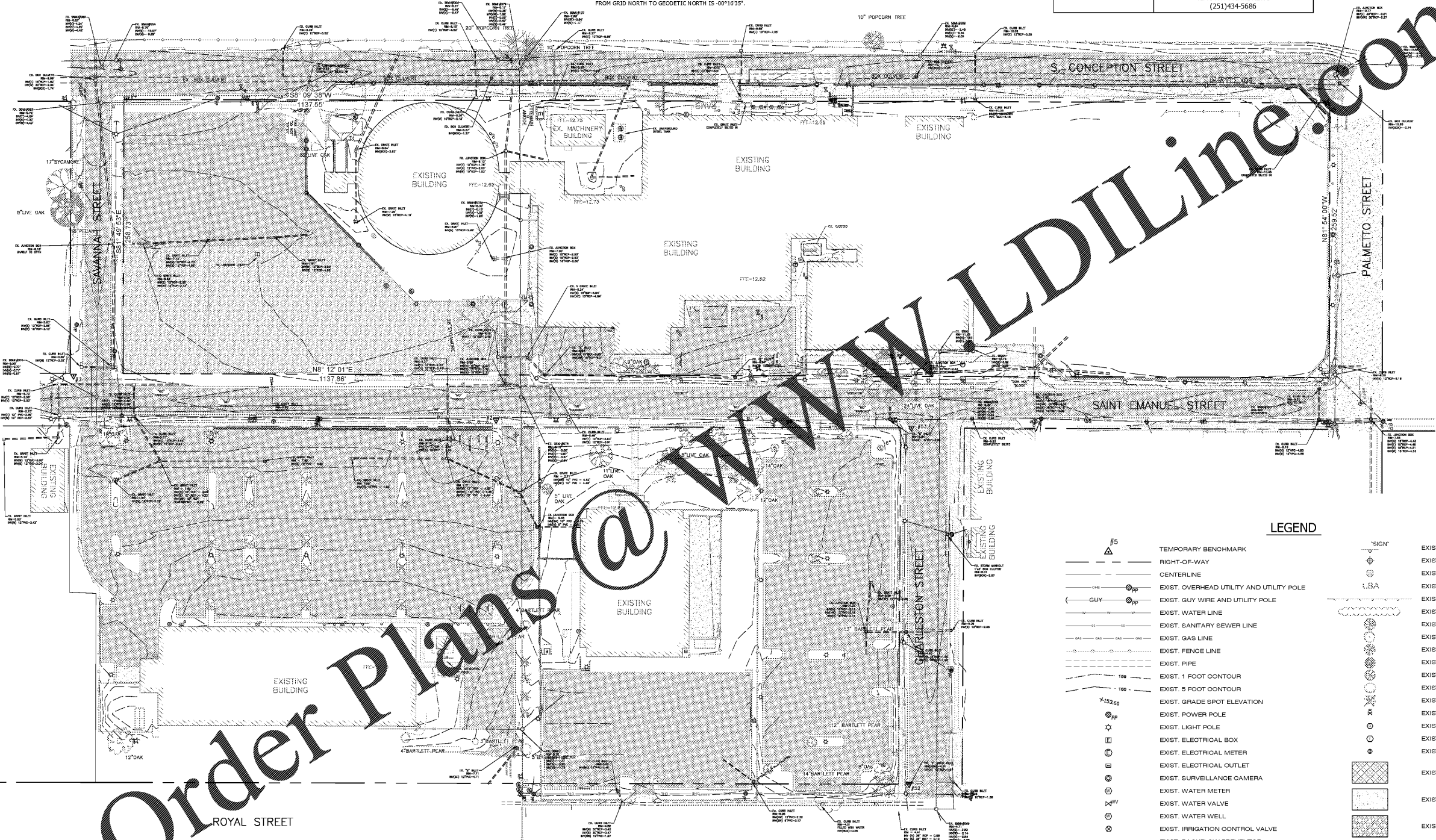
CONTRACTOR SHALL HAVE ALL EXISTING BURIED UTILITIES "LINE SPOTTED" BY CALLING 1-800-292-8525 (811) OR BY CONTACTING LOCAL UTILITY COMPANIES

WATER/SEWER:	MOBILE AREA WATER & SEWER SYSTEM 4725 MOFFETT ROAD, MOBILE, AL, 36618 MELANIE WELLS (251)694-3195
TELEPHONE:	AT&T 2155 OLD SHELL ROAD, MOBILE, AL, 36607 BRAD SADLER (251)470-5650
GAS:	SPIRE ENERGY 2828 DAUPHIN STREET, MOBILE, AL, 36606 JIM BRAY (251)450-4722
POWER:	ALABAMA POWER 6396 AIRPORT BLVD, MOBILE, AL, 36608 TIMOTHY MCANDREWS (251)434-5686



**JADE**  
CONSULTING, LLC  
Jarright & Associates Development Engineers  
208 Greene Road North, Flatbush, Alabama 36632  
P.O. Box 1929, Flatbush, Alabama 36633  
251.928.3443 (vo) 251.928.3005 (fax)  
CA #41517-B  
jadengineers.com

**PH&J architects inc.**  
Montgomery, Alabama



Order Plans @ [www.LDILine.com](http://www.LDILine.com)

**LEGEND**

	TEMPORARY BENCHMARK		EXIST. SIGN
	RIGHT-OF-WAY		EXIST. DELINEATION MARKER
	CENTERLINE		EXIST. MONITORING WELL
	EXIST. OVERHEAD UTILITY AND UTILITY POLE		EXIST. LANDSCAPED AREA
	EXIST. GUY WIRE AND UTILITY POLE		EXIST. GUARDRAIL
	EXIST. WATER LINE		EXIST. SHRUB LINE
	EXIST. SANITARY SEWER LINE		EXIST. LIVE OAK TREE
	EXIST. GAS LINE		EXIST. OAK TREE
	EXIST. FENCE LINE		EXIST. PECAN TREE
	EXIST. PIPE		EXIST. POPOORN TREE
	EXIST. 1 FOOT CONTOUR		EXIST. SYCAMORE TREE
	EXIST. 5 FOOT CONTOUR		EXIST. BARTLETT PEAR TREE
	EXIST. GRADE SPOT ELEVATION		EXIST. CREPE MYRTLE
	EXIST. POWER POLE		EXIST. GAS VALVE
	EXIST. LIGHT POLE		EXIST. GAS REGULATOR
	EXIST. ELECTRICAL BOX		EXIST. TELEPHONE BOX
	EXIST. ELECTRICAL METER		EXIST. STORM SEWER MANHOLE
	EXIST. ELECTRICAL OUTLET		EXIST. ASPHALT PAVING
	EXIST. SURVEILLANCE CAMERA		EXIST. CONCRETE
	EXIST. WATER METER		EXIST. GRAVEL
	EXIST. WATER VALVE		
	EXIST. WATER WELL		
	EXIST. IRRIGATION CONTROL VALVE		
	EXIST. BACKFLOW PREVENTOR		
	EXIST. FIRE HYDRANT		
	EXIST. SANITARY SEWER MANHOLE		
	EXIST. SANITARY SEWER CLEANOUT		
	EXIST. GREASE TRAP		
	EXIST. COMMUNICATION VAULT		
	EXIST. COMMUNICATION MARKER		
	EXIST. ENTRY KEYPAD/BADGE READER		
	EXIST. UNKNOWN VAULT		

**TEMPORARY BENCHMARK DATA**

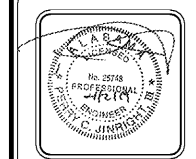
TBM	NORTHING	EASTING	ELEVATION	DESCRIPTION
1	247961.55	1798315.44	7.28	crs cp gps aka g1
2	247688.22	1798274.54	6.81	crs cp aka #g2
3	247299.25	1798177.75	6.01	crs cp aka #g3
4	247385.24	1797925.51	9.78	crs cp aka #g4
52	248026.23	1798669.09	4.33	crf #4 speaks
53	248075.17	1798336.31	5.72	pknf/asph

**EXISTING UTILITIES DISCLAIMER:**  
EXISTING UTILITIES INDICATED ON THESE PLANS ARE BASED ON AVAILABLE INFORMATION. CONTRACTOR IS REQUIRED TO VERIFY LOCATION, BURY DEPTH, SIZE AND MATERIAL TYPE PRIOR TO ANY UTILITY IMPROVEMENTS. THE ENGINEER SHALL BE NOTIFIED IMMEDIATELY OF ANY DISCREPANCIES THAT ARE FOUND.



Survey Provided by:  
**Wattier Surveying, Inc.**  
Professional Land Surveyors  
4321 Downwater Loop N., Suite 201 251-342-2640  
Mobile, Alabama 36609 fax 251-342-2648

CIP-2017-001  
UPGRADES TO THE MOBILE COUNTY METRO JAIL  
FOR THE MOBILE COUNTY COMMISSION  
MOBILE, ALABAMA



DRAWN	SER	CHECK	PCJ
DATE	April 2, 2019 RTA		
REVISED			
REVISED			

SHEET TITLE	EXISTING CONDITIONS
BASE BID	
DWG NO.	PH&J 1801-GV
SEQUENCE	NO. 3 OF 175

**C1.0**  
© PH&J ARCHITECTS, INC.  
ALL RIGHTS RESERVED