



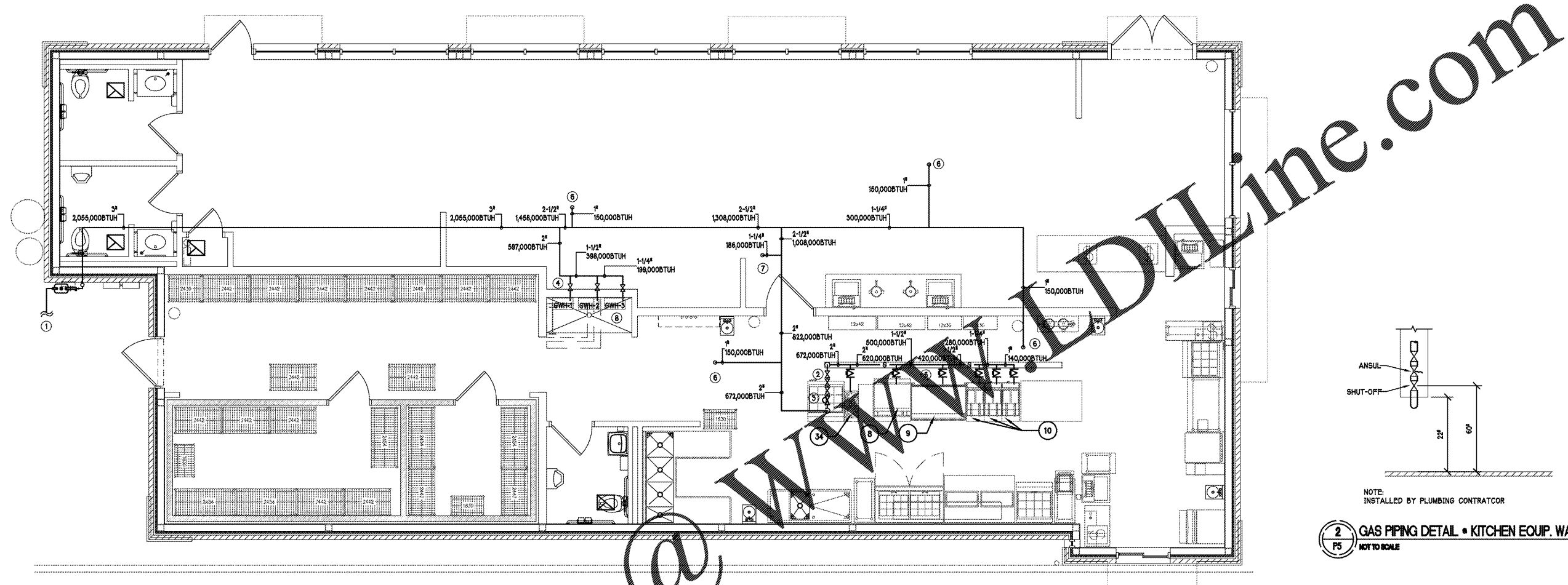
2557 COBBS FORD RD PRATTVILLE, AL 36066

Mk	Date	Description
		Revisions

**GAS PIPING PLAN**

Date: 06/13/19  
 Drawn By: PNK  
 Check By: AWC  
 Job No.: 19-037  
 Sheet:

**P4**



**2** GAS PIPING DETAIL • KITCHEN EQUIP. WALL  
**P5**  
 NOT TO SCALE

**1** GAS PIPING PLAN  
**P4**  
 1/4" = 1'-0"

**GAS PIPING LEGEND**

	GAS PIPING
	GAS BALL VALVE
	GAS PRESSURE REGULATOR
	PIPE UP
	PIPE DOWN
	GAS METER (NEW)

- NOTES:**
- SUPPORT STEEL PIPE AT MAXIMUM OF 8'-0" O.C. FOR 1/2"
  - SUPPORT STEEL PIPE AT MAXIMUM OF 8'-0" O.C. FOR 3/4" & 1"
  - SUPPORT STEEL PIPE AT MAXIMUM OF 10'-0" O.C. FOR 1-1/4" & LARGER.
  - CONTRACTOR TO VERIFY ALL EXISTING PIPING IS SIZED FOR 2 PSI AND MEETS THE VALUES LISTED BELOW FROM THE IFGC AND NFPA 54 TABLES.

**EQUIPMENT SCHEDULE**

MARK	EQUIPMENT	MANUFACTURER	MODEL #
8	CHAR-BROIL STAND (ON CASTERS)	SOUTHBEND & TITAN STAINLESS	HD6-48 & CUSTOM-BUILT
9	STOVE W/ STAND (ON CASTERS)	SOUTHBEND & TITAN STAINLESS	P52N-CC & CUSTOM-BUILT
10	40-50 LB. FRYERS (ON CASTERS)	PITCO FRIALATOR	9616
34	2 BURNER HOT PLATE	VERIFY W/ OWNER/ARCHITECT	VERIFY W/ OWNER/ARCHITECT

**NOTES:**

- OWNER IS RESPONSIBLE TO VERIFY ALL EQUIPMENT SPECIFICATIONS & TYPES PRIOR TO PURCHASE AND INSTALLATION GC TO COORDINATE ALL EQUIPMENT & CONNECTIONS W/ OWNER PRIOR TO PURCHASE & INSTALLATION.
- ALL FOOD SERVICE/KITCHEN EQUIPMENT TO BE UL-LABELED, CLASSIFIED FOR SANITATION & MUST COMPLY WITH LOCAL STATE BUILDING CODES.

**GAS LOAD TABLE**

LOW PRESSURE  
 PRESSURE DROP: 0.5 IN.W.C.  
 STEEL (SCHD. 40)  
 LENGTH: 106 FT  
 FITTINGS FACTOR: 13  
 EQUIVALENT TOTAL LENGTH: 127 FT  
 TDL TABLE LENGTH 150 FT  
 CAPACITY OF PIPES IN MBH

1/2"	40
3/4"	85
1"	157
1-1/4"	322
1-1/2"	482
2"	928
2-1/2"	1480
3"	2610

**NOTE:**  
 GAS PIPING IS SIZED FOR LOW PRESSURE. CONTRACTOR SHALL NOTIFY ARCHITECT IN WRITING IF LOW PRESSURE IS NOT AVAILABLE.

**COMBINED GAS LOAD SUMMARY**

8	120,000 BTU/HR
9	80,000 BTU/HR
10	140,000 BTU/HR
10	140,000 BTU/HR
10	140,000 BTU/HR
34	52,000 BTU/HR
GWH-1	198,000 BTU/HR
GWH-2	198,000 BTU/HR
GWH-3	198,000 BTU/HR
KSF-1	186,000 BTU/HR
RTU-1	150,000 BTU/HR
RTU-2	150,000 BTU/HR
RTU-3	150,000 BTU/HR
RTU-4	150,000 BTU/HR
<b>2,055,000 BTU/HR TOTAL</b>	

- CONSTRUCTION NOTES**
- NEW GAS METER, REGULATOR, AND UNDERGROUND SERVICE BY LOCAL GAS COMPANY. VERIFY EXACT METER LOCATION, TOTAL DEVELOPED LENGTH OF PIPING AND SERVICE PRESSURE BEFORE STARTING WORK. PIPING SIZED FOR 2,055,000 BTU/HR AT 7" W.C. AT 115 FT APPROX. TOTAL DEVELOPED LENGTH. NOTIFY ENGINEER IF LENGTH TO FURTHEST FIXTURE IS GREATER THAN 115 FT.
  - GAS LINE FEEDING GAS COOKING EQUIPMENT UNDER HOOD. PROVIDE EACH PIECE OF GAS FIRED EQUIPMENT WITH A SEPARATE SHUT-OFF AND VENT LIMITING PRESSURE REGULATOR AS REQUIRED.
  - PROVIDE SOLENOID VALVE AND INTERLOCK WITH HOOD FIRE SUPPRESSION SYSTEM TO SHUT-OFF GAS SUPPLY UPON ANY ALARM. PROVIDE MANUAL RESET RELAY IN ACCESSIBLE LOCATION. VERIFY LOCATIONS OF GAS STUB-OUTS WITH EQUIPMENT PRIOR TO INSTALLATION.
  - GAS LINE TO NEW GAS FIRED WATER HEATERS. PROVIDE A SHUT-OFF AND VENT LIMITING PRESSURE REGULATOR AS REQUIRED.
  - PROVIDE REGULATORS AT COOKING EQUIPMENT AS REQUIRED FOR PROPER OPERATION.
  - 1" GAS LINE UP TO ROOFTOP EQUIPMENT. SEE P5 FOR CONTINUATION.
  - 1-1/4" GAS LINE UP TO ROOFTOP EQUIPMENT. SEE P5 FOR CONTINUATION.
  - GAS PIPING ROUTING SHOWN IS FOR CLARITY. P.C. TO COORDINATE EXACT ROUTING AROUND ROOF ACCESS.