

24 HOUR CONTACT  
 JOHN ARMFIELD  
 CONSTRUCTION MANAGER  
 TELEPHONE: (336) 279-3242

**SITE LIGHTING NOTE:**  
 FOR REMODEL/RETROFIT PROJECTS, ALL EXISTING POLE LIGHTS  
 SHOULD BE RETROFITTED WITH LED LIGHTING FIXTURES  
 WHENEVER POSSIBLE

AS REQUIRED BY ALABAMA LAW  
 CALL 2 WORKING DAYS  
 BEFORE EXCAVATION  
 811  
 ALABAMA LINE LOCATION CENTER, INC.

**LIGHTING PROPOSAL LD-148046**

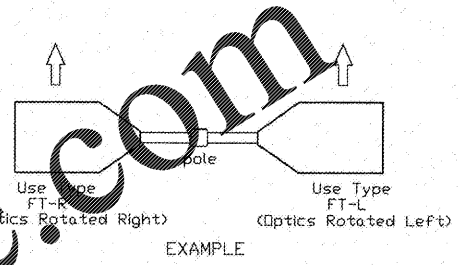
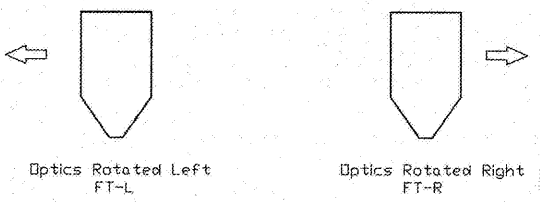
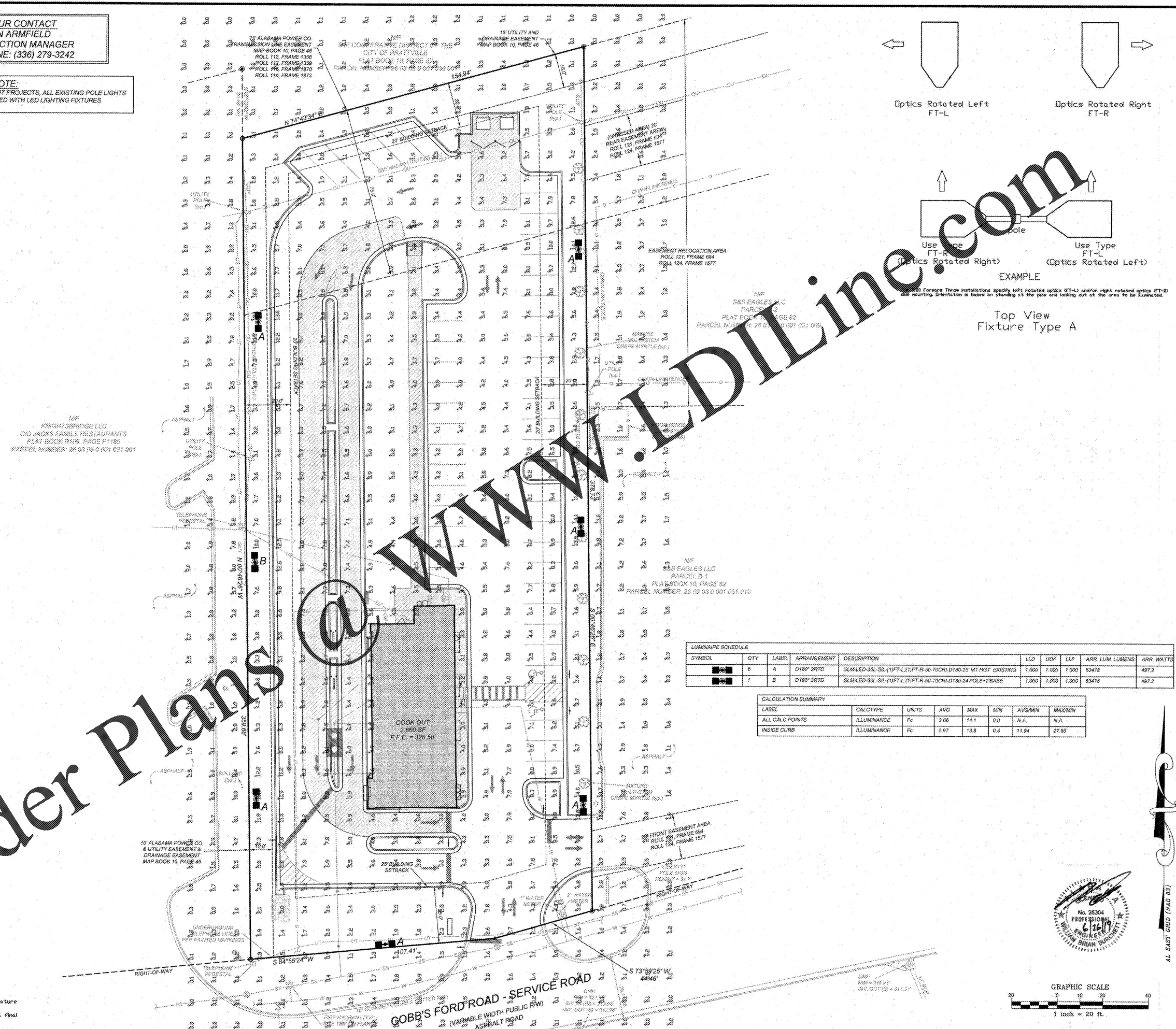
COOKOUT  
 COBBS FORD ROAD  
 PRATTVILLE, AL

DATE: 06-14-20  
 SHEET OF 1

SCALE: 1"=20'

Based on the information provided, all dimensions and luminaire locations shown represent recommended positions. The engineer and/or architect must determine the applicability of the layout to existing or future field conditions.

This lighting plan represents illumination levels calculated from laboratory data taken under controlled conditions in accordance with the Illuminating Engineering Society (IES) approved methods. Actual performance of any manufacturer's luminaires may vary due to changes in electrical voltage, tolerance in lamps/LED's and other variable field conditions. Calculations do not include obstructions such as buildings, curbs, landscaping, or any other architectural elements unless noted. Fixture nomenclature notes does not include mounting hardware or poles. This drawing is for photometric evaluation purposes only and should not be used as a construction document or as a final document for ordering product.



EXAMPLE  
 Top View  
 Fixture Type A

SYMBOL	QTY	LABEL	ARRANGEMENT	DESCRIPTION	LED	LOF	LLF	ARR. LUM. LUMENS	ARR. WATTS
⬢	6	A	D180° 2RTR	SLM-LED-30L-SL-(1)FT-L(1)FT-R-30-70CR-D180-25' MT HGT EXISTING	1,000	1,000	1,000	63478	497.2
⬢	1	B	D180° 2RTD	SLM-LED-30L-SL-(1)FT-L(1)FT-R-50-70CR-D180-24 POLE+PBASE	1,000	1,000	1,000	63478	497.2

LABEL	CALC TYPE	UNITS	AVG	MAX	MIN	AVG/MIN	MAX/MIN
ALL CALC POINTS	ILLUMINANCE	Fc	3.68	14.1	0.0	N/A	N/A
INSIDE CURB	ILLUMINANCE	Fc	5.97	13.8	0.5	11.94	27.60

GRAPHIC SCALE  
 1 inch = 20 ft.

Professional Engineer Seal for John Armfield, License No. 25304, State of Alabama.

NO.	DATE	DESCRIPTION	BY

**COMMERCIAL SITE DESIGN**

CS DESIGN GROUP  
 8877 CREEKWOOD ROAD  
 RALEIGH, NORTH CAROLINA 27613  
 (919) 856-8321, FAX: (919) 868-3741  
 WWW.CSDESIGN.COM

CLIENT OWNER:  
 COOK OUT  
 15 LAURA LANE, SUITE 300  
 THOMASVILLE, NC 27360  
 TELEPHONE: (336) 215-7025  
 FAX: (336) 474-1849

**COOKOUT FRESH HAMBURGERS**  
 2557 COBBS FORD ROAD  
 PRATTVILLE, ALABAMA

PROJECT NO: OUT-1913  
 FILENAME: OUT1913-L1  
 DRAWN BY: DDH  
 SCALE: 1"=20'  
 DATE: 06-07-2019  
 SHEET NO: C-9