

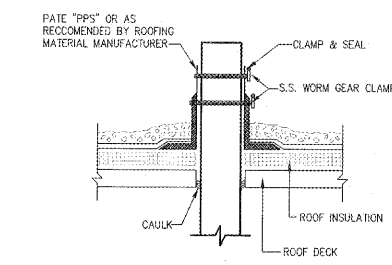
Order Plans @ WWW.DIline.com



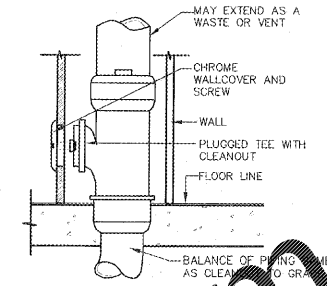
LMHT ENGINEER LICENSE NUMBER - C-1969

PROJECT: **SHERWIN - WILLIAMS**  
 4809 COUNTRY CLUB ROAD  
 SUITE 103  
 WINSTON-SALEM, NC 27104  
 DRAWING: **PLUMBING DETAILS**

Revisions	
REVISION DATE	
PROJECT DATE 6/24/2019	
Drawn By	JCL
Checked By	SDS
Sheet No.	P501



**4 VENT THRU ROOF DETAIL**  
 SCALE: N.T.S.  
 P501



**1 WALL CLEANOUT DETAIL**  
 SCALE: N.T.S.  
 P501

**MIRD INDUSTRIES, INC. ROOFTOP SUPPORT PRODUCTS**

**ACCESSORIES**  
 - 3-R-2 pipe guide  
 - 3-R spacer  
 - Support pad  
 - Etemabond® 2-sided tape

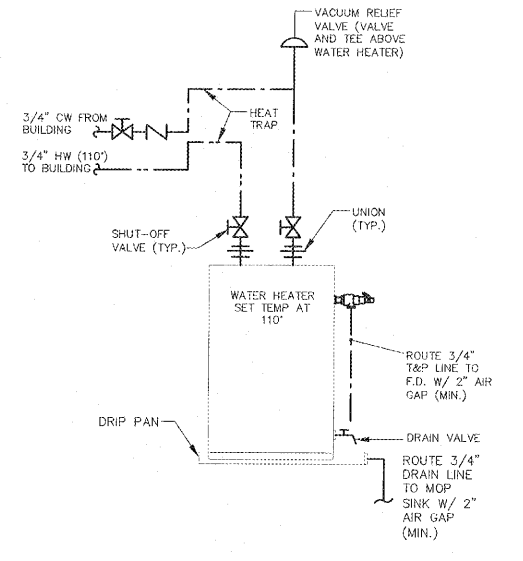
**PRODUCT DESCRIPTION**  
 A "roller-bearing" pipe support used to support roof-mounted gas pipes, electrical conduit, solar piping and other mechanical piping. Unique design absorbs thermal expansion and contraction of pipes thus preventing damage to the roof membrane. Pipes rest on a polycarbonate resin roller and a rod situated in a polycarbonate resin seat.

**KEY INFORMATION**  
 - 3" ID maximum pipe capacity 3-3/4" OD maximum.  
 - Pipe clearance is 2-1/8", even load required, maximum load is 79 lbs.  
 - 24 per case, 26 lbs. per case  
 - Recommended spacing is not to exceed 7 feet centers depending upon the load.  
 - Make certain each pipestand is properly elevated to even load weight at all pipestands.  
 - Base Material: Polycarbonate  
 - Avle and Roller Material: Polycarbonate  
 - 20 Year Warranty

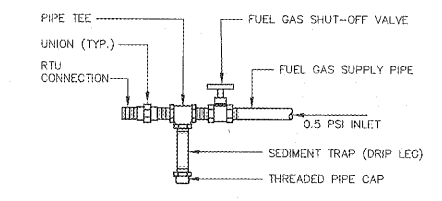
3-R-2

PIPE SUPPORT ON THE ROOF MUST BE IN ACCORDANCE 2012 NORTH CAROLINA FUEL AND GAS CODE SECTION 407.2

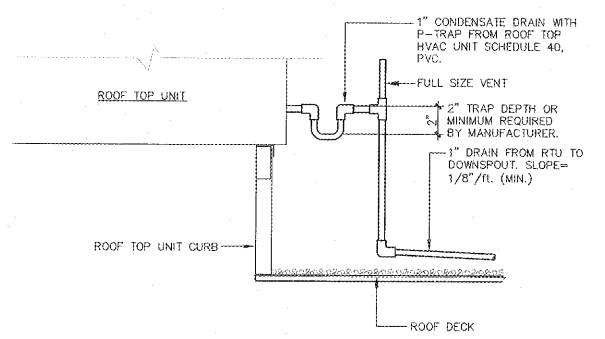
**5 PIPE SUPPORT DETAIL**  
 SCALE: N.T.S.  
 P501



**2 WATER HEATER DETAIL**  
 SCALE: N.T.S.  
 P501



**6 GAS CONNECTION DETAIL**  
 SCALE: N.T.S.  
 P501



**3 CONDENSATE DRAIN DETAIL**  
 SCALE: N.T.S.  
 P501