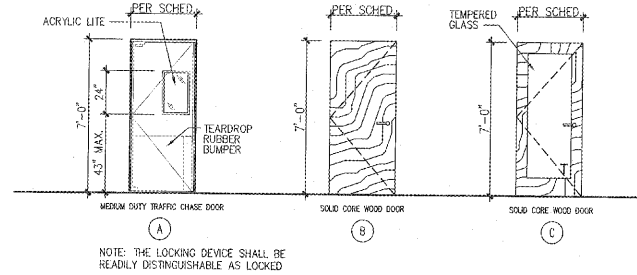


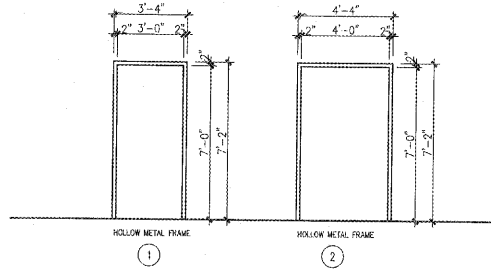
Order Plans @ www.lidline.com

DOOR TYPES

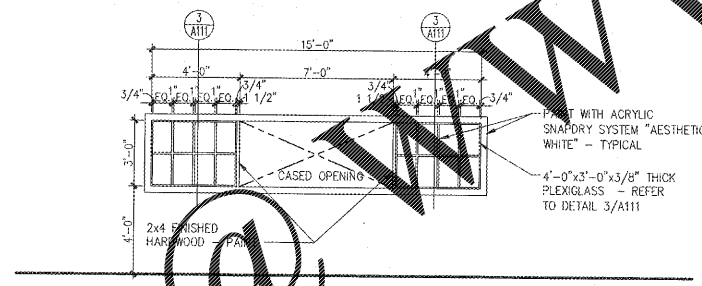


NOTE: THE LOCKING DEVICE SHALL BE HEADLY DISTINGUISHABLE AS LOCKED

DOOR FRAMES



WINDOW FRAMES VIEW FROM OUTSIDE



- GENERAL NOTES**
- DOORS SHALL SWING INTO THE FULLY OPEN POSITION WHEN AN OPENING FORCE NOT TO EXCEED 8.5 POUNDS ON EXTERIOR DOORS, 5 POUNDS ON INTERIOR DOORS, AND 15 POUNDS ON FIRE DOORS IS APPLIED TO THE LATCH SIDE.
 - ALL DOORS TO BE PROVIDED WITH THE BOTTOM 10" WITH A SMOOTH, UNINTERRUPTED SURFACE THAT ALLOWS DOOR TO BE OPENED BY A WHEELCHAIR FOOTREST WITHOUT CREATING A TRAP OR HAZARDOUS CONDITION.
 - CONTRACTOR RESPONSIBLE SUPPLYING, RECEIVING, UNCRATING, INSTALLATION, & CLEAN-UP.
 - ALL DIMENSIONS ARE FOR BIDDING PURPOSES ONLY. CONTRACTOR SHALL VERIFY ALL DIMENSIONS PRIOR TO FABRICATION.
 - FIELD VERIFY ALL ROUGH IN DIMENSIONS FOR WINDOWS AND DOORS PRIOR TO ORDERING.

DOOR AND FRAME SCHEDULE

NUMBER	LOCATION	DOOR				FRAME			DETAILS			HARDWARE SET	REMARKS
		SIZE	TYPE	MATERIAL	FINISH	MATERIAL	TYPE	FINISH	HEAD	JAMB	SILL		
101	MEN	3'-0" x 7'-0"	B	WOOD		HM	1		1/A601	1/A601	-	2	SOLID CORE, FLUSH, BIRCH VENEER
102	WOMEN	3'-0" x 7'-0"	B	WOOD		HM	1		1/A601	1/A601	-	2	SOLID CORE, FLUSH, BIRCH VENEER
103	STAGING	4'-0" x 7'-0"	A	H.M.		HM	2		2/A601	2/A601	-		BURTON TOP-TOE TRIPLE ACTION DOOR W/ EASY OPEN/SHUTTER, 22000 AMBLYE BLUE
104	OFFICE	3'-0" x 7'-0"	C	WOOD		HM	1		1/A601	1/A601	-	1	SOLID CORE, FLUSH, BIRCH VENEER

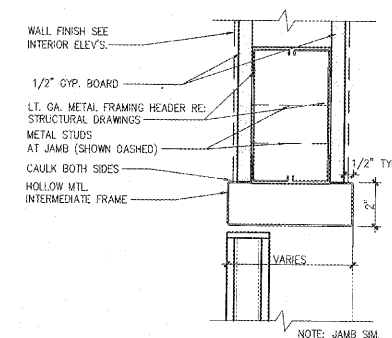
HM = HOLLOW METAL
 PL = PLASTIC LAMINATE
 S.S. = STAINLESS STEEL
 MFR = MANUFACTURER
 * = CONFIRM EXST. HARDWARE SIM TO THAT SPECIFIED. IF NOT, REPLACE W/NEW.

- DOOR SCHEDULE NOTES:**
- UNDERCUT DOOR 1"
 - PROVIDE HEAVY DUTY THRESHOLD. COMPLY WITH ACCESSIBILITY REQUIREMENTS
 - PROVIDE GLASS TRANSOM ABOVE DOOR
 - DOOR THRESHOLD SHALL CONFORM TO ANSI A156.21. MILL FINISH EXTRUDED ALUMINUM EXCEPT AS OTHERWISE SPECIFIED. DOOR THRESHOLD SHALL BE INSTALLED IN A BED OF SEALANT WITH 1/4" - 20 STAINLESS STEEL MACHINE SCREWS AND EXPANSION SHIELDS.
 - WEATHERSTRIPS (INCLUDING POST-INSTALLED) SHALL CONFORM TO ANSI A56.22 AND BE RUBBER VINYL. AIR LEAKAGE SHALL NOT EXCEED 0.50 CFM PER FOOT OF CRACK LENGTH.

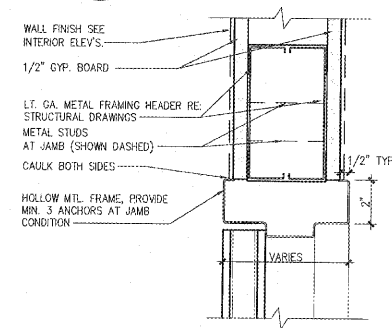
- GENERAL NOTES:**
- CORES SHALL NOT BE REQUIRED TO BE USED ALTHOUGH GRAND MASTER KEY SYSTEM.
 - REKEYING SHALL CONFORM TO THE SHERWIN-WILLIAMS GRAND MASTER KEY SYSTEM.
 - JAMB ANCHORS: LOCK ANCHORS ON JAMBS NEAR TOP AND BOTTOM OF EACH FRAME, AND AT INTERMEDIATE POINTS NOT OVER 24" INCHES. FORM JAMB ANCHORS OF NOT LESS THAN 18 GA. THICK STEEL UNLESS OTHERWISE SPECIFIED.
 - ANCHORS SET IN MASONRY: ADJUSTABLE ANCHORS DESIGNED FOR FRICTION FIT AGAINST THE FRAME AND FOR EXTENSION INTO THE MASONRY NOT LESS THAN 6 INCHES. EMBED ANCHORS IN MORTAR. FILL SPACE BETWEEN FRAME AND MASONRY WALL WITH GROUT OR MORTAR. WALLS ARE BUILT. COAT FRAME BACK WITH A BITUMINOUS COATING PRIOR TO LINING OF GROUT FILLING IN MASONRY WALLS.
 - ANCHORS FOR PARTITIONS: EITHER WELD TO FRAME OR USE LOCK-IN SNAP-IN TYPE. PROVIDE TABS FOR SECURING ANCHOR TO THE SIDES OF THE STUDS. SECURE ANCHORS TO SIDES OF STUDS WITH TWO FASTENERS THROUGH ANCHOR TABS. USE STEEL DRILL SCREWS TO STUDS.
 - ANCHORS FOR FRAMES SET IN PREPARED OPENINGS: HAT SHAPED FORMED STRAP SPACERS, 2 INCHES WIDE, WELDED TO JAMB NEAR STOP. DRILL JAMB STOP AND STRAP SPACERS FOR 1/4" INCH FLAT HEAD BOLTS TO PASS THRU FRAME AND SPACERS.
 - FRAMES SET IN PREPARED OPENING OF MASONRY OR CONCRETE: EXPANSION BOLT TO WALL WITH 1/4" INCH EXPANSION BOLTS THROUGH SPACERS. WHERE SUBFRAME OR ROUGH BUCKS ARE USED, 1/4" EXPANSION BOLTS ON 24 INCH CENTERS OR POWER ACTIVATED DRIVE PINS 24 ON CENTERS. SECURE TWO PIECE FRAMES TO SUBFRAME OR ROUGH BUCK WITH MACHINE SCREWS ON BOTH FACES.

HARDWARE SCHEDULE

SET 1: OFFICE	CONTINUOUS GEARED HINGE OFFICE LOCK WALL STOP SILENCERS	SCHLAGE TUBULAR ND50PD SFIC IVES 407-1/2S GLYNN JOHNSON GJ-64	FINISH: 626 FINISH: 32D
SET 2: RESTROOMS (PRIVACY)	BUTTS PRIVACY LOCK WALL STOP CLOSER SILENCERS	STANLEY FBB179 4 1/2" X 4 1/2" NRP SCHLAGE TUBULAR ND40S IVES 407-1/2S NORTON 1601-BF GLYNN JOHNSON GJ-64	FINISH: 652 FINISH: 626 FINISH: 32D FINISH: AL



2 INTERIOR HEAD DETAIL
SCALE: 3" = 1'-0"

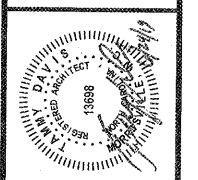


1 INTERIOR HEAD/JAMB DETAIL
SCALE: 3" = 1'-0"

LIMIT Project No. 19120.01

THIS DRAWING IS THE PROPERTY OF THE ARCHITECT AND MAY NOT BE REPRODUCED OR COPIED WITHOUT HIS WRITTEN PERMISSION.

LIMIT ASSOCIATES
 3005 Carver Road, Raleigh, NC 27617
 Phone: 919.874.0002 Fax: 919.874.9339



PROJECT: **SHERWIN-WILLIAMS**
 4809 COUNTRY CLUB ROAD
 SUITE 103
 WINSTON-SALEM, NC 27104

DRAWING: **DOOR + WINDOW HARDWARE SCHEDULE**

Revisions

REVISION	DATE

PROJECT DATE: 6/24/2019
 Drawn By: MTP
 Checked By: TD
 Sheet No. **A601**