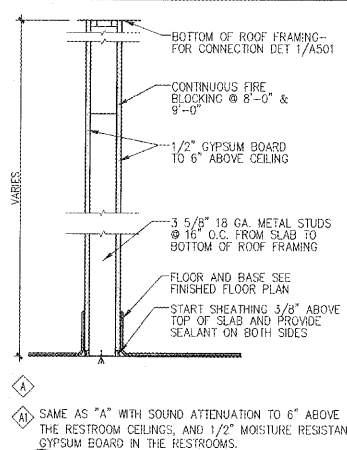
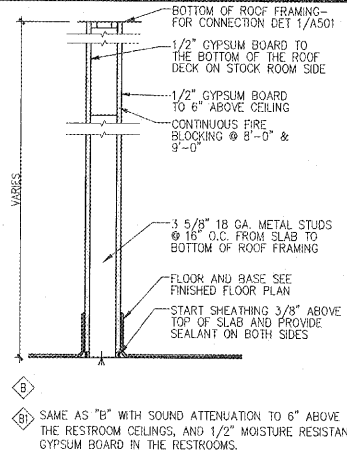


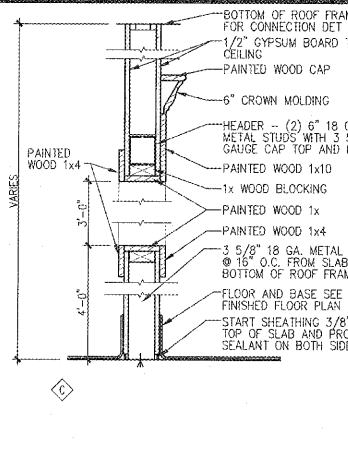
**3 INTERIOR WINDOW DETAIL**  
**A111** SCALE: 3/4" = 1'-0"



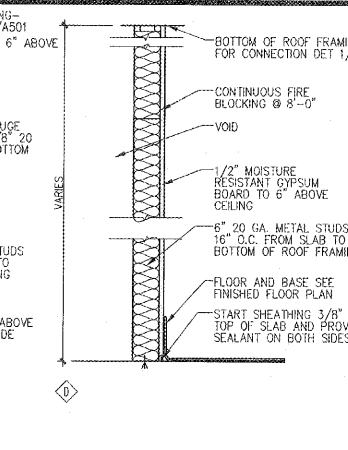
**2 WALL TYPES**  
**A111** SCALE: 1" = 1'-0"



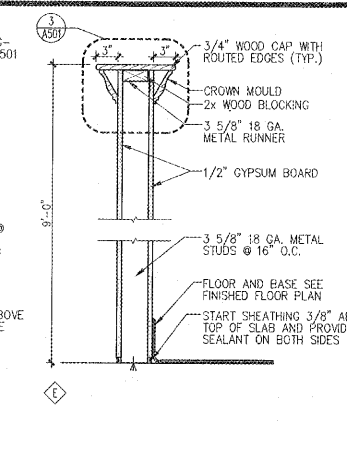
**2 WALL TYPES**  
**A111** SCALE: 1" = 1'-0"



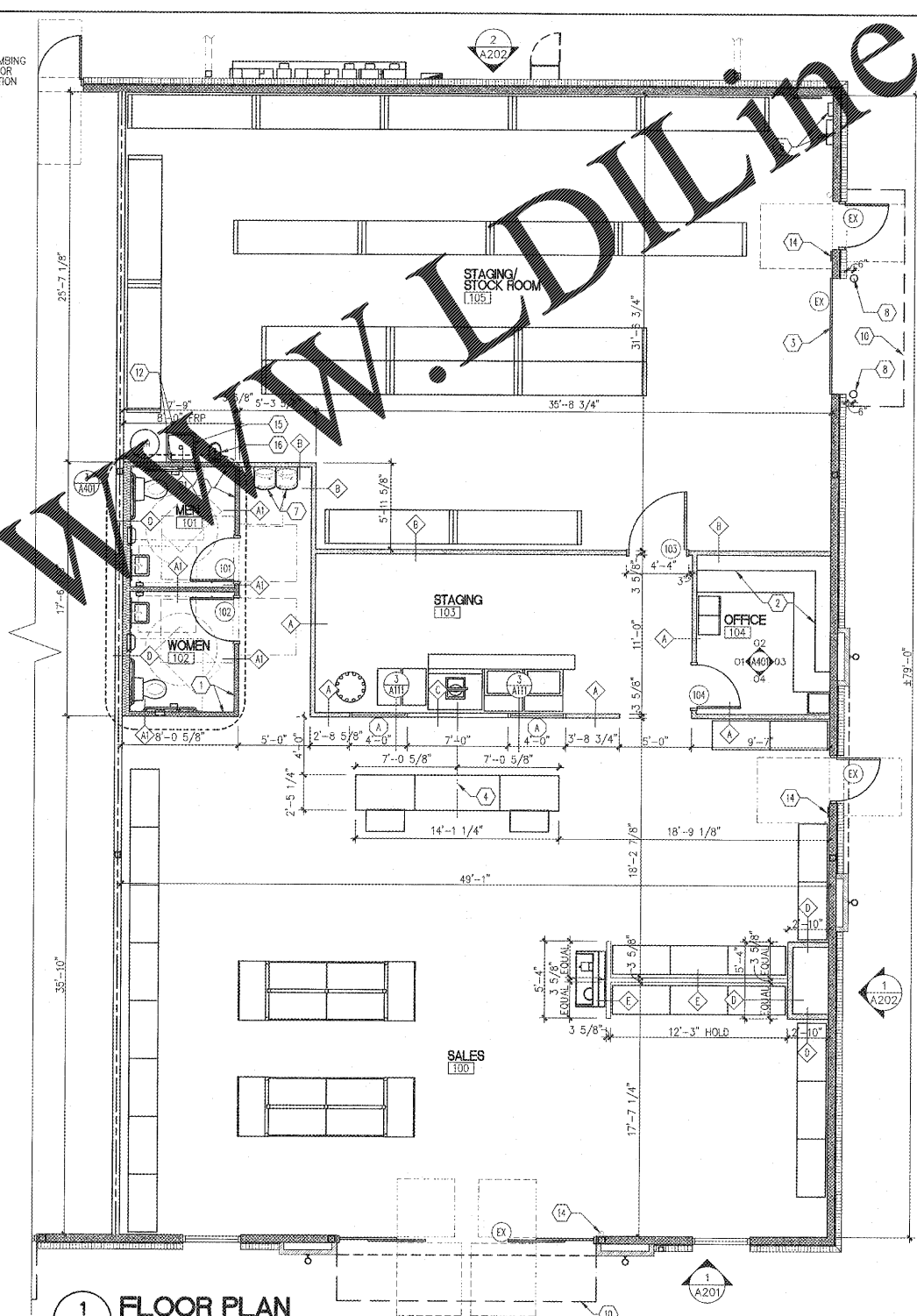
**2 WALL TYPES**  
**A111** SCALE: 1" = 1'-0"



**2 WALL TYPES**  
**A111** SCALE: 1" = 1'-0"



**2 WALL TYPES**  
**A111** SCALE: 1" = 1'-0"



**1 FLOOR PLAN**  
**A111** SCALE: 3/16" = 1'-0"

Order Plans @ [WWW.IDLINE.COM](http://WWW.IDLINE.COM)

LHMT Project No. 19120.01

THIS DRAWING IS THE PROPERTY OF THE PROJECTOR AND WILL NOT BE REPRODUCED OR USED FOR ANY OTHER PROJECT WITHOUT THE PROJECTOR'S PERMISSION.

3005 Carthage Mill Blvd  
Winston-Salem, NC 27104  
Phone: 919.544.0087  
Fax: 919.544.3939

---

### WALL TYPE LEGEND

- EXISTING 6" METAL STUD EXTERIOR WALL - 1/2" OSB SHEATHING ON EXTERIOR FACE OF STUDS - REFER TO EXTERIOR ELEVATIONS FOR FINISH
- EXISTING BRICK VENEER
- EXISTING 2 HOUR TENANT SEPARATION WALL PER UL #419
- NEW METAL STUD FRAMING - SEE GENERAL FINISH NOTES ON SHEET A141
- SOUND ATTENUATION

---

### DIMENSION NOTES:

- 3'-0" TO FACE OF STUD
- 3'-0" MIN. DIMENSIONS ALLOWED (MAY BE MORE)
- 3'-0" MAX. DIMENSIONS ALLOWED (MAY BE LESS)
- CLR. DIST. BETWEEN FINAL FINISHED SURFACES (ALL DIMENSIONS ARE TO FACE OF FRAMING UNLESS OTHERWISE NOTED)
- 1'-0" TARGET DIMENSION WHICH MAY NOT BE ACHIEVED IN FIELD - BE AWARE OF POSSIBLE CHANGE
- ALIGN ALIGN THESE FINISH SURFACES

---

### GENERAL NOTES

1. FOR REFLECTED CEILING PLAN SEE DRAWING A121.
2. FOR DOOR & WINDOW SCHEDULE SEE DRAWING A601.
3. ALL INTERIOR WALLS ARE NON-BEARING.

---

### CONSTRUCTION NOTES

1. INSTALL SOUND ATTENUATION BATT. INSULATION FULL DEPTH OF WALLS FROM FLOOR TO 6" ABOVE HIGHEST CEILING AROUND RESTROOMS.
2. OFFICE SHELVING AND COUNTERS BY THE GENERAL CONTRACTOR - REFER TO ELEVATIONS ON DRAWING A401.
3. EXISTING OVERHEAD ROLL UP DOOR
4. POS COUNTER SHALL BE CENTERED ON WINDOW
5. EXISTING GAS METER-- REFER TO PLUMBING SHEETS FOR EXACT LOCATION.
6. ELECTRICAL METER AND PANELS-- REFER TO ELECTRICAL SHEETS FOR EXACT LOCATION.
7. DOUBLE HEIGHT DRINKING FOUNTAIN. SEE 5/A401 FOR ADA DETAIL.
8. BOLLARD - REFER TO CIVIL PLANS.
9. NOT USED
10. LINE OF EXISTING OVERHEAD CANOPY
11. NOT USED
12. INSTALL WHITE FRP BEHIND WATER HEATER, CAN WASH AND EYE WASHING TO 8'-0" A.F.F.
13. NOT USED
14. TACTILE EXIT SIGN - REFER TO DETAIL 4/A401.
15. 2'-0"x2'-0" STAINLESS STEEL UTILITY SINK. REFER TO PLUMBING DRAWINGS.
16. EYE WASHING STATION - PROVIDED TEMPERED WATER TO EYE STATION. REFER TO PLUMBING DRAWINGS.

---

PROJECT: **SHERWIN-WILLIAMS**  
 4809 COUNTRY CLUB ROAD  
 SUITE 103  
 WINSTON-SALEM, NC 27104

DRAWING: FLOOR PLAN

---

### Revisions

REVISION	DATE

---

PROJECT DATE  
6/24/2019

Drawn By  
MTP

Checked By  
TD

Sheet No.  
**A111**