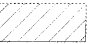



**LEGEND**

 36" WIDE EGRESS PATH (UNDER 50)

 EGRESS TRAVEL PATH

T.E.S. TACTILE EXIT SIGN - SEE DETAIL 4/A401

**SHERWIN WILLIAMS EXIT REQUIREMENTS**

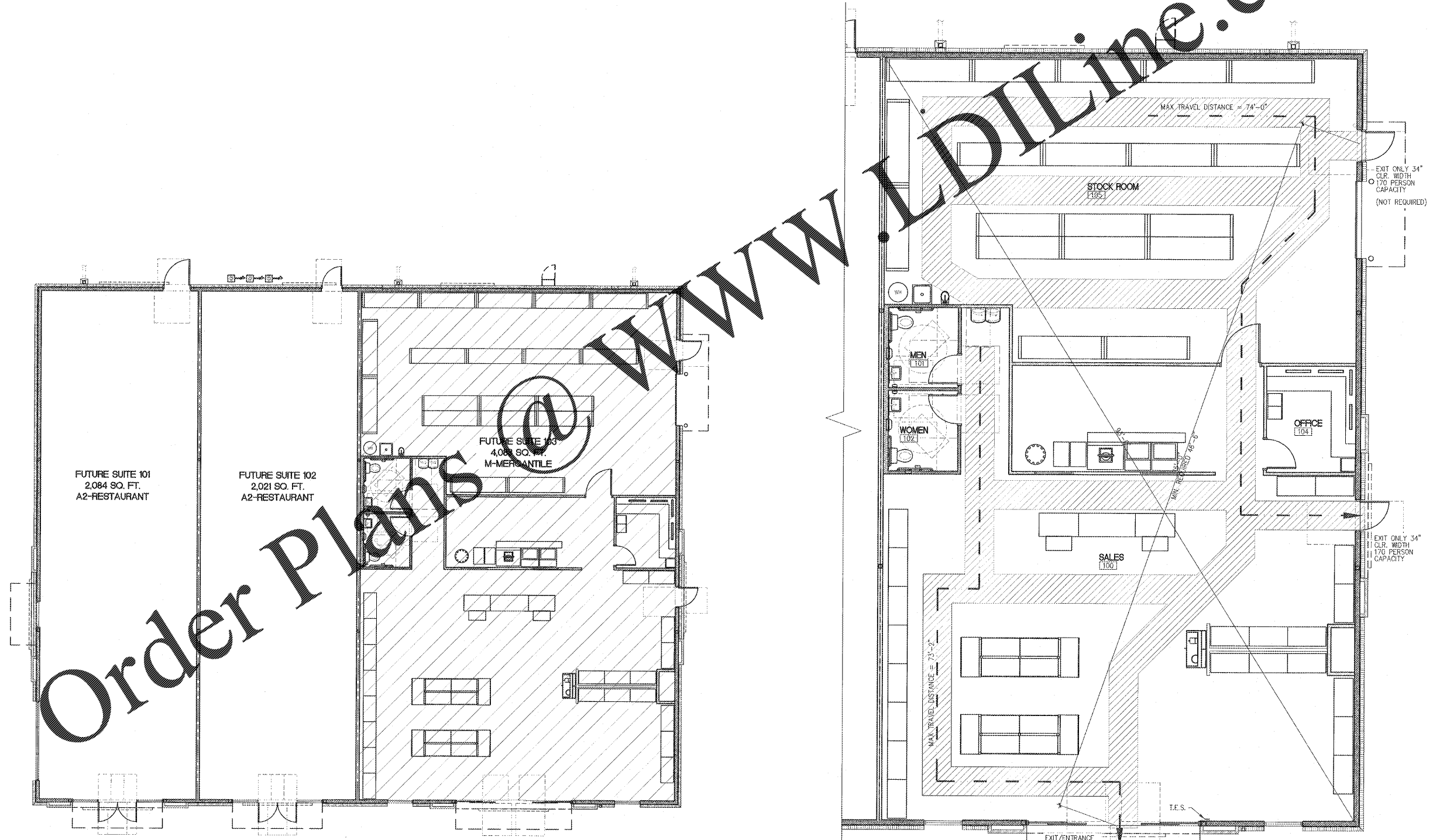
TRAVEL DISTANCE TO EXIT - MAX ALLOWED = 75' ACTUAL = 74'-0" MAX.

EXITS REQUIRED = 2

DISTANCE BETWEEN EXITS - REQUIRED (1/2 DIAGONAL) = 45'-0" ACTUAL = 45'-0"

EXIT WIDTH (0.2 PER OCCUPANT) REQUIRED:  
 42'-0" SIDE THRU FRONT = 4'-4"  
 SIDE THRU FRONT = 4'-7"

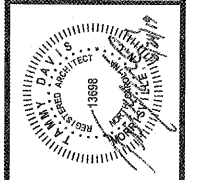
PROVIDED:  
 THRU FRONT = 65"



**2 KEY PLAN**  
 SCALE: 1/8" = 1'-0"  
 8,193 TOTAL SQUARE FOOT SHELL BUILDING  
 BUILDING IS NOT SPRINKLED

**1 LIFE SAFETY PLAN**  
 SCALE: 3/16" = 1'-0"

Order Plans @ WWW.LDILine.com



PROJECT: **SHERWIN - WILLIAMS**  
 4809 COUNTRY CLUB ROAD  
 SUITE 103  
 WINSTON-SALEM, NC 27104  
 DRAWING: LIFE SAFETY PLAN

Revisions	
REVISION DATE	

PROJECT DATE  
 6/24/2019  
 Drawn By  
 MTP  
 Checked By  
 TD

Sheet No.  
**G101**