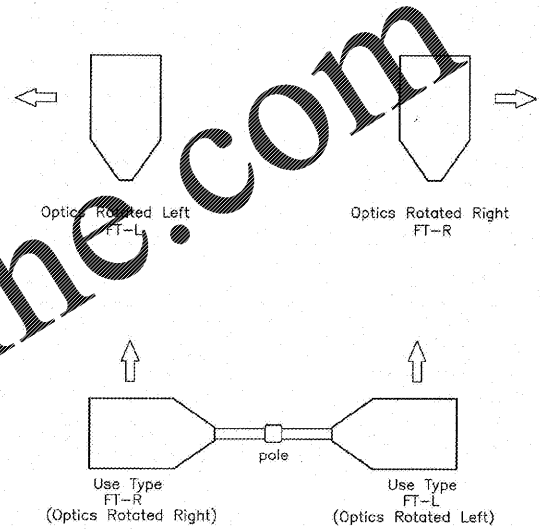
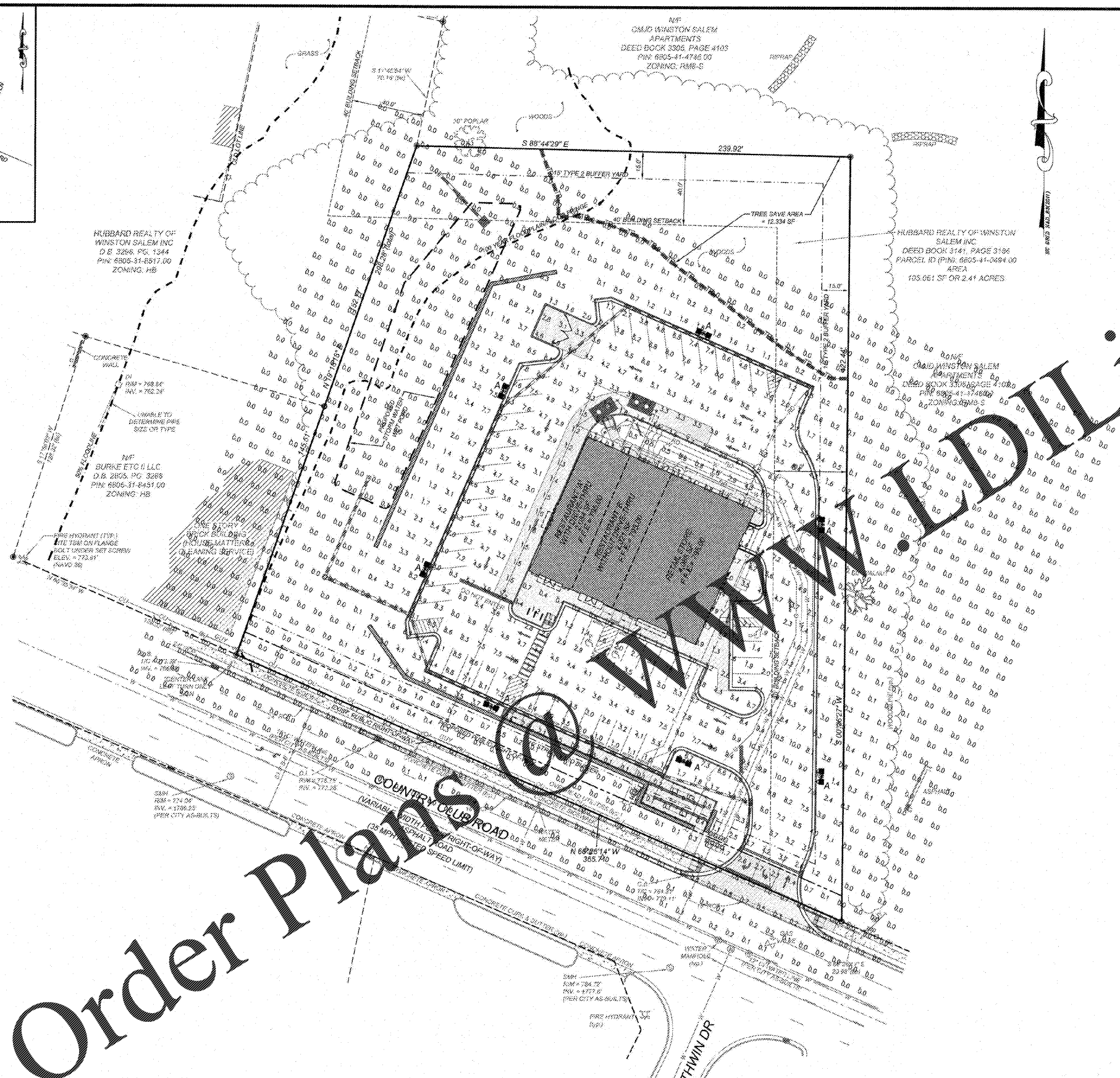


VICINITY MAP
NTS



EXAMPLE
FOR D180 FORWARD THROW INSTALLATIONS SPECIFY LEFT ROTATED OPTICS (FT-L) AND/OR RIGHT ROTATED OPTICS (FT-R)
SEE MOUNTING. ORIENTATION IS BASED ON STANDING AT THE POLE AND LOOKING OUT AT THE AREA TO BE ILLUMINATED.
Top View
Fixture Type A

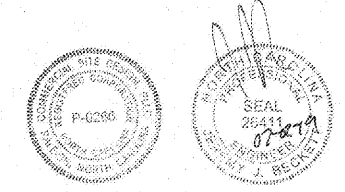
BASED ON THE INFORMATION PROVIDED, ALL DIMENSIONS AND LUMINAIRE LOCATIONS SHOWN REPRESENT RECOMMENDED POSITIONS. THE ENGINEER AND/OR ARCHITECT MUST DETERMINE THE APPLICABILITY OF THE LAYOUT TO EXISTING OR FUTURE FIELD CONDITIONS.

THIS LIGHTING PLAN REPRESENTS ILLUMINATION LEVELS CALCULATED FROM LABORATORY DATA TAKEN UNDER CONTROLLED CONDITIONS IN ACCORDANCE WITH THE ILLUMINATING ENGINEERING SOCIETY (IES) APPROVED METHODS. ACTUAL PERFORMANCE OF ANY MANUFACTURER'S LUMINAIRES MAY VARY DUE TO CHANGES IN ELECTRICAL VOLTAGE, TOLERANCE IN LAMPS/LED'S AND OTHER VARIABLE FIELD CONDITIONS. CALCULATIONS DO NOT INCLUDE OBSTRUCTIONS SUCH AS BUILDINGS, CURBS, LANDSCAPING, OR ANY OTHER ARCHITECTURAL ELEMENTS UNLESS NOTED. FIXTURE NOMENCLATURE NOTED DOES NOT INCLUDE MOUNTING HARDWARE OR POLES. THIS DRAWING IS FOR PHOTOMETRIC EVALUATION PURPOSES ONLY AND SHOULD NOT BE USED AS A CONSTRUCTION DOCUMENT OR AS A FINAL DOCUMENT FOR ORDERING PRODUCT.

Order Plans

Symbol	Qty	Label	Arrangement	Description	LLD	UDF	LLF	Arr. Lum.	Lumens	Arr. Watts
■	7	A	D180 2RTD	SLM-LED-24L-SIL-(1)FT-L; (1)FT-R-50-70CRI-IL-D180-24'POLE+2'BASE	1.000	1.000	1.000	31770		377.6

Label	CalcType	Units	Avg	Max	Min	Avg/Min	Max/Min
ALL CALC POINTS	illuminance	Fc	1.46	11	0.0	N.A.	N.A.
INSIDE CURB	illuminance	Fc	4.97	11	0.5	9.94	22.00



Total Project Watts
Total Watts = 2643.2



LIGHTING PROPOSAL		LO-147030-1	
RETAIL/RESTURANT 4809 COUNTRY CLUB RD WINSTON SALEM, NC			
BY: GEM	DATE: 01-19	REV: 4-04-19	SHEET 1 OF 1
SCALE: 1"=30'		DATE: 01-17-19	

NO.	DATE	DESCRIPTION	BY
1	06-14-19	CITY COMMENTS	JWR
2	06-20-19	UPDATE BUILDING AREAS	RCN
3	06-26-19	CITY COMMENTS #2	JWR

COMMERCIAL SITE DESIGN

8872 CREEDMOOR ROAD
RALEIGH, NORTH CAROLINA 27615
919-486-4024 FAX: 919-486-3741
WWW.LSRESEARCH.COM

CLIENT:
GEMCAP DEVELOPMENT
210 WEST FOURTH STREET
SUITE 200
WINSTON-SALEM, NC 27101

PROJECT NO: GEM-1808
FILENAME: GEM1808-LI
DRAWN BY: RCN
SCALE: 1"=30'
DATE: 01-17-19
SHEET NO: C-11