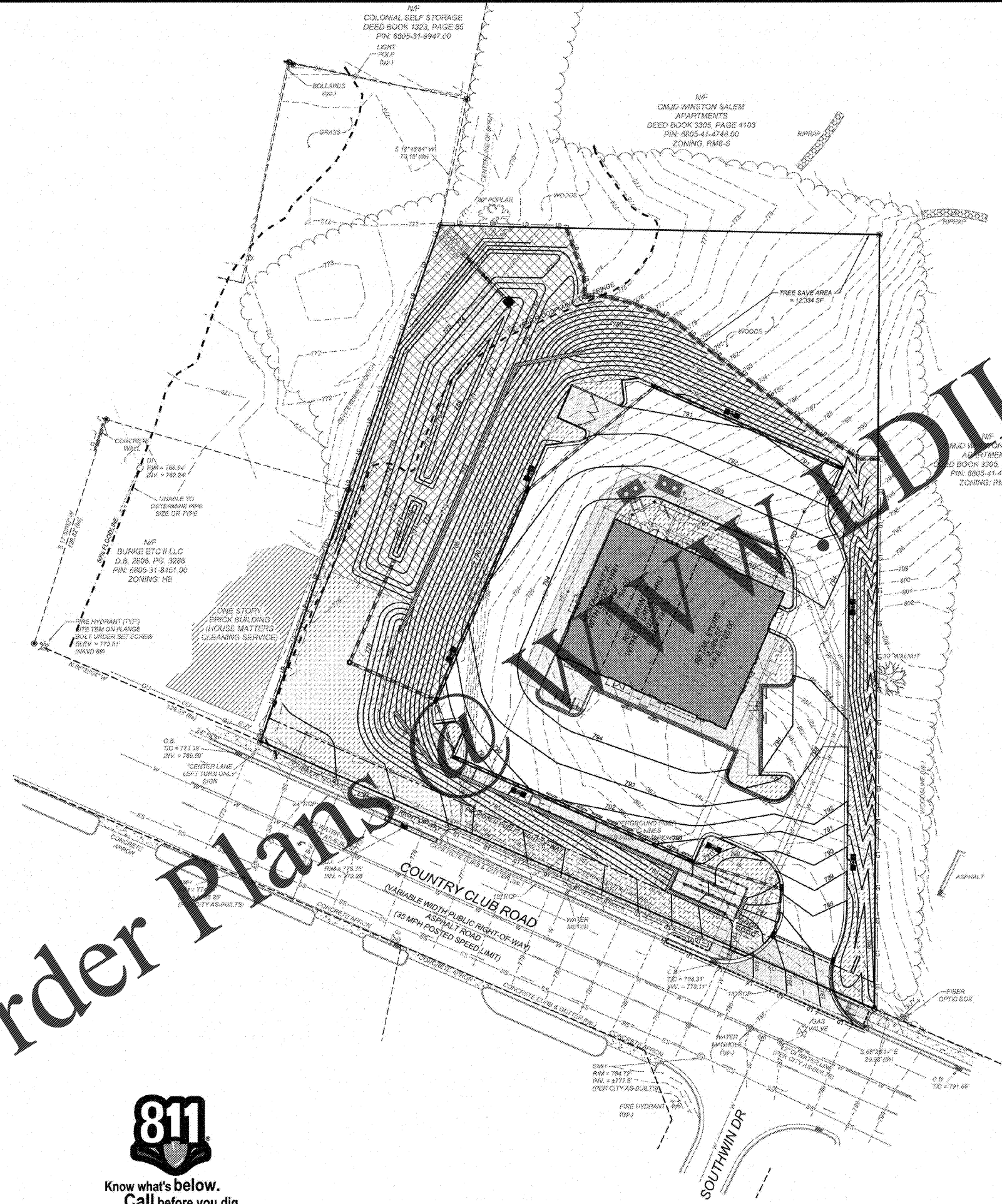


VICINITY MAP
NTS

Order Plans @



Know what's below.
Call before you dig.
nc811.org or 1-800-632-4949



LABEL	GROUND STABILIZATION	STABILIZE WITHIN THIS MANY CALENDAR DAYS AFTER CEASING LAND DISTURBANCE	TIME FRAME VARIATIONS
[Hatched Pattern]	SITE AREA DESCRIPTION	7 DAYS	NONE
[Hatched Pattern]	PERIMETER DIKES, SWALES, DITCHES AND SLOPES	7 DAYS	NONE
[Hatched Pattern]	HIGH QUALITY WATER (HQW) ZONES	7 DAYS	NONE
[Hatched Pattern]	SLOPES STEEPER THAN 3:1	7 DAYS	IF SLOPES ARE 10' OR LESS IN LENGTH AND ARE NOT STEEPER THAN 2:1, 14 DAYS ARE ALLOWED.
[Hatched Pattern]	SLOPES 3:1 TO 4:1	14 DAYS	7 DAYS FOR SLOPES GREATER THAN 50' IN LENGTH AND WITH SLOPES STEEPER THAN 4:1
[Hatched Pattern]	ALL OTHER AREAS WITH SLOPES GREATER THAN 4:1	14 DAYS	7 DAYS FOR PERIMETER DIKES, SWALES, DITCHES, PERIMETER SLOPES AND HQW ZONES 10 DAYS FOR FALLS LAKE WATERSHED 7 DAYS FOR PERIMETER LAKES, SWALES, DITCHES, PERIMETER SLOPES AND HQW ZONES 10 DAYS FOR FALLS LAKE WATERSHED UNLESS THERE IS ZERO SLOPE

SEE SHEET C-3b FOR NPDES STABILIZATION DETAIL SHEET

TOTAL DISTURBED AREA = 2.14 ACRES

LATITUDE: 36°04'53.2709" W
LONGITUDE: 80°20'23.8236" W

SOIL TYPE: PaD - FAIRVIEW FINE SANDY LOAM

WATERSHED: YADKIN - PEE DEE

MAINTENANCE CONTACT INFORMATION: TBD

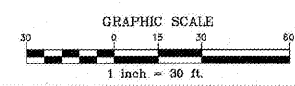
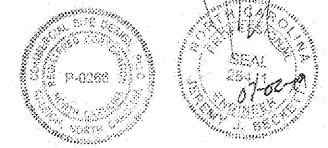
TEMPORARY SEEDING IN NORTH CAROLINA

SEEDING MIXTURE	RATE (lb/acre)
RYE (GRAIN)	120
LATE WINTER & EARLY SPRING	50
SUMMER	40
FALL	120
SEEDING DATES:	
LATE WINTER & EARLY SPRING	MOUNTAINS - ABOVE 2500 ft. FEB. 15 - MAY 15 BELOW 2500 ft. FEB. 1 - MAY 1 PIEDMONT - JUN 1 - MAY 1 COASTAL PLAIN - DEC. 1 - APR. 15
SUMMER	MOUNTAINS - MAY 15 - AUG. 15 PIEDMONT - MAY 1 - AUG. 15 COASTAL PLAIN - APR. 15 - AUG. 15
FALL	MOUNTAINS - AUG. 15 - DEC. 15 COASTAL PLAIN AND PIEDMONT - AUG. 15 - DEC. 30

SOIL AMENDMENTS
FOLLOW RECOMMENDATIONS OF SOIL TESTS OR APPLY 2,000 LBS/ACRE GROUND AGRICULTURAL LIMESTONE AND 750 LBS/ACRE 10-10-10 FERTILIZER

MULCH
APPLY 2,000 LBS/ACRE STRAW. ANCHOR STRAW BY TACKING WITH ASPHALT. NETTING OR A MULCH ANCHORING TOOL. A DISK WITH BLADES SET NEARLY STRAIGHT CAN BE USED AS A MULCH ANCHORING TOOL.

MAINTENANCE
REFERTILIZE IF GROWTH IS NOT FULLY ADEQUATE. RESEED, REFERTILIZE AND MULCH IMMEDIATELY FOLLOWING EROSION OR OTHER DAMAGE.



NO.	DATE	DESCRIPTION
1	06-14-19	
2	06-20-19	
3	06-25-19	

COMMERCIAL SITE DESIGN

882 CREEKWOOD ROAD
RALEIGH, NORTH CAROLINA 27603

(919) 848-4421 FAX: (919) 848-7941
WWW.CSTDESIGN.COM

CLIENT:
GEMCAP DEVELOPMENT
210 WEST FOURTH STREET
SUITE 200
WINSTON-SALEM, NC 27101

RETAIL DEVELOPMENT
4809 COUNTRY CLUB ROAD
WINSTON-SALEM, NORTH CAROLINA

NPDES STABILIZATION PLAN

PROJECT NO.	GEM-1808
FILENAME	NPDES
DRAWN BY	RCN
SCALE	1" = 30'
DATE	01-17-19
SHEET NO.	C-3d

X:\GEM - GEMCAP\1808 - Winston-Salem, NC\CADD\GEM1808-NPDES.dwg 7/1/2019 6:42:51 AM d:\nc\hp Page\W06 A 4006.pcd