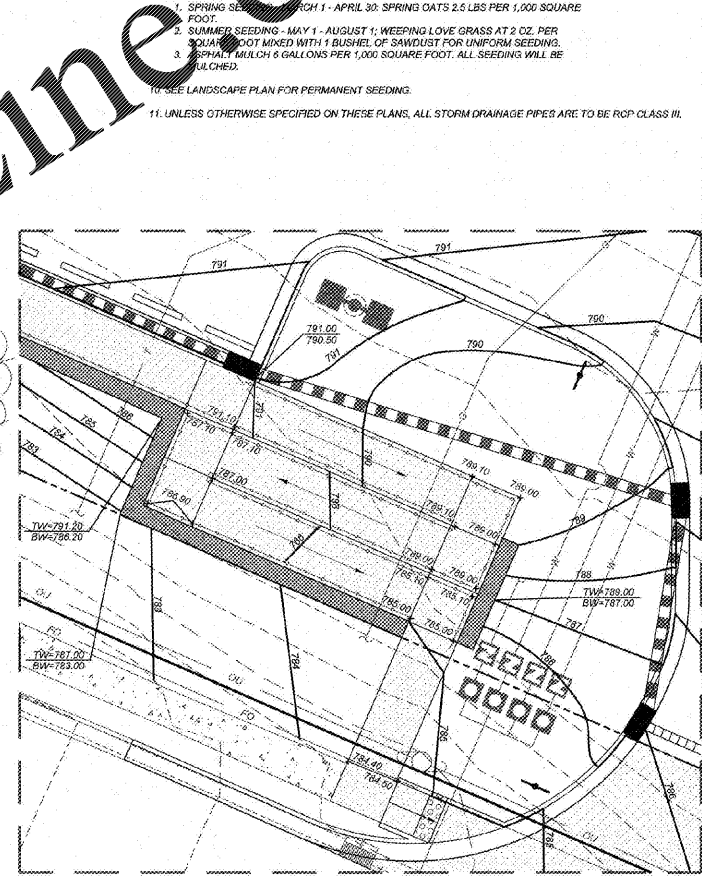
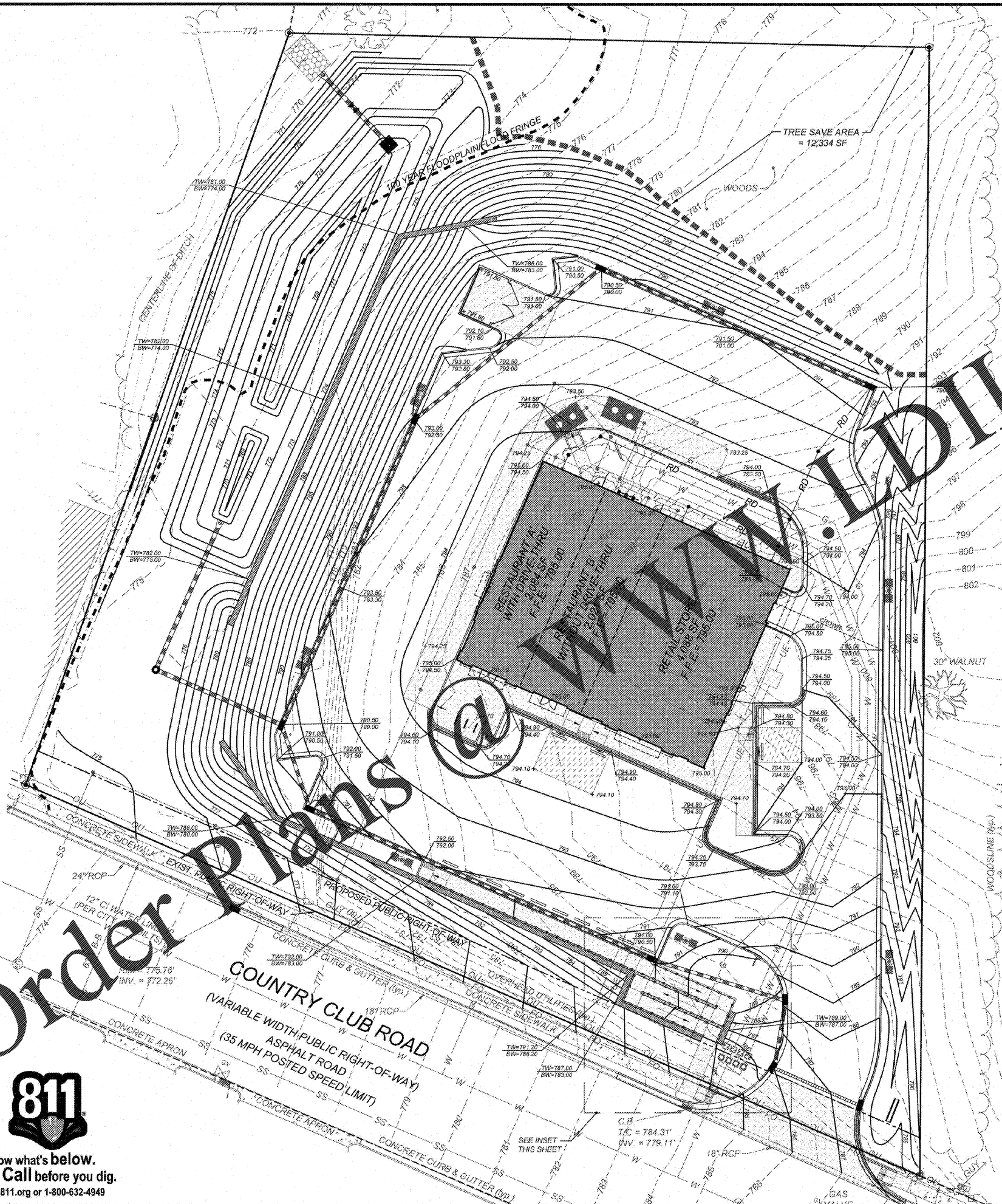


VICINITY MAP
NTS



INSET
SCALE: 1" = 10'

- GRADING NOTES**
1. ALL GRADING, BACKFILLING, EXCAVATION, ETC. SHALL BE IN ACCORDANCE WITH THE RECOMMENDATIONS SET FORTH IN THE GEOTECHNICAL INVESTIGATION REPORTS. REFER TO THESE REPORTS FOR ADDITIONAL INFORMATION NOT TRANSMITTED TO THESE PLANS.
 2. CONTRACTOR IS TO CONTACT MISS UTILITY OF VIRGINIA AT 1-800-852-7061 FOR UNDERGROUND UTILITY LOCATION 48 HOURS PRIOR TO ANY DIGGING.
 3. THE EROSION CONTROL MEASURES ARE TO BE IN PLACE PRIOR TO ANY EARTHWORK.
 4. ALL EROSION CONTROL MEASURES SHALL BE MAINTAINED UNTIL DISTURBED AREAS ARE STABILIZED.
 5. ALL EROSION CONTROL FACILITIES SHALL BE INSPECTED AND REPAIRED AT A MINIMUM OF WEEKLY BASIS AND AFTER EVERY RAIN EVENT.
 6. ALL PAVED AREAS SHALL BE KEPT CLEAR OF EARTH MATERIALS AND DEBRIS. THE SITE SHALL BE MAINTAINED SO AS TO MINIMIZE SEDIMENT-LADEN RUNOFF TO ANY STORM DRAINAGE SYSTEM.
 7. CONTRACTOR SHALL LOCATE AND VERIFY THE LOCATION OF ALL UTILITIES PRIOR TO BEGINNING CONSTRUCTION.
 8. PURSUANT TO G.S. 113A-51(2), THE ANGLE FOR GRADES, CUTS AND FILLS SHALL BE NO GREATER THAN THE ANGLE THAT CAN BE RETAINED BY VEGETATION ADEQUATE EROSION CONTROL DEVICES OR STRUCTURES. IN ANY EVENT, SLOPES SHALL EXPOSED WILL, WITHIN 14 CALENDAR DAYS OF COMPLETION OF ANY PHASE OF GRADING, BE PLANTED OR OTHERWISE PROVIDED WITH TEMPORARY OR PERMANENT GROUND COVER. DEVICES OR STRUCTURES SUFFICIENT TO RESTRAIN EROSION PURSUANT TO G.S. 113A-51(3), PROVIDED, THAT PERMANENT GROUND COVER SUFFICIENT TO RESTRAIN EROSION MUST BE ACCOMPLISHED FOR ALL UNPAVED AREAS WITHIN 15 WORKING DAYS FOLLOWING COMPLETION OF CONSTRUCTION OF THE LOT.
 9. ALL CUT AND FILL SLOPES AND CHANNEL SLOPES WHICH ARE NOT TO BE PAVED, SHALL BE SEEDED UNTIL A GOOD STAND OF GRASS IS OBTAINED IN ACCORDANCE WITH:
 - A. 100 LBS PER 1,000 SQUARE FEET OF TOP SOIL AND LIME STONE OR EQUIVALENT. NO SOIL TEST REQUIRED FOR INITIAL ESTABLISHMENT.
 - B. 20 LBS OF 10-10-10 FERTILIZER OR EQUIVALENT PER 1,000 SQUARE FOOT.
 - C. VARIETIES TO BE SEEDING:
 1. SPRING SEEDING - MARCH 1 - APRIL 30: SPRING OATS 2.5 LBS PER 1,000 SQUARE FOOT.
 2. SUMMER SEEDING - MAY 1 - AUGUST 1: WEEPING LOVE GRASS AT 2 OZ. PER SQUARE FOOT MIXED WITH 1 BUSHEL OF SANDWIST FOR UNIFORM SEEDING.
 3. ASPHALT MULCH 4 GALLONS PER 1,000 SQUARE FOOT. ALL SEEDING WILL BE MULCHED.
 10. SEE LANDSCAPE PLAN FOR PERMANENT SEEDINGS.
 11. UNLESS OTHERWISE SPECIFIED ON THESE PLANS, ALL STORM DRAINAGE PIPES ARE TO BE RCP CLASS III.

GRADING LEGEND

- TP — TREE PROTECTION FENCE
- LD — LIMITS OF DISTURBANCE
- F — FLARED END SECTION
- DROP INLET
- CURB INLET
- S — STORM PIPE
- T — TOP OF CURB
- B — BOTTOM OF CURB
- H — HANDICAP AREA (2% MAX. SLOPE)
- SC — SPILL CURB
- TW/XXX.XX — GROUND AT TOP OF WALL
- BW/XXX.XX — GROUND AT BOTTOM OF WALL
- I — INLINE DRAIN
- RD — ROOF DRAIN
- C — CONCRETE
- P — PLASTIC
- S — SAND COVER
- 12" — 12" MIN. SIZE
- PVC — PVC AT TRAFFIC AREAS
- CLEAN — CLEANED LOCATED @ ALL BENDS

Order Plans



Know what's below.
Call before you dig.
nc811.org or 1-800-632-4949

NO.	DATE	DESCRIPTION	BY
1	05-14-19	CITY COMMENTS	JWR
2	05-20-19	UPDATE BUILDING AREAS	RCN
3	05-28-19	CITY COMMENTS #2	JWR

**COMMERCIAL
SITE DESIGN**

811 DESIGN GROUP
RALEIGH, NORTH CAROLINA 27605
(919) 848-8222 FAX: (919) 848-9941
WWW.CSDESIGNGROUP.COM

CLIENT:
GEMCAP DEVELOPMENT
210 WEST FOURTH STREET
SUITE 200
WINSTON-SALEM, NC 27101

RETAIL DEVELOPMENT
4809 COUNTRY CLUB ROAD
WINSTON-SALEM, NORTH CAROLINA
DETAILED GRADING PLAN

PROJECT NO.	GEM-1808
FILENAME	GEM1808-DTGP
DRAWN BY	RCN
SCALE	1" = 20'
DATE	01-17-19
SHEET NO.	C-3a

