

MATERIAL SCHEDULE

ALL INTERIOR FINISHES TO MEET REQUIREMENTS OF NCSBC CHAPTER 8 AND FLAME SPREAD RATINGS IN TABLE 803.9.

KEY	DESCRIPTION	MANUFACTURER	NAME	NUMBER	COLOR	SIZE	FINISH	KEY NOTES	CONTACT INFORMATION
CONC-1	SEALED CONCRETE				CLEAR			NOTE 8	
CPT-1	CARPET	PATCRAFT	TRANSVERSE	8520	00175 CORNICE	24"x32" TILE	NA	NOTE 1	BROOKE BURTON 864-395-1273
RB-1	RUBBER BASE	ALLSTATE		A93				NOTE 4	
RB-2	RUBBER BASE	ROPPE		174	SMOKE			NOTE 4	
WT-1	WALL TILE	TRINITY TILE	ZION		PUMICE	3"x11 1/2" VERTICAL HEX	GLOSSY	NOTE 5	ERICA THOMAS 680-333-9352
PLAM-1	PLASTIC LAMINATE	FORMICA		918-58	NEUTRAL WHITE	SHEET	MATTE	NOTE 9	SHERI REID 704-334-7300
PLAM-2	PLASTIC LAMINATE	FORMICA		837-58	GRAPHITE	SHEET	INFINITY	NOTE 9	SHERI REID 704-334-7300
SSM-1	QUARTZ	METROQUARTZ		M4607	LATTE		HONED	NOTE 10	BONNE STURKEY 704-591-2132 / MICHELE HUMMER SMITH 704-906-2424
SSM-2	QUARTZ	METROQUARTZ		M8021	FORTRESS		HONED	NOTE 10	BONNE STURKEY 704-591-2132 / MICHELE HUMMER SMITH 704-906-2424
PNT-1	PAINT	BENJAMIN MOORE	(WHITE)	OC-22	CALM	EGGSHELL		NOTE 2	FIELD PAINT
PNT-2	PAINT	SHERWIN WILLIAMS	(FRENCH GRAY)	7673	PEWTER CAST	EGGSHELL		NOTE 2 & 3	ACCENT WALL
PNT-3	PAINT	SHERWIN WILLIAMS	(ORANGE)	6883	RAUCOUS ORANGE	EGGSHELL		NOTE 2	COPY RM ACCENT
PNT-4	PAINT	SHERWIN WILLIAMS	(WHITE)	OC-22	CALM	DRYFALL		NOTE 2	STRUCTURE, INCLUDING COLUMNS
PNT-5	PAINT	SHERWIN WILLIAMS	(WHITE)	OC-22	CALM	FLAT		NOTE 2	GWB CEILING, ON TOP OF GWB
PNT-6	WRITABLE PAINT	IDEA PAINT			CLEAR				
VVC-1	VINYL WALLCOVERING	MILTON AND KING	PLUS SIGN		BLACK			NOTE 11	https://www.miltonandking.com/product/plus-sign-wallpaper/
ACT-1	ACOUSTICAL CLING TILE	ARMSTRONG	OPTIMA REGULAR		WHITE	24"x24"		NOTE 7	ANGELA DUNPHY 704-363-4979
WD-1	RECLAIMED WOOD	RECLAIMED DESIGNWORKS	BARNWOOD		PREFINISHED DISTRESSED GRAY	4" 1/2" X 2 1/2" MIX			
WD-2	RECLAIMED WOOD	RECLAIMED DESIGNWORKS	TIMBER TILES		UNION WOOD	4" X 4" X 1/4" X 8" MIX			

FINISH SCHEDULE

NO.	ROOM NAME	FLOOR	BASE	WALLS	CEILING	KEYED NOTES	NO.
300	RECEPTION	CONC	RB-1	PNT-1/WD-1	EXPOSED STRUCT		300
301	CONFERENCE ROOM	CPT-1	RB-1/2	PNT-1/2	ACT-1		301
302	COPY ROOM	CONC	RB-1	VVC-1	ACT-1		302
303	CONFERENCE ROOM	CPT-1	RB-1	PNT-1	ACT-1		303
304	WELLNESS	CPT-1	RB-1	PNT-1	ACT-1		304
305	PHONE ROOM	CPT-1	RB-1/2	PNT-1/2	ACT-1		305
306	STORAGE/SERVER	CONC	RB-1	PNT-1	ACT-1		306
307	INFORMAL CONF ROOM	CPT-1	RB-1/2	PNT-1/2/B	EXPOSED STRUCT		307
308	BREAK ROOM	CONC	RB-1/2	PNT-1/2/B/NT-1/WD-2	EXPOSED STRUCT		308
309	OPEN OFFICE	CONC/CPT-1	RB-1/2	PNT-1/2	EXPOSED STRUCT		309
310	OFFICE	CPT-1	RB-1	PNT-1/3	ACT-1		310
311	OFFICE	CPT-1	RB-1	PNT-1/3	ACT-1		311
312	OFFICE	CPT-1	RB-1	PNT-1/3	ACT-1		312

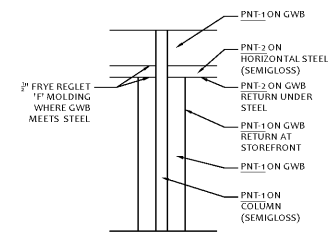
GENERAL FINISH NOTES

- GC SHALL PROVIDE ALL NEW INTERIOR FINISHES.
- TRANSITIONS BETWEEN DISSIMILAR FLOOR MATERIALS TO OCCUR AT DOOR WHEN DOOR IS IN CLOSED POSITION. IF NO DOOR, TRANSITION TO BE IN CENTER OF CASED OPENING OR AS NOTED ON PLAN.
- ALL SURFACES RECEIVING PAINT, VARNISH, OR WALLCOVERING SHALL BE PREPARED ACCORDING TO MANUFACTURER'S SPECIFICATIONS FOR APPLIED FINISH PRIOR TO INSTALLATION OR APPLICATION OF FINISH MATERIAL.
- GC TO REMOVE OR PROTECT ADJACENT ELEMENTS, FINISHES, COVER PLATES, FURNITURE, ETC. FROM APPLIED FINISHES. GC SHALL BE RESPONSIBLE FOR REMOVING PAINT ADHESIVE OR FINISH FROM ANY ITEM NOT SPECIFICALLY IDENTIFIED TO RECEIVE APPLIED FINISH.
- PAINT INSTALLATION SHALL CONSIST OF MIN. ONE COAT OF PRIMER AND MIN. TWO COATS OF FINISH PAINT TO PRODUCE A SATISFACTORY FINISH APPEARANCE. INSTALLATION OF ALL PAINT MATERIALS SHALL BE IN ACCORDANCE WITH MANUFACTURER'S SPECIFICATIONS.
- GC SHALL BE RESPONSIBLE FOR COMPLYING WITH VOLATILE ORGANIC COMPOUND (VOC) LIMITS FOR FINISH MATERIALS.
- ALL FLOORING MATERIALS SHALL BE INSTALLED ACCORDING TO MANUFACTURER'S SPECIFICATIONS. INSTALLATION SHALL BE FREE OF ABRASION, BUBBLES, CRACKS, AND OTHER IMPERFECTIONS. SEAMING SHALL BE VISIBLY CONCEALED.
- REFERENCE ALSO INTERIOR ELEVATION SHEETS FOR EXTENSIVE FINISHES.
- PROVIDE SAMPLES AND INSTALL PATTERNS FOR ALL FINISHES, INCLUDING STRUCTURE, FOR APPROVAL BY ARCHITECT AND DESIGNER PRIOR TO ANY WORK BEGINNING OR MATERIAL BEING ORDERED.
- NOT ALL WALL OR MILLWORK FINISHES ARE INDICATED ON THE FINISH PLAN OR IN THE FINISH SCHEDULE; REFERENCE ALSO INTERIOR ELEVATIONS AND SECTIONS.

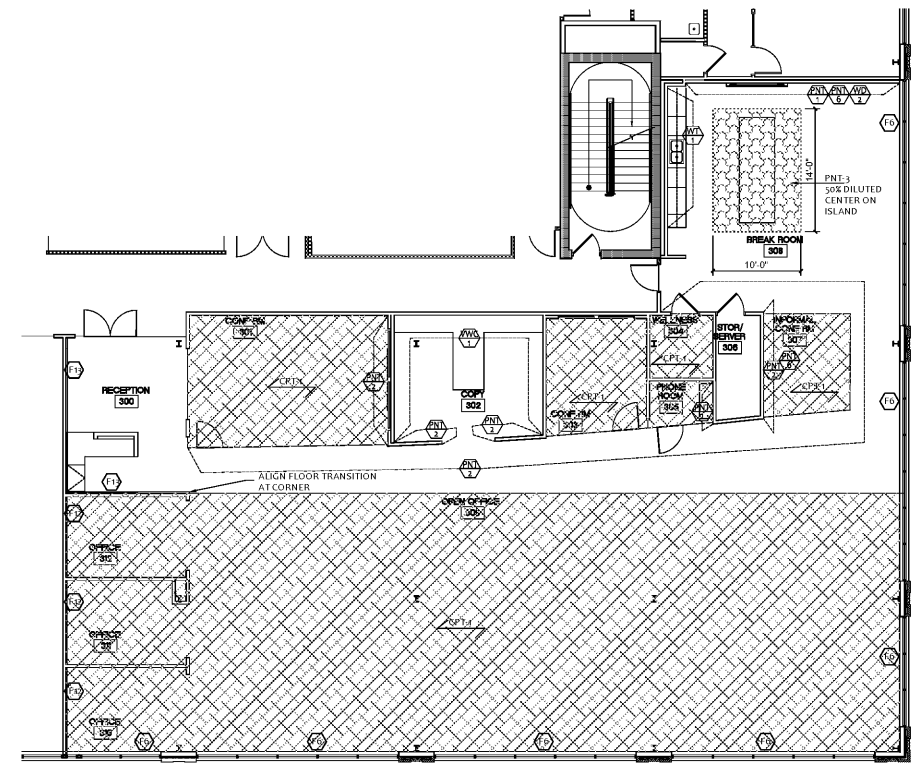
FINISH PLAN KEY NOTES

- MONOLITHIC INSTALLATION
- PAINT SHEEN SHALL BE EGG SHELL ON WALLS, FLAT OR DRYFALL ON ALL CEILINGS, SEMI GLOSS ON ALL DOOR AND DOOR FRAMES, REFERENCE ALSO FINISH SCHEDULE. V. STAIN, IF USED, TO BE SATIN FINISH UNLESS NOTED OTHERWISE
- REFERENCE ELEVATIONS FOR MONOLITHIC STEEL PAINT COLOR (SEMI GLOSS FINISH)
- NICHE AT WALLS THAT MEET CARPET; COVE AT WALLS THAT MEET CONCRETE. RB-1 ON WALLS WITH PNT-1 AND RB-2 ON WALLS WITH RB-2
- POINT TO BE AT TOP OF TILE INSTALL; GROUT TO BE MAPEI EPOXY #47 CHARCOAL
- SEE DETAIL 201 FOR STEEL PAINT DETAIL
- 1/2" SUBMITTIVE GRID, WHITE
- 1/2" SLIP SEALER, MATTE FINISH
- PLAM-1 ON UPPER CABINETS AT BREAK 308 AND AT COUNTER AT COPY ROOM 302; PLAM-2 ON BASE CABINETS AT BREAK 308 AND COPY 302 AND OPEN SHELVING BASE CABINETS IN COPY 302
- SSM-1 AT BREAK COUNTERS; SSM-2 AT BREAK ISLAND
- PROVIDE ALTERNATE PRICE WITH RICHIA GRAPHICS TO DO A CUSTOM PATTERN WITH ORANGE PLUSSES IN LIEU OF BLACK
- PROVIDE PNT-3 ALL SIDES OF RECESSED NICHE
- PROVIDE WD-1 REAR WALL ONLY OF RECESSED NICHE

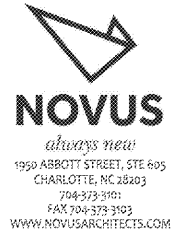
Order Plans @ www.lidvine.com



2 EXTERIOR STEEL HEADER PAINT DETAIL TYP SCALE: 1/4"=1'-0"



1 FINISH PLAN SCALE: 1/8"=1'-0"



BR+A
300 West Summit
Office Bldg

300 West Summit Ave.
Suite #310
Charlotte, NC 28203

PROJECT NUMBER: 19-018
CONSTRUCTION ISSUE: 6.20.2019
CLARIFICATIONS 2019.07.03

FINISH PLAN,
SCHEDULE, NOTES
& MATERIAL
SCHEDULE

A9.01