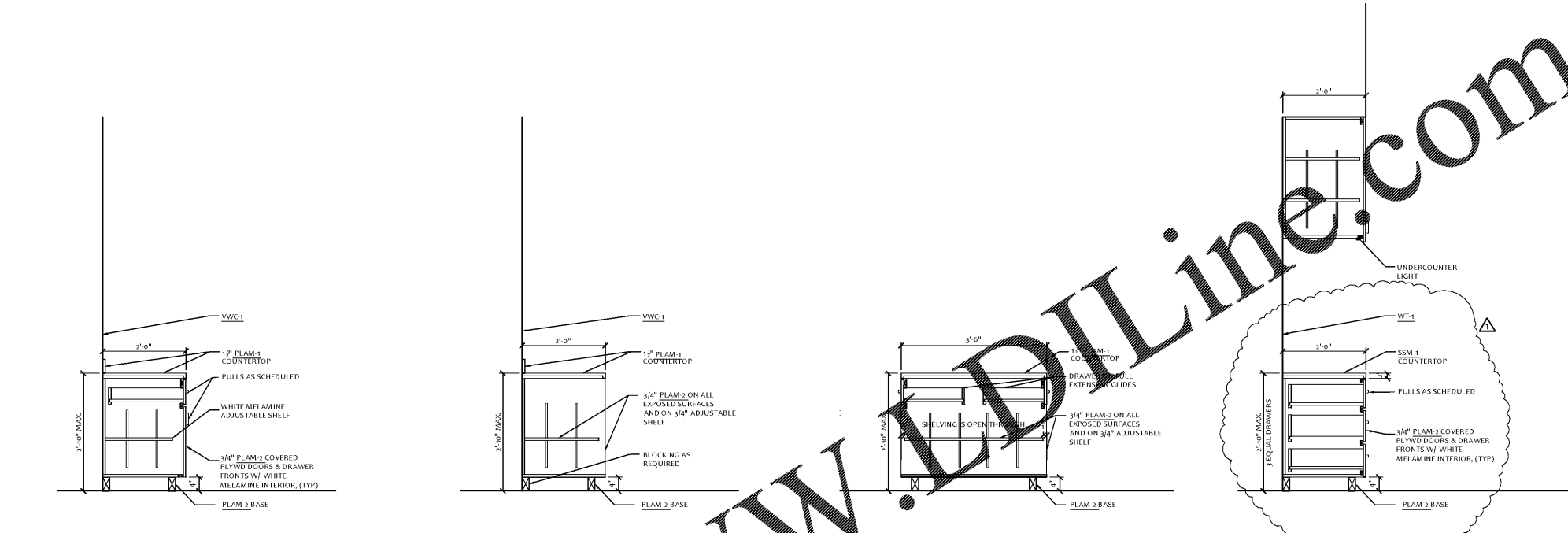
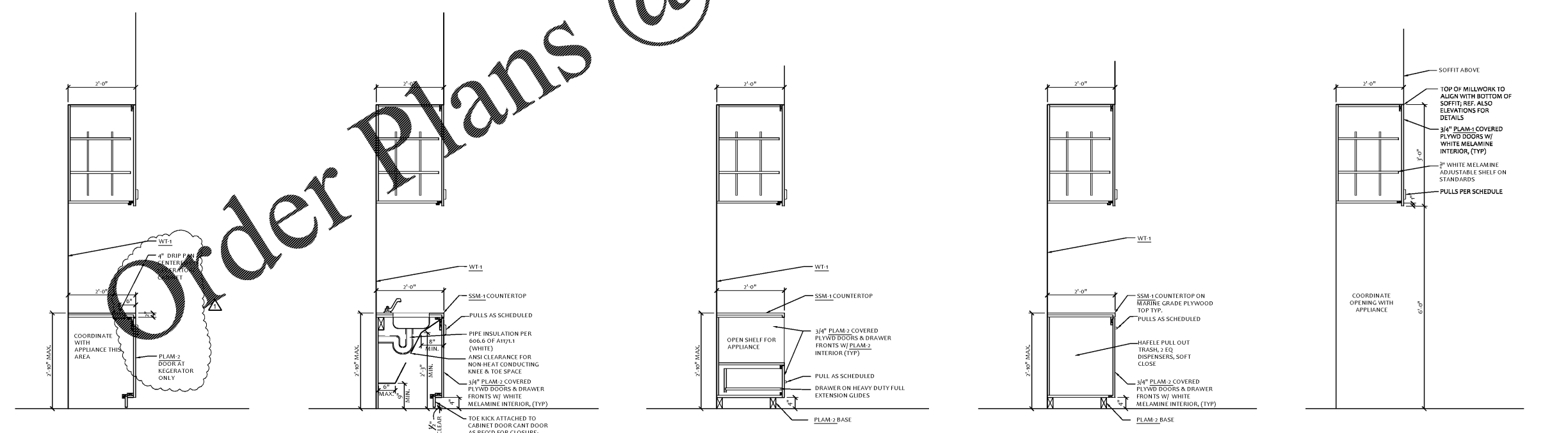


- MILLWORK NOTES:**
- ANY SHELF EXCEEDING 36" IN WIDTH TO BE 1" THICK.
 - ALL DOOR AND DRAWER FRONTS TO BE 3/4" PARTICLE BOARD WITH PLASTIC LAMINATE (OR WOOD VENEER) ON 2 SIDES AND PLASTIC LAMINATE (OR WOOD VENEER) ON ALL 4 EDGES.
 - DOOR HINGES TO BE EQUAL TO BLUM 90A530 & 91A530 170 DEGREE HINGES, TYP. USE THESE HINGES ON ALL 3/4" CABINETS.
 - DRAWERS TO BE CONSTRUCTED USING 1/2" PARTICLE BOARD SIDES, FRONT, AND REAR PANELS WITH 1/4" LUALAN PLYWOOD BOTTOMS UNO. FRONT PANEL TO BE 3/4" PARTICLE BOARD. DRAWERS TO BE ON SLIDES EQUAL TO BLUM 430E SERIES W/ FULL EXTENSION AND SOFT CLOSE.
 - EXPOSED SURFACES OF CABINETS TO BE COVERED WITH PLASTIC LAMINATE (OR WOOD VENEER) UNLESS NOTED OTHERWISE. CABINET INTERIORS TO BE MELAMINE, COLOR AS NOTED, COVERED PARTICLE BOARD UNLESS NOTED OTHERWISE.
 - ADJUSTABLE SHELF SUPPORT EQUAL TO BLUM NO. 34.0040
 - PLASTIC LAMINATE COLORS SHALL BE AS SCHEDULED.
 - ALL DOOR & DRAWER PULLS TO BE AS SCHEDULED ON NOTE 20.4, SHEET A102. REFER TO INTERIOR ELEVATIONS FOR LOCATIONS.
 - ALL PLASTIC LAMINATE MILLWORK COUNTERTOPS AND BACKSPLASHES AT WET LOCATIONS TO BE PLASTIC LAMINATE OVER 3/4" THICK MARINE GRADE PLYWOOD, TYP.
 - G.C. TO PROVIDE SHOP DRAWINGS FOR ALL MILLWORK. DRAWINGS TO PROVIDE SUFFICIENT DETAIL FOR REVIEW OF:
 - MATERIALS, SPECIES, CUT, SURFACING, ARRANGEMENT, AND FINISH
 - HARDWARE AND FINISH SPECIFICATIONS
 - JOINT EDGE AND CORNER CONSTRUCTION DETAILS
 - DIMENSIONAL INFORMATION
 - COORDINATION WITH OTHER APPLICABLE TRADES AND EQUIPMENT
 - HARDWARE TO INCLUDE PULLS, CONCEALED HINGES, HEAVY DUTY FULL EXTENSION DRAWER SLIDES, FULLY RECESSED CAM-TYPE LOCKS AND DRILLED HOLE AND CLIP SHELF SUPPORTS.
 - PROVIDE ADEQUATE SUPPORT FOR ALL COUNTERTOPS, EVEN WHEN NOT SPECIFICALLY SHOWN IN ELEVATIONS. ALL EXPOSED SUPPORTS SHALL MATCH FINISHED MATERIAL.
 - MILLWORK MATERIAL QUALITY AND CONSTRUCTION TO BE IN ACCORDANCE WITH ANY STANDARDS FOR PREMIUM GRADE ASSEMBLY AND INSTALLATION.
 - INSTALLED MILLWORK SHALL BE SCRIBED TO ADJACENT FINISHED SURFACES. FILLER PANELS SHALL NOT BE LARGER THAN 7".
 - G.C. TO PROVIDE FINISH SAMPLES OF MATERIAL FOR REVIEW BY DESIGNER AND ARCHITECT.
 - PLAM BASE TO MATCH CABINETS AT PLAM CABINETS.



9 SECTION @ BASE CABINET @ COPY 302 SCALE: 3/4"=1'-0"
 8 SECTION @ BASE SHELVING @ COPY 302 SCALE: 3/4"=1'-0"
 7 SECTION @ PENINSULA @ COPY 302 SCALE: 3/4"=1'-0"
 6 SECTION @ BASE CABINET SCALE: 3/4"=1'-0"



5 SECTION @ APPLIANCE CABINET SCALE: 3/4"=1'-0"
 4 SECTION @ ACCESSIBLE SINK SCALE: 3/4"=1'-0"
 3 SECTION @ MICROWAVE CABINET SCALE: 3/4"=1'-0"
 2 SECTION @ TRASH BASE CABINET SCALE: 3/4"=1'-0"
 1 SECTION @ OVERHEAD CABINETS SCALE: 3/4"=1'-0"



BR+A
 300 West Summit
 Office Bldg

300 West Summit Ave.
 Suite #310
 Charlotte, NC 28203

PROJECT NUMBER: 19-018
 CONSTRUCTION ISSUE: 6.20.2019
 CLARIFICATIONS 2019.07.03

MILLWORK
 SECTIONS & DETAILS

A6.01