

DRAWING TITLE
 GUEST ROOM PLANS

PROJECT
 HOLIDAY INN EXPRESS
 WILSON, NC
 SCALE
 AS NOTED
 DATE
 05-07-19

DWN BY
 JLM

CHECKED BY
 DND

REVISED

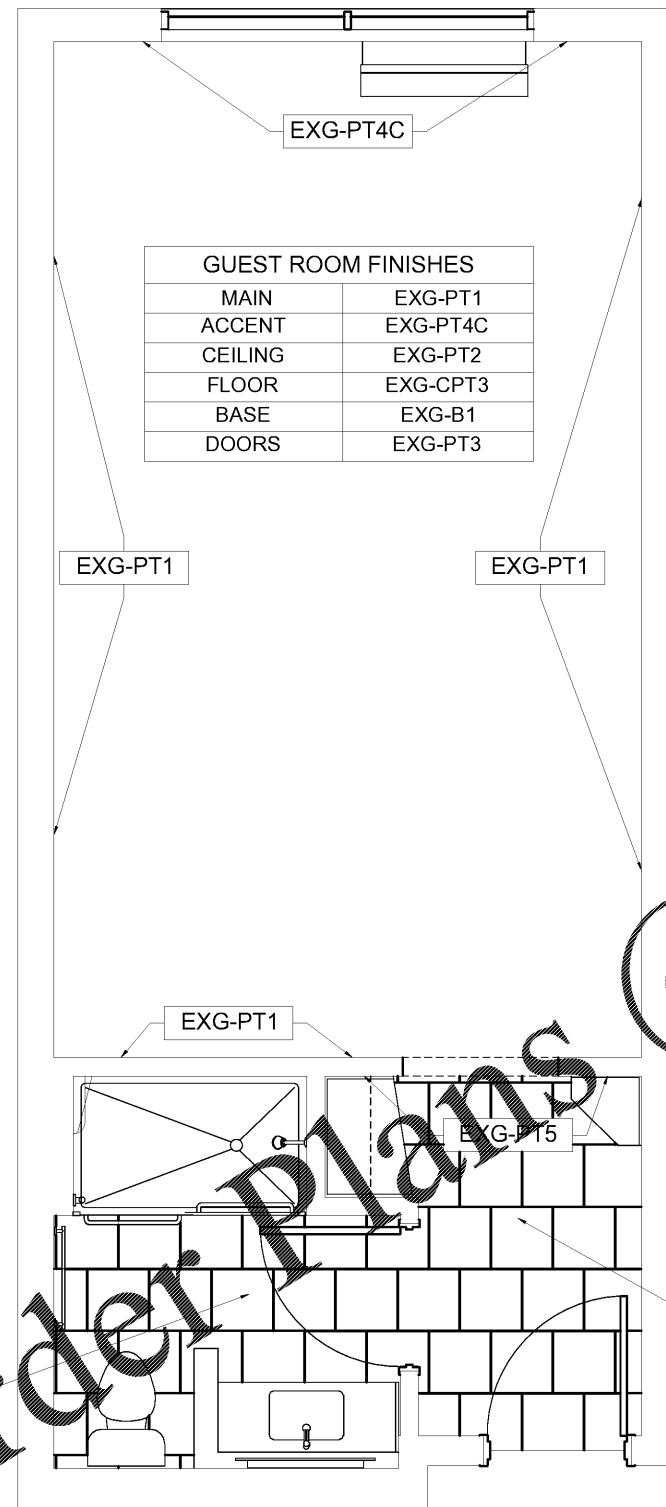
GENERAL NOTES

GENERAL CONTRACTOR

PURCHASING COMPANY

DRAWING NO

ID.11.1



GUEST ROOM FINISHES	
MAIN	EXG-PT1
ACCENT	EXG-PT4C
CEILING	EXG-PT2
FLOOR	EXG-CPT3
BASE	EXG-B1
DOORS	EXG-PT3

BATHROOM FINISHES	
WALLS	EXG-WC2
CEILING	EXG-PT2
FLOOR	EXG-T1
DOOR	EXG-PT3
BASE	EXG-B3

ENTRY FINISHES	
MAIN	EXG-PT1
ACCENT	EXG-PT5
CEILING	EXG-PT2
FLOOR	EXG-T1
BASE	EXG-B3
DOORS	EXG-PT3

ALL WALLS IN ENTRY ARE EXG-PT1
 UNLESS OTHERWISE NOTED

GUESTROOM FINISH SCHEDULE		
TAG	ITEM	QTY
EXG-B1	GUEST ROOM VINYL WALL BASE	
EXG-B3	ENTRY BATHROOM TILE BASE	
EXG-CPT3	GUEST ROOM CARPET	
EXG-PL1	PLASTIC LAMINATE FOR WINDOW TRIM / INTERIOR DOOR	
EXG-PL2	PLASTIC LAMINATE AT INSIDE OF WINDOW TRIM	
EXG-PT1	PAINT AT GUESTROOM WALLS	
EXG-PT2	PAINT AT GUESTROOM CEILING	
EXG-PT3	PAINT AT METAL DOOR/ FRAMES	
EXG-PT4C	ACCENT PAINT/ WALL FINISH AT WINDOW WALL	
EXG-PT5	ACCENT PAINT/ WALL FINISH AT ENTRY	
EXG-SS1	QUARTZ SOLID SURFACE	
EXG-T1	FLOOR TILE AT GUEST BATHROOM/ ENTRY	
EXG-TR2	FLOOR TRANSITION STRIP CERAMIC TILE TO CARPET	
EXG-TR3	EDGE BAND AT SHOWER/ BATH SURROUND	
EXG-WC2	WALLCOVERING AT GUESTROOM BATHROOM	

1 Q/Q SUITE TYP FINISH PLAN & SCHEDULE
 3/16" = 1'-0"