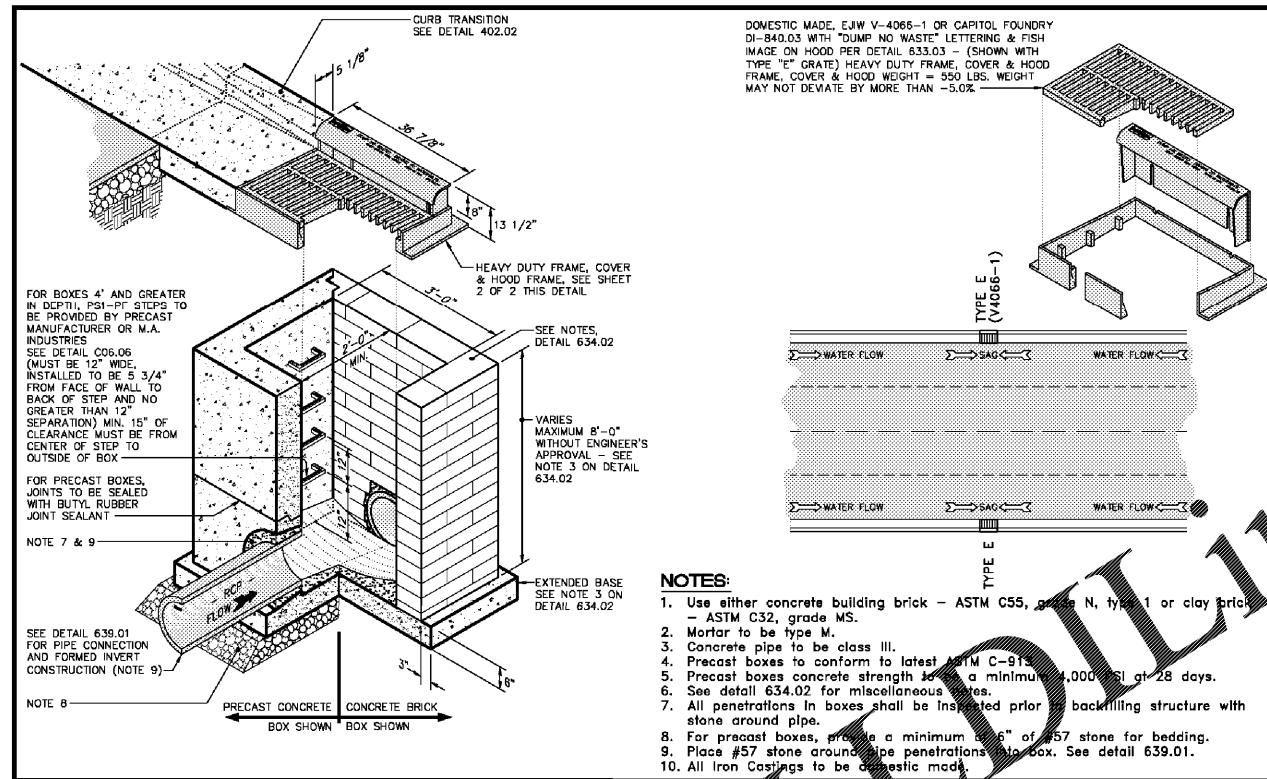
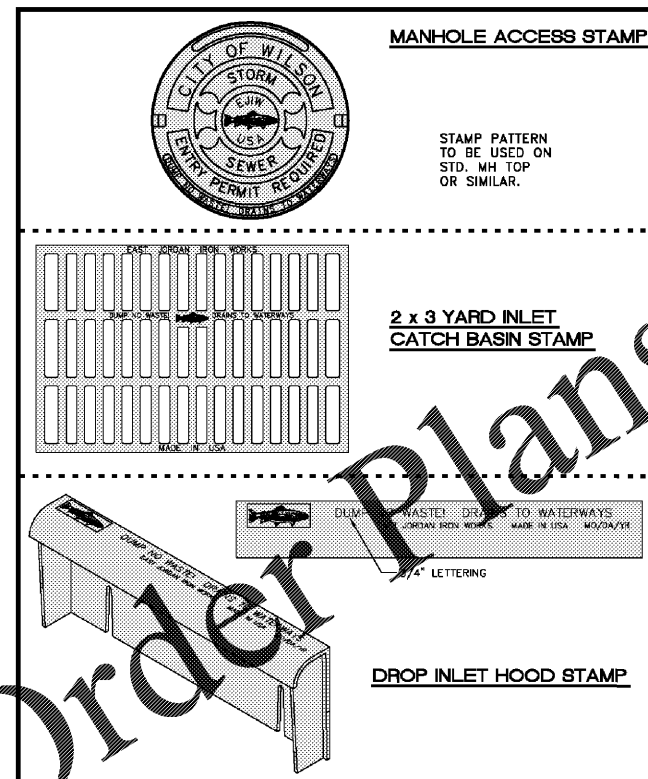
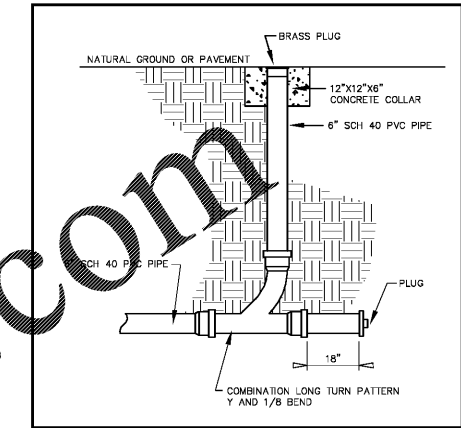


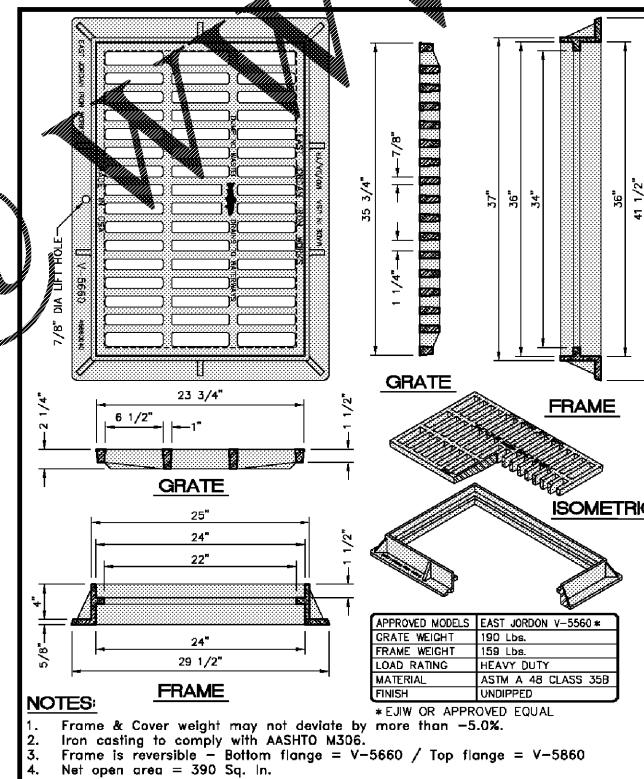
TYPICAL STORM DRAIN PIPE INSTALLATION



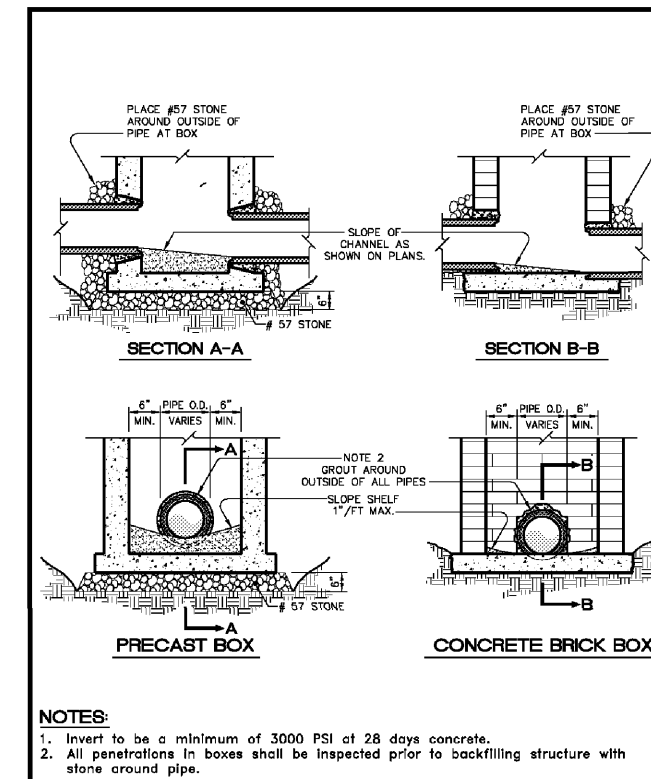
TYPICAL CATCH BASIN WITH CURB INLET AND HOOD



CUSTOM STAMP FOR STORM DRAINAGE STRUCTURES



STANDARD CATCH BASIN FRAME AND GRATE ASSEMBLY



PIPE CONSTRUCTION INTO BOX AND FORMED INVERT DETAIL



TRC Stamp:	City Council Stamp:	Revision	Date	By

Herring-Sutton & Associates, P.A.
Engineers - Surveyors - Planners
2201 Nash Street NW, Wilson, North Carolina 27896 (252) 291-8887

- Holiday Inn Express -
City of Wilson, N.C.

Storm Sewer Construction Details

Date:	July 2018
Scale:	None
Map No.:	2018-4260L
Drawn by:	twh
Sheet No.:	DT-3