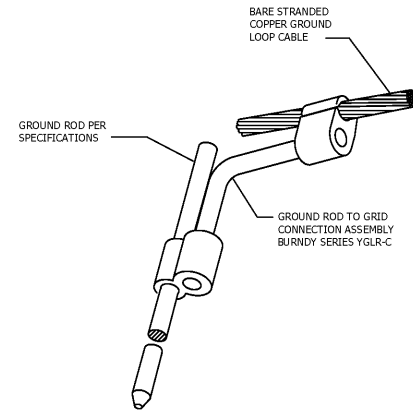
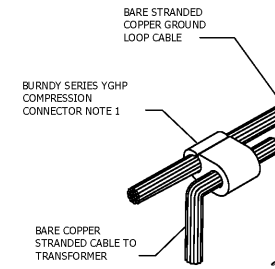


**1** GROUNDING ELECTRODE DETAIL  
 SCALE: N.T.S.



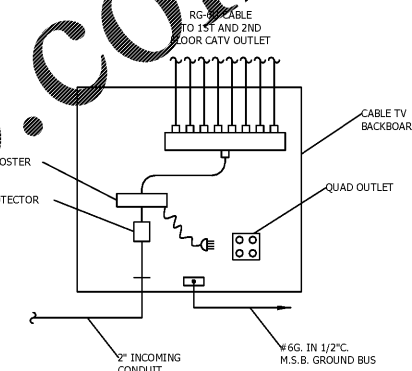
**2** TYPICAL CABLE TO GROUND ROD DETAIL  
 SCALE: N.T.S.

NOTES:  
 1. COORDINATE CONNECTOR SIZE WITH GROUND CONDUCTOR BEING CONNECTED TO.

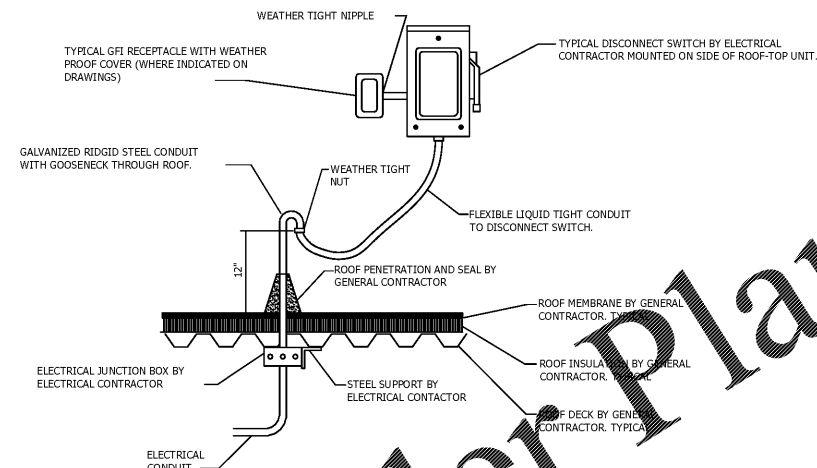


**3** TYPICAL CABLE TO CABLE DETAIL  
 SCALE: N.T.S.

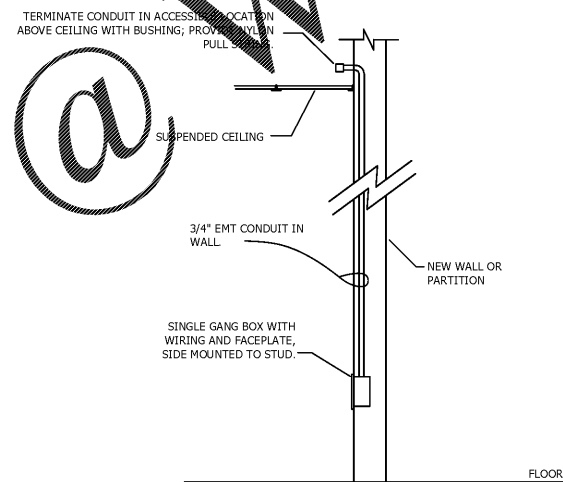
NOTES:  
 COORDINATE CONNECTOR SIZE WITH CABLES BEING CONNECTED.



**7** TYPICAL CATV RISER  
 SCALE: N.T.S.

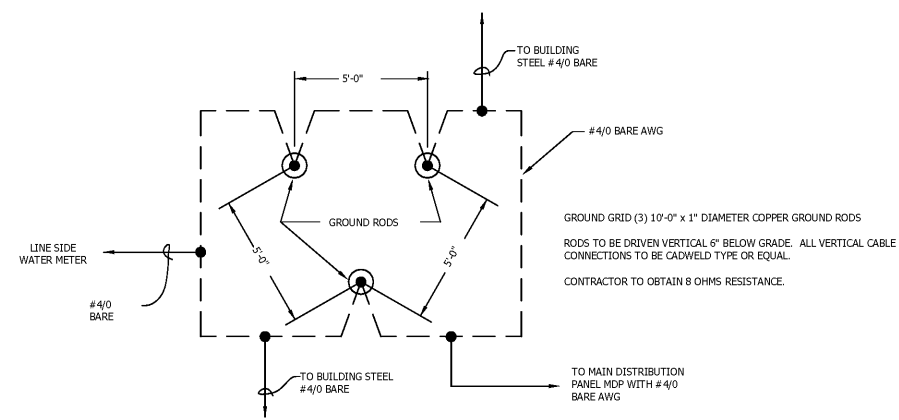


**5** CONDUIT PENETRATION DETAIL  
 SCALE: N.T.S.



**6** DATA/TELEPHONE DEVICE LOCATION MOUNTING DETAIL  
 SCALE: N.T.S.

NOTE:  
 1. WIRING AND DEVICES AS SHOWN ON LOW VOLTAGE DRAWINGS. VERIFY BOX LOCATION WITH OWNER IN FIELD.



**4** GROUNDING GRID DETAIL  
 SCALE: N.T.S.

No.	Description	Date

DISCLAIMER: entegra™ is providing, by agreement with the client, professional engineering services. entegra™ does not warrant, represent or guarantee the accuracy or completeness of the information provided. entegra™ is not responsible for any errors or omissions in the drawings or specifications. entegra™ is not responsible for any damage to property or persons resulting from the use of the drawings or specifications. entegra™ is not responsible for any delay in the completion of the project.

**MEISTER-COX ARCHITECTS**  
 INFO@MEISTER-COX.COM  
 PHONE: 610-375-1331 FAX: 610-375-4555  
 1522 PENN AVENUE WYOMISSING, PA 19610  
 WWW.MEISTER-COX.COM

SEAL:

**ELECTRICAL DETAILS**  
 HOLIDAY INN EXPRESS & SUITES  
 INTERSECTION OF HAYNES PLACE & LAMM RD.  
 WILSON, NC 27883

STATUS:	FOR BID
PROJ. DATE:	06/06/2019
PROJ. NO.:	19-116
PRINTED:	06/06/2019
DRAWN BY:	jlm/brm/jpk
CHECKED BY:	brm
SHEET NO.:	E8.1
SCALE:	AS NOTED