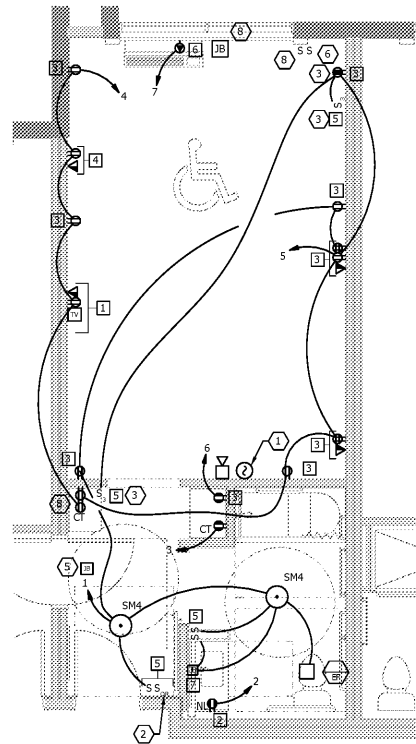
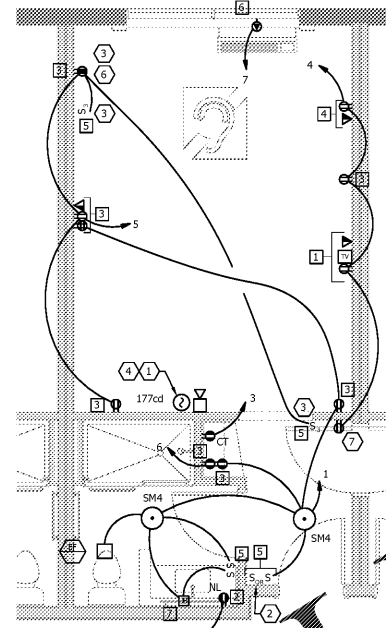


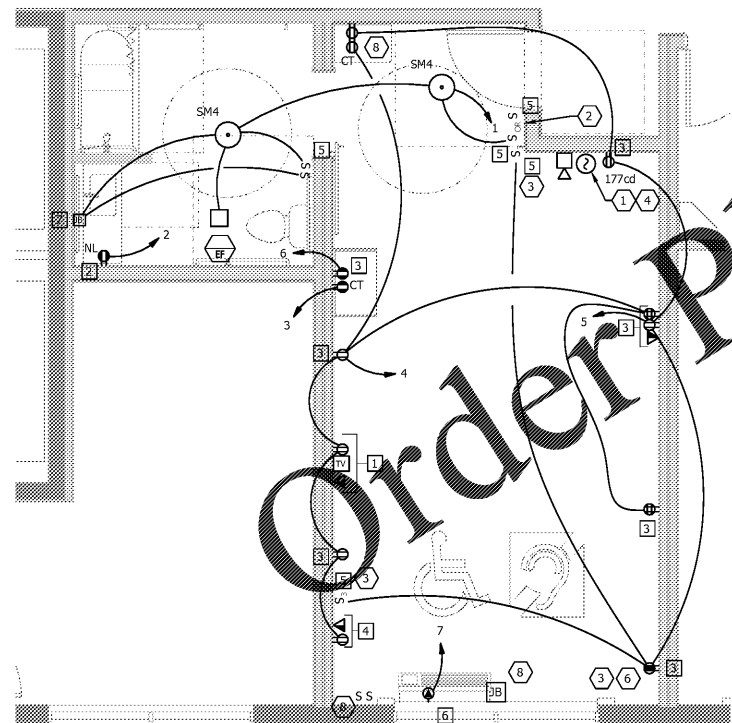
1 ELECTRICAL - ENLARGED QUEEN GUEST ROOM PLAN  
 SCALE: 1/4" = 1'-0"



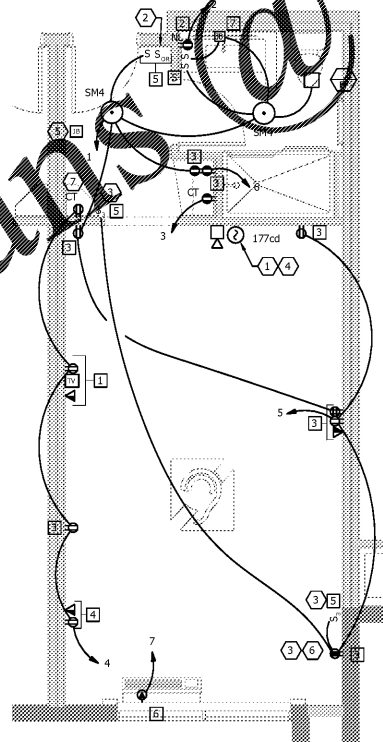
2 ELECTRICAL - ENLARGED ACC. QUEEN GUEST ROOM PLAN  
 SCALE: 1/4" = 1'-0"



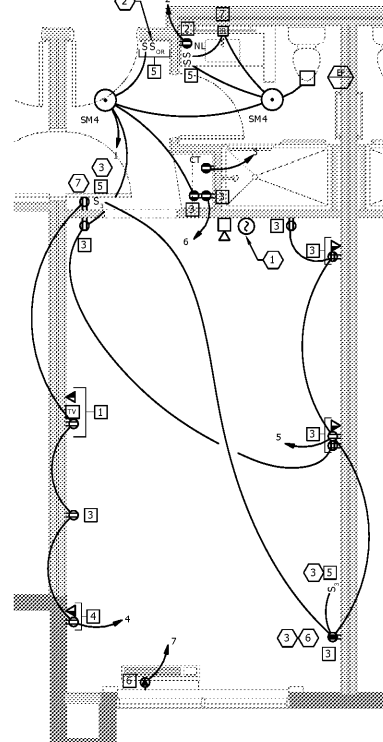
3 ELECTRICAL - ENLARGED H/I QUEEN GUEST ROOM PLAN  
 SCALE: 1/4" = 1'-0"



4 ELECTRICAL - ENLARGED ACC. QUEEN SUITE ROOM PLAN  
 SCALE: 1/4" = 1'-0"



5 ELECTRICAL - ENLARGED H/I QUEEN SUITE ROOM PLAN  
 SCALE: 1/4" = 1'-0"



6 ELECTRICAL - ENLARGED H/I QUEEN SUITE ROOM PLAN  
 SCALE: 1/4" = 1'-0"

WWW.LDILine.com

- MOUNTING NOTES:**
- 1 MOUNT OUTLET/TELECOM/TV AT 5'-0" AFF TO 1/4 OF BACKBOX, MOUNT VERTICALLY BEHIND TELEVISION. MOUNT DEVICES IN LEG-RAND BACKBOX, MODEL # TV1WTVSSW.
  - 2 MOUNT GFCI RECEPTACLE AT 3'-0" AFF TO 1/4 OF BACKBOX, MOUNT HORIZONTALLY.
  - 3 MOUNT OUTLET AND/OR TELECOM AT 1'-0" AFF TO 1/4 OF BACKBOX, MOUNT VERTICALLY. WHERE MORE THAN ONE DEVICE IS PROVIDED, MOUNT UNDER SINGLE, NON-SECTIONAL FACEPLATE.
  - 4 MOUNT OUTLET AND DATA OUTLET AT 2'-10" AFF TO 1/4 OF BACKBOX, MOUNT VERTICALLY.
  - 5 MOUNT SWITCH AT 5'-4" AFF TO 1/4 OF BACKBOX, MOUNT VERTICALLY. WHERE MORE THAN ONE SWITCH IS PROVIDED, MOUNT UNDER SINGLE FACEPLATE.
  - 6 MOUNT RECEPTACLE PER PTAC MANUFACTURER REQUIREMENTS.
  - 7 MOUNTING HEIGHT TO BE DETERMINED BY ARCHITECT AND INTERIOR DESIGNER BASED ON SIZE AND LOCATION OF MIRROR.

- NEW WORK KEYED NOTES:**
- 1 ADDRESSABLE SMOKE DETECTOR TO BE WALL MOUNTED WITH SOUNDER BASE.
  - 2 ROOM KEY MASTER SWITCH AS REQUIRED PER IECC 505.2.3. WIRE ALL PERMANENTLY WIRED LUMINAIRES (EXCEPT BATHROOM LUMINAIRES) THRU MASTER SWITCH.
  - 3 SWITCHED RECEPTACLE FOR LIGHTING. COORDINATE FINAL LOCATION WITH FFE PACKAGE.
  - 4 IN HEARING IMPAIRED ADA SUITES, PROVIDE ADDRESSABLE SMOKE DETECTOR WITH HIGH INTENSITY STROBE, 177 CANDELA. WHERE MULTIPLE DETECTORS ARE PROVIDED, ALL SHALL BE WIRED TO ACTIVE TOGETHER.
  - 5 INSTALL ADA SWITCH FOR HANGING LIGHT AND MOTORIZED SHADES BUILT INTO WINDOW SURROUND. ROUGH-IN JUNCTION BOX FOR MOTORIZED SHADES AND PROVIDE CONDUIT BETWEEN BOX AND SWITCH. IF THE OPTION FOR REMOTE CONTROLLED SHADE IS CHOSEN, THE SHADE SWITCH SHOULD BE ELIMINATED.
  - 6 MOUNT OUTLET AT 2'-0" FROM CORNER.
  - 7 REMOVE OUTLET IF CONNECTING DOOR IS PROVIDED AND SHELF IS ELIMINATED.
  - 8 ADA SUITE CONVENIENT SHELF AREA TO HAVE (2) RECEPTACLES. (1) FOR MICROWAVE ON LOWER SHELF AND (1) FOR CONVENIENT SHELF ABOVE. REFER TO ARCHITECTURAL DRAWINGS FOR MOUNTING HEIGHTS.

- FOR HEARING IMPAIRED ROOMS, PROVIDE THE FOLLOWING DEVICES:**
- DOOR BELL AT SUITE ENTRANCE
  - STROBE IN SUITE TO IDENTIFY DOOR BELL ACTIVATION WITH CUTOFF SWITCH (SEPARATE FROM FIRE ALARM SYSTEM).
  - 177 CD HORN/STROBE CONNECTED TO BUILDING FIRE ALARM SYSTEM IN BEDROOM
  - 177 CD STROBE CONNECTED TO BUILDING FIRE ALARM SYSTEM IN BATHROOM.
  - ADDRESSABLE SMOKE DETECTOR WITH SOUNDER BASE AND STROBE WHICH ACTIVATES UPON SMOKE ALARM.

**GENERAL NOTES:**

- MAXIMUM DESIGN WATTAGE FOR COFFEE MAKER - 700 WATTS
- MAXIMUM DESIGN WATTAGE FOR REFRIGERATOR - 500 WATTS
- COORDINATE EXACT LOCATION OF THE FOLLOWING ITEMS AND ADJUST RECEPTACLE LOCATIONS ACCORDINGLY PRIOR TO ROUGH-IN:
  1. REFRIGERATOR (MINI).
  2. COFFEE MAKER.

COORDINATE ALL POWER AND DATA INSTALLATION LOCATIONS WITH REQUIREMENTS OF FFE PACKAGE AND FURNITURE SHOP DRAWINGS.

FLOOR PLAN CIRCUIT NOMENCLATURE SEE DWG 12.1	SUITE SUITE	UNIT PLAN CIRCUITING						
		LP1B-01	LP1B-02	LP1B-03	LP1B-04	LP1B-05	LP1B-06	LP1B-07
QUEEN SUITE CIRCUITING SEE DWG 12.1	DETAIL: 3	1	2	3	4	5	6	7

No.	Description	Date

**MEISTER COX ARCHITECTS**  
 INFO@MEISTER-COX.COM  
 PHONE: 610-375-1331 FAX: 610-375-4555  
 1522 PENN AVENUE WYOMISSING, PA 19610  
 WWW.MEISTER-COX.COM

**ELECTRICAL ENLARGED GUEST ROOM PLANS**

HOLIDAY INN EXPRESS & SUITES  
 INTERSECTION OF HAYNES PLACE & LAMMI RD.  
 WILSON, NC 27883

STATUS: FOR BID

PROJ. DATE: 06/06/2019

PROJ. NO: 19-116

PRINTED: 06/06/2019

DRAWN BY: jlm/brm/jpk

CHECKED BY: brm

SHEET NO. **E3.2**

SCALE: AS NOTED