

No.	Description	Date

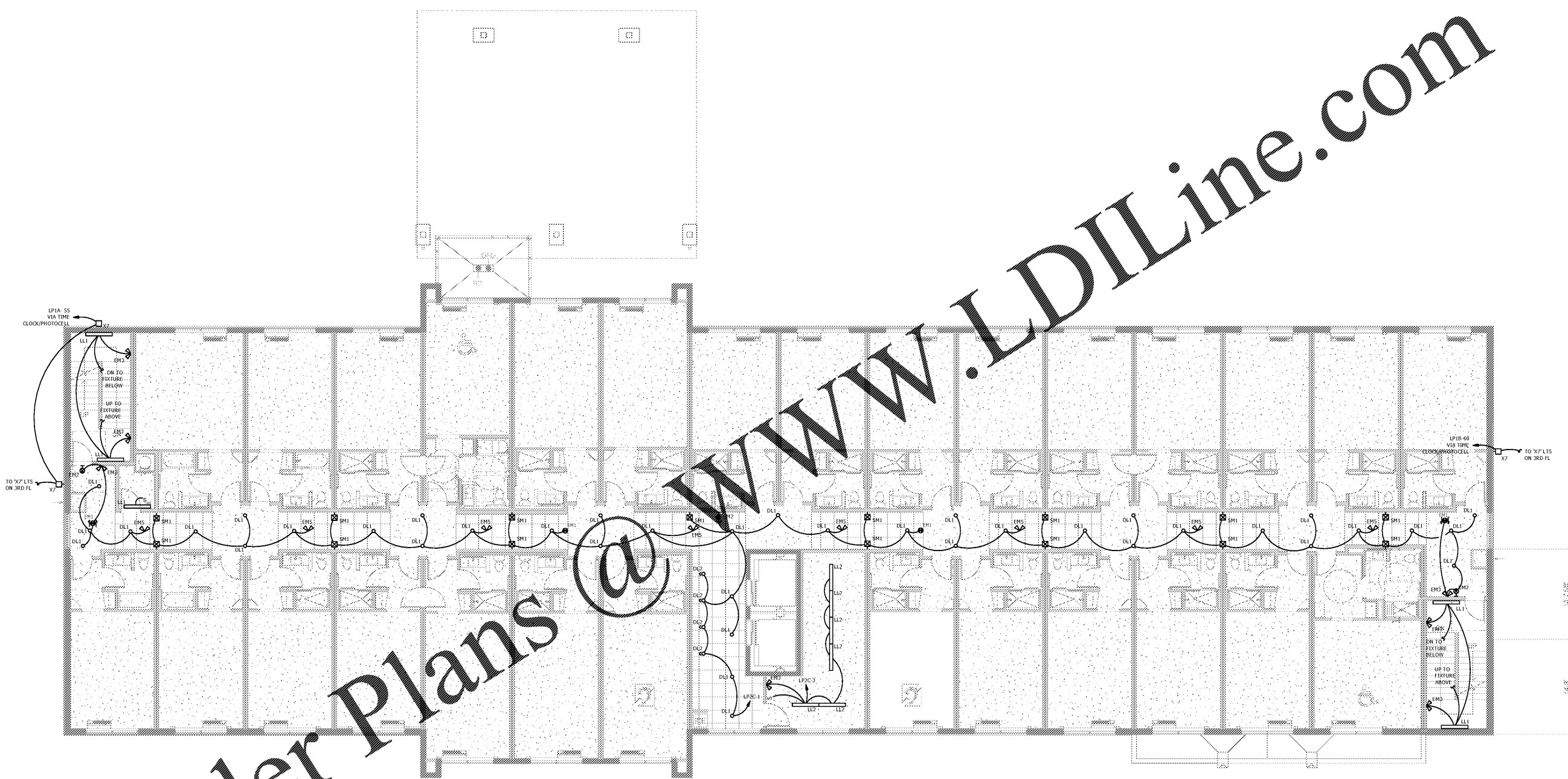
DISCLAIMER: entegra™ is providing, by agreement with the client, professional engineering services for the purpose of recognizing the data, plans, specifications, reports, drawings, and other documents as electronic media including but not necessarily limited to CAD documents. entegra™ does not warrant the accuracy, completeness, or reliability of the information contained in these documents. entegra™ is not responsible for any errors or omissions in these documents. entegra™ is not responsible for any damage or loss of data or information resulting from the use of these documents. entegra™ is not responsible for any damage or loss of data or information resulting from the use of these documents. entegra™ is not responsible for any damage or loss of data or information resulting from the use of these documents.

MEISTER COX ARCHITECTS
 INFO@MEISTER-COX.COM
 PHONE: 610-375-1331 FAX: 610-375-4555
 1522 PENN AVENUE WYOMISSING, PA 19610
 WWW.MEISTER-COX.COM

SEAL:

ELECTRICAL SECOND FLOOR PLAN - LIGHTING
 HOLIDAY INN EXPRESS & SUITES
 INTERSECTION OF HAYNES PLACE & LAMM RD.
 WILSON, NC 27883

STATUS:	FOR BID
PROJ. DATE:	06/06/2019
PROJ. NO.:	19-116
PRINTED:	06/06/2019
DRAWN BY:	jlm/brm/jpk
CHECKED BY:	brm
SHEET NO.:	E2.4
SCALE:	AS NOTED



A
E2.4 ELECTRICAL SECOND FLOOR PLAN - LIGHTING
 SCALE: 1/8" = 1'-0"

- NEW WORK GENERAL NOTES:**
1. ALL EMERGENCY LIGHTING AND EXIT SIGNS SHALL BE WIRED TO LOCAL ZONE UNSWITCHED 120V NORMAL CIRCUIT.
 2. PROVIDE DIGITAL 24 HOUR ASTRONOMICAL TIME CLOCK, TORX SCREW OR EQUIV. FOR CONTROL OF EXTERIOR LIGHTING FIXTURES. COORDINATE LOCATION OF TIMECLOCK WITH OWNER.
 3. WHERE LIGHT PENETRATES RATED ASSEMBLY, PROVIDE PENMANUFACTURED RATED BOX ENCLOSURE FOR LIGHT FIXTURE TO MAINTAIN FIRE RATING OF UL ASSEMBLY.
 4. ALL EXIT SIGNS SHOWN SHALL HAVE ADJACENT LOW EXIT SIGN.

Order Plans @ WWW.LDILine.com