

No.	Description	Date

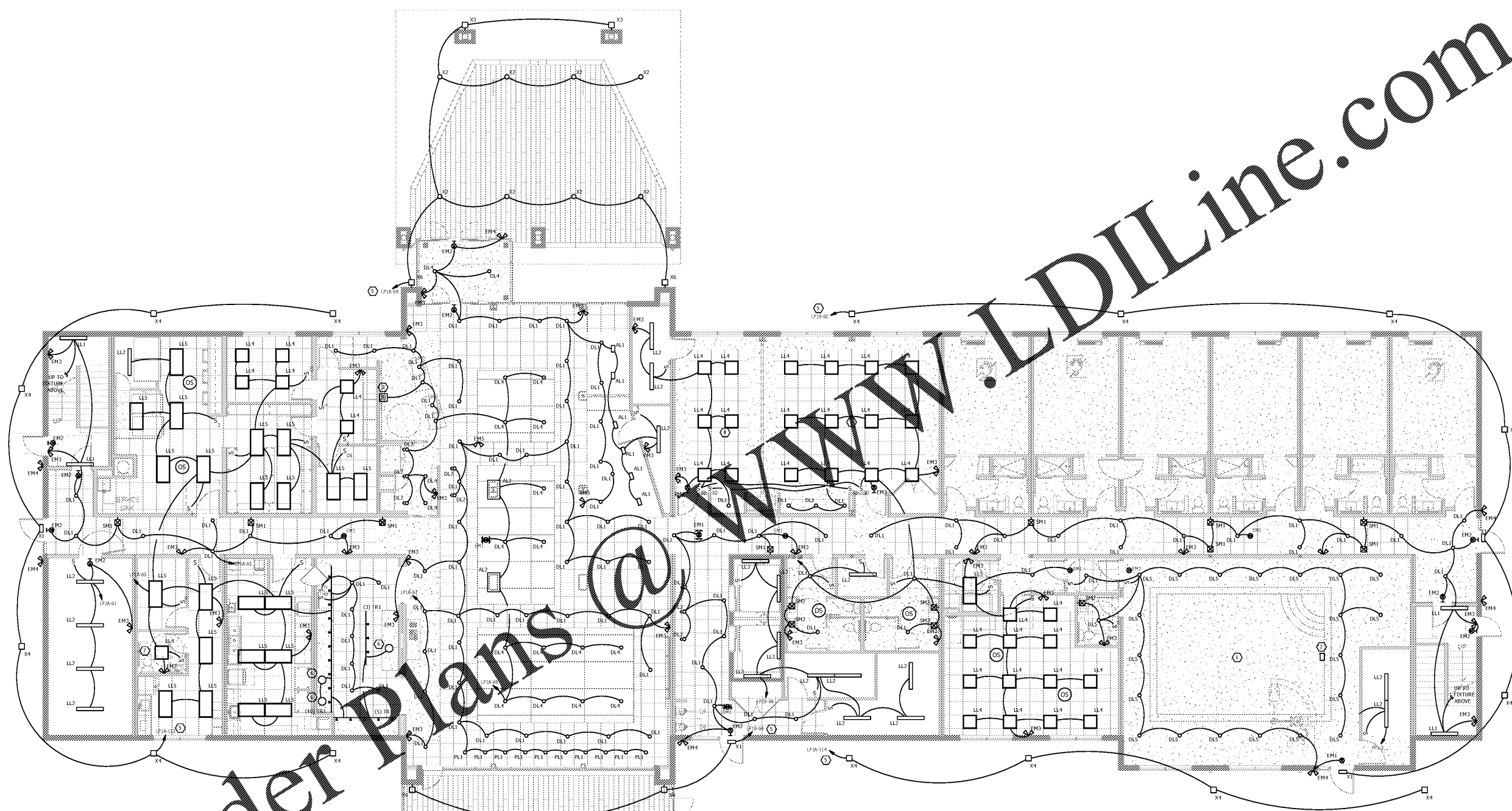
DISCLAIMER: entegra™ is providing, by agreement with the client, professional engineering services. entegra™ does not warrant, represent or guarantee the accuracy, completeness or reliability of the data, plans, specifications, reports, drawings or any other documents prepared or used in connection with the project. entegra™ is not responsible for any errors or omissions in any documents or drawings prepared or used in connection with the project. entegra™ is not responsible for any damage, injury or loss of any kind, including consequential, special or punitive damages, arising from the use of any documents or drawings prepared or used in connection with the project. The client is responsible for the accuracy, completeness and reliability of the data, plans, specifications, reports, drawings or any other documents prepared or used in connection with the project. The client is responsible for the accuracy, completeness and reliability of the data, plans, specifications, reports, drawings or any other documents prepared or used in connection with the project.

**MEISTER COX ARCHITECTS**  
 INFO@MEISTER-COX.COM  
 PHONE: 610-375-1331 FAX: 610-375-4555  
 1522 PENN AVENUE WYOMISSING, PA 19610  
 WWW.MEISTER-COX.COM

SEAL:

**ELECTRICAL FIRST FLOOR PLAN - LIGHTING**  
 HOLIDAY INN EXPRESS & SUITES  
 INTERSECTION OF HAYNES PLACE & LAMM RD.  
 WILSON, NC 27883

STATUS:	FOR BID
PROJ. DATE:	06/06/2019
PROJ. NO.:	19-116
PRINTED:	06/06/2019
DRAWN BY:	jlm/brm/jpk
CHECKED BY:	brm
SHEET NO.:	E2.2
SCALE:	AS NOTED



Order Plans @

- NEW WORK KEYED NOTES:**
1. MOUNT POOL LIGHTING AT 80" AFF. COORDINATE FINAL LOCATION OF FIXTURES IN POOL WITH MC AND FINAL DUCT WORK LAYOUT.
  2. IN POOL UNDERWATER LIGHT FIXTURE. WIRE BACK TO PANEL PPI.
  3. HOLIDAY INN LOGO LIGHT HARDWARE CONNECTION PROVIDED WITH FFBE PACKAGE.
  4. PROVIDE FIXTURES IN THIS AREA WITH DIMMING CAPABILITIES TO 5% DIMMING.
  5. CONTROL VIA TIME CLOCK AND PHOTOCELL. SEE EXTERIOR LIGHTING CONTROL DETAIL FOR WIRING REQUIREMENTS.
  6. CORE CONCEPTS, FORMULA BLUE BREAKFAST AREA PENDANT LIGHT. FIXTURE PURCHASE TO BE COORDINATED WITH OWNER AND HOLIDAY INN EXPRESS BRAND.
  7. PROVIDE HARD CEILING FLANGE WHERE INSTALLED IN DRYWALL CEILING. COORDINATE WITH ARCHITECTURAL RCP.
- NEW WORK GENERAL NOTES:**
1. ALL EMERGENCY LIGHTING AND EXIT SIGNS SHALL BE WIRED TO LOCAL ZONE UNSWITCHED 120V NORMAL CIRCUIT.
  2. PROVIDE DIGITAL 24 HOUR ASTRONOMICAL TIME CLOCK FOR DELAYED OR EQUAL FOR CONTROL OF EXTERIOR LIGHTING FIXTURES. COORDINATE LOCATION OF TIMECLOCK WITH OWNER.
  3. WHERE LIGHT PENETRATES RATED ASSEMBLY, PROVIDE PREMANUFACTURED RATED BOX ENCLOSURE FOR LIGHT FIXTURE TO MAINTAIN FIRE RATING OF UL ASSEMBLY.
  4. ALL EXIT SIGNS SHOWN SHALL HAVE ADJACENT LOW EXIT SIGN.

**A** ELECTRICAL FIRST FLOOR PLAN - LIGHTING  
 SCALE: 1/8" = 1'-0"