

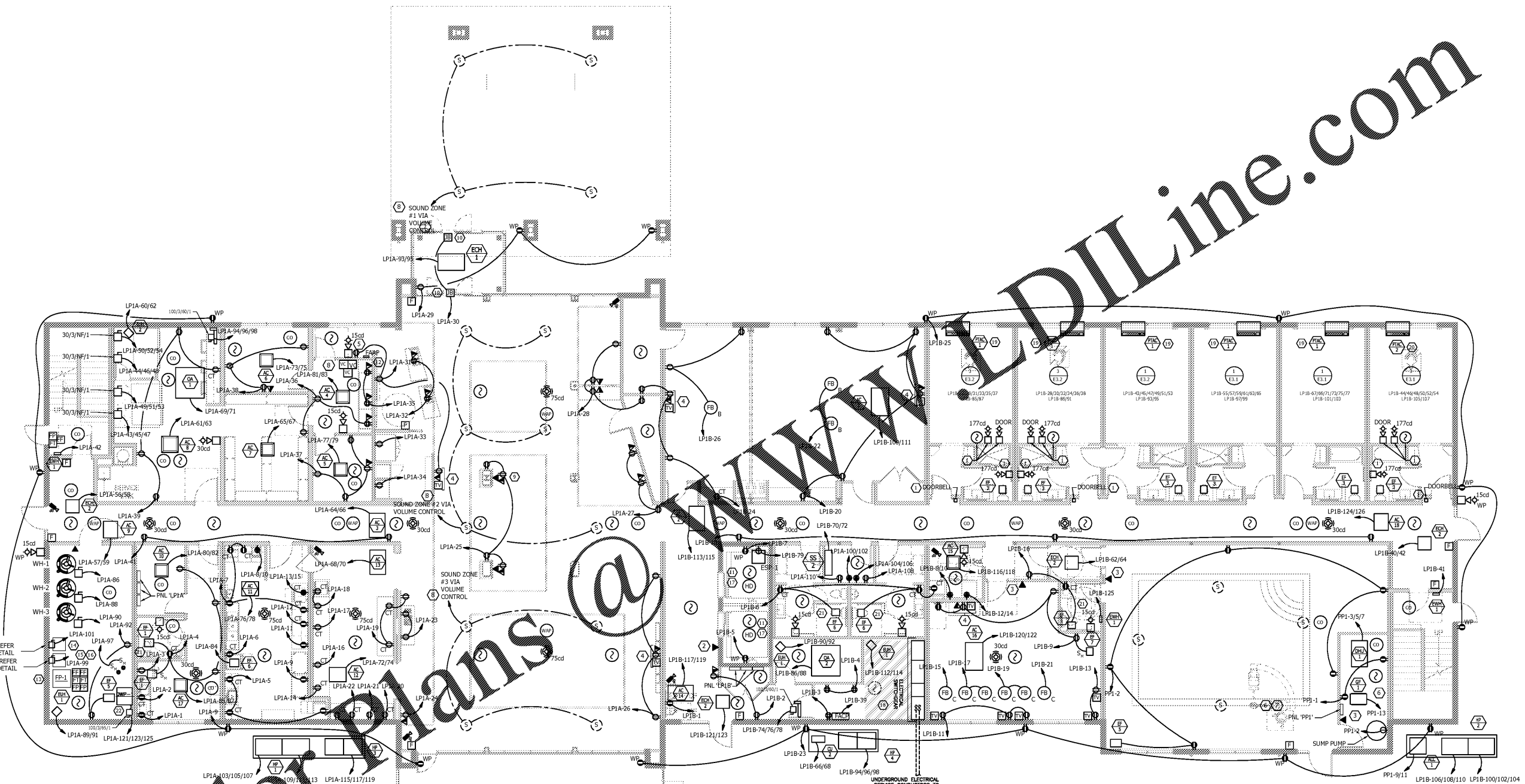
No.	Description	Date

MEISTER COX ARCHITECTS
 INFO@MEISTER-COX.COM
 PHONE: 610-375-1331 FAX: 610-375-4555
 1522 PENN AVENUE WYOMISSING, PA 19610
 WWW.MEISTER-COX.COM

SEAL:

ELECTRICAL FIRST FLOOR PLAN - POWER
 HOLIDAY INN EXPRESS & SUITES
 INTERSECTION OF HAYNES PLACE & LAMM RD.
 WILSON, NC 27883

STATUS:	FOR BID
PROJ. DATE:	06/06/2019
PROJ. NO.:	19-116
PRINTED:	06/06/2019
DRAWN BY:	jlm/brm/jpk
CHECKED BY:	brm
SHEET NO.:	E2.1
SCALE:	AS NOTED



Order Plans @ WWW.DILine.com

A ELECTRICAL FIRST FLOOR PLAN - POWER
 E2.1 SCALE: 1/8" = 1'-0"

- NEW WORK KEYED NOTES:**
- FOR HEARING IMPAIRED ROOMS, PROVIDE THE FOLLOWING DEVICES:
 - DOOR BELL AT SUITE ENTRANCE
 - STROBE IN SUITE TO IDENTIFY DOOR BELL ACTIVATION WITH CUTOFF SWITCH SEPARATE FROM FIRE ALARM SYSTEM
 - 177 CD HORN/STROBE CONNECTED TO BUILDING FIRE ALARM SYSTEM IN BEDROOM
 - 177 CD STROBE CONNECTED TO BUILDING FIRE ALARM SYSTEM IN BATHROOM
 - ADDRESSIBLE SMOKE DETECTOR WITH SOUNDER BASE AND STROBE WHICH ACTIVATES UPON SMOKE ALARM.
 - FIRE DEPARTMENT 2-WAY COMMUNICATION/HOUSE PHONE.
 - HOUSE PHONE. MOUNT AT 60" AFF.
 - 6"-8" MOUNTING HEIGHT FOR TV CATHY AND RECEPTACLE. MOUNT IN RECESSED BOX.
 - POWER FOR JIG BRAND SCENT MACHINE. COORDINATE FINAL LOCATION WITH OWNER PRIOR TO TOUGH-IN.
 - EC SHALL PROVIDE ALL POWER CONNECTIONS FROM PANEL #P1 TO POOL EQUIPMENT. COORDINATE ALL POWER REQUIREMENTS WITH POOL VENDOR. PROVIDE AND SIZE CIRCUITING, CONDUIT, STARTERS, AND DISCONNECTS PER NEC.
 - POOL GROUNDING SHALL BE PROVIDED BY POOL CONTRACTOR AND WIRING TO BUILDING GROUNDING SYSTEM. ELECTRICAL CONTRACTOR SHALL MAKE FINAL GROUNDING CONNECTIONS.
 - SOUND SYSTEM AND SPEAKERS PROVIDED PER JIG BRAND STANDARDS. PROVIDE ALL NECESSARY COMPONENTS FOR A COMPLETE AND OPERATIONAL SYSTEM INSTALLATION. VOLUME CONTROL FOR SOUND ZONES 1 THRU 3.
 - INFORMATION TABLE TELEVISION. COORDINATE FINAL MOUNTING HEIGHT FOR TV CATHY AND RECEPTACLE WITH JIG PRIOR TO TOUGH-IN. MOUNT IN RECESSED BOX.
 - POWER FOR FRONT DOOR AUTOMATIC CONTROL DEVICE.
 - MOUNT SMOKE DETECTOR AND HEAT DETECTOR AT BOTTOM ELEVATOR SHW1.
 - COORDINATE EXACT LOCATION OF FIRE ALARM ANNUNCIATOR PANEL WITH FIRE MARSHAL PRIOR TO INSTALLATION.
 - WIRE FIRE PUMP SKID AND CONTROLLER TO FIRE PUMP SECTION IN SHWR-1.
 - FIRE SPRINKLER DRY PIPE RISER. PROVIDE CONNECTIONS TO FIRE ALARM FOR FLOW SWITCH, PRESSURE SWITCH, AND LOW AIR ALARM. PROVIDE POWER CONNECTION FOR AIR COMPRESSOR.
 - FIRE SPRINKLER WET PIPE RISER. PROVIDE CONNECTIONS TO FIRE ALARM FOR FLOW SWITCH AND PRESSURE SWITCH.
 - DOCKSYE PUMP CONNECTION ON FIRE PUMP SKID. WIRE TO INDICATED CIRCUIT.
 - ALL EQUIPMENT TO BE MOUNTED IN PIT. EQUIPMENT TO BE NEMA 4P RATED.
 - CONTRACTOR SHALL COORDINATE INSTALLATION OF HAND ELECTRICAL SERVICE WITH UTILITY COMPANY PRIOR TO BID. COORDINATE LOCATION OF METER, CT CABINET, TRANSFORMER, AND VAMP UPD. PROVIDE TRENCHING AND MODEL FOR SERVICE CONCRETE.
 - PROVIDE 20 AMP, 208 VOLT PLUG FOR PTAC-1. SEE ENLARGED ROOM PLANS FOR WIRING.
 - PROVIDE 30 AMP, 208 VOLT PLUG FOR PTAC-1. SEE ENLARGED ROOM PLANS FOR WIRING.
 - CONNECT FAN TO TIME DELAY AND/OR PILOT LIGHT SWITCH (REFER TO MECH DRAWINGS). COORDINATE EXACT SWITCH LOCATION IN THE FIELD.
 - DOMESTIC BOOSTER PUMP. PROVIDE DISCONNECT. SIZE AS REQUIRED.

- GENERAL NOTES:**
- REFER TO MECHANICAL DRAWINGS FOR SMOKE DAMPER LOCATIONS. ALL SMOKE DAMPERS SHALL BE WIRED TO 120 VOLT AVAILABLE DEDICATED CIRCUIT. ALL SMOKE DAMPERS SHALL BE CONTROLLED VIA FIRE ALARM SYSTEM ACTIVATION. PROVIDE ALL LINE VOLTAGE WIRING AND FIRE ALARM WIRING AS REQUIRED TO MEET IBC SECTION 716 REQUIREMENTS.
 - PROVIDE SOUND SYSTEM PER FRANCHISE REQUIREMENTS. COORDINATE ALL WORK WITH FRANCHISE AND OWNER PRIOR TO INSTALLATION.
 - REFER TO ENLARGED PLANS FOR POWER CIRCUITING, LIGHTING CIRCUITING, EXHAUST FAN REQUIREMENTS, AND PTAC REQUIREMENTS.