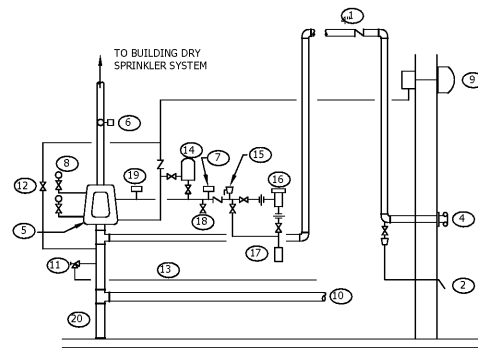


**RISER DIAGRAM NOTES**

- 1 CHECK VALVE
- 2 2" DRAIN PIPED 6" ABOVE FINISHED GRADE
- 3 BALL DRIP
- 4 CHROME FIRE DEPARTMENT CONNECTION WITH "AUTO SPRINKLER" LETTERING POTTER-ROEMER 5751 OR 5753. COORDINATE HOSE THREAD AND STYLE WITH LOCAL FIRE DEPARTMENT. MOUNT AT A MINIMUM OF 24" AFG.
- 5 6" VIKING DRY PIPE VALVE
- 6 FLOW SWITCH
- 7 PRESSURE SWITCH MODEL A-1
- 8 WATER GAUGE
- 9 VIKING WATER MOTOR ALARM F-1 WITH POTTER ROEMER SIGN 6340, "WHEN BELL RINGS CALL FIRE DEPARTMENT"
- 10 6" MAIN FROM MAIN SERVICE.
- 11 2" MAIN DRAIN VALVE
- 12 ALARM TEST VALVE
- 13 2" MAIN DRAIN
- 14 ACCELERATOR
- 15 RELIEF VALVE
- 16 AIR PRESSURE MAINTENANCE DEVICE
- 17 AIR COMPRESSOR (120 VOLT) - SUFFICIENT TO PROVIDE SYSTEM CHARGE WITHIN 30 MINUTES
- 18 CONDENSATE DRAIN
- 19 LOW AIR ALARM SWITCH (WIRED TO FIRE PANEL BY E.C.)
- 20 PIPE SUPPORT TEE

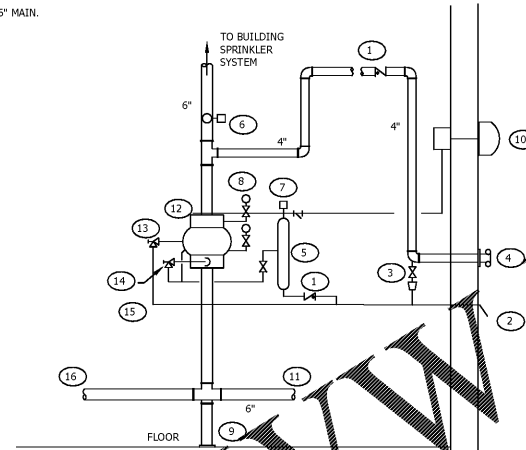


THIS RISER DIAGRAM IS FOR GENERAL INFORMATION ONLY. THE INSTALLATION OF THE SPRINKLER SYSTEM SHALL BE IN COMPLIANCE WITH NFPA 13.

**DRY SPRINKLER RISER DIAGRAM**  
NO SCALE

**RISER DIAGRAM NOTES**

- 1 CHECK VALVE
- 2 2" DRAIN PIPED 6" ABOVE FINISHED GRADE
- 3 BALL DRIP
- 4 CHROME FIRE DEPARTMENT CONNECTION WITH "AUTO SPRINKLER" LETTERING POTTER-ROEMER 5751 OR 5753. COORDINATE HOSE THREAD AND STYLE WITH LOCAL FIRE DEPARTMENT. MOUNT AT A MINIMUM 24" AFG.
- 5 VIKING RETARDING CHAMBER B-3
- 6 FLOW SWITCH, WIRED BY EC.
- 7 PRESSURE SWITCH MODEL A-1
- 8 WATER GAUGE
- 9 PIPE SUPPORT TEE
- 10 VIKING WATER MOTOR ALARM F-1 WITH POTTER ROEMER SIGN 6340, "WHEN BELL RINGS CALL FIRE DEPARTMENT"
- 11 6" MAIN.
- 12 6" VIKING ALARM CHECK VALVE
- 13 2" MAIN DRAIN VALVE
- 14 ALARM TEST VALVE
- 15 2" MAIN DRAIN
- 16 6" PIPE TO DRY RISER



THIS RISER DIAGRAM IS FOR GENERAL INFORMATION ONLY. THE INSTALLATION OF THE SPRINKLER SYSTEM SHALL BE IN COMPLIANCE WITH NFPA 13/13R.

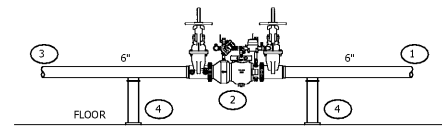
**WET SPRINKLER RISER DIAGRAM**  
NO SCALE

**SPRINKLER GENERAL NOTES:**

1. PROVIDE A WET PIPE SYSTEM IN ACCORDANCE WITH NFPA 13 TO SERVE ALL HEATED AREAS OF THE BUILDING. THE WET SPRINKLER SYSTEM SHALL BE HYDRAULICALLY CALCULATED TO PROVIDE THE PRESCRIBED DENSITY UNIFORMLY OVER THE MOST REMOTE AREA. COPIES OF THE CALCULATIONS SHALL BE SUBMITTED WITH THE SHOP DRAWINGS. THE BUILDING IS MIXED CLASSIFICATION.
2. PROVIDE A DRY PIPE SYSTEM IN ACCORDANCE WITH NFPA 13 TO SERVE ENTIRE ATTIC AREA AND ANY AREAS SUBJECT TO FREEZING. THE DRY SPRINKLER SYSTEM SHALL BE HYDRAULICALLY CALCULATED TO PROVIDE THE PRESCRIBED DENSITY UNIFORMLY OVER THE MOST REMOTE AREA. COPIES OF THE CALCULATIONS SHALL BE SUBMITTED WITH THE SHOP DRAWINGS.
3. SPRINKLERS SHALL BE CENTERED IN SPACES AND LOCATED SYMMETRICALLY WITH LIGHTING FIXTURES AND DOWNERS AS SHOWN.
4. THE SPRINKLER SPACING AND LOCATIONS IN THE ENTIRE SPRINKLER SYSTEM SHALL BE INSTALLED IN ACCORDANCE WITH NFPA-13.
5. THE SPRINKLER CONTRACTOR SHALL BE RESPONSIBLE FOR SUBMITTING THE SYSTEM DESIGN, SHOP DRAWINGS, AND HYDRAULIC CALCULATIONS TO ALL AGENCIES HAVING JURISDICTION FOR REVIEW AND APPROVAL INCLUDING THE LOCAL BUILDING INSPECTOR AND FIRE MARSHALL. DRAWINGS AND CALCULATIONS SHALL BE REVIEWED BY A PA LICENSED PROFESSIONAL ENGINEER.
6. THE ENTIRE BUILDING SHALL BE SPRINKLERED. THIS SHALL INCLUDE THE UNHEATED COMBUSTIBLE SPACES. AREAS SUBJECT TO FREEZING SHALL BE SERVED BY A DRY PIPE SPRINKLER SYSTEM. CONCEALED COMBUSTIBLE SPACES WILL INCLUDE BUT NOT LIMITED TO: ATTIC SPACE, AND OVERHANGING ROOF SPACES.
7. PROVIDE A WET PIPE AND PIPE SYSTEM IN ACCORDANCE WITH NFPA. THE STAND PIPE SYSTEM SHALL BE HYDRAULICALLY CALCULATED IN ACCORDANCE WITH NFPA.
8. THE SPRINKLER DISTRIBUTION SYSTEM SHALL BE SCHEDULE 10 PIPE WITH ROLL GROOVED FITTINGS FOR 2 1/2" AND UP, AND SCHEDULE 40 THREADED PIPE FOR 2" AND BELOW. PIPING SHALL BE GALVANIZED FOR DRY SYSTEMS AND AREAS SUBJECT TO MOISTURE. PIPING SHALL BE GALVANIZED FOR DRY SYSTEMS AND AREAS SUBJECT TO MOISTURE.
9. PROVIDE INSPECTOR TEST LOCATIONS AT THE MOST REMOTE POINT OF THE SPRINKLER SYSTEM.
11. THE WATER SOURCE FOR THE SPRINKLER SYSTEM IS CITY WATER. CONTRACTOR IS RESPONSIBLE TO COORDINATE A FLOW TEST WITH WATER COMPANY, RESULTS SHALL BE USED FOR ENTIRE SYSTEM DESIGN.
12. THE SPRINKLER CONTRACTOR SHALL REVIEW ALL PROJECT DRAWINGS AND COORDINATE THE INSTALLATION OF THE PIPING WITH ALL OTHER TRADES FOR THE PROJECT.
13. ALL OS&Y VALVES TO HAVE TAMPER SWITCHES.
14. THE DRY PIPE RISER SHALL BE COMPLETE WITH ALL ACCESSORIES AS REQUIRED BY NFPA 13 INCLUDING THE FOLLOWING: DRY PIPE ALARM VALVE, 2" MAIN DRAIN, WATER MOTOR GONG, (2) GAGES, AIR PRESSURE MAINTENANCE DEVICE ACCELERATOR, ALARM LINE STRAINER, PRESSURE SWITCH, WATER FLOW SWITCH, ALARM TEST VALVE, AND AIR COMPRESSOR CAPABLE OF RESTORING PRESSURE WITHIN 30 MINUTES.
15. THE WET PIPE RISER SHALL BE COMPLETE WITH ALL ACCESSORIES AS REQUIRED BY NFPA 13 INCLUDING THE FOLLOWING: WET PIPE ALARM VALVE, 2" MAIN DRAIN, WATER MOTOR GONG, (2) GAGES, RETARDING CHAMBER, PRESSURE SWITCH, WATER FLOW SWITCH, ALARM TEST VALVE.
16. DO NOT INSTALL SPRINKLER PIPING OR ANY OTHER EQUIPMENT OVER ELECTRICAL PANELS AND EQUIPMENT. MAINTAIN A MINIMUM OF 36" CLEAR IN FRONT OF ELECTRICAL PANELS AND EQUIPMENT.
17. PROVIDE A FIRE DEPARTMENT CONNECTIONS AS SHOWN ON THE RISER DIAGRAM AND PLAN. COORDINATE TYPE, SIZE, AND LOCATION WITH FIRE MARSHAL.
18. PROVIDE AN WILKINS MODEL 350ADA-6" DOUBLE CHECK DETECTOR ASSEMBLY. PROVIDE TAMPER SWITCHES ON EACH VALVE, COORDINATE WIRING WITH EC.
19. PROVIDE ALL EQUIPMENT AND MATERIALS IN STRICT ACCORDANCE WITH CURRENT ADOPTED IBC, CURRENT NFPA 13, 14, AND 24. ALL PERTINENT CODES, LAWS, ORDINANCES, REGULATIONS, AND RESPECTIVE MANUFACTURER'S WRITTEN INSTRUCTIONS.
20. LABEL ALL SPRINKLER PIPING WITH COLORED, WATERPROOF, ALL TEMPERATURE, SELF-ADHERING LABELS AND DIRECTIONAL ARROWS AS MANUFACTURED BY SETON.
21. THE SPRINKLER CONTRACTOR SHALL PROVIDE INSTRUCTIONS TO THE OWNER FOR EACH SYSTEM INSTALLED AND THE OPERATION OF ALL EQUIPMENT IN HIS CONTRACT.
22. SPRINKLER CONTRACTOR SHALL UNCONDITIONALLY GUARANTEE IN WRITING ALL MATERIALS, EQUIPMENT, AND WORKMANSHIP FOR A PERIOD OF ONE YEAR FROM DATE OF ACCEPTANCE BY OWNER.
23. THE SPRINKLER CONTRACTOR SHALL SUBMIT TO THE ARCHITECT/OWNER AS-BUILT DRAWINGS AND OPERATION AND MAINTENANCE MANUALS INCLUDING ALL NAME PLATE DATA, WIRING DIAGRAMS, MAINTENANCE INSTRUCTIONS, AND PARTS LIST UPON PROJECT COMPLETION.
21. SPRINKLER HEADS SHALL BE AS FOLLOWS:
  - A. HEADS IN CEILINGS IN PUBLIC AREAS: CONCEALED, WHITE COVER PLATE.
  - B. HEADS IN CEILINGS IN OFFICES/MEETING: CONCEALED, WHITE COVER PLATE.
  - C. SIDEWALL HEADS IN PUBLIC AREAS: WHITE SEMI-RECESSED
  - D. SIDEWALL DRY HEADS SERVING EXTERIOR: CHROME SEMI-RECESSED
  - E. HEADS IN CEILINGS OF STAIRS/STORAGE ROOMS/STORAGE: CHROME SEMI-RECESSED
  - F. HEADS IN MECHANICAL ROOMS/UTILITY ROOMS: CHROME

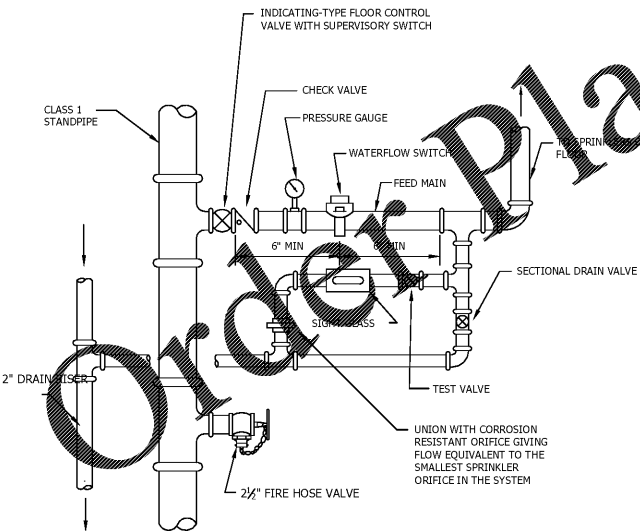
**RISER DIAGRAM NOTES**

- 1 6" MAIN FROM 8" COMBINED WATER SERVICE
- 2 DOUBLE CHECK DETECTOR ASSEMBLY, WILKINS MODEL 350ADA, 6" PIPE SIZE. PROVIDE TAMPER SWITCHES ON OS&Y VALVES. WIRED BY EC.
- 3 6" MAIN TO WET PIPE AND DRY PIPE RISERS.
- 4 PIPE SUPPORT TEE



THIS RISER DIAGRAM IS FOR GENERAL INFORMATION ONLY. THE INSTALLATION OF THE SPRINKLER SYSTEM SHALL BE IN COMPLIANCE WITH NFPA 13.

**FIRE PROTECTION SERVICE RISER**  
NO SCALE



**COMBINED STANDPIPE/SPRINKLER SYSTEM**  
NO SCALE

No.	Description	Date

**DISCLAIMER:** entegra™ is providing this information only. entegra™ does not warrant, represent, or guarantee the accuracy or completeness of the information. entegra™ is not responsible for any errors or omissions in this document. entegra™ is not responsible for any damages, including consequential, special, or punitive damages, arising from the use of this information. entegra™ is not responsible for any damages, including consequential, special, or punitive damages, arising from the use of this information. entegra™ is not responsible for any damages, including consequential, special, or punitive damages, arising from the use of this information.

**MEISTER-COX ARCHITECTS**  
 INFO@MEISTER-COX.COM  
 PHONE: 610-375-1331 FAX: 610-375-4555  
 1522 PENN AVENUE WYOMISSING, PA 19610  
 WWW.MEISTER-COX.COM

**SEAL:**

**FIRE PROTECTION INFORMATION SHEET**  
 HOLIDAY INN EXPRESS & SUITES  
 INTERSECTION OF HAYNES PLACE & LAMMI RD.  
 WILSON, NC 27883

**STATUS:** FOR BID  
**PROJ. DATE:** 06/06/2019  
**PROJ. NO:** 19-116  
**PRINTED:** 06/06/2019  
**DRAWN BY:** jlm/brm/jpk  
**CHECKED BY:** brm  
**SHEET NO:** FP0.1  
**SCALE:** AS NOTED