

No.	Description	Date

DISCLAIMER: This drawing is provided by agreement with the client. It is the responsibility of the client to verify the accuracy of the data, plans, specifications, reports, and other documents used in the preparation of this drawing. The engineer assumes no responsibility for any errors or omissions in this drawing. The engineer's liability is limited to the design of the mechanical system shown on this drawing. The engineer does not warrant the accuracy or completeness of the information provided in this drawing. The engineer's liability is limited to the design of the mechanical system shown on this drawing. The engineer does not warrant the accuracy or completeness of the information provided in this drawing.

MEISTER COX ARCHITECTS
 INFO@MEISTER-COX.COM
 PHONE: 610-375-1331 FAX: 610-375-4555
 1522 PENN AVENUE WYOMISSING, PA 19610
 WWW.MEISTER-COX.COM

SEAL:

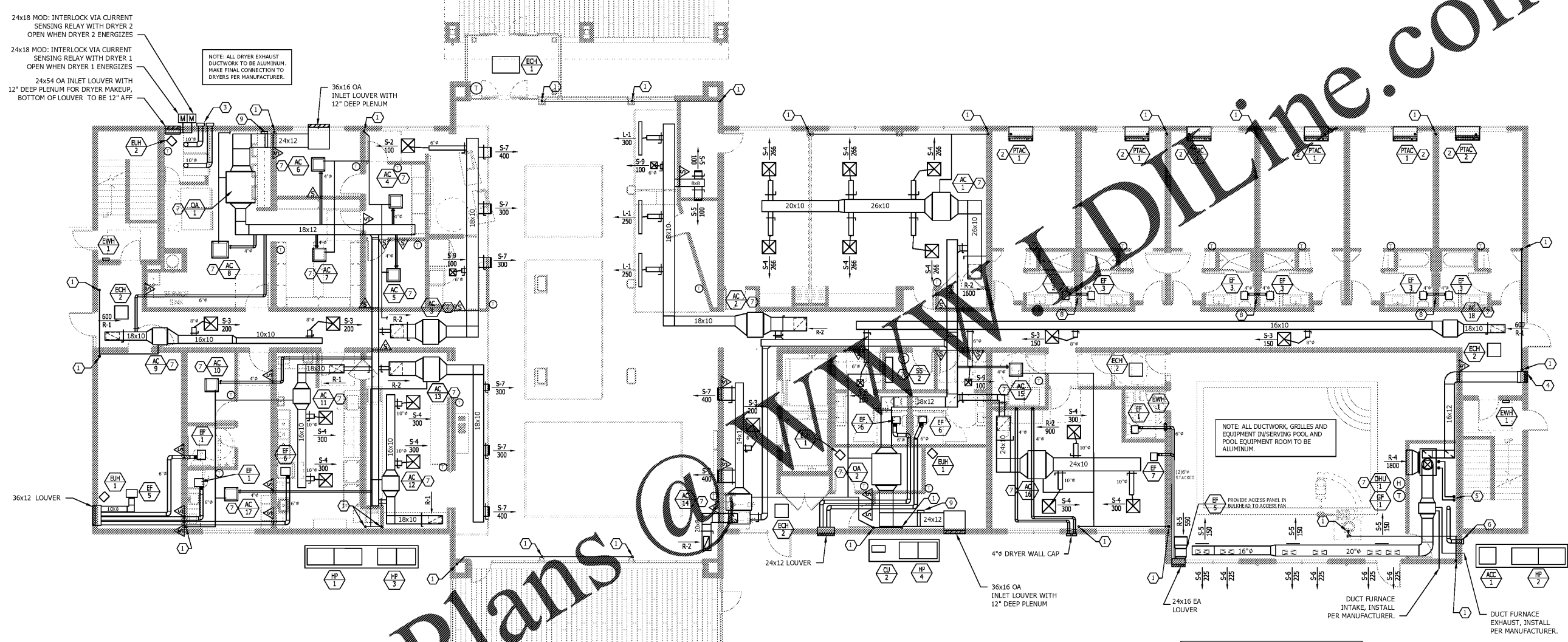
MECHANICAL FIRST FLOOR PLAN
 HOLIDAY INN EXPRESS & SUITES
 INTERSECTION OF HAYNES PLACE & LAMMI RD.
 WILSON, NC 27883

STATUS:	FOR BID
PROJ. DATE:	06/06/2019
PROJ. NO.:	19-116
PRINTED:	06/06/2019
DRAWN BY:	jlm/brm/jpk
CHECKED BY:	brm
SHEET NO.:	M2.1
SCALE:	AS NOTED

24x18 MOD: INTERLOCK VIA CURRENT SENSING RELAY WITH DRYER 2 OPEN WHEN DRYER 2 ENERGIZES
 24x18 MOD: INTERLOCK VIA CURRENT SENSING RELAY WITH DRYER 1 OPEN WHEN DRYER 1 ENERGIZES
 24x54 OA INLET LOUVER WITH 12" DEEP PLENUM FOR DRYER MAKEUP, BOTTOM OF LOUVER TO BE 12" AFF

NOTE: ALL DRYER EXHAUST DUCTWORK TO BE ALUMINUM. MAKE FINAL CONNECTION TO DRYERS PER MANUFACTURER.

NOTE: ALL DUCTWORK, GRILLES AND EQUIPMENT INSERVING POOL AND POOL EQUIPMENT ROOM TO BE ALUMINUM.



A MECHANICAL FIRST FLOOR PLAN
 M2.1 SCALE: 1/8" = 1'-0"

Order Plans

NEW WORK KEYED NOTES:

- 1 1/4" CONDENSATE RISER, TERMINATE 12" ABOVE FINISHED GRADE WITH TURN DOWN ELBOW AND SCREEN.
- FIRST FLOOR PTAC CONDENSATE TO BE PIPED THROUGH WALL AND TERMINATE 12" ABOVE FINISHED GRADE WITH TURN DOWN ELBOW AND SCREEN.
- 10" DRYER WALL CAP (TYPICAL OF 2), PAINT TO MATCH BUILDING SIDING. PROVIDE BACKDRAFT DAMPER IN WALL CAP. ALL DRYER DUCTWORK TO BE WRAPPED WITH 3/4" FIRE WRAP TO PROVIDE ZERO CLEARANCE TO COMBUSTIBLE. COORDINATE WALL PENETRATION WITH GC TO MAINTAIN CLEARANCE TO COMBUSTIBLES.
- 18x16 OA LOUVER, COLOR TO BE SELECTED BY ARCHITECT.
- 1 1/2" SCHEDULE 80 PVC PIPING FROM DHU-1 TO POOL PIPING, COORDINATE FINAL CONNECTION WITH POOL SUPPLIER, REFER TO EQP1 SCHEDULE.
- 6" VENT FROM POOL HEATER, COORDINATE WITH POOL SUPPLIER, INSTALL PER MANUFACTURER.
- PROVIDE CONDENSATE FROM PUMP TO CONDENSATE RISERS SERVING PTAC UNITS OR FLOOR DRAIN/SINK.
- 4" EXHAUST RISERS IN WALL CAVITY UP THROUGH ROOF. FIRE CAULK BOTH SIDES OF ALL PENETRATIONS IN WALL CAVITY.
- ELECTRIC COIL IN OUTSIDE AIR DUCTWORK FOR PRE-HEAT. BERKO SLIPIN ELECTRIC COIL WITH CONTROL PANEL WITH AIRFLOW SWITCH AND DISCONNECT, 15 KW, 208V, 3 PHASE.

NOTE: ALL 4" EXHAUST DUCTWORK TO BE MINIMUM 26 GAUGE GALVANIZED STEEL (MINIMUM WALL THICKNESS 0.187 INCHES).

NOTE: FIRE CAULK ALL EXHAUST DUCT PENETRATIONS WITHIN FIRE RATED ASSEMBLIES AT BOTH SIDES OF ALL PENETRATIONS.

NOTE: COORDINATE ALL DUCTWORK WITH RECESSED LIGHTING AND PLUMBING PIPING.

NOTE: PROVIDE CABLE OPERATED DAMPERS AS MANUFACTURED BY DURO DYNE FOR ALL VOLUME DAMPERS LOCATED ABOVE DRYWALL CEILINGS, REFER TO ARCHITECTURAL REFLECTED CEILING PLAN FOR ALL LOCATIONS. DAMPERS TO HAVE CONCEALED CEILING BOX KITS WITH COVER PAINTED TO MATCH CEILING.

NOTE: COORDINATE FINAL LOCATION OF ALL EXTERIOR CONDENSING UNITS/HEAT PUMPS WITH ARCHITECT.

NOTE: PROVIDE CEILING RADIATION DAMPER IN ALL GRILLES AND DIFFUSERS IN FIRE RATED CEILING. REFER TO ARCHITECTURAL PLANS FOR LOCATION OF ALL FIRE RATED CEILINGS.

NOTE: ALL LOUVERS TO BE GREENHECK MODEL ESD-403. ALL BRICK VENTS TO BE GREENHECK MODEL BVE168.

PROVIDE ALL LOUVERS AND BRICK VENTS WITH INSECT SCREEN. ALL COLORS TO BE SELECTED BY ARCHITECT.