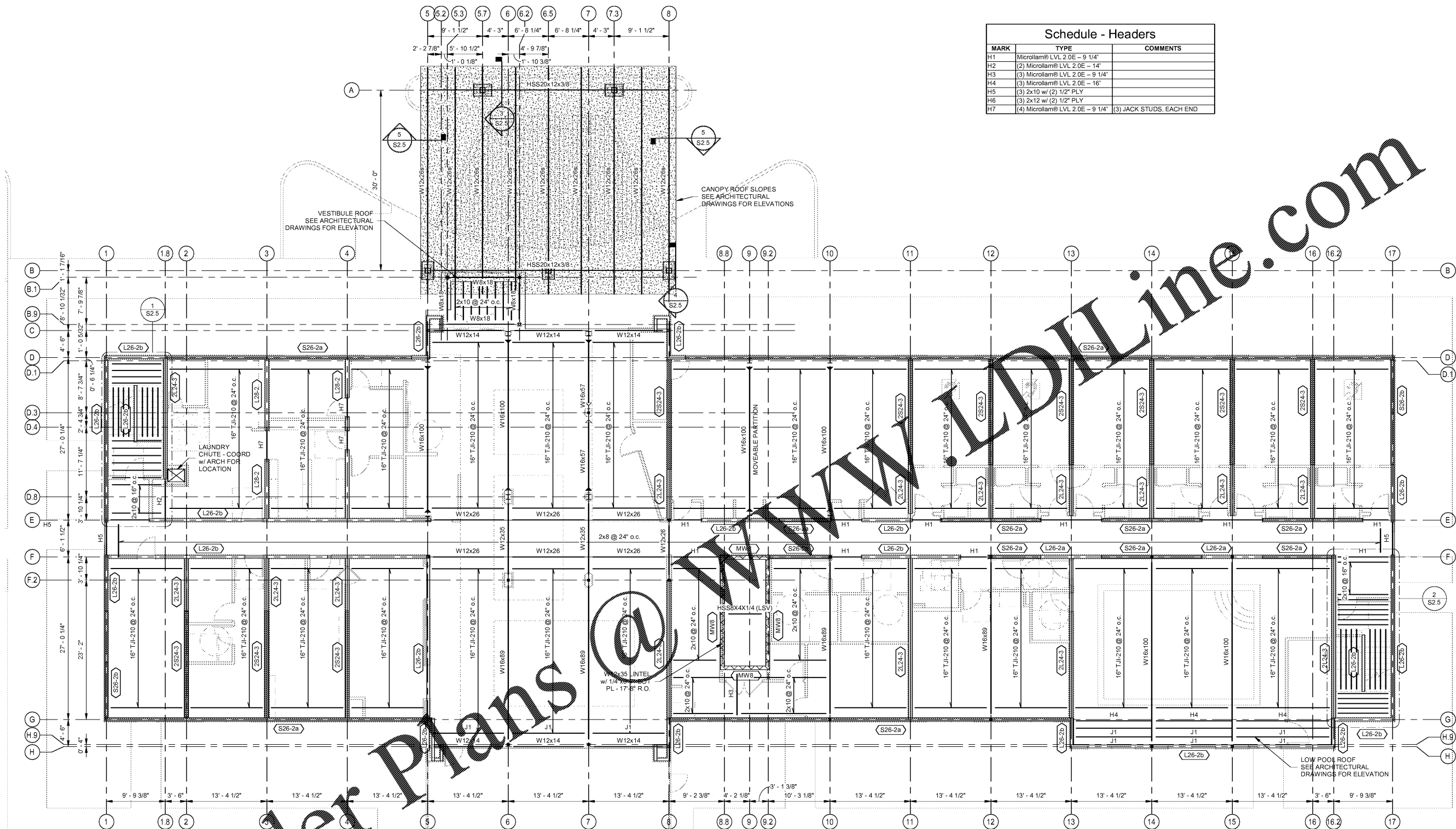


BIM 360/1083218.000_HIEK-Wilson_NC_R19/Struct_1083218000_HIEK_Wilson_NC_R19.rvt



Schedule - Headers		
MARK	TYPE	COMMENTS
H1	Microlam® LVL 2.0E - 9 1/4"	
H2	(2) Microlam® LVL 2.0E - 14"	
H3	(3) Microlam® LVL 2.0E - 9 1/4"	
H4	(3) Microlam® LVL 2.0E - 16"	
H5	(3) 2x10 w/ (2) 1/2" PLY	
H6	(3) 2x12 w/ (2) 1/2" PLY	
H7	(4) Microlam® LVL 2.0E - 9 1/4"	(3) JACK STUDS, EACH END

Order Plans @ WWW.ALDOnline.com

Level 2 Framing Plan
SCALE: 1/8" = 1'-0"

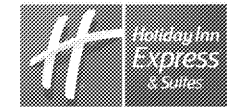
- NOTES:
1. FINISH FLOOR ELEVATION (U.N.O.): 182' - 1"
 2. TOP OF STEEL ELEVATION (U.N.O.): 181' - 8 1/4"
 3. FLOOR JOIST BEARING ELEVATION (U.N.O.): 180' - 7 1/4"
 4. MAXIMUM FLOOR JOIST SPACING 2'-0" U.N.O.
 5. ALL WOOD-TO-WOOD CONNECTIONS TO BE MADE WITH APPLICABLE SIMPSON PRODUCT OR EQUAL.
 6. SEE CHART BELOW FOR FLOOR SLAB AND/OR ROOF DECK TYPES
 7. VARIATIONS IS TOP OF STEEL ELEVATION (T.O.S.) SHALL BE NOTES AS (+/- 0'-0")
 8. JOIST TOP CHORD EXTENSIONS SHALL BE TYPE R WITH SAME CAPACITY AS BAR JOIST
 9. FOR WOOD DETAILS, STEEL DETAILS AND SCHEDULES SEE: S2.4

TYPE	DECK TYPE/GA/FINISH	MAX. BEAM SPACING	DECK FASTENING
1 1/2" Metal Roof Deck	TYPE B - 22 GA - GALVANIZED	5'-6"	
3/4" Sheathing w/ 1" Gypcrete	APA Rated Sheathing - Exp 1 - Sturd-I-Floor	24" o.c.	Nailed W/ 10d @ 6" o.c.

Steel Symbol Legend

- ◀ Denotes Beam to Column Moment Connection to be Designed by Fabricator for Forces Indicated
- ◀▶ Denotes Beam to Beam Moment Connection to be Designed by Fabricator for Forces Indicated
- ◁ Denotes Beam to Column Cantilever Moment Connection to be Designed by Fabricator for Forces Indicated
- ◁◁ Denotes Beam Cantilever - Beam to Extend over top of Column
- ◁◁ Denotes Continuous Beam
- ◆ Denotes Beam to Column/Beam Slip Connection - Ref. Typical Details
- ⊥ Denotes Bent Beam - Cut, Miter and Full Penetration Weld Beam to Create Change in Elevation

CONTRACTOR SHALL VERIFY ALL CONDITIONS AND DIMENSIONS FOR THE ENTIRE PROJECT BEFORE PROCEEDING WITH THE WORK.



MEISTER COX ARCHITECTS
 INFO@MEISTER-COX.COM
 PHONE: 610-375-1331 FAX: 610-375-4555
 1522 PENN AVENUE WYOMISSING, PA 19380
 WWW.MEISTER-COX.COM

SEAL:

SECOND FLOOR FRAMING PLAN
 HOLIDAY INN EXPRESS & SUITES
 INTERSECTION OF HAYNES PLACE & LAMM RD.
 WILSON, NC 27783

STATUS: PERMIT
 PROJ. DATE: 06-05-19
 PROJ. NO. 1083218.000
 PRINTED: 6/5/2019 4:24:16 PM
 DRAWN BY: RPK
 CHECKED BY: RMA
 SHEET NO. **S2.0**
 SCALE: As indicated